



## OXLEY (A)

### Planning Drawings

GF: 32.09 m2 ( 345.41 ft2 )  
FF: 32.09 m2 ( 345.41 ft2 )  
TOTAL: 64.18 m2 ( 690.83 ft2 )

© **Story Homes.**

Story House, Lords Way, Kingmoor Business Park,  
Carlisle, Cumbria. CA6 4SL.

**Tel 01228 404550**  
**Fax 01228 404551**

## Planning Layouts & Elevations

[illegible][illegible][illegible]

HOUSE TYPE

OXLEY (A)

OXLEY (A)

## DRAWING

# Contents: Planning

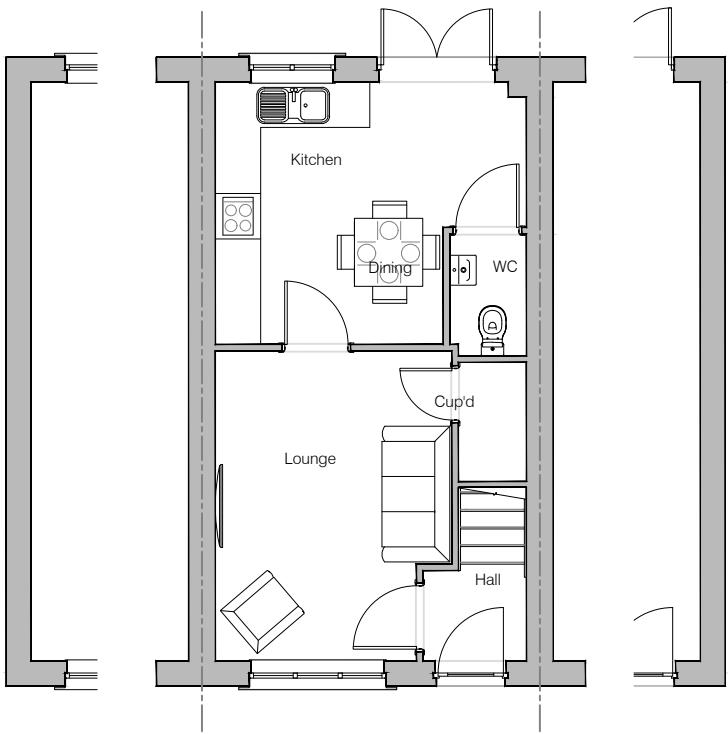
## Contents: Planning

DRAWN BY	JR	DATE	01/02/19
CHECKED BY	CTM, AH, AO	SCALE	NTS
DWG PACK	DRAWING NUMBER	REVISION	
A/02	OXY-P-CON	A	
Revisions	Notes	Date	
A	Updated to Pack A/02 issue. Drawings PLP1, PLE1/1 & PLE1/2 amended.	09/07/20	

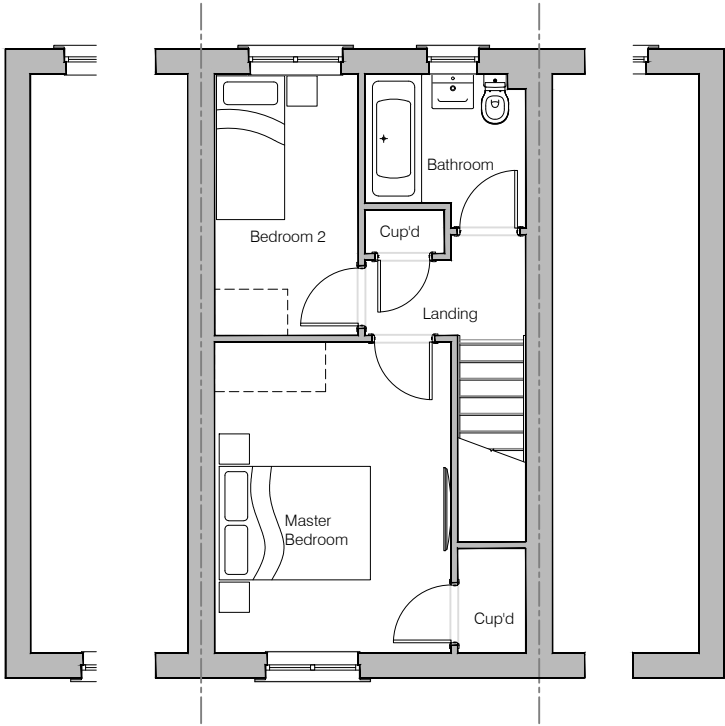
Revisions	Notes	Date
A	Updated to Pack A/02 issue. Drawings PLP1, PLE1/1 & PLE1/2 amended.	09/07/20

**© Story Homes.**  
Story House, Lords Way, Kingmoor Business Park,  
Carlisle, Cumbria. CA6 4SL  
**Tel 01228 404550 Fax 01228 404551**

NOTES



Ground Floor Layout



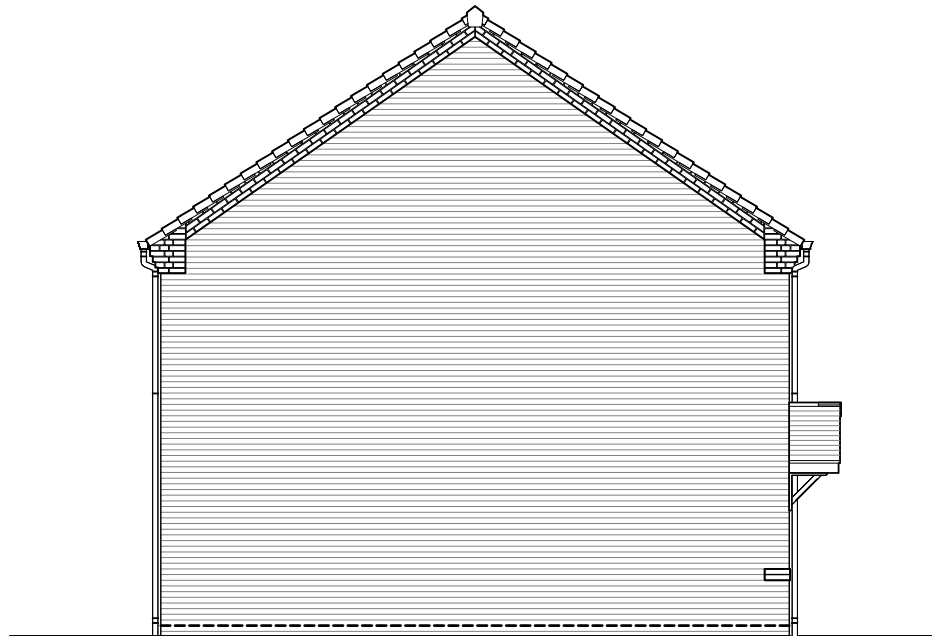
First Floor Layout



HOUSE TYPE			
OXLEY (A)			
DRAWING			
Planning Layout 1			
DRAWN BY	JR	DATE	01/02/19
CHECKED BY	CTM, AH, AO	SCALE	1:100@A3
DWG PACK	A/02	DRAWING NUMBER	OXY-PLP1
		REVISION	A
Revisions	Notes	Date	
A	Bathroom window repositioned.	09/07/20	



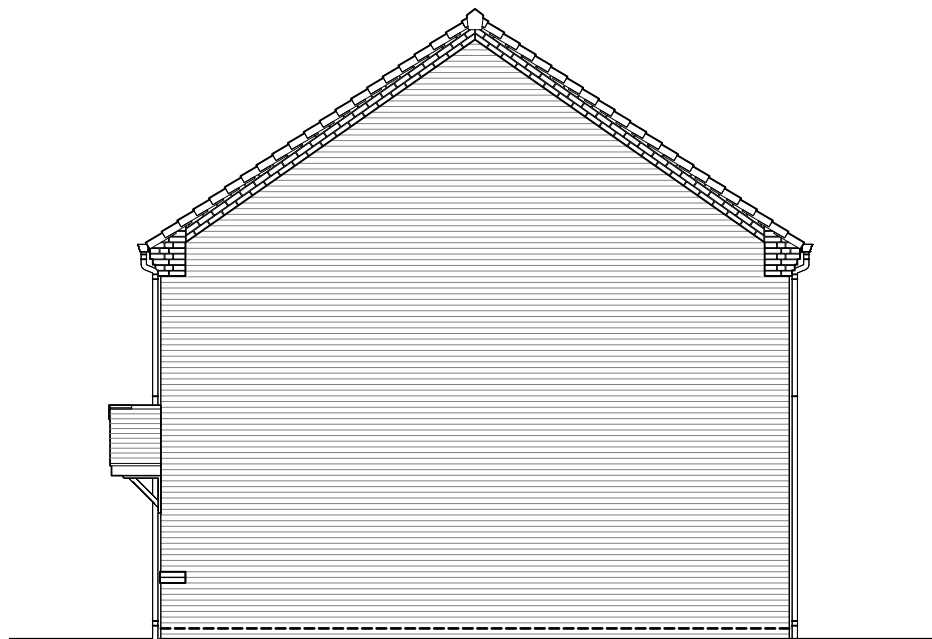
Front Elevation



Left Elevation



Rear Elevation



Right Elevation

NOTES



HOUSE TYPE

OXLEY (A)

DRAWING

Planning Elevation 1/1

DRAWN BY JR DATE 01/02/19

CHECKED BY CTM, AH, AO SCALE 1:100@A3

DWG PACK A/02 DRAWING NUMBER OXY-PLE1/1 REVISION A

Revisions Notes Date

A Rear 1st floor Bathroom window repositioned. Canopy updated. 09/07/20

© Story Homes.

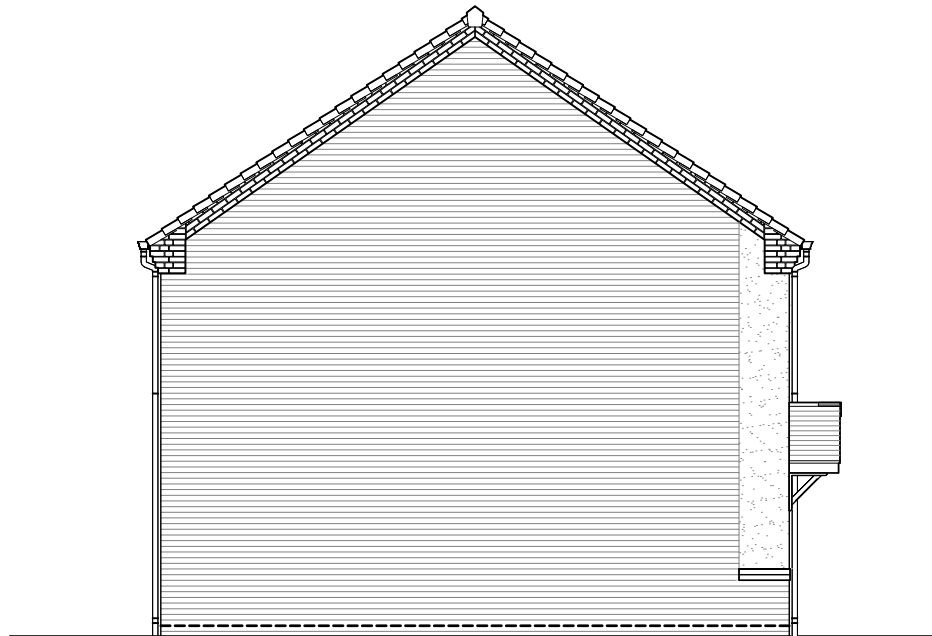
Story House, Lords Way, Kingmoor Business Park,  
Carlisle, Cumbria. CA6 4SL

Tel 01228 404550

Fax 01228 404551



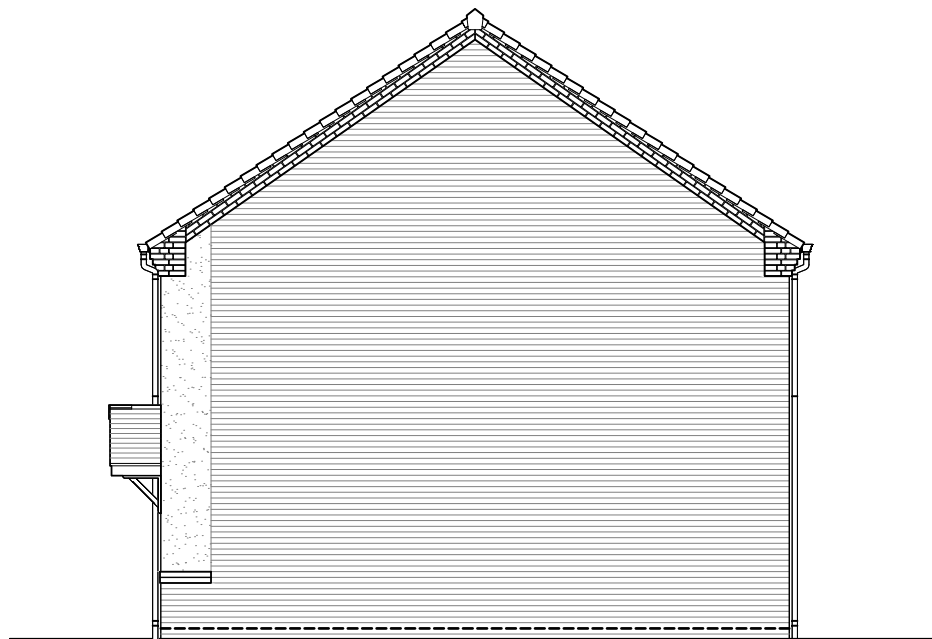
Front Elevation



Left Elevation



Rear Elevation



Right Elevation

NOTES



HOUSE TYPE

OXLEY (A)

DRAWING

Planning Elevation 1/2

DRAWN BY JR DATE 01/02/19

CHECKED BY CTM, AH, AO SCALE 1:100@A3

DWG PACK A/02 DRAWING NUMBER OXY-PLE1/2 REVISION A

Revisions Notes Date

A Rear 1st floor Bathroom window repositioned. Canopy updated. 09/07/20