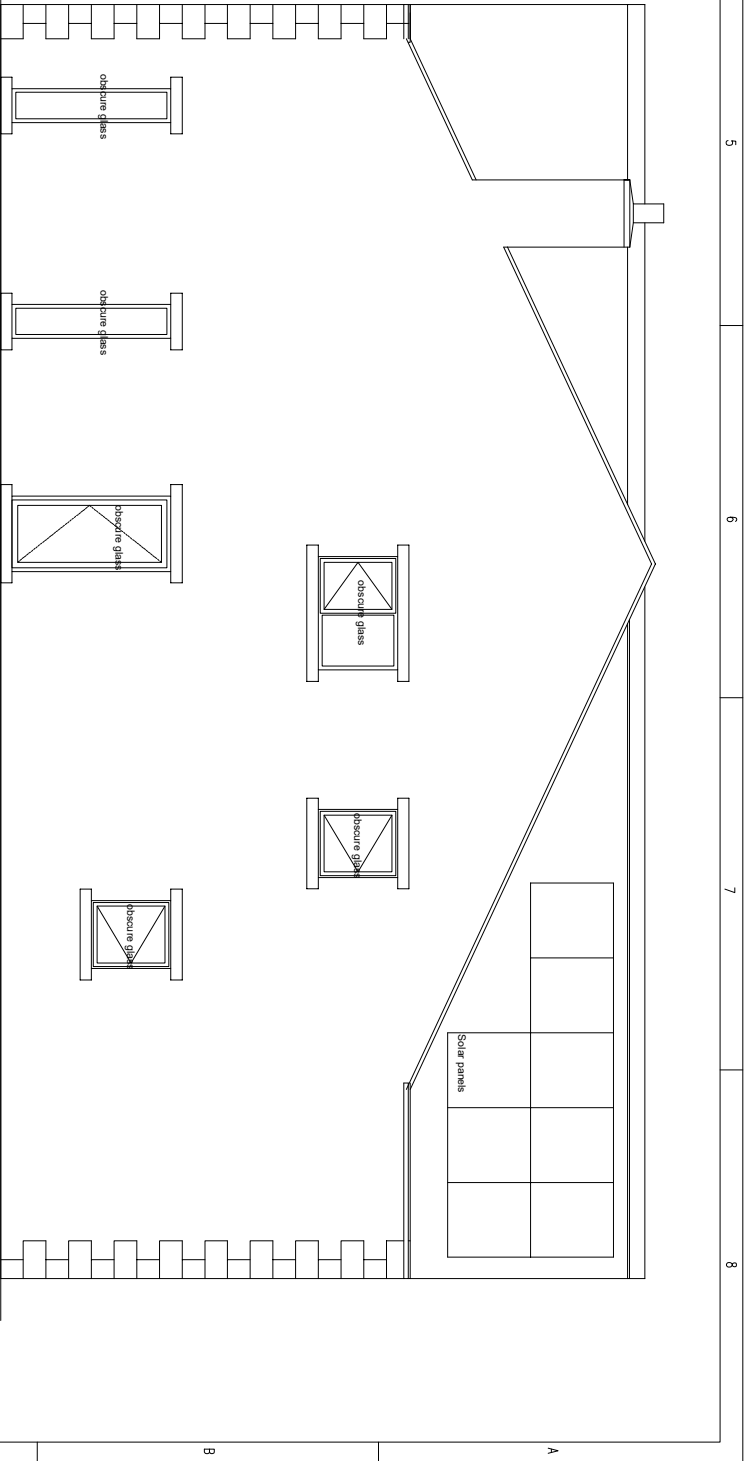
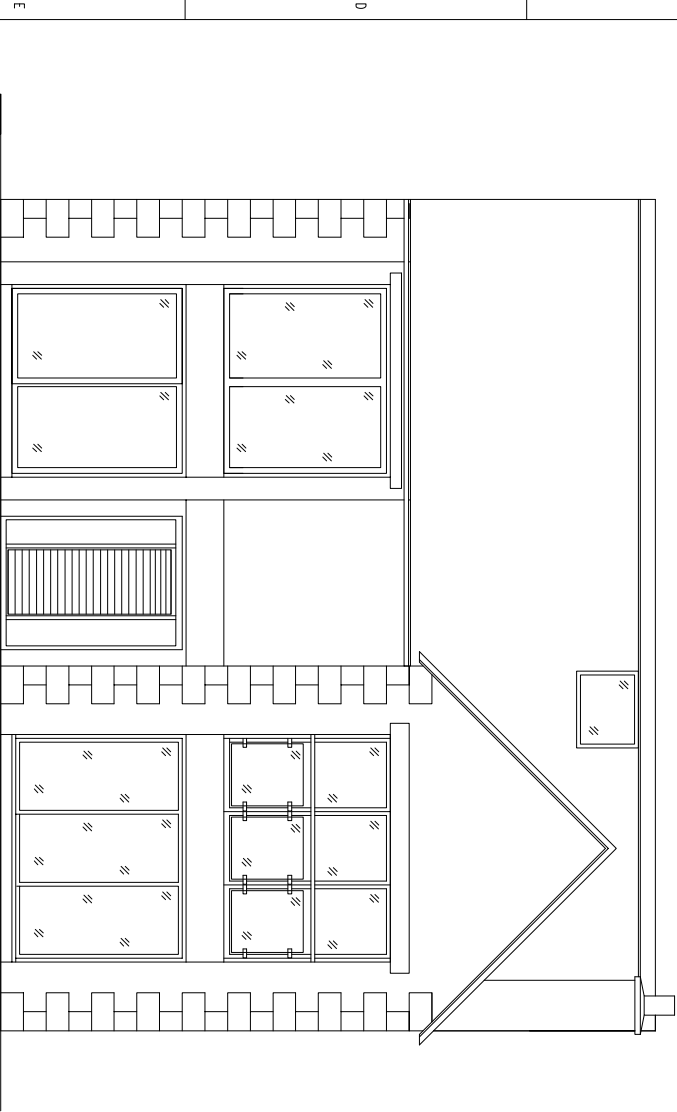


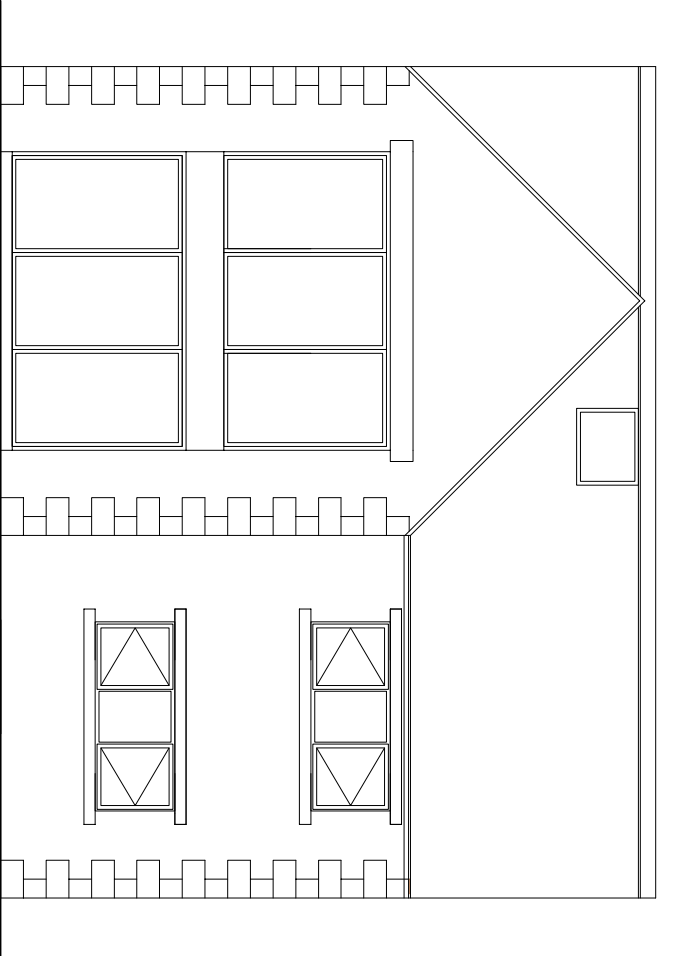
SIDE ELEVATION - NNW FACE



SIDE ELEVATION - SSE FACE



FRONT ELEVATION



REAR ELEVATION

Description of Revision:		H			
Amended from Revision G (Ashwood Design); number of windows reduced, type changes, minor relocations, and sizes amended. Number of Juliet balconies reduced to one. Solar panels added. Now single flue (one removed). Issued in support of Non-Material Amendment Ref. PP-14226478.					
<div><div><div>HRES</div><div>HUMAN RESOURCES & ENGINEERING SOLUTIONS Ltd.</div><div>17 Beck Rise, Beckermel, Cumbria CA21 2YN</div></div><div><div>PLANNING - NMA</div><div>Proposed Plot 1 - Elevations</div><div>Nethertown Road, St Bees</div></div></div>					
SCALE	SIZE	DRAWN BY	DATE	DRG. NO.:	REV.:
1:100	A3	S DUNN	05/08/2025	026	H