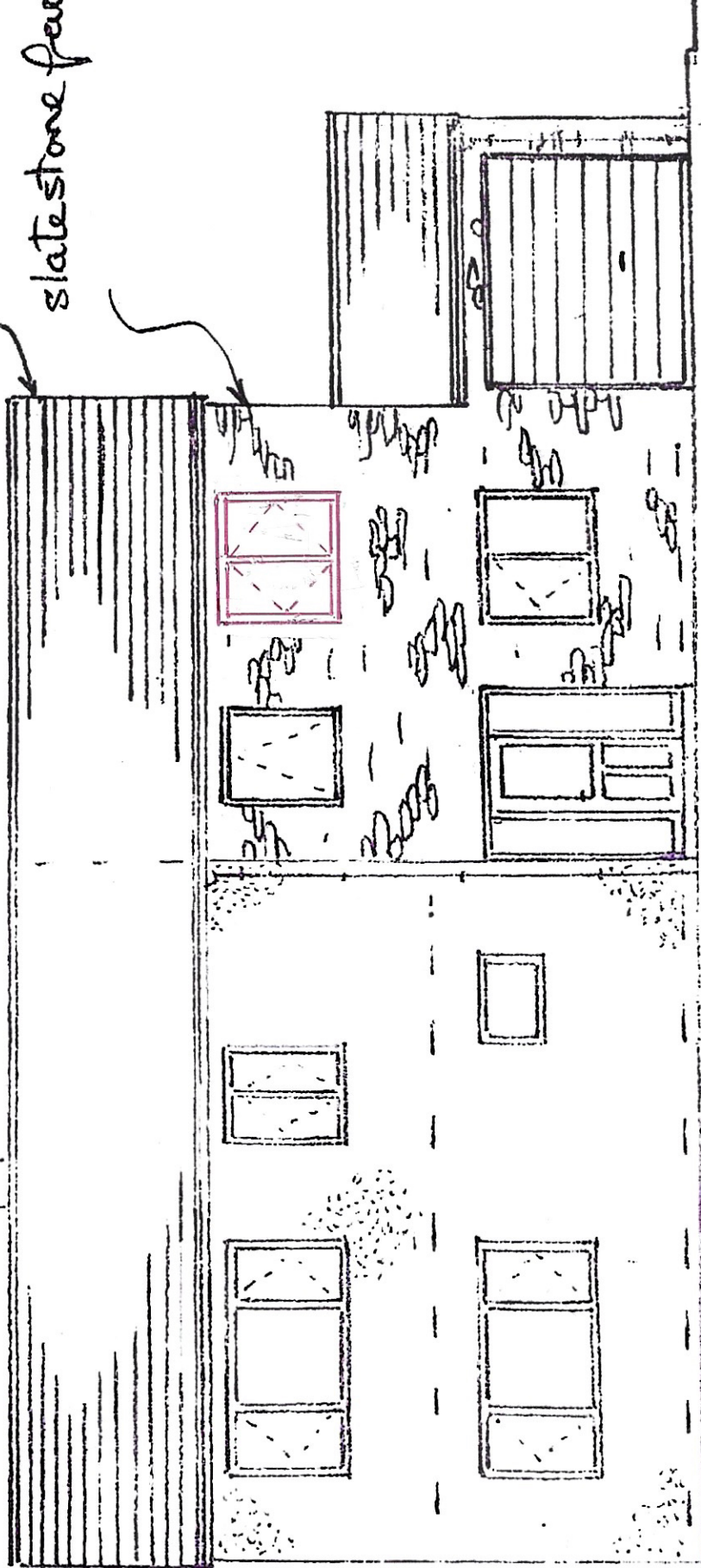


flat grey cement tiles
to match

slate stone facing



PROPOSED NORTH ELEVATION

1.4 x 1.2 (4'7" x 3'11") WINDOW

4.1 (13'7")

1.0 x 1.2 (3'3" x 3'11") WINDOW

200(8) SLATE STONE FACIA

4 LB LEAD FLASHING & DP TRAY TO CAVITY

550 (110)

4.57 (14'8")

325 x 78 (11'3" x 2'6") AT 400(10) CRS

BED 3

806

VELUX 250 (SUN TUBE OVER)

RL

806

3.45 (11'6")

4.3 (14')

BED 4

806

0.9 (3'0")

WC

BAT STRAP RESTRAINTS AT MAX 2-C (36") CRS

1.2 x 1.2 (5'11" x 3'11") WINDOW

WC

PROPOSED FIRST FLOOR

VELUX ROOF LIGHT 550 x 780 (1'10" x 2')

15 LITRE/SEC EXTN

