

West Cumberland Hospital

Materials Sample Board

20/05/22 Revision: P03




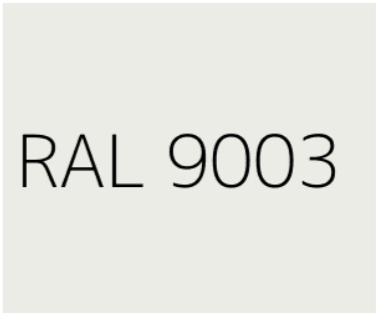


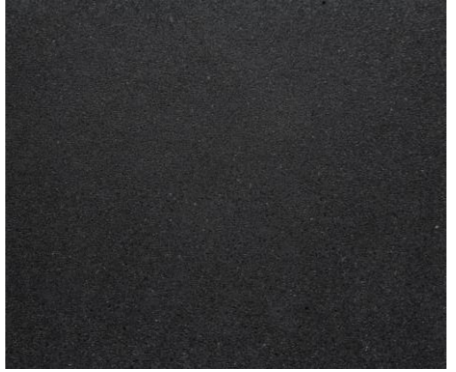


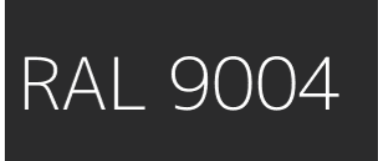

Document Control

Revision	Date	Description	Author
P01	12/04/22	Issued for Planning Conditions Discharge	EA
P02	16/05/22	Issued for discussion with NCIC Trust	EA
P03	20/05/22	Issued for NCIC Trust Approval and Conditions discharge Application	EA

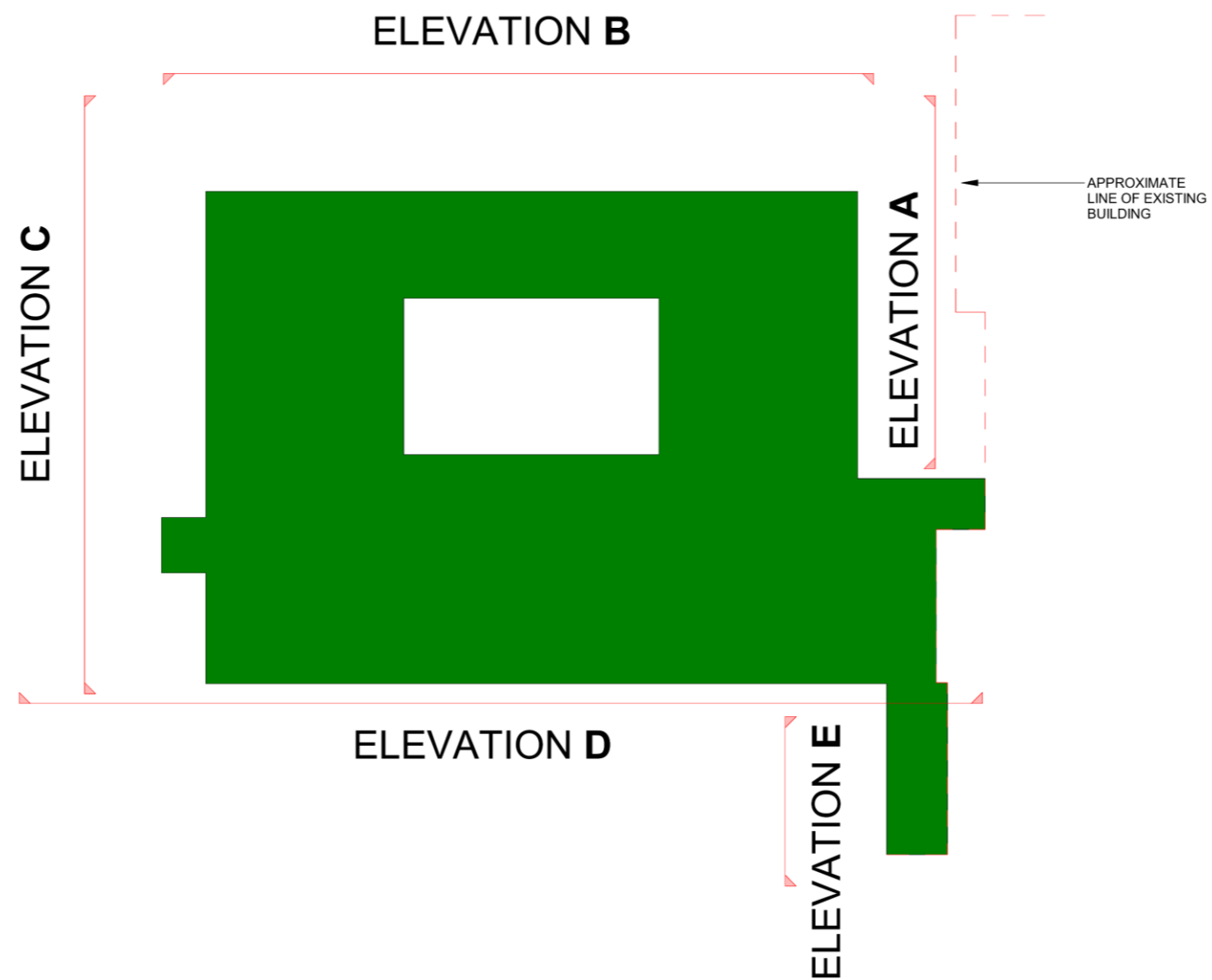


Introduction

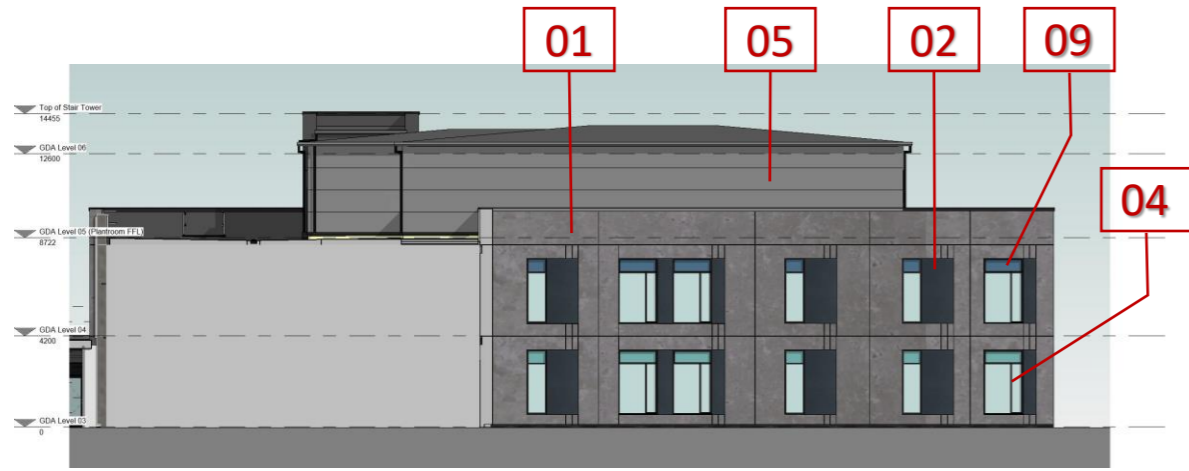
This report shows the samples and details of the materials to be used in the construction of the external surfaces of the West Cumberland Hospital Phase 2 construction.

<p>01. Concrete panel - Main Façade (FP McCann Ref: BYL 01) (RAL Match: RAL (Design) 060 60 05)</p> <p><i>Note: RAL matches are visual matches and are to be confirmed via pure paint samples.</i></p>		<p>05. Metal Cladding Panels (EUROCLAD) - RAL 9003 (Silver) (RAL to match Phase 1 plant room cladding)</p>	
<p>02. Recessed Concrete Panel (FP McCann Ref: BYL 03) (RAL Match: RAL 7010)</p> <p><i>Note: RAL matches are visual matches and are to be confirmed via pure paint samples.</i></p>		<p>06. Brick Cladding – Blockleys BLACK SMOOTH BRICKS by MBH</p> <p>Mortar: Coloured Mortars by Marshalls Ref: PM96</p>	
<p>03. Concrete panel - Staircore (FP McCann Ref: BYL 03) (RAL Match: RAL 7010)</p>		<p>07. Main Entrance Cladding – RAL 5023</p>	
<p>04. Aluminium Curtain Walling / Windows / External Door</p> <p>All Levels – Frames RAL 7021</p>		<p>08. Aluminium Louvre panel - RAL 9004</p>	
<p>09. Aluminium Window Spandrel Panels</p> <p>Level 03 Spandrel Panels - RAL 6027; Level 04 Spandrel Panels - RAL 5024 To match Phase 1</p>			

Elevation A, B, C, D & E

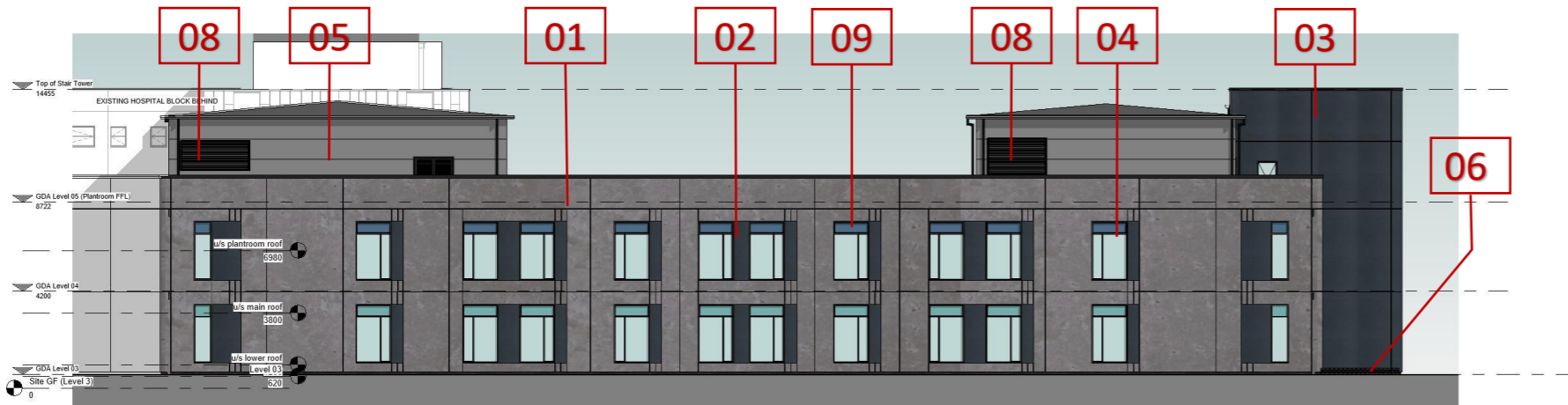


1.1 Elevations A, B, C, D & E



Elevation A

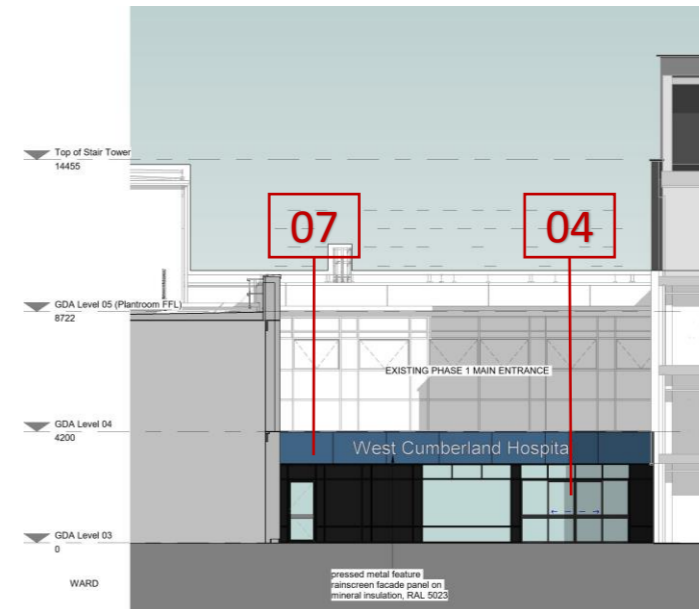
Elevation D



Concrete Panel Samples



Elevation B



Elevation C

Elevation E



Gilling Dod Architects
The Cruck Barn
Duxbury Park
Chorley
Lancashire
PR7 4AT

01257 260070

gillingdod.com