



KEY

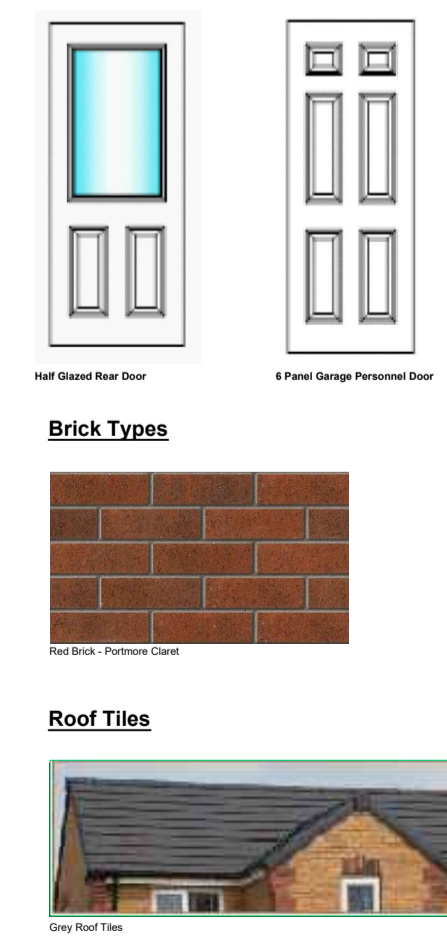
- Brick Facade
Red Brick - Portmore Claret
- U Urban '21 Elevations
- 1.8m High SW Boarded vertical screen fence comprising 100 x 19mm Boards with gaps. 3no. 75 x 38mm rails. 100 x 100mm posts at 1.8m centers.
- Screen Wall
- Acoustic 1.8m Fencing
- EV Charging points to working drawings

Drawing Notes

- Meter Box positions as per working drawings
- Air Source Heat Pumps as per working drawings (900mm Path required around ASHP for Servicing)
- EV Charging Point, as per working drawings, one per plot where most applicable. (Where garage or pole mounted chargers are required, location indicated via mustard coloured circle) ●

EV Cable Routes to Charging Mounts

(Please refer to SD361 EV Charging Points Details for information on cable depths and POC's)



Rev.	Preliminary Issue	15.02.24
	Comments	Date

gleeson

Gleeson Homes (Head Office)
Unit 5, Europa Court | Sheffield Business Park | Sheffield | South Yorkshire | S9 1XE
01142 612900
www.gleesonhomes.co.uk

Project: Ivy Mills
Cleator Moor

Title: Material Dispersion Plan

Scale: 1:500 @ A1	Date: 15.12.24	Drawn: HB	Checked:
Drawing No: 2089-MDP-01			Revision: -