



MASTERTON (A25)

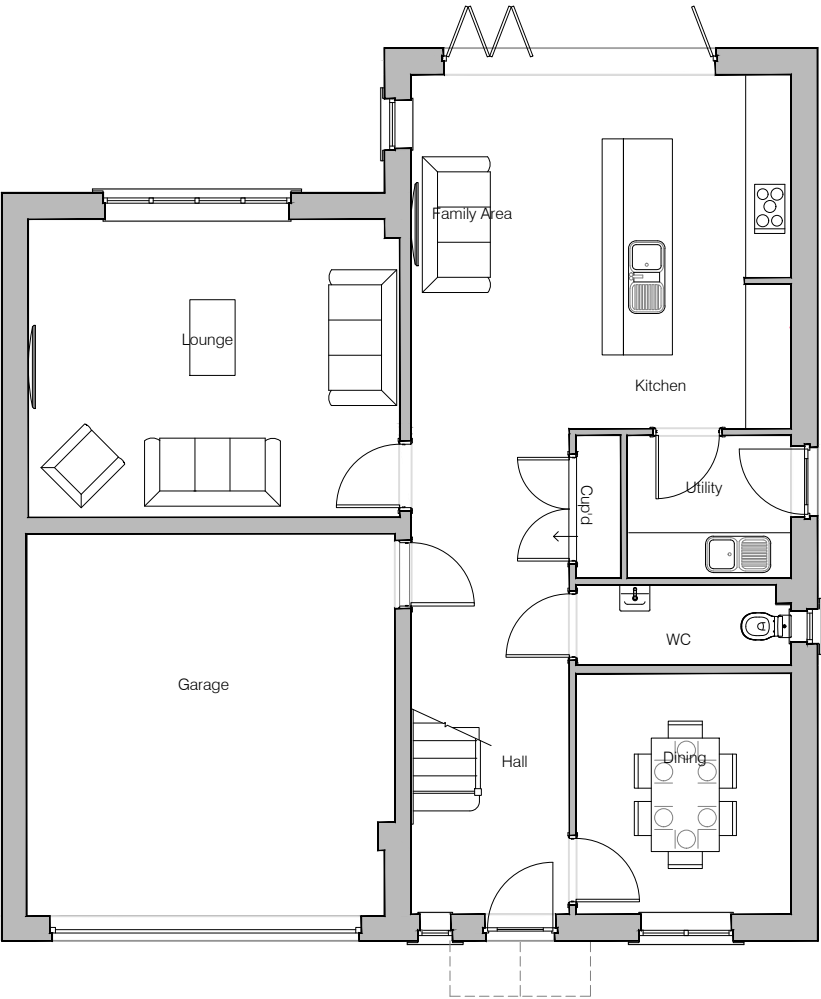
Planning Drawings

GF: 76.84 m2 (827.10 ft2)
FF: 89.14 m2 (959.49 ft2)
TOTAL: 166 m2 (1787 ft2)

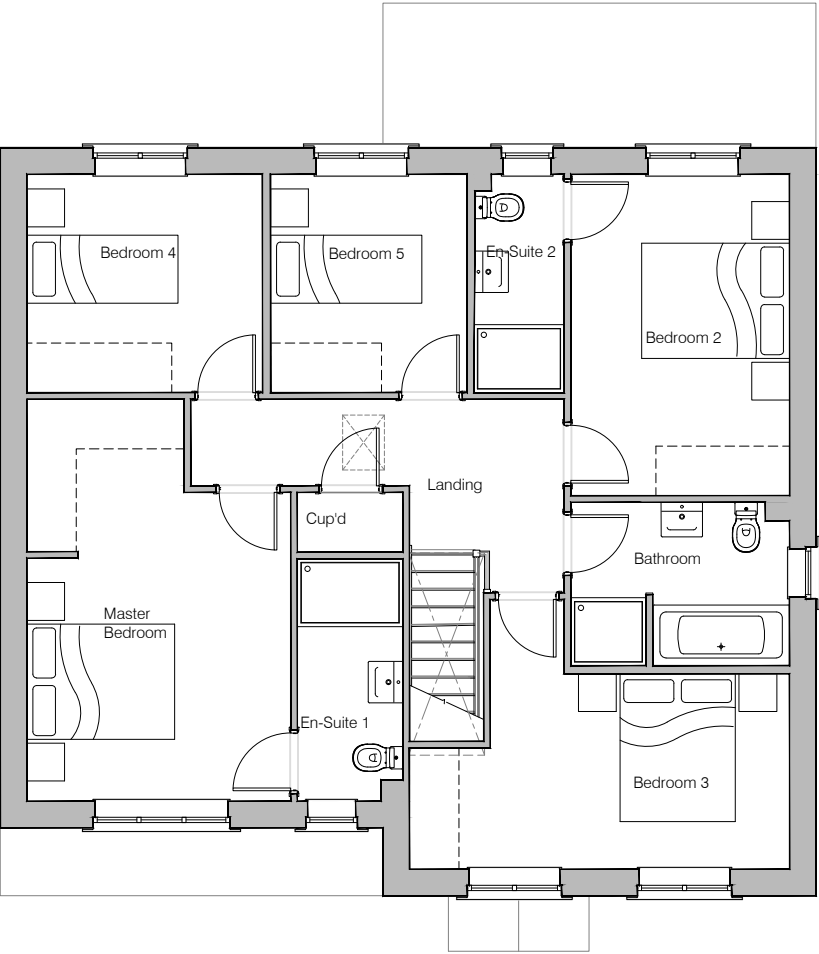
© **Story Homes.**

Story House, Lords Way, Kingmoor Business Park,
Carlisle, Cumbria. CA6 4SL.

Tel 01228 404550
Fax 01228 404551



Ground Floor Layout



First Floor Layout



HOUSE TYPE
MASTERTON (A25)

DRAWING
Planning Layout 1

DRAWN BY	CK	DATE	03.03.25
CHECKED BY	JB, AH	SCALE	1:100@A3
DWG PACK	A/25	DRAWING NUMBER	MTN-PLP1
		REVISION	-

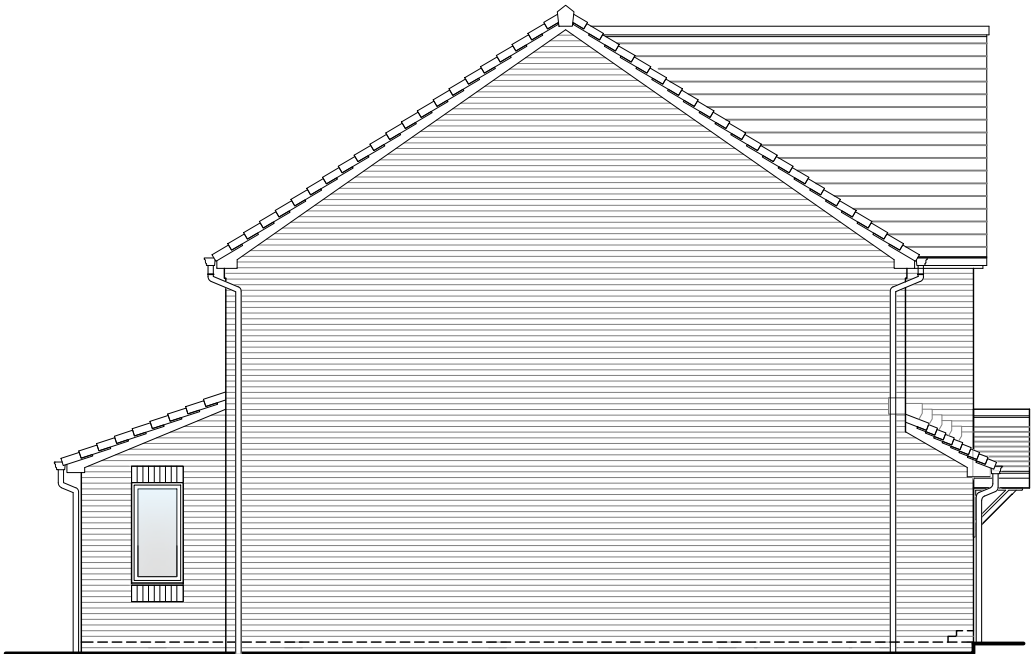
Revisions	Notes	Date

NOTES

PV Solar Panels
Elevations indicate typical arrangement only - number of panels required and location / array to be plot specific. PV panels to be in-roof type.



Front Elevation



Left Elevation



Rear Elevation



Right Elevation



HOUSE TYPE

MASTERTON (A25)

DRAWING

Planning Elevation 1/1

DRAWN BY	CK	DATE	03.03.25
CHECKED BY	JB_AH	SCALE	1:100@A3
DWG PACK	A/25	DRAWING NUMBER	MTN-PLE1/1
		REVISION	-

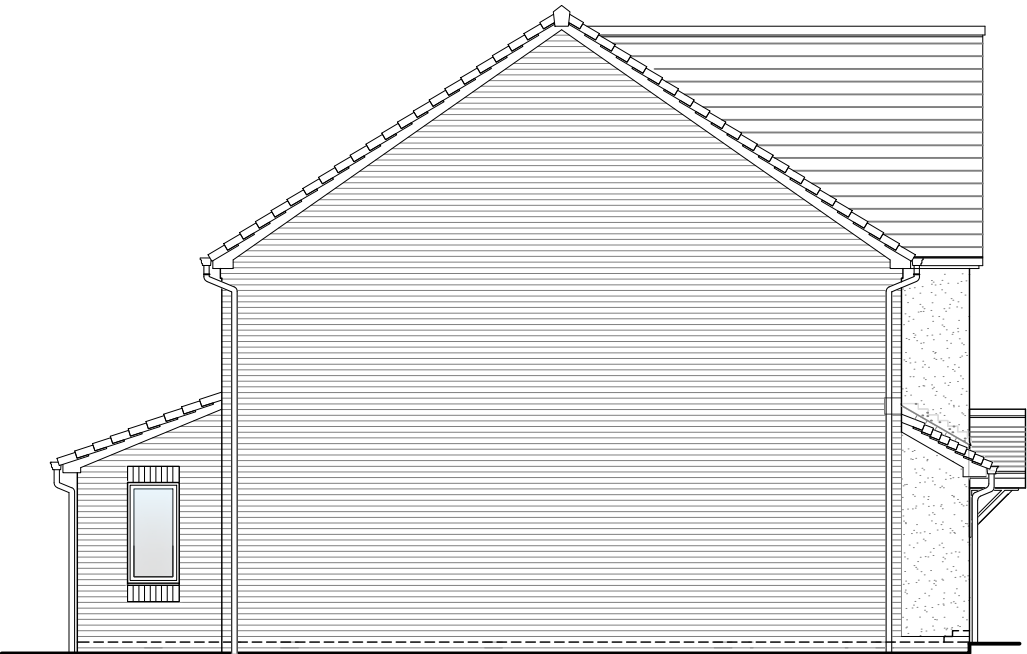
Revisions	Notes	Date

NOTES

PV Solar Panels
Elevations indicate typical arrangement only - number of panels required and location / array to be plot specific. PV panels to be in-roof type.



Front Elevation



Left Elevation



Rear Elevation



Right Elevation



HOUSE TYPE

MASTERTON (A25)

DRAWING

Planning Elevation 1/2

DRAWN BY	CK	DATE	03.03.25
CHECKED BY	JB_AH	SCALE	1:100@A3
DWG PACK	A/25	DRAWING NUMBER	MTN-PLE1/2
		REVISION	-

Revisions	Notes	Date