

Viewpoint 1 - Harrington Parks Farm and England Coast Path junction with Public footpath 262.036, looking North



Viewpoint 1 - Harrington Parks Farm and England Coast Path junction with Public footpath 262.036, looking East

**Viewpoint 1 information:**  
 OS grid reference: E298837 N524458  
 Eye level: 53.3m AOD  
 Direction of view: As shown  
 Nearest turbine: 0.95km  
 Camera: Canon EOS 6D Mk II  
 Lens: 50mm (Canon EF 24-70mm f/4L IS USM)  
 Camera height: 1.5m AGL  
 Date and time: 27/02/20 09:15

Horizontal field of view: 90° (cylindrical projection)  
 Vertical field of view: 14.2°  
 Principal distance: 522mm  
 Paper size: 840 x 297mm (extended A3)  
 Correct printed image size: 820 x 260mm

**Cumulative Viewpoint Photographs**  
  
**LA.11-1.1**

Project no. **A108663**  
 Park House Farm Wind Farm  
  
 March 2020



Viewpoint 1 - Harrington Parks Farm and England Coast Path junction with Public footpath 262.036, looking South



Viewpoint 1 - Harrington Parks Farm and England Coast Path junction with Public footpath 262.036, looking West

**Viewpoint 1 information:**  
 OS grid reference: E298837 N524458  
 Eye level: 53.3m AOD  
 Direction of view: As shown  
 Nearest turbine: 0.95km  
 Camera: Canon EOS 6D Mk II  
 Lens: 50mm (Canon EF 24-70mm f/4L IS USM)  
 Camera height: 1.5m AGL  
 Date and time: 27/02/20 09:15

Horizontal field of view: 90° (cylindrical projection)  
 Vertical field of view: 14.2°  
 Principal distance: 522mm  
 Paper size: 840 x 297mm (extended A3)  
 Correct printed image size: 820 x 260mm

**Cumulative Viewpoint Photographs**

LA.11-1.2

Project no. A108663  
 Park House Farm Wind Farm

March 2020

Cannock Wind Farm Services Ltd



Robin Rigg



Viewpoint 4 - Quayside at Harrington, looking North

Hunday



Viewpoint 4 - Quayside at Harrington, looking East

**Viewpoint 4 information:**

|                    |                 |                |                                     |
|--------------------|-----------------|----------------|-------------------------------------|
| OS grid reference: | E298704 N525158 | Camera:        | Canon EOS 6D Mk II                  |
| Eye level:         | 10.0m AOD       | Lens:          | 50mm (Canon EF 24-70mm f/4L IS USM) |
| Direction of view: | As shown        | Camera height: | 1.5m AGL                            |
| Nearest turbine:   | 1.56km          | Date and time: | 26/02/20 11:57                      |

|                             |                              |
|-----------------------------|------------------------------|
| Horizontal field of view:   | 90° (cylindrical projection) |
| Vertical field of view:     | 14.2°                        |
| Principal distance:         | 522mm                        |
| Paper size:                 | 840 x 297mm (extended A3)    |
| Correct printed image size: | 820 x 260mm                  |

**Cumulative Viewpoint Photographs**

LA.11-2.1

Project no. A108663  
Park House Farm Wind Farm

March 2020

Cannock Wind  
Farm Services Ltd





Viewpoint 4 - Quayside at Harrington, looking South



Viewpoint 4 - Quayside at Harrington, looking West

**Viewpoint 4 information:**  
 OS grid reference: E298704 N525158  
 Eye level: 10.0m AOD  
 Direction of view: As shown  
 Nearest turbine: 1.56km  
 Camera: Canon EOS 6D Mk II  
 Lens: 50mm (Canon EF 24-70mm f/4L IS USM)  
 Camera height: 1.5m AGL  
 Date and time: 26/02/20 11:57

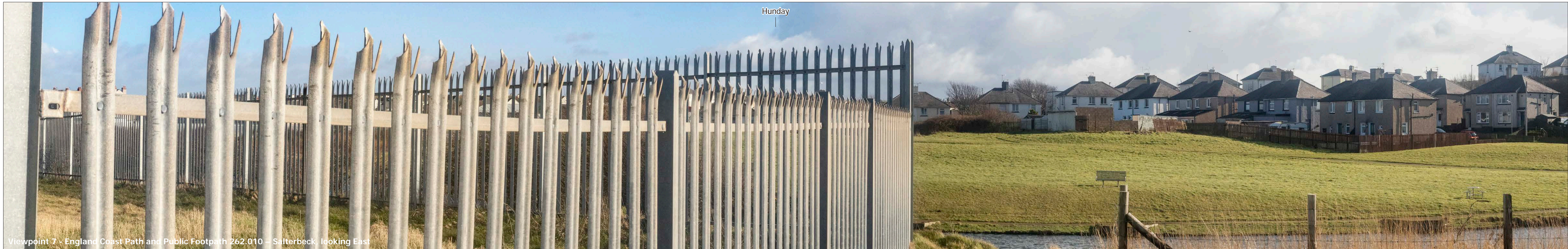
Horizontal field of view: 90° (cylindrical projection)  
 Vertical field of view: 14.2°  
 Principal distance: 522mm  
 Paper size: 840 x 297mm (extended A3)  
 Correct printed image size: 820 x 260mm

**Cumulative Viewpoint Photographs**  
  
 LA.11-2.2

Project no. A108663  
 Park House Farm Wind Farm  
  
 March 2020



Viewpoint 7 - England Coast Path and Public Footpath 262.010 – Salterbeck, looking North



Viewpoint 7 - England Coast Path and Public Footpath 262.010 – Salterbeck, looking East

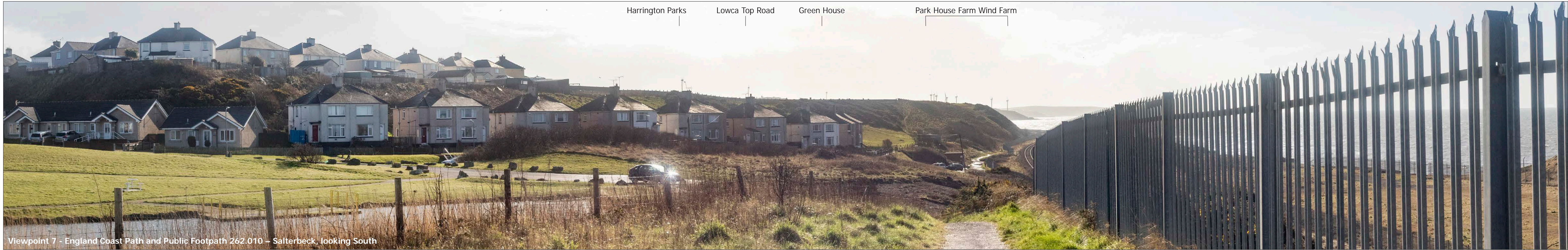
**Viewpoint 7 information:**  
 OS grid reference: E298882 N526674  
 Eye level: 17.7m AOD  
 Direction of view: As shown  
 Nearest turbine: 3.09km  
 Camera: Canon EOS 6D Mk II  
 Lens: 50mm (Canon EF 24-70mm f/4L IS USM)  
 Camera height: 1.5m AGL  
 Date and time: 26/02/20 12:27

Horizontal field of view: 90° (cylindrical projection)  
 Vertical field of view: 14.2°  
 Principal distance: 522mm  
 Paper size: 840 x 297mm (extended A3)  
 Correct printed image size: 820 x 260mm

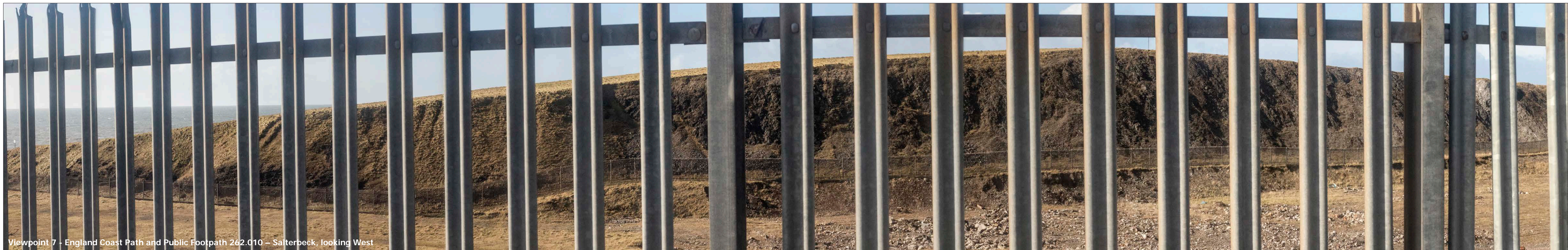
**Cumulative Viewpoint Photographs**  
 LA.11-3.1

Project no. A108663  
 Park House Farm Wind Farm  
 March 2020





Viewpoint 7 - England Coast Path and Public Footpath 262.010 – Salterbeck, looking South



Viewpoint 7 - England Coast Path and Public Footpath 262.010 – Salterbeck, looking West

**Viewpoint 7 information:**  
 OS grid reference: E298882 N526674  
 Eye level: 17.7m AOD  
 Direction of view: As shown  
 Nearest turbine: 3.09km  
 Camera: Canon EOS 6D Mk II  
 Lens: 50mm (Canon EF 24-70mm f/4L IS USM)  
 Camera height: 1.5m AGL  
 Date and time: 26/02/20 12:27

Horizontal field of view: 90° (cylindrical projection)  
 Vertical field of view: 14.2°  
 Principal distance: 522mm  
 Paper size: 840 x 297mm (extended A3)  
 Correct printed image size: 820 x 260mm

**Cumulative Viewpoint Photographs**  
  
**LA.11-3.2**

Project no. A108663  
 Park House Farm Wind Farm  
  
 March 2020



VViewpoint 8 - Public Footpath 417.008 at Quality Corner, looking North



Viewpoint 8 - Public Footpath 417.008 at Quality Corner, looking East

**Viewpoint 8 information:**  
 OS grid reference: E298702 N519881  
 Eye level: 136.3m AOD  
 Direction of view: As shown  
 Nearest turbine: 3.0km  
 Camera: Canon EOS 6D Mk II  
 Lens: 50mm (Canon EF 24-70mm f/4L IS USM)  
 Camera height: 1.5m AGL  
 Date and time: 26/02/20 15:00

Horizontal field of view: 90° (cylindrical projection)  
 Vertical field of view: 14.2°  
 Principal distance: 522mm  
 Paper size: 840 x 297mm (extended A3)  
 Correct printed image size: 820 x 260mm

**Cumulative Viewpoint Photographs**

LA.11-4.1

Project no. A108663  
 Park House Farm Wind Farm

March 2020

Cannock Wind Farm Services Ltd





VViewpoint 8 - Public Footpath 417.008 at Quality Corner, looking South



Viewpoint 8 - Public Footpath 417.008 at Quality Corner, looking West

**Viewpoint 8 information:**  
 OS grid reference: E298702 N519881  
 Eye level: 136.3m AOD  
 Direction of view: As shown  
 Nearest turbine: 3.0km  
 Camera: Canon EOS 6D Mk II  
 Lens: 50mm (Canon EF 24-70mm f/4L IS USM)  
 Camera height: 1.5m AGL  
 Date and time: 26/02/20 15:00

Horizontal field of view: 90° (cylindrical projection)  
 Vertical field of view: 14.2°  
 Principal distance: 522mm  
 Paper size: 840 x 297mm (extended A3)  
 Correct printed image size: 820 x 260mm

**Cumulative Viewpoint Photographs**  
  
**LA.11-4.2**

Project no. A108663  
 Park House Farm Wind Farm  
  
 March 2020





Viewpoint 13 - Public Bridleway 250026, south west of Seaton, looking North



Viewpoint 13 - Public Bridleway 250026, south west of Seaton, looking East

**Viewpoint 13 information:**  
 OS grid reference: E301025 N530121  
 Eye level: 42.8m AOD  
 Direction of view: As shown  
 Nearest turbine: 7.01km  
 Camera: Canon EOS 6D Mk II  
 Lens: 50mm (Canon EF 24-70mm f/4L IS USM)  
 Camera height: 1.5m AGL  
 Date and time: 26/02/20 11:22

Horizontal field of view: 90° (cylindrical projection)  
 Vertical field of view: 14.2°  
 Principal distance: 522mm  
 Paper size: 840 x 297mm (extended A3)  
 Correct printed image size: 820 x 260mm

**Cumulative Viewpoint Photographs**

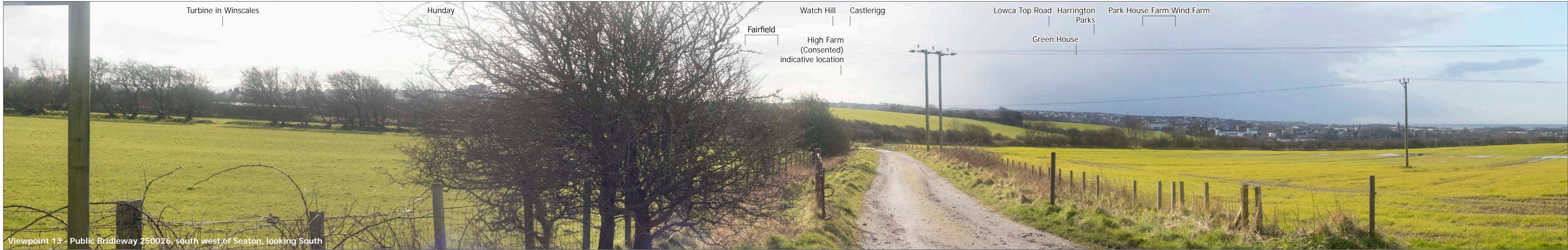
LA.11-5.1

Project no. A108663  
 Park House Farm Wind Farm

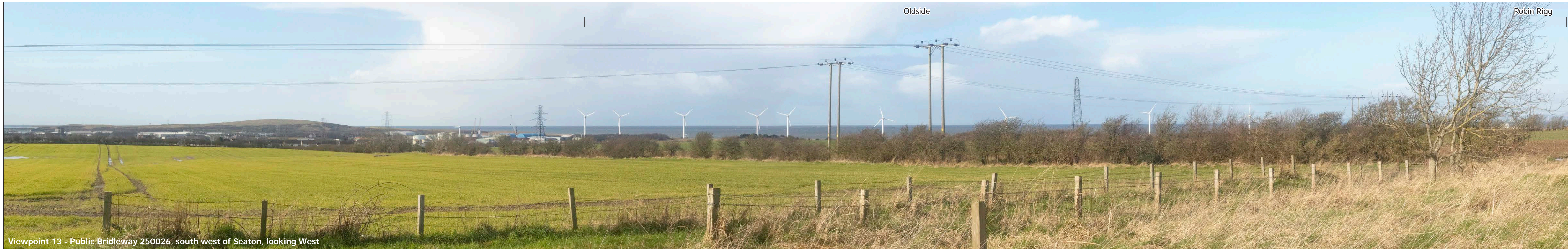
March 2020

Cannock Wind Farm Services Ltd





Viewpoint 13 - Public Bridleway 250026, south west of Seaton, looking South



Viewpoint 13 - Public Bridleway 250026, south west of Seaton, looking West

**Viewpoint 13 information:**  
 OS grid reference: E301025 N530121  
 Eye level: 42.8m AOD  
 Direction of view: As shown  
 Nearest turbine: 7.01km  
 Camera: Canon EOS 6D Mk II  
 Lens: 50mm (Canon EF 24-70mm f/4L IS USM)  
 Camera height: 1.5m AGL  
 Date and time: 26/02/20 11:22

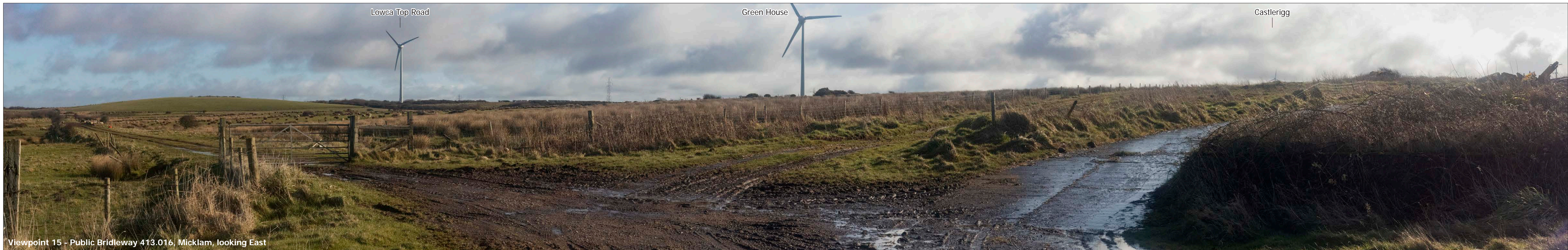
Horizontal field of view: 90° (cylindrical projection)  
 Vertical field of view: 14.2°  
 Principal distance: 522mm  
 Paper size: 840 x 297mm (extended A3)  
 Correct printed image size: 820 x 260mm

**Cumulative Viewpoint Photographs**  
 LA.11-5.2

Project no. A108663  
 Park House Farm Wind Farm  
 March 2020



Viewpoint 15 - Public Bridleway 413.016, Micklam, looking North



Viewpoint 15 - Public Bridleway 413.016, Micklam, looking East

**Viewpoint 15 information:**  
 OS grid reference: E298140 N522382  
 Eye level: 75.0m AOD  
 Direction of view: As shown  
 Nearest turbine: 0.44km  
 Camera: Canon EOS 6D Mk II  
 Lens: 50mm (Canon EF 24-70mm f/4L IS USM)  
 Camera height: 1.5m AGL  
 Date and time: 27/02/20 10:25

Horizontal field of view: 90° (cylindrical projection)  
 Vertical field of view: 14.2°  
 Principal distance: 522mm  
 Paper size: 840 x 297mm (extended A3)  
 Correct printed image size: 820 x 260mm

**Cumulative Viewpoint Photographs**  
  
**LA.11-6.1**

Project no. A108663  
 Park House Farm Wind Farm  
  
 March 2020



Viewpoint 15 - Public Bridleway 413.016, Micklam, looking South



Viewpoint 15 - Public Bridleway 413.016, Micklam, looking West

**Viewpoint 15 information:**  
 OS grid reference: E298140 N522382  
 Eye level: 75.0m AOD  
 Direction of view: As shown  
 Nearest turbine: 0.44km  
 Camera: Canon EOS 6D Mk II  
 Lens: 50mm (Canon EF 24-70mm f/4L IS USM)  
 Camera height: 1.5m AGL  
 Date and time: 27/02/20 10:25

Horizontal field of view: 90° (cylindrical projection)  
 Vertical field of view: 14.2°  
 Principal distance: 522mm  
 Paper size: 840 x 297mm (extended A3)  
 Correct printed image size: 820 x 260mm

**Cumulative Viewpoint Photographs**  
  
**LA.11-6.2**

Project no. A108663  
 Park House Farm Wind Farm  
  
 March 2020