

Rev	Description	Date
A	Levels and Sections	13/08/21

CODE	SUITABILITY DESCRIPTION
STATUS	PURPOSE OF ISSUE

PROJECT
---------

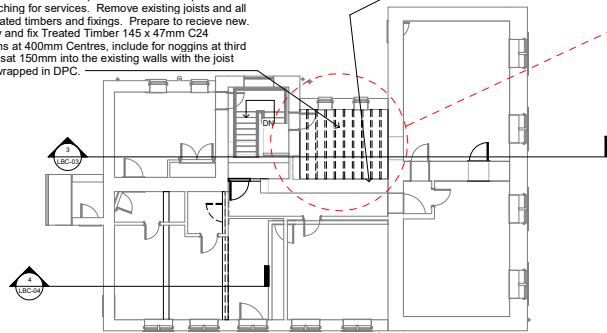
Seascale Hall Farm

TITLE  
Discharge Condition  
Drawing

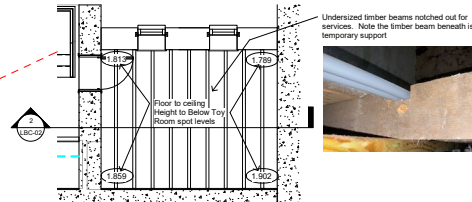
CLIENT		
NDA Properties Limited		
DRAWN BY SWB	CHECKED BY OH	DATE 16/07/21
SCALE (@ A1) As indicated	PROJECT NUMBER 144	
DRAWING NUMBER LBC-02		REV A

Remove existing floorboards and set aside for re-use. Note the existing floor boards are between 19mm and 22mm deep and are random widths ranging from 150 - 250mm approx. The existing Ceiling Joists are 100mm deep, refer to structural engineer report as these are determined to be inadequate with some compromised by notching for services. Remove existing joists and all associated timbers and fixings. Prepare to receive new. Supply and fix Treated Timber 145 x 47mm C24 sections at 400mm Centres, include for noggin's at third points sat 150mm into the existing walls with the joist ends wrapped in DPC.

Remove existing inadequate timber lintel and replace with 140 x 100 lbstock Ltd Supreme R15A precast concrete lintels with end bearing 150mm, number to suite wall thickness.

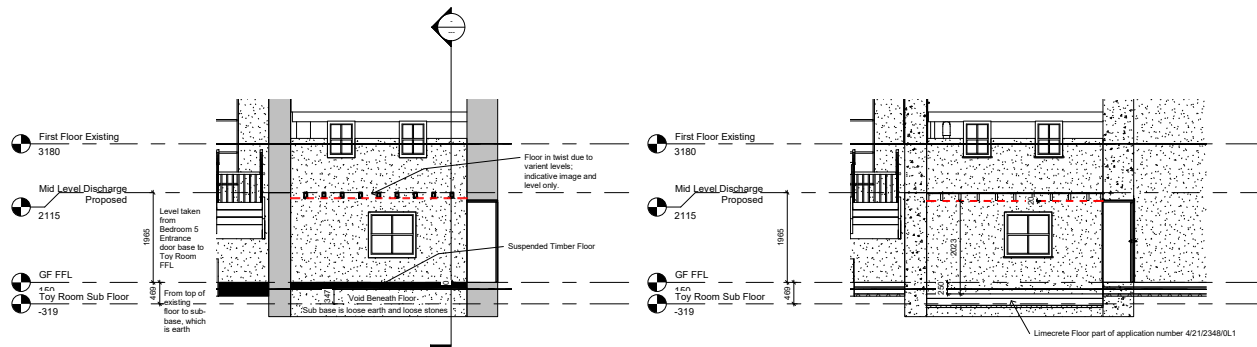


Bedroom 5 (Mid Level from stairs)



4 Mid Level Discharge Existing  
1 : 50

1 Mid Level Discharge Proposed  
1 : 100



2 Section 5 Existing  
1 : 50

3 Section 5 Proposed  
1 : 50