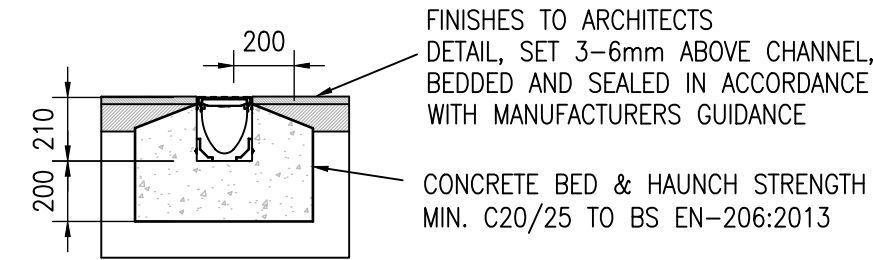
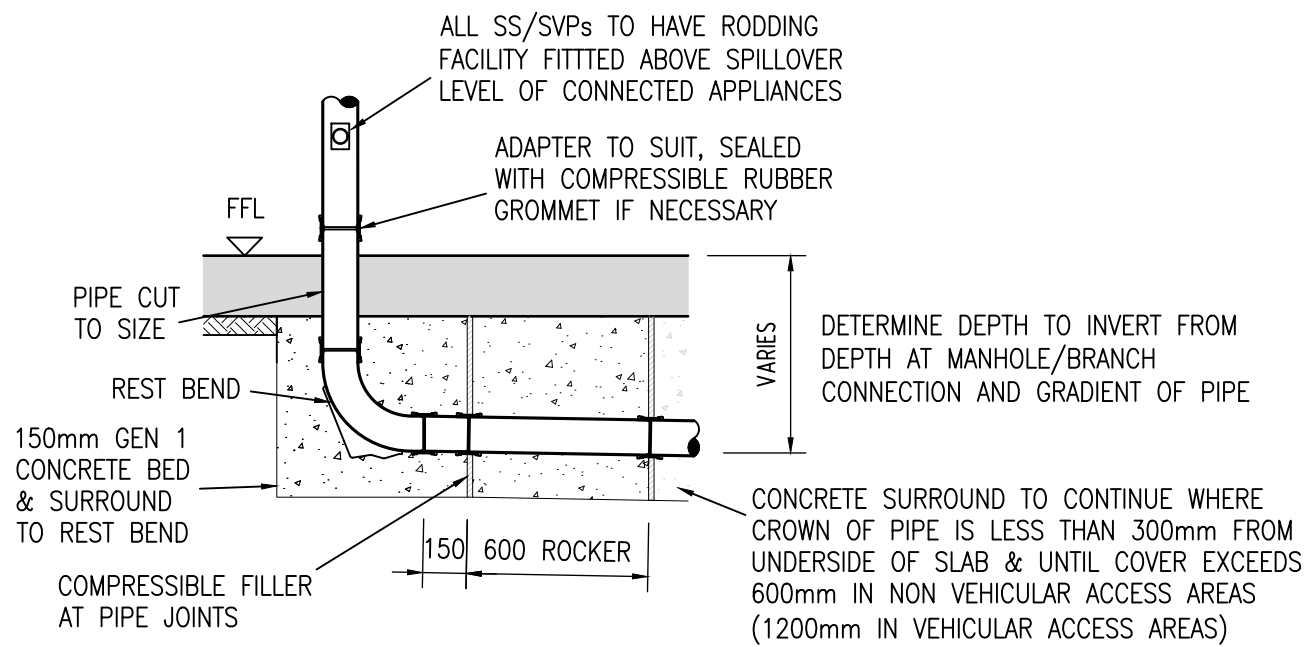


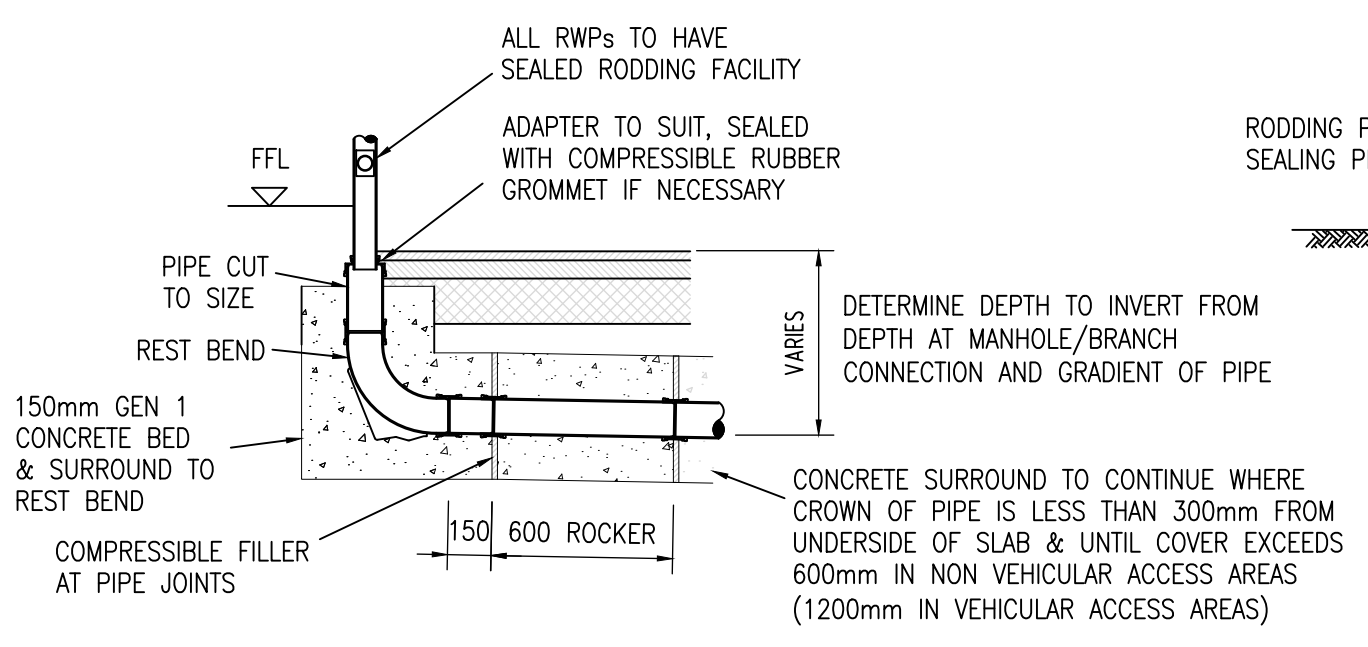
**TYPICAL ACO MULTIDRAIN M150D 0.0J DETAIL WITH GRATING TO LOAD CLASS B125/C250.**



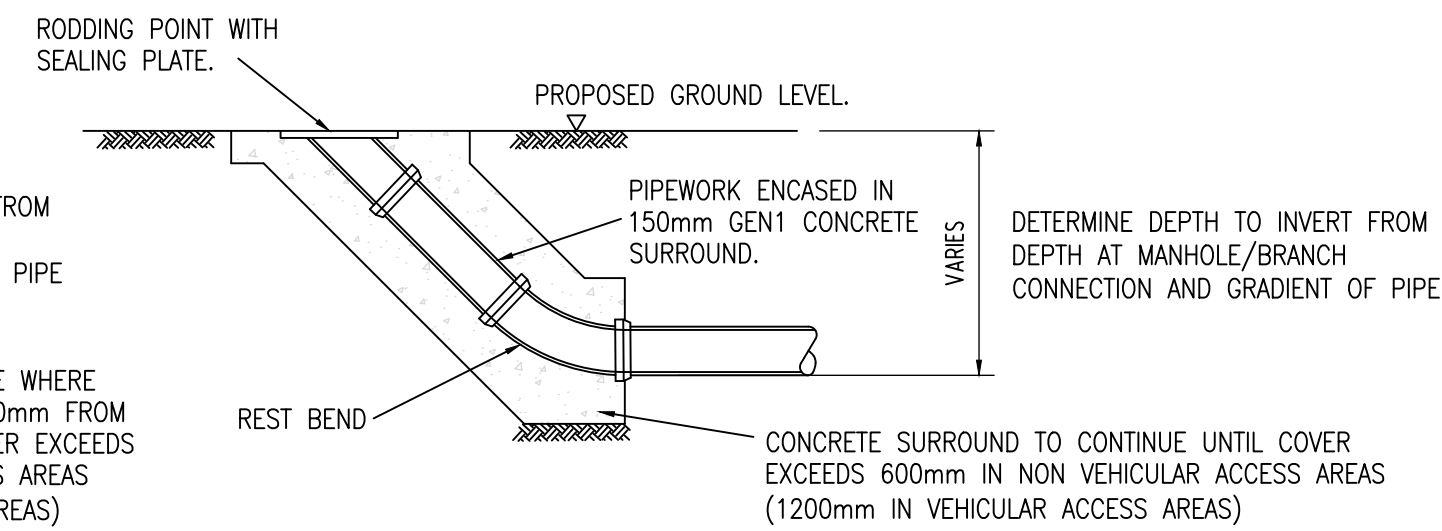
**TYPICAL ACO MULTIDRAIN M150D 0.0J DETAIL WITH GRATING TO LOAD CLASS D400.**



**TYPICAL SS/SVP CONNECTION**

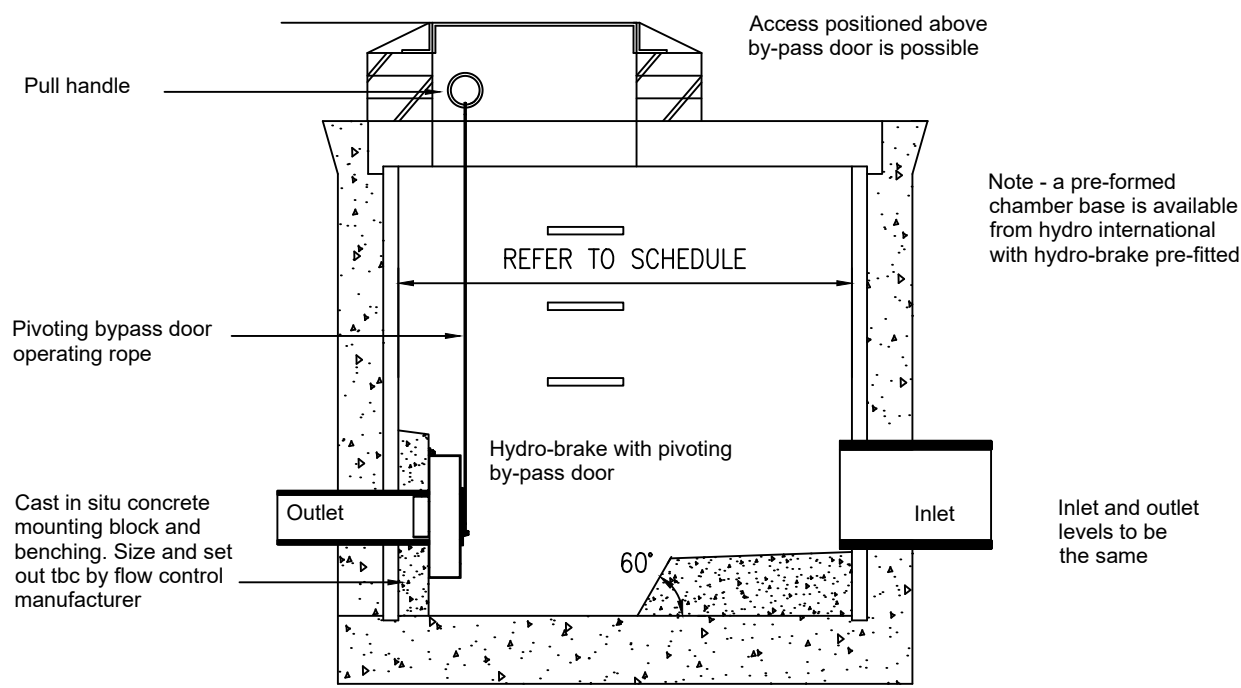


**TYPICAL RWP CONNECTION**

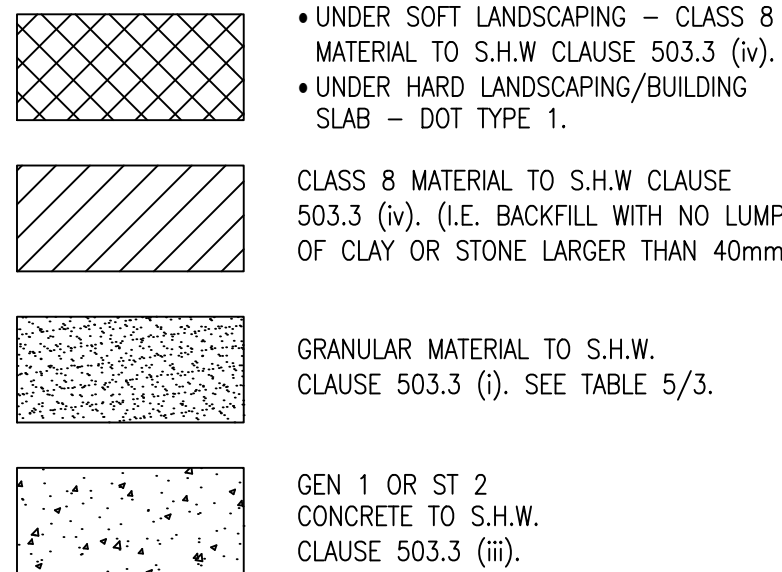
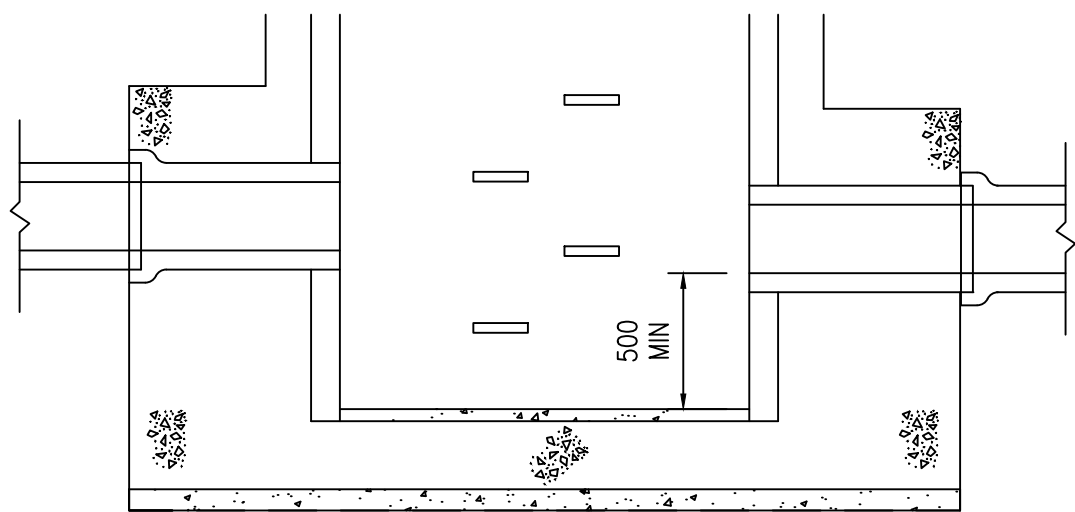


**EXTERNAL RODDING EYE DETAIL**

**TYPICAL HYDROBRAKE MANHOLE DETAIL**  
REFER TO HYDRO INTERNATIONAL DRAWINGS FOR SITE SPECIFIC DETAILS



**TYPICAL CATCHPIT MANHOLE DETAIL**



- NOTES:**
- ALL DIMENSIONS ARE IN MILLIMETRES.
  - DIMENSION X IS THE EXTERNAL PIPE DIAMETER.
  - THE MIN/MAX WIDTH OF TRENCH APPLIES ON & BELOW A LINE 300mm ABOVE THE TOP OF THE PIPE. ABOVE THE 300mm LINE TRENCH BACKFILL MATERIAL SHALL BE AS DESCRIBED IN CLAUSE 505 OF S.H.W.
  - CONCRETE SURROUND MAY EXTEND TO SIDES OF TRENCH OR BE OF MINIMUM WIDTH TO PROVIDE 150mm COVER AT EACH SIDE OF THE PIPE.
  - UNTIL THERE IS 300mm COVER OVER CROWN OF PIPE, COMPACT GRANULAR & BACKFILL MATERIAL BY HAND IN 100mm THICK LAYERS.

**CLASS S BEDDING DETAIL (UPVC/FLEXIBLE PIPES)**

FOR USE WHEN COVER TO SOFFIT OF PIPE IS GREATER THAN 600mm IN NON-TRAFFICKED AREAS AND GREATER THAN 1200mm IN AREAS WITH VEHICULAR ACCESS.

**CLASS Z BEDDING DETAIL (ALL PIPES)**

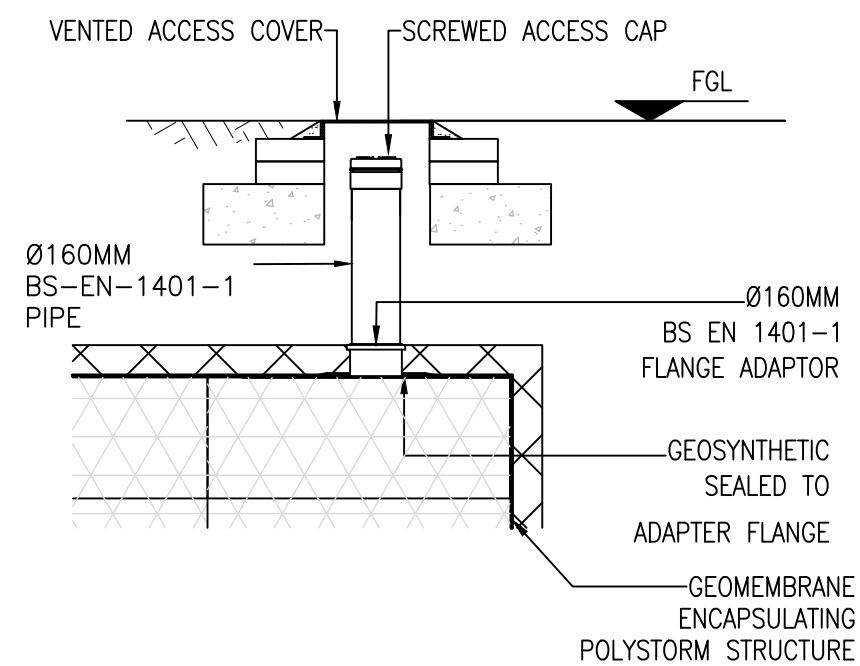
FOR USE WHEN COVER TO SOFFIT OF PIPE IS LESS THAN 600mm IN NON-TRAFFICKED AREAS AND LESS THAN 1200mm IN AREAS WITH VEHICULAR ACCESS. MIN. 18mm COMPRESSIBLE BOARD AT ALL PIPE JOINTS

**CLASS B BEDDING DETAIL (CLAY/CONCRETE ONLY)**

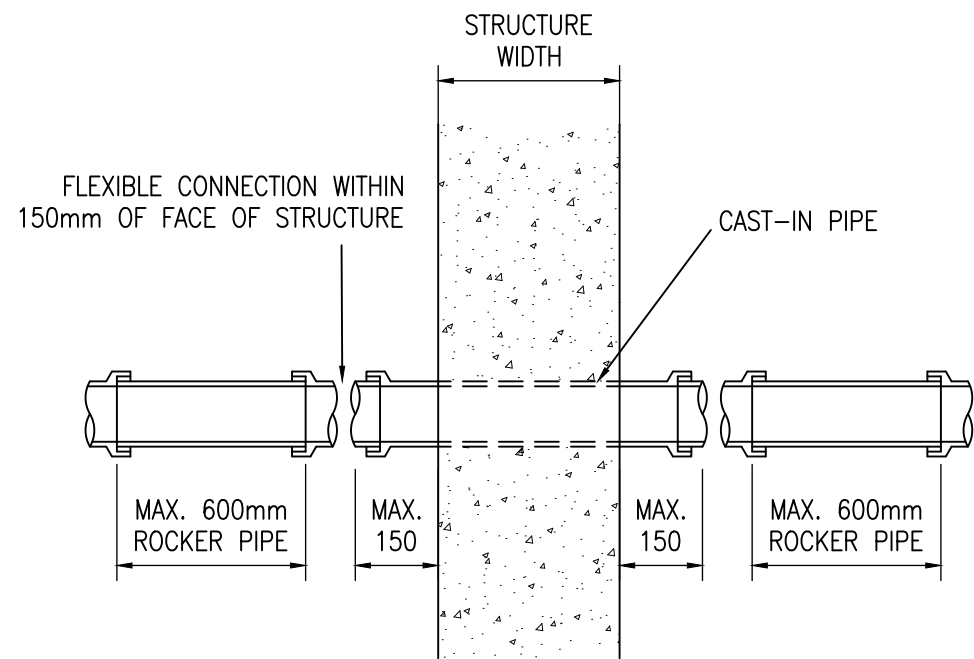
FOR USE WHEN COVER TO SOFFIT OF PIPE IS GREATER THAN 600mm IN NON-TRAFFICKED AREAS AND GREATER THAN 1200mm IN AREAS WITH VEHICULAR ACCESS.

CLASS S/B GRANULAR BEDDING MATERIAL - S.H.W 503 (i) TABLE 5/3 [BS EN 13242] -		
NOMINAL PIPE DIAMETER (mm)	SINGLE SIZED COARSE AGGREGATE (mm)	GRADED COARSE AGGREGATE (mm)
NOT EXCEEDING 140	4/10	-
EXCEEDING 140 BUT NOT EXCEEDING 400	4/10, 6/10 OR 10/20	2/14 OR 4/20
EXCEEDING 400	4/10, 6/14, 10/20 OR 20/40	2/14, 4/20 OR 4/40

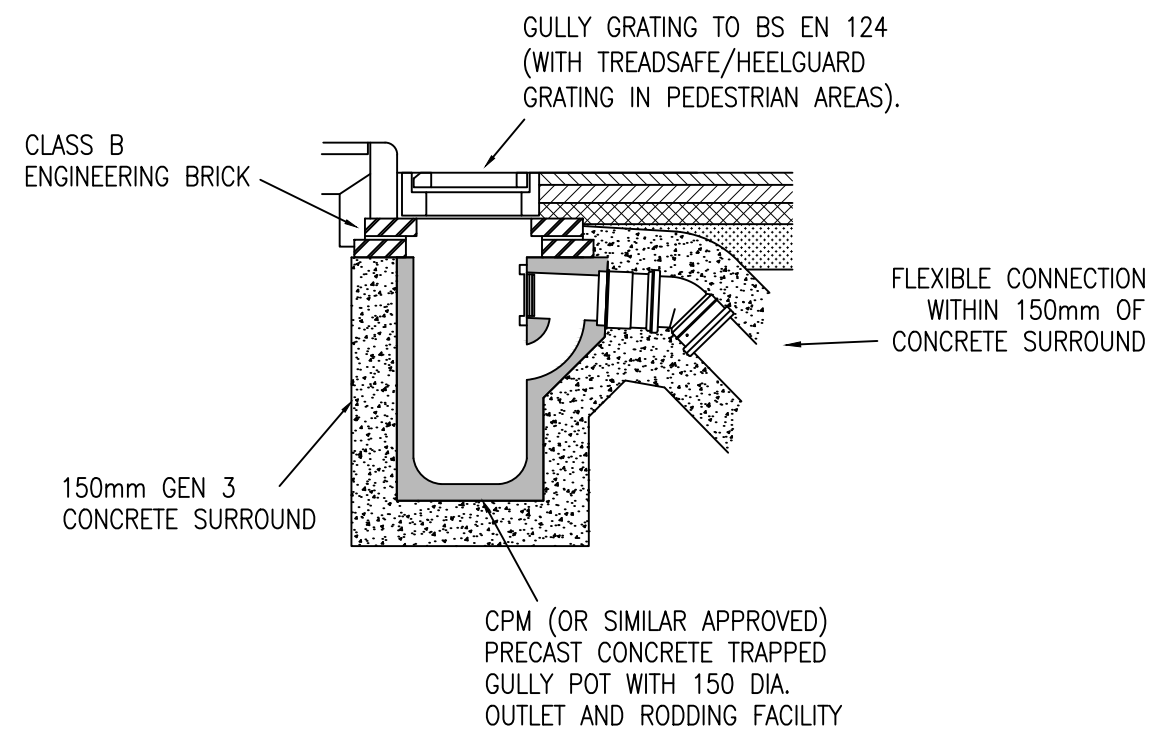
CLASS Z COMPRESSIBLE FILLER BOARD DETAILS	
NOMINAL PIPE DIAMETER (mm)	THICKNESS OF COMPRESSIBLE FILLER (mm)
LESS THAN 450	18
450 - 1200	36
GREATER THAN 1200	54



**TYPICAL TANK VENTILATION DETAIL**



**PLAN SHOWING PIPE PENETRATION THROUGH STRUCTURE (ROCKER OPTION)**



**TYPICAL PRECAST CONCRETE ROAD GULLY DETAIL**

General Notes

P2	11.08.23	ISSUED FOR PLANNING.	M.H	C.J.H
P1	06/07/23	PRELIMINARY ISSUE	OJ	C.J.H
Rev	Date	Comment	By	Check

Status Code	Drawing Status
S3	FOR APPROVAL

This drawing may only be used for construction/manufacture if status is CONSTRUCTION

**Furness Partnership**  
Consulting Structural/Civil Engineers

London 20 Britton Street, London, EC1M 5TX  
tel: 020 7490 4353 fax: 020 7490 4354  
e-mail: info@furnesspartnership.com

Bradford The Paper Hall, Anne Gate, Bradford, BD1 4EQ  
tel: 01274 392092  
e-mail: mail@furnesspartnership.com

Project

MILLOM LEISURE CENTRE

Drawing Title

**PROPOSED FOUL WATER DRAINAGE LAYOUT**

FP Job No.	Drawn	Date	Checked	Scale @ A1
L2762	O.J	JUN '23	C.J.H	N/A

PROJECT	OPERATOR	ZONE / VOLUME	LEVEL / LOCATION	FILE TYPE	ROLE	SHEET No.	Rev.
L2762	FUR	XX	XX	DR	D	0932	P2