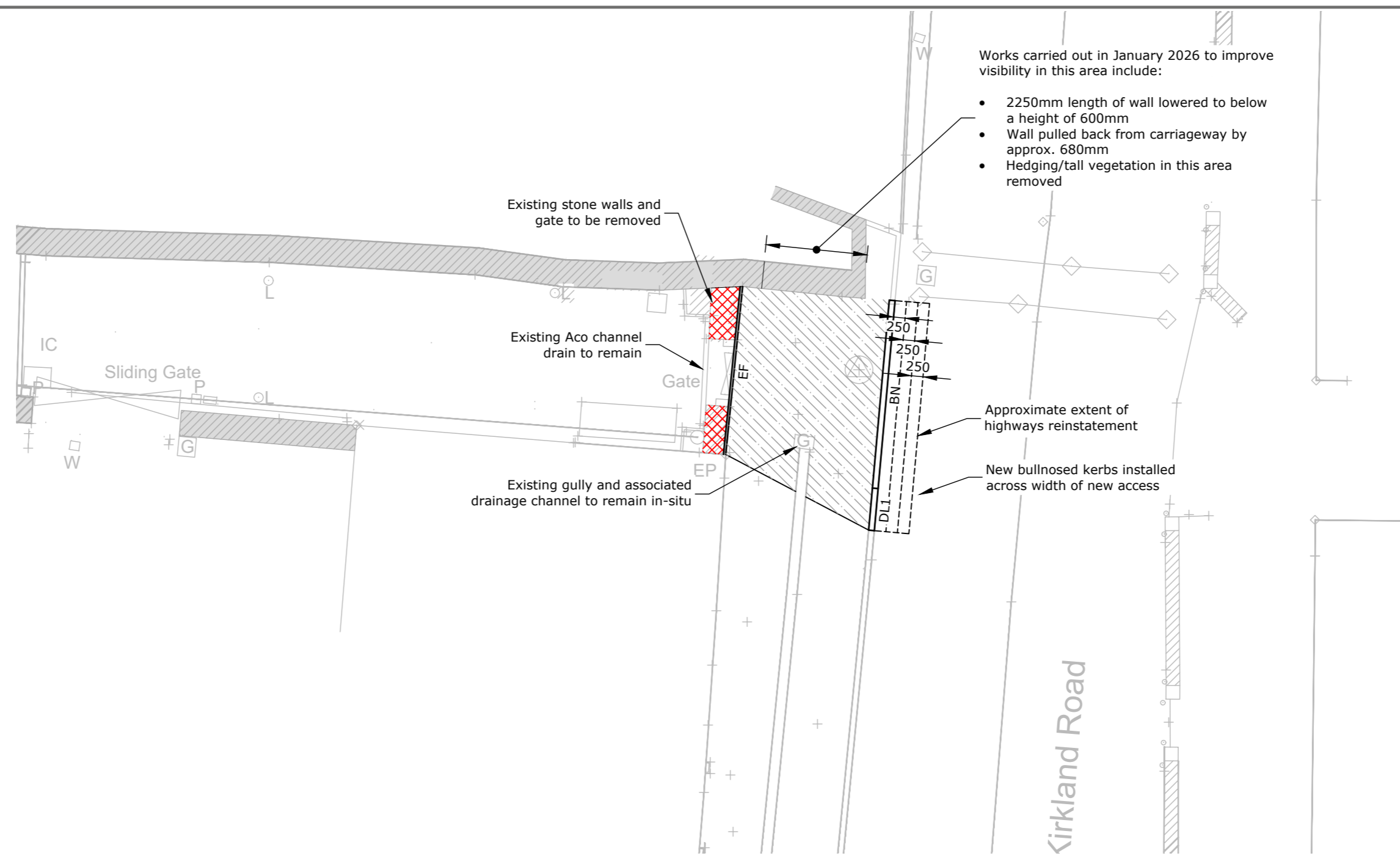




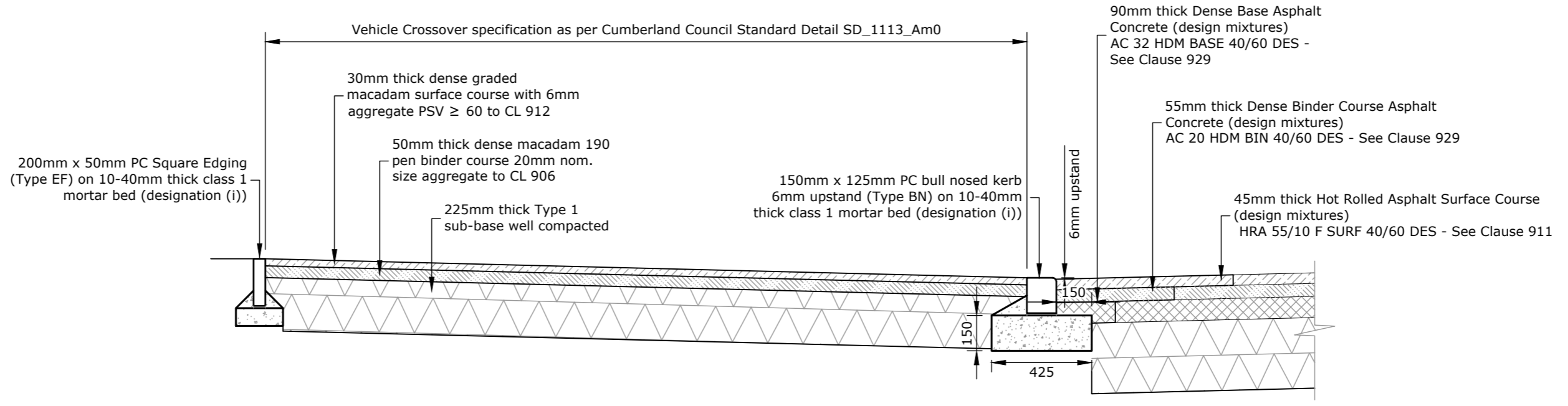
Plan on Visibility Splays
Scale 1:200



New Access Plan
Scale 1:100

- Works carried out in January 2026 to improve visibility in this area include:
- 2250mm length of wall lowered to below a height of 600mm
 - Wall pulled back from carriageway by approx. 680mm
 - Hedging/tall vegetation in this area removed

- General**
1. This drawing should not be scaled - use figured dimensions only. If in doubt, ask.
 2. All dimensions are in millimetres unless stated otherwise.
 3. This drawing is to be read in conjunction with all relevant Architects drawings as well as all other drawings by RG Parkins (refer to RG Parkins drawing register).
 4. The Contractor is responsible for verifying all dimensions on site prior to commencing works.
 5. Any specified proprietary products are to be installed in strict accordance with manufacturers guidelines. No specified product should be substituted without gaining approval from RG Parkins.



Typical Section through New Access
Scale 1:20

Rev	Description	Date	Revised by	Checked by	Approved
B	Plan updated to show amendments to wall previously carried out	05/05/26	MWG	RW	RW
A	Section updated and visibility splays plan added	01/05/26	MWG	RW	RW

Issue Purpose: **Planning**

Do not scale from this drawing

RG PARKINS
Kendal | 01539 729393 Lancaster | 01524 32548

Client: **Robert Gould**
Project: **Kirkland Chapel, Kirkland**
Drawing Title: **New Access Plan and Details**

Scale @ A2: **As shown**
First Issue: **04/03/26**
Office of Origin: **Kendal**
Drawn by: **MWG**
Checked by: **RW**
Approved: **RW**
Project No: **K42665**
Drawing No: **02**
Rev: **B**
BIM No: