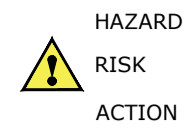


General

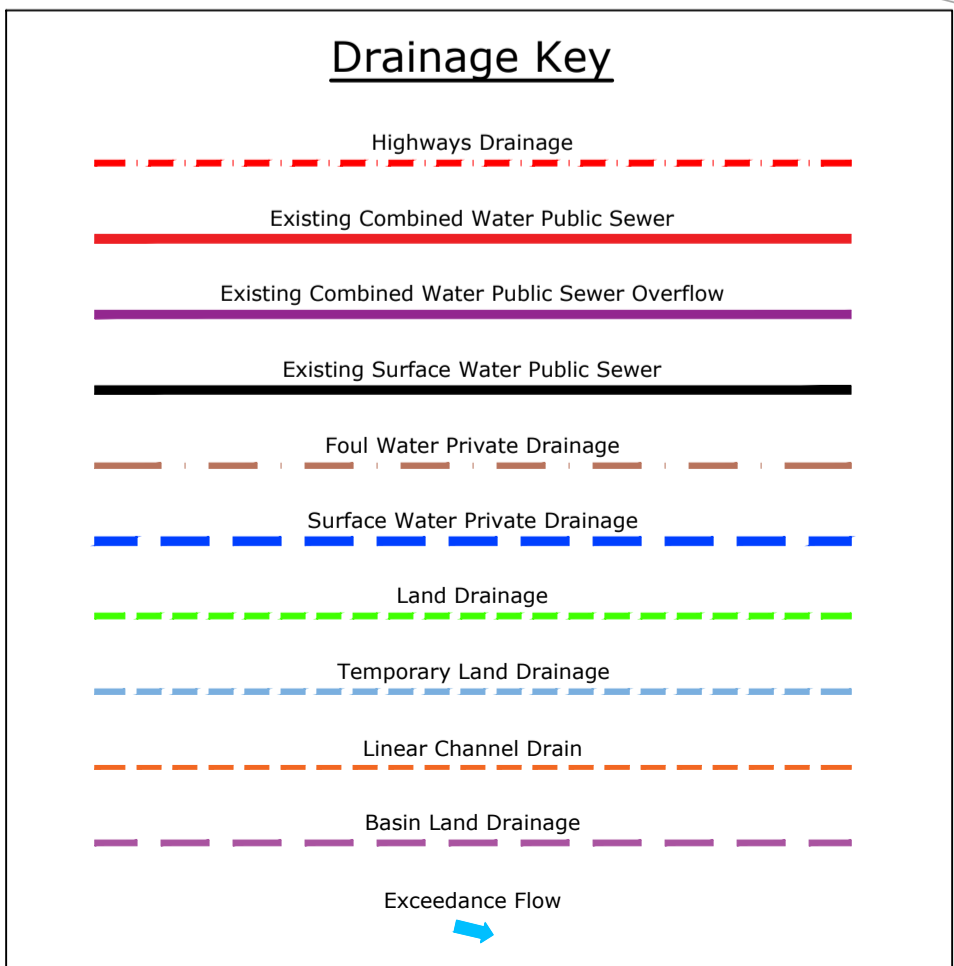
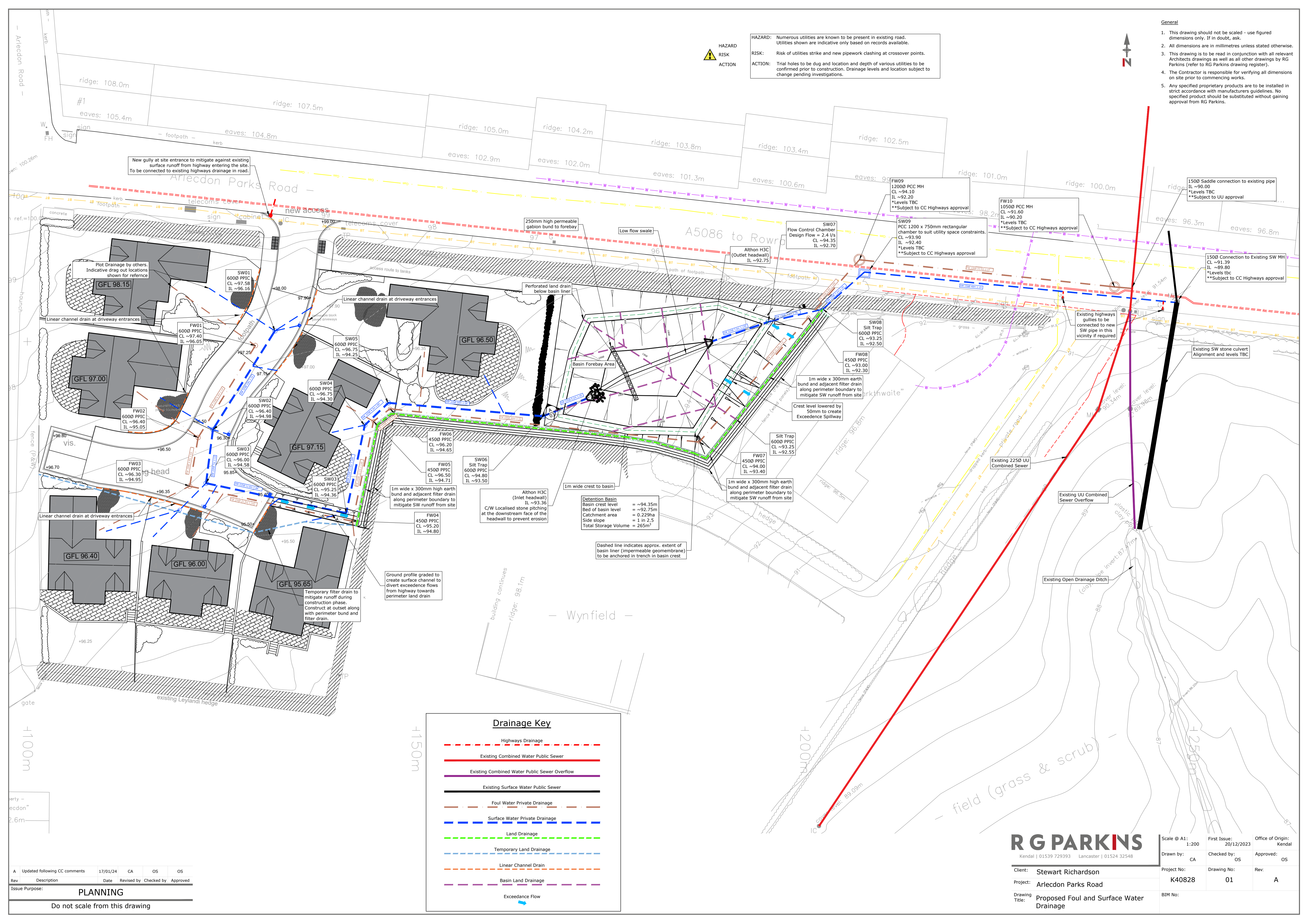
1. This drawing should not be scaled - use figured dimensions only. If in doubt, ask.
2. All dimensions are in millimetres unless stated otherwise.
3. This drawing is to be read in conjunction with all relevant Architects drawings as well as all other drawings by RG Parkins (refer to RG Parkins drawing register).
4. The Contractor is responsible for verifying all dimensions on site prior to commencing works.
5. Any specified proprietary products are to be installed in strict accordance with manufacturers guidelines. No specified product should be substituted without gaining approval from RG Parkins.



HAZARD: Numerous utilities are known to be present in existing road. Utilities shown are indicative only based on records available.

RISK: Risk of utilities strike and new pipework clashing at crossover points.

ACTION: Trial holes to be dug and location and depth of various utilities to be confirmed prior to construction. Drainage levels and location subject to change pending investigations.



Detention Basin
 Basin crest level = ~-94.35m
 Bed of basin level = ~-92.75m
 Catchment area = 0.229ha
 Side slope = 1 in 2.5
 Total Storage Volume = 265m³

Althon H3C (Inlet headwall)
 IL ~-93.36
 C/W Localised stone pitching at the downstream face of the headwall to prevent erosion

Ground profile graded to create surface channel to divert exceedance flows from highway towards perimeter land drain

Rev	Description	Date	Revised by	Checked by	Approved
A	Updated following CC comments	17/01/24	CA	OS	OS

Issue Purpose: **PLANNING**

Do not scale from this drawing

RG PARKINS
 Kendal | 01539 729393 | Lancaster | 01524 32548

Client: **Stewart Richardson**
 Project: **Arlcedon Parks Road**
 Drawing Title: **Proposed Foul and Surface Water Drainage**

Scale @ A1: 1:200	First Issue: 20/12/2023	Office of Origin: Kendal
Drawn by: CA	Checked by: OS	Approved: OS
Project No: K40828	Drawing No: 01	Rev: A
BIM No:		