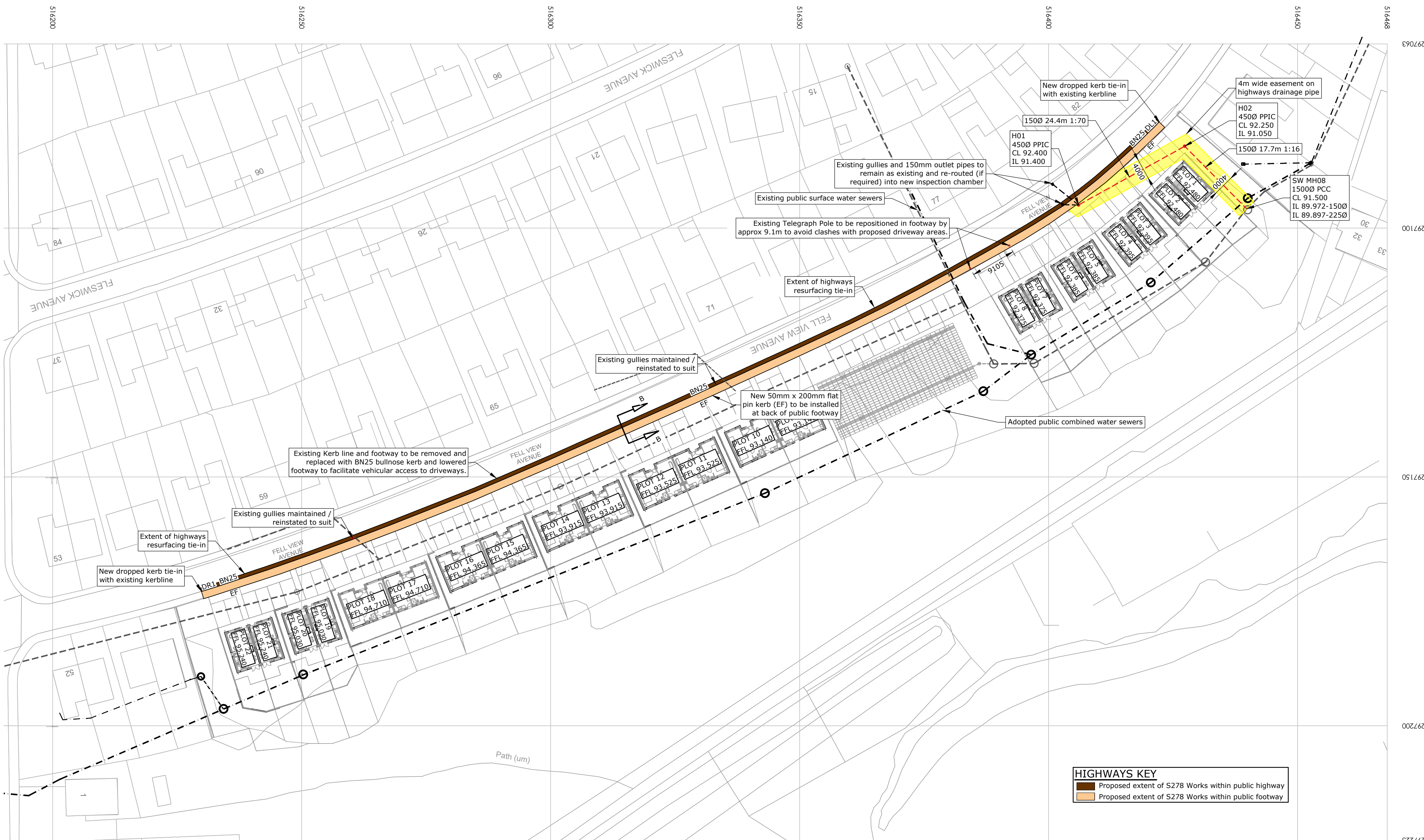




SITE LOCATION PLAN

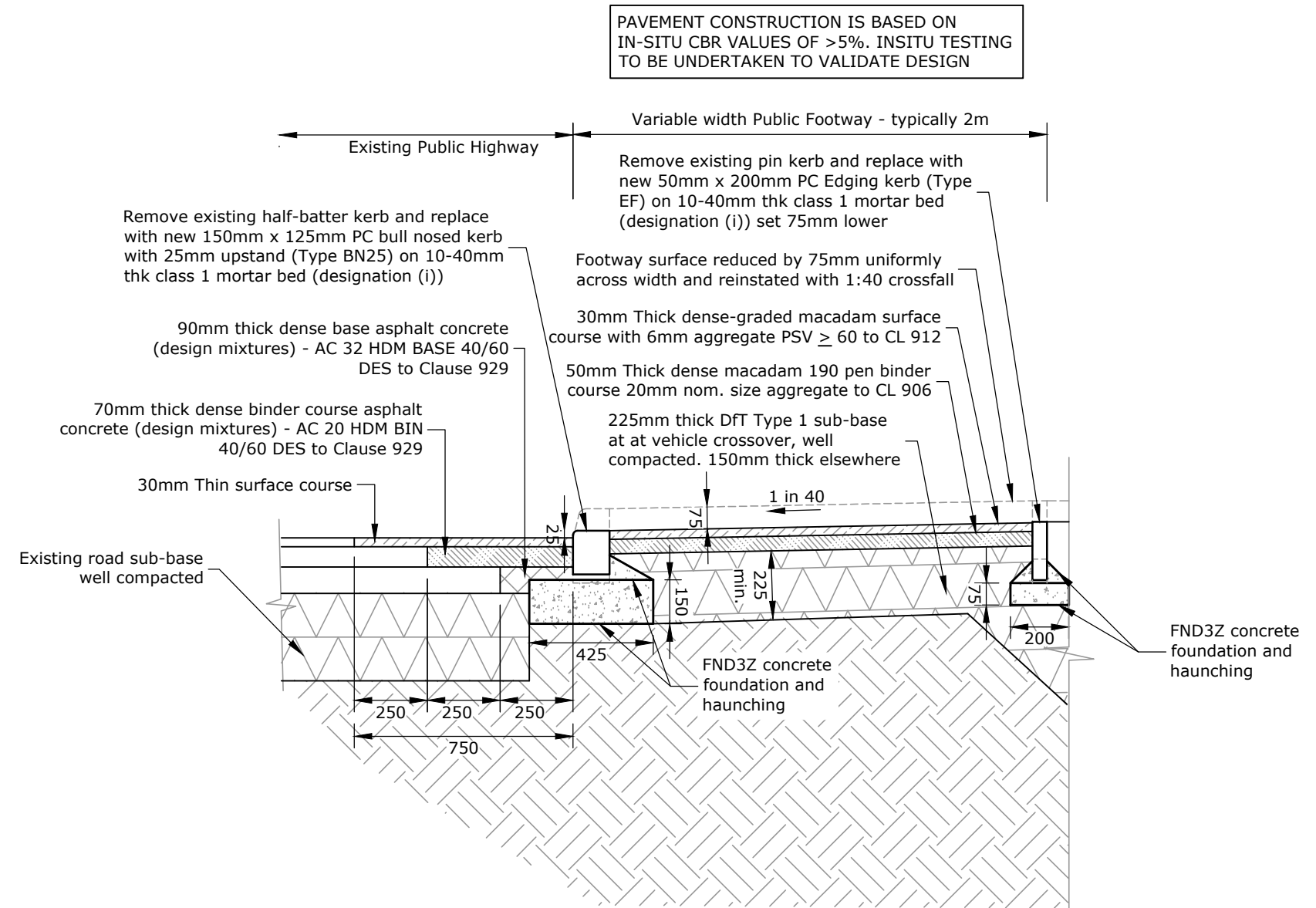
SCALE 1:1000



PLAN OF
S278 WORKS

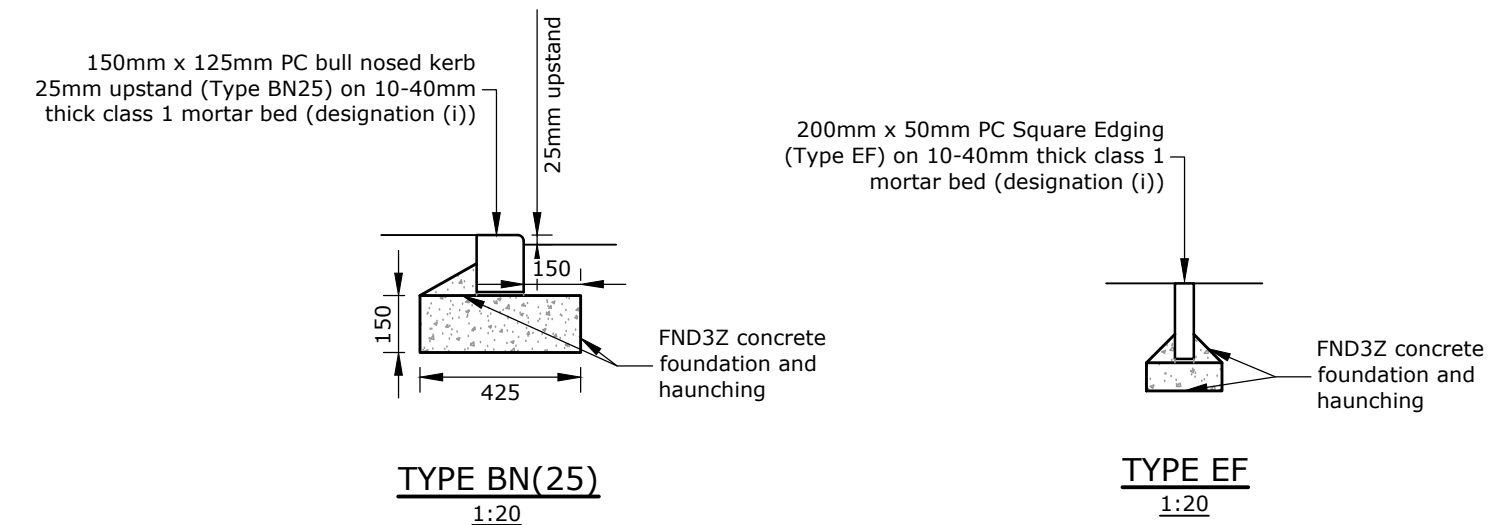
SCALE 1:500

HIGHWAYS KEY
Proposed extent of S278 Works within public highway
Proposed extent of S278 Works within public footway



SECTION B-B
SHOWING ADOPTED FOOTWAY/VEHICLE CROSSOVER
CONSTRUCTION DETAIL

SCALE 1:20



B	Updated following consultation with CC Highways & TA	16/01/24	TM	TM	TM
A	Minor amendments at kerb tie-in at northern/southern extent	08/09/23	TM	TM	TM
Rev	Description	Date	Revised by	Checked by	Approved

Issue Purpose: APPROVAL

Do not scale from this drawing

R G PARKINS
Kendal | 01539 729393 | Lancaster | 01524 32548

Client: Thomas Armstrong Ltd

Project: Fell View Ave

Drawing Title: S278 Works to Existing Footway / Highway

Scale @ A1: 1:500

First Issue: 26/05/23

Office of Origin: Kendal

Drawn by: CA

Checked by: TM

Approved: TM

Project No: K39225

Drawing No: 171

Rev: B

BIM No: