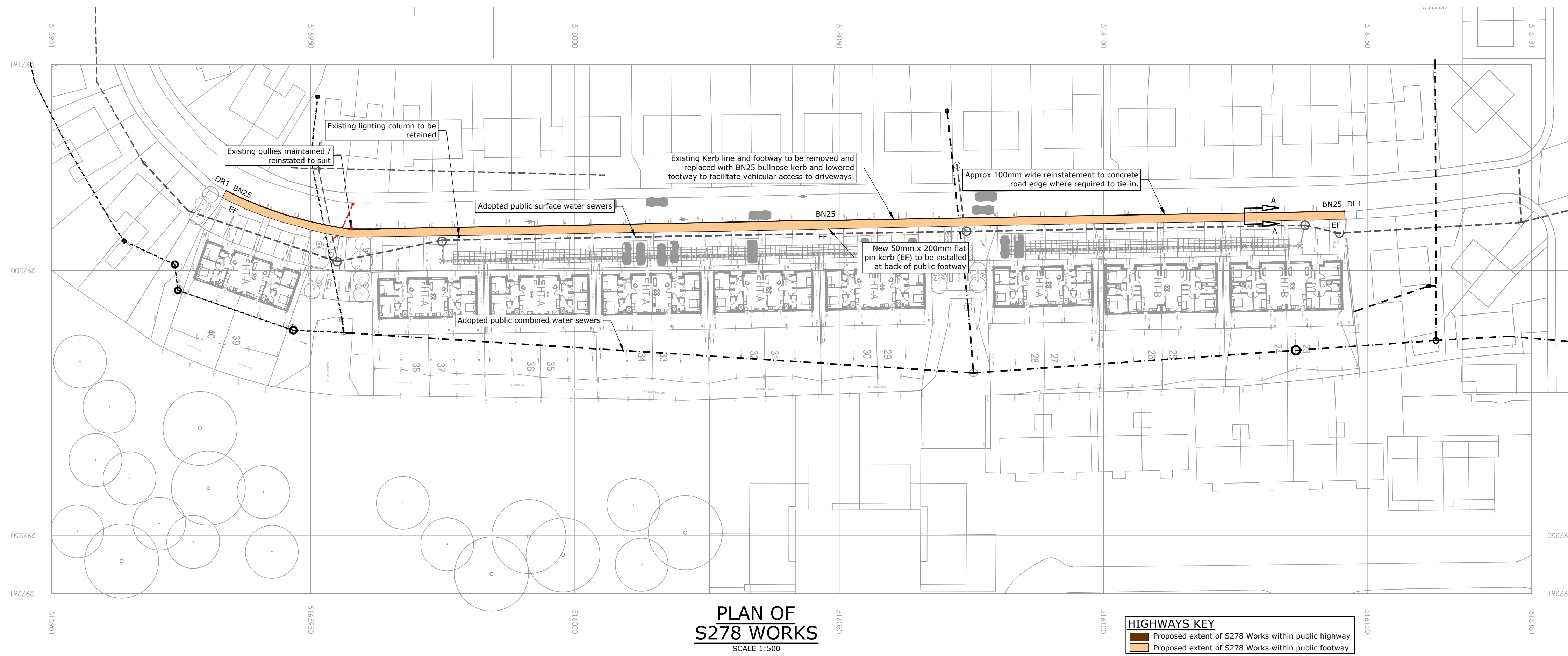
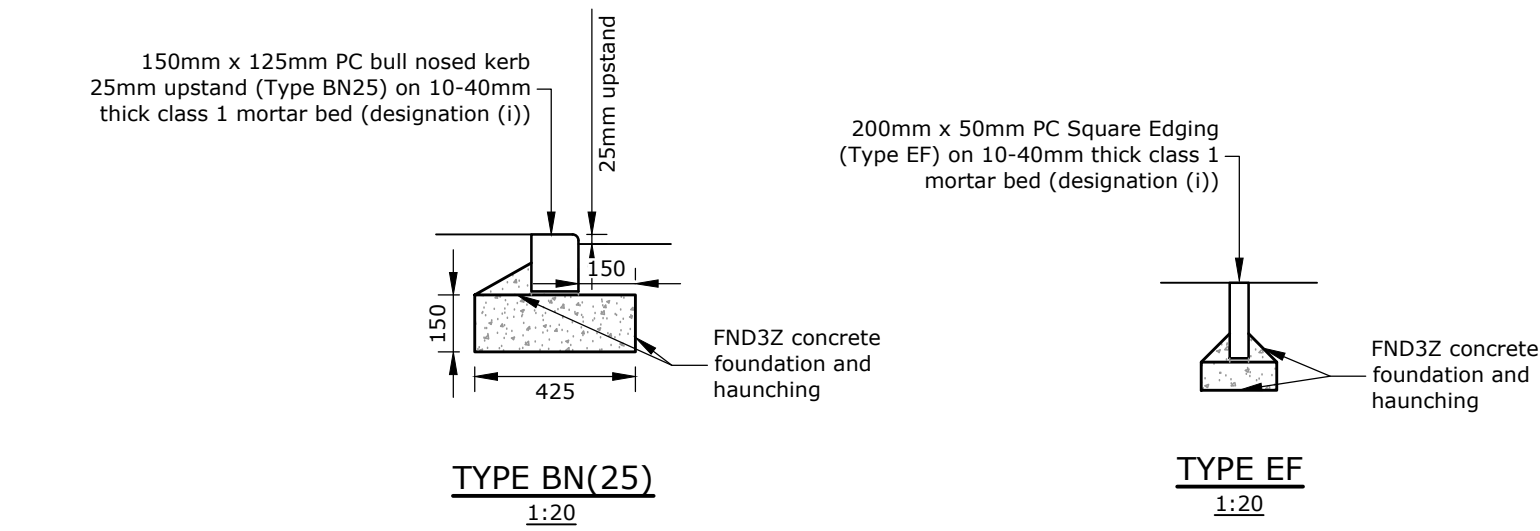


**TYPICAL SECTION (A-A)**  
**SHOWING ADOPTED FOOTWAY/VEHICLE CROSSOVER**  
**CONSTRUCTION DETAIL**  
SCALE 1:20



Rev	Description	Date	Revised by	Checked by	Approved
Issue Purpose: APPROVAL					
Do not scale from this drawing					

**R G PARKINS**  
Kendal | 01539 729393 Lancaster | 01524 32548

Client: Thomas Armstrong Ltd  
Project: Windermere Road  
Drawing Title: S278 Works to Existing Footway/Highway

Scale @ A1: 1:200	First Issue: 26/05/23	Office of Origin: Kendal
Drawn by: CA	Checked by: TM	Approved: TM
Project No: K39225	Drawing No: 170	Rev:
BIM No:		