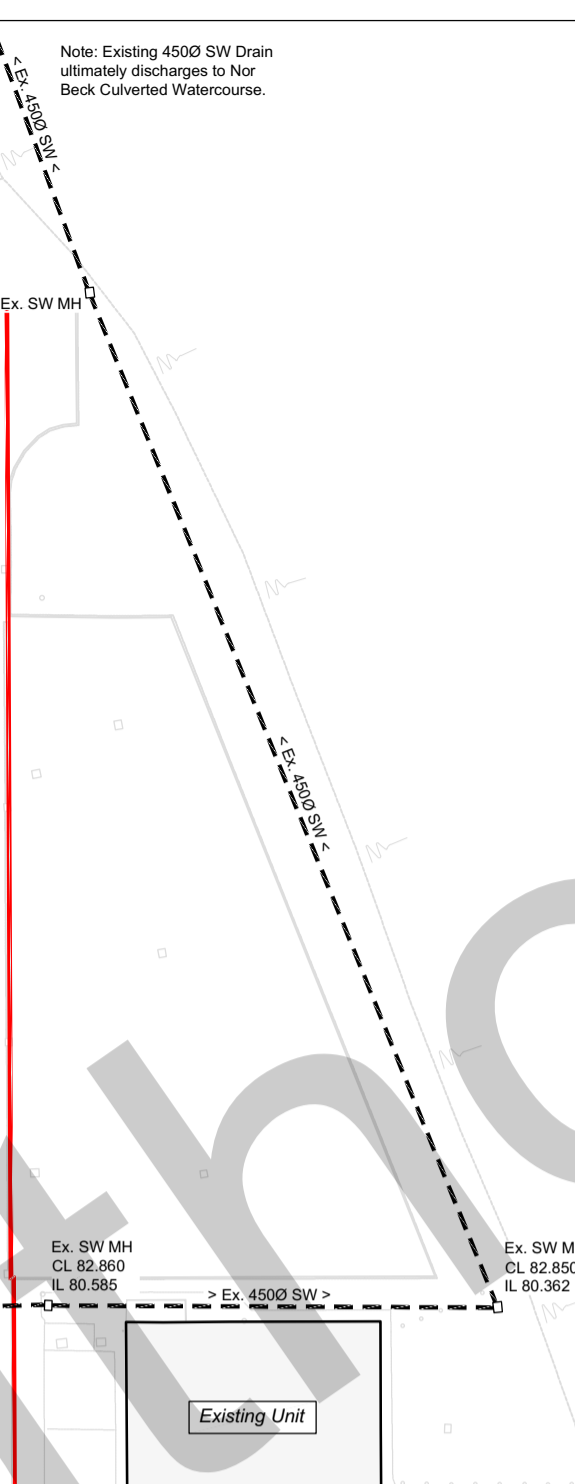
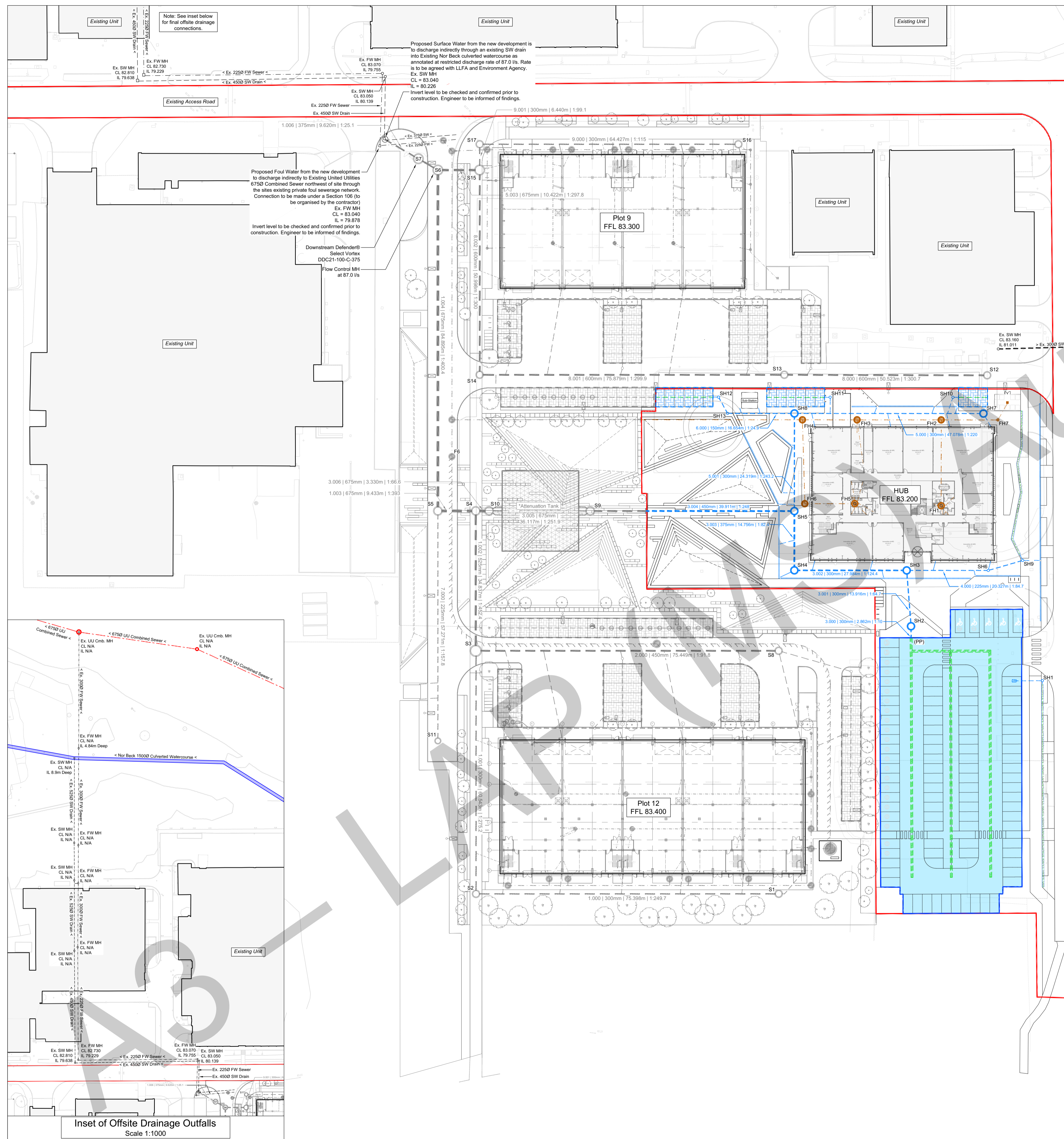


- DO NOT SCALE -



**Legend**

- Proposed SW Drain
- Proposed FW Sewer
- Nor Beck (Culverted)
- Existing SW Drain
- Existing FW Sewer
- Existing UU Combined Sewer
- Site Boundary
- Linear Drain w/ Silt Trap
- Existing Attenuation Tank
- Permeable Paved Paving with perf. pipe (Tanked)
- Extent of 4/20 Sub-base Attenuation (Car Parking)

**Note**  
 This drawing is to be read in conjunction with BGP SuDS Management and Maintenance document reference: ISH-BGP-19-XX-T-C-0003 current revision for Management and Maintenance requirements of elements not included within tables on the drawing.

**Maintenance Requirements**

**FW Sewers and Manholes**  
 To be managed by the contractor until end of defect period. Client appointed private management company to maintain thereafter

Maintenance Schedule	Required Action	Frequency
Regular Maintenance	Inspect and identify any areas that are not operating correctly. If required take remedial action.	Monthly for 3 months then annually.
Occasional Maintenance	Survey inside of outlet pipes to check for sediment build up and remove if necessary.	Every 5 years or as required.
Remedial Actions	Repair physical damage if necessary.	As Required.

**SW Drains and Manholes**  
 To be managed by the contractor until end of defect period. Client appointed private management company to maintain thereafter

Maintenance Schedule	Required Action	Frequency
Regular Maintenance	Inspect and identify any areas that are not operating correctly. If required take remedial action.	Monthly for 3 months then annually.
Occasional Maintenance	Survey inside of outlet pipes to check for sediment build up and remove if necessary.	Every 5 years or as required.
Remedial Actions	Repair physical damage if necessary.	As Required.

**Gullies / Linear Drains**  
 To be managed by the contractor until end of defect period. Client appointed private management company to maintain thereafter

Maintenance Schedule	Required Action	Frequency
Regular Maintenance	Inspect for ponding on road channel, may be caused by obstruction within gully. Remove by rodding/setting from access point.	Monthly for 3 months then annually.
Occasional Maintenance	Survey inside of outlet pipes to check for sediment build up and remove if necessary.	Annually or as required.
Remedial Actions	Repair physical damage if necessary.	Every 5 years or as required.
Remedial Actions	Repair physical damage if necessary.	As Required.

**Permeable Car Parking**  
 To be managed by the contractor until end of defect period. Client appointed private management company to maintain thereafter

Maintenance Schedule	Required Action	Frequency
Regular Maintenance	Brushing and Vacuuming (standard cosmetic sweep over whole surface).	Yearly, ideally after autumn leaf fall.
Occasional Maintenance	Stabilize and mow contributing and adjacent areas.	As required.
Occasional Maintenance	Removal/management of weeds using glyphosate applied directly into the weeds by an applicator rather than spraying.	As required, once per year on infrequently used pavements.
Remedial Actions	Remediate any landscaping which has been raised to within 50mm of the level of the paving.	As Required.
Remedial Actions	Remedial work to any depressions, rutting and cracked/broken blocks considered detrimental to the structural performance or a hazard to users and replace lost jointing material.	As Required.
Remedial Actions	Rehabilitation of surface and upper substructure by remedial sweeping.	Every 10-15 years or as required.

NOT FOR PRICING

NOT FOR CONSTRUCTION

Stage 3 Issue	JN	P02	JJH	11.04.2026
Stage 3 Issue	JN	P01	JJH	17.03.2026
AMENDMENT	BY	REV	CHK	DATE



CIVIL & STRUCTURAL ENGINEERS | BUILDING SURVEYORS  
[www.bgp-consulting.co.uk](http://www.bgp-consulting.co.uk)

TEESSIDE: T: 01642 876470 | TYNESIDE: T: 0191 495 4100

<b>Client</b>	Cumberland Council												
<b>Project</b>	ISH Hub												
<b>BGP Project No.</b>	21T2034												
<b>Drawing Title</b>	SuDS Maintenance Plan												
<b>Drawn</b>	JN	<b>Date</b>	MAR '26	<b>Checked</b>	JJH	<b>Date</b>	MAR '26	<b>Size</b>	A1	<b>Scale</b>	1:500	<b>Rev.</b>	P02
<b>Location</b>	ISH	<b>Originator</b>	BGP	<b>Volume</b>	19	<b>Level</b>	XX	<b>Form</b>	D	<b>Role</b>	C	<b>Unique No.</b>	19150
<b>File Reference</b>	ISH-BGP-19-XX-D-C-19150												

In instances where this drawing completes or partly completes a contract, BGP Consulting Limited will consider that its product has been validated, unless in a period not exceeding 90 working days, the client advises to the contrary.

Inset of Offsite Drainage Outfalls  
 Scale 1:1000