

0 10 100
Millimetres

DO NOT SCALE

SAFETY, HEALTH AND ENVIRONMENTAL INFORMATION

In addition to the hazards/risks normally associated with the types of work detailed on this drawing, note the following:

CONSTRUCTION

N/A

MAINTENANCE/CLEANING

N/A

DECOMMISSIONING/DEMOLITION

N/A

It is assumed that all works will be carried out by a competent contractor working, where appropriate, to an approved method statement

PLANT SCHEDULES:

RE3 River floodplain/water meadow (approx. 410m²)
Mix RE3 by Germinal Seeds or similar

Common Name	Botanical Name	% Mix	Sowing Rate
AUTUMN HAWKBIT	(Leontodon Autumnalis)	0.30%	
COMMON KNAPWEED	(Centaurea nigra)	2.20%	
COMMON MOUSE-EAR	(Cerastium fontanum)	0.10%	
CREeping BENT	(Agrostis stolonifera)	2.50%	
CREeping BUTTERCUP	(Ranunculus repens)	2.00%	
CREsted DOGSTAIL	(Cynosurus Cristatus)	20.00%	
MARSH MARI GOLD	(Caltha palustris)	0.20%	
MEADOW FESCUE	(Festuca pratensis)	10.00%	
MEADOW SWEET	(Filipendula ulmaria)	1.00%	
OXEYE DAISY	(Leucanthemum vulgare)	3.50%	
RAGGED ROBIN	(Lychnis flos cuculi)	0.30%	
RED CLOVER	(Trifolium pratense)	1.00%	
RIBWORT PLANTAIN	(Plantago lanceolata)	4.00%	5g/m ²
ROUGH HAWKSBIT	(Leontodon hispidus)	2.00%	
RIBWORT PLANTAIN	(Plantago lanceolata)	3.00%	
ROUGH HAWKSBIT	(Leontodon hispidus)	0.10%	
ROUGH STALKED MEADOW GRASS	(Poa trivialis)	10.00%	
SELF HEAL	(Prunella vulgaris)	2.50%	
SLENDER CREEPING RED FESCUE	(Festuca rubra litoralis)	25.00%	
SWEET VERNAL GRASS	(Anthoxanthum odoratum)	2.50%	
TENO	(Phleum bertolonii)	5.00%	
WHITE CLOVER	(Trifolium repens)	2.00%	
YELLOW RATTLE	(Rhinanthus minor)	0.80%	
YORKSHIRE FOG	(Holcus lanatus)	5.00%	

Dry Woodland Mix 3 (approx. 2889m²)

Botanical Name	Common Name	% Mix	Spacing/centres in metres	Form/Habit	Age / Condition or Number of Times Transplanted	Overall Minimum Height in cm	Root Condition: B=Bagged/ Bare Root; RB=Rootball; C= Container in litres	Planting groups	Number
TREES									
Acer campestre	Field Maple	5%	2	Feathered - 3 breaks	2x	125-150	B	5-9	36
Betula pendula	Silver Birch	5%	2.5	Feathered	2x	175-200	B	5-9	23
Quercus robur	Common Oak	5%	2.5	Transplant - branched 3 breaks	2x	60-80	B	5-9	23
Sorbus aucuparia	Rowan	5%	2	Feathered - 3 breaks	2x	125-150	B	5-9	36
SHRUBS									
Corylus avellana	Hazel	50%	1.5	Transplant - branched 3 breaks	1+2	60-80	B	5-9	650
Crataegus monogyna	Hawthorn	20%	1.5	Transplant - branched 3 breaks	1+1	60-80	B	5-25	260
Prunus spinosa	Blackthorn	5%	2	Transplant - branched 3 breaks	1+1	60-80	B	5-9	65
Sambucus nigra	Elder	5%	1.5	Transplant - branched 3 breaks	1+1	60-80	B	5-9	65

Wet Woodland Mix 1 (approx. 332m²)

Botanical Name	Common Name	% Mix	Spacing/centres in metres	Form/Habit	Overall Minimum Height in cm	Root Condition: B=Bagged/ Bare Root; RB=Rootball; C= Container in litres	Planting groups	Number	
TREES									
Alnus glutinosa	Alder	20%	2.5	Feathered	2x	175-200	B	5-9	13
Betula pendula	Silver Birch	5%	2	Feathered	2x	175-200	B	5-9	5
Betula pubescens	Downy Birch	5%	2	Transplant	1+1		B	5-9	5
SHRUBS									
Cornus sanguinea	Common Dogwood	20%	1.5	Transplant	1+2	60-80	B	5-9	37
Corylus avellana	Hazel	20%	1.5	Transplant	1+1	40-60	B	5-9	37
Salix caprea	Goat Willow	10%	2	Transplant	0/2	125-150	B	5-9	10
Salix cinerea	Grey Willow	10%	2	Transplant	0/2	125-150	B	5-9	10
Sambucus nigra	Elder	10%	1.5	Transplant	1+0	40-60	B	5-9	18

Bulb Underplanting to Dry Woodland Areas (approx. 3057m²)

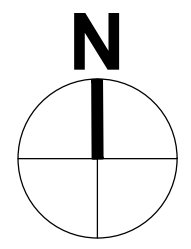
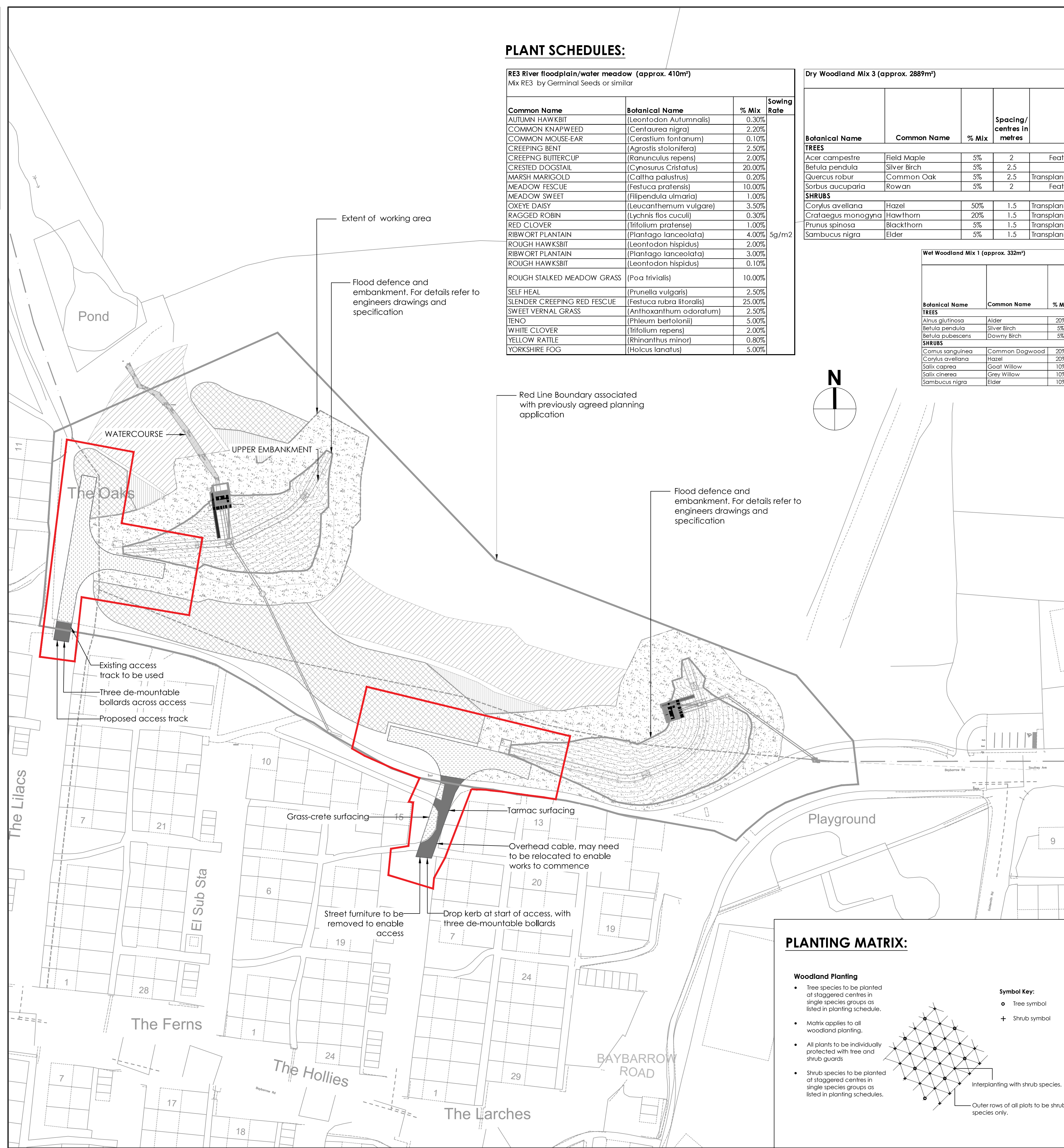
Botanical Name	Common Name	Sowing Rate	Depth Generally	Depth where cultivation disturbance possible	Grade/Circumference (cm)
Hyacinthoides non-scriptus	Bluebell	177/m ²	50-75mm	150mm	6+

Agricultural Grass Reinstatement Mix (approx. 4255 m²)
Mix RE1 (Traditional Hay Meadow - MGS Grassland) by Germinal Seeds or similar

Common Name	Botanical Name	% Mix	Sowing Rate
AGRIMONY	(Agrimonia eupatoria)	0.50%	
AUTUMN HAWKBIT	(Leontodon autumnalis)	0.20%	
BIRDSFOOT TREFOIL	(Lotus corniculatus)	0.50%	
BROWNTOP BENT	(Agrostis capillaris)	2.50%	
BULBOUS BUTTERCUP	(Ranunculus bulbosus)	0.50%	
COMMON KNAPWEED	(Centaurea nigra)	2.50%	
CREsted DOGSTAIL	(Cynosurus Cristatus)	25.00%	
GOLDEN OAT GRASS	(Trisetum flavescens)	5.00%	
LADY'S BEDSTRAW	(Galium verum)	1.60%	
MEADOW BUTTERCUP	(Ranunculus acris)	1.50%	
MEADOW FESCUE	(Festuca pratensis)	5.00%	
MEADOW SWEET	(Filipendula ulmaria)	1.00%	
OXEYE DAISY	(Leucanthemum vulgare)	1.00%	
RED CLOVER	(Trifolium pratense)	2.00%	
RIBWORT PLANTAIN	(Plantago lanceolata)	3.00%	
ROUGH HAWKSBIT	(Leontodon hispidus)	0.20%	
SALAD BURNET	(Sanguisorba minor)	1.00%	
SELF HEAL	(Prunella vulgaris)	1.00%	
SHEEPS FESCUE	(Festuca ovina)	6.50%	
SLENDER CREEPING RED FESCUE	(Festuca rubra litoralis)	30.00%	
SWEET VERNAL GRASS	(Anthoxanthum odoratum)	1.00%	
TENO	(Phleum bertolonii)	5.00%	
WHITE CLOVER	(Trifolium repens)	2.00%	
YARROW	(Achillea millefolium)	1.00%	
YELLOW RATTLE	(Rhinanthus minor)	0.50%	

A3 Embankments and Droughts (approx. 2670m²)
Mix A3 by Germinal Seeds or similar

Common Name	Botanical Name	% Mix	Sowing Rate
CORAIL STRONG CREEPING RED FESCUE	(Festuca rubra rubra)	30.00%	
ZURICH CREEPING PERENNIAL RYEGRASS	(Lolium Perenne)	30.00%	
ESSENTIAL TALL FESCUE	(Festuca arundinacea)	25.00%	50g/m ²
ABERFLEECÉ SHEEPS FESCUE	(Festuca ovina)	10.00%	
HIGHLAND BROWNTOP BENTGRASS	(Agrostis castellana)	5.00%	



PLANTING MATRIX:

Woodland Planting

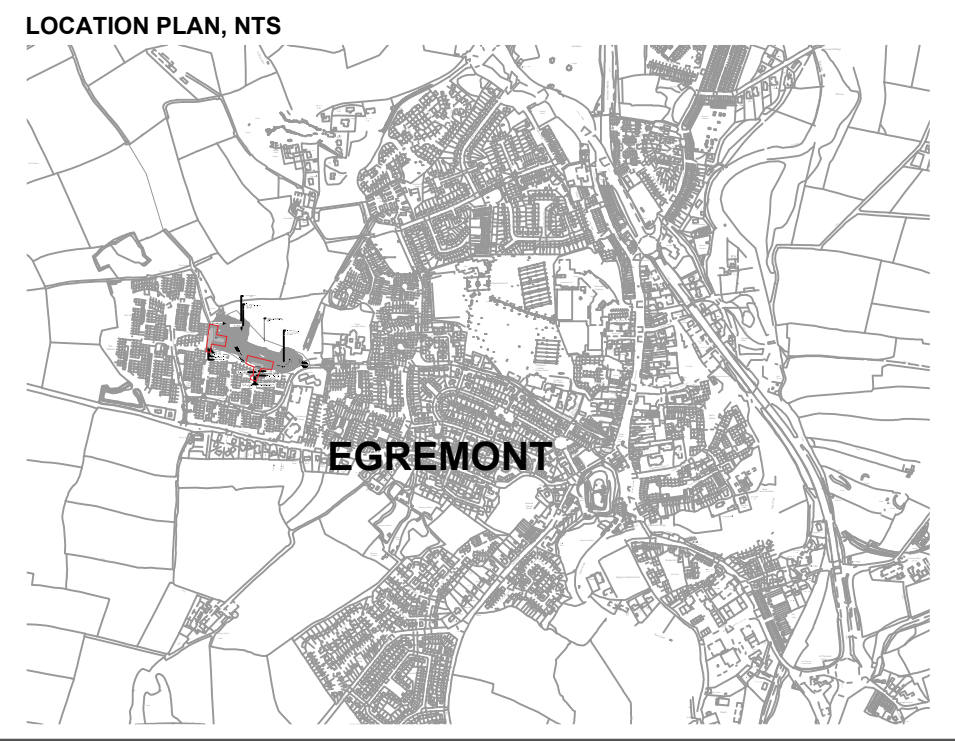
- Tree species to be planted at staggered centres in single species groups as listed in planting schedule.
- Matrix applies to all woodland planting.
- All plants to be individually protected with tree and shrub guards.
- Shrub species to be planted at staggered centres in single species groups as listed in planting schedules.

Symbol Key:

- Tree symbol
- + Shrub symbol

Interplanting with shrub species. Outer rows of all plots to be shrub species only.

- NOTES:**
- DO NOT SCALE FROM THIS DRAWING.
 - ALL DIMENSIONS ARE IN MILLIMETRES UNLESS STATED OTHERWISE.
 - ALL LEVELS ARE IN MAOD UNLESS STATED OTHERWISE.
 - TO BE READ IN CONJUNCTION WITH ENGINEERS DRAWINGS.
 - LANDSCAPE PROPOSALS BASED ON PREVIOUS APPROVED PLANNING APPLICATION (NO. PO4.1) MATERIAL AMENDMENT TO ACCESS



Key:

- Existing Public Rights of Way
- Extinguished Public Rights of Way
- Proposed Attenuation Embankment
- Working Areas Extent 10m offset from bottom of embankment
- Proposed Stock Proof Fence 4m offset from bottom of slope. To match and tie into existing fence on site
- Extended Red Line Boundary
- Grass-crete
- Tarmac Surface Footway
- Existing Vegetation to be Retained and Protected During Construction in Accordance with BS5857:2012
- Proposed Dry Woodland Mix 3 (approx. 2889m²) All woodland areas to be underpinned with Agricultural Grass Reinstatement Mix RE1. Grass areas to be protected until established. Rabbit guards to be installed to protect plants. For planting specification see Plant Schedule opposite.
- Proposed Wet Woodland Mix 1 (approx. 332m²) To be underpinned with Wet Grassland Mix RE3. Grass areas to be protected until established. Rabbit guards to be installed to protect plants. For planting specification see Plant Schedule opposite.
- Proposed Agricultural Grass Reinstatement Mix - Hay Meadow RE1 (by Germinal or similar) For planting specification see Plant Schedule opposite. Area to be protected until established
- Proposed Embankments and Drought Mix A3 (by Germinal or similar). For planting specification see Plant Schedule opposite. Area to be protected until established
- Proposed levels

C01	20/04/22	FOR PLANNING APPROVAL	SN	CH	SB
Rev.	Date	Description	By	Chk'd	App'd

APPROVED - PUBLISHED A1

VBA Joint Venture Limited
Chadwick House
Birchwood Park
Warrington
WA3 6AE
Tel: +44 (0)1925 238000
Fax: +44 (0)1925 238500

Copyright © VBA Joint Venture Limited (2019)

Environment Agency

Project Title
SKIRTING AND WHANGS BECK FRMS 5166264

Drawing Title
SKIRTING AND WHANGS BECK FRMS WHANGS BECK ACCESS TRACK LANDSCAPE MASTERPLAN

Scale	Drawn	Checked	Reviewed	Authorised
N/A	SN	CH	SB	MK
Original Size	Date	Date	Date	Date
A1	08/03/22	09/03/22	16/03/22	20/04/22
Drawing Number	Revision			
IMNW000818-VBA-LL-3T3-DR-L-0001				C01