

IRONWORKS DEVELOPMENT
MASTERPLAN

- 1. OCTAGON
- 2. MILLWAY
- 3. ANCILLARY 1
Kitchen / AWC
- 4. ANCILLARY 2
Communal gathering space
- 5. ORGANS 1-5
5 no. Sculptural 'Organs'
(Lungs / Liver / Heart / Spleen / Kidney)
- 6. WOMB / TRIPLE BURNER
2 no. 2 pax. accessible experiential accommodation units
- 7. A.RES 1 & A.RES 2
2 no. 2 person accessible accommodation units
- 8. RES 1-4
4 no. 2 person accommodation units
- 9. ROT 1-5
5 no. 2 person accommodation units by Rotunda
- 10. AS
12 no. renovated Airstream units
Variable capacity (max 4 / min 2)
- 11. V
4 no. renovated Vardo wagons
Variable capacity (max 4 / min 1)
- 12. Warehouse

IDK

NOTES

All Dimensions are from structure to structure unless indicated otherwise.

Elements of structure and services are indicated for coordination purposes. For full structural and services layouts refer to Structural and Services Engineers' drawings.

Do not scale directly from drawing. All dimensions to be checked on site prior to construction or fabrication of any elements.

Any discrepancies between figured dimensions to be reported to architect for clarification prior to commencing work.

© Copyright Reserved

Rev	Date	Comments
P	200405	Issued for Planning
P(A)	200505	Planning validation

Project CODE:	IRN
Project:	Ironworks Retreat
Drawing title:	SITE Masterplan
Scale:	1:1000 @ A1
Origination Date:	200227
Status:	Planning
Drawing No.:	IDK-IRN-P-00-10-02
Rev	P(A)



IRONWORKS DEVELOPMENT
MASTERPLAN

- 1. OCTAGON
- 2. MILLWAY
- 3. ANCILLARY 1
Kitchen / AWC
- 4. ANCILLARY 2
Communal gathering space
- 5. ORGANS 1-5
5 no. Sculptural 'Organs'
(Lungs / Liver / Heart / Spleen / Kidney)
- 6. WOMB / TRIPLE BURNER
2 no. 2 pax. accessible experiential accommodation units
- 7. A.RES 1 & A.RES 2
2 no. 2 person accessible accommodation units
- 8. RES 1-4
4 no. 2 person accommodation units
- 9. ROT 1-5
5 no. 2 person accommodation units by Rotunda
- 10. AS
12 no. renovated Airstream units
Variable capacity (max 4 / min 2)
- 11. V
4 no. renovated Vardo wagons
Variable capacity (max 4 / min 1)
- 12. Warehouse

For Accomodation / Residences &
Organs refer to IDK-RES-A

NOTES

All Dimensions are from structure to structure unless indicated otherwise.

Elements of structure and services are indicated for coordination purposes. For full structural and services layouts refer to Structural and Services Engineers' drawings.

Do not scale directly from drawing. All dimension to be checked on site prior to construction or fabrication of any elements.

Any discrepancies between figured dimensions to be reported to architect for clarification prior to commencing work.

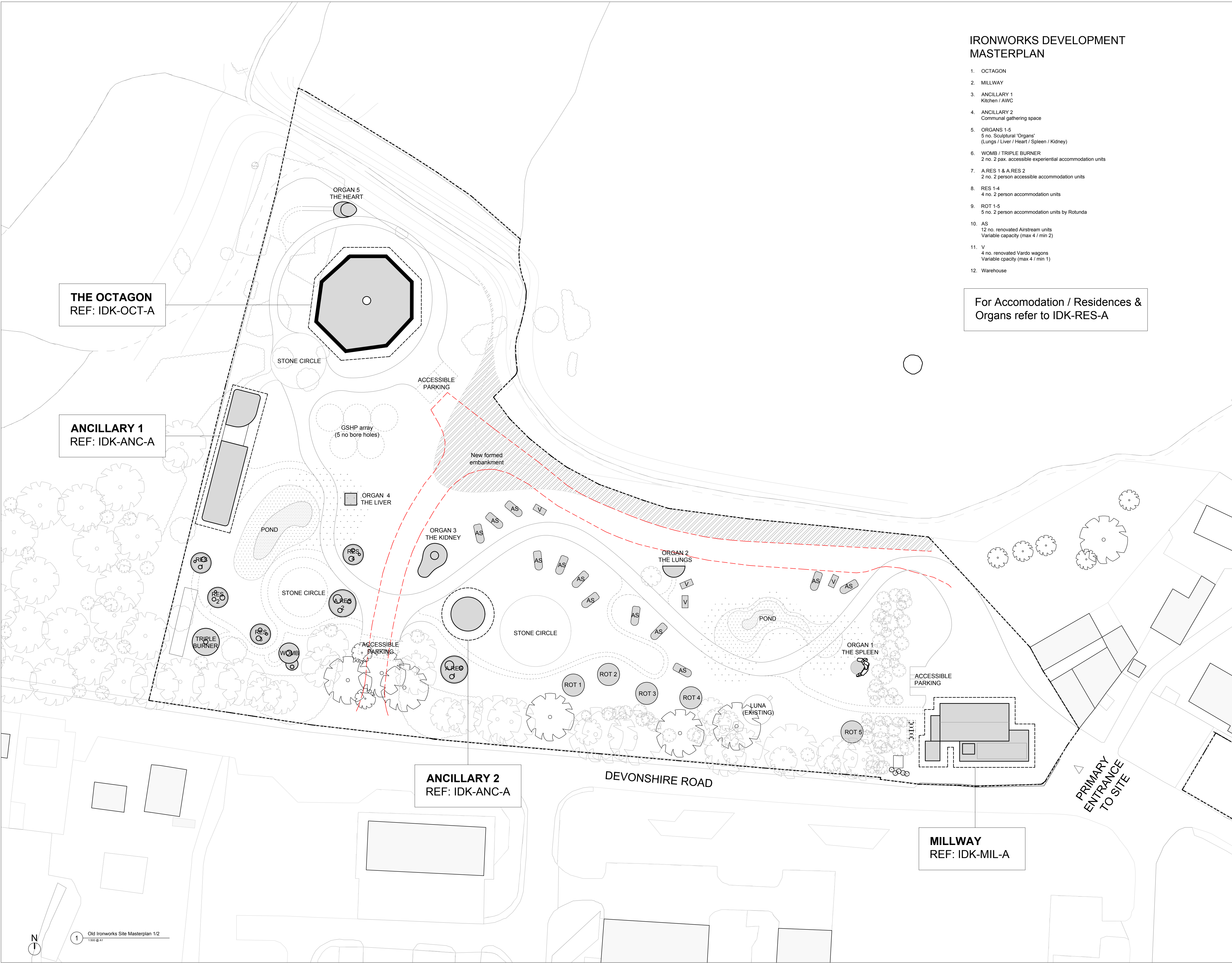
© Copyright Reserved

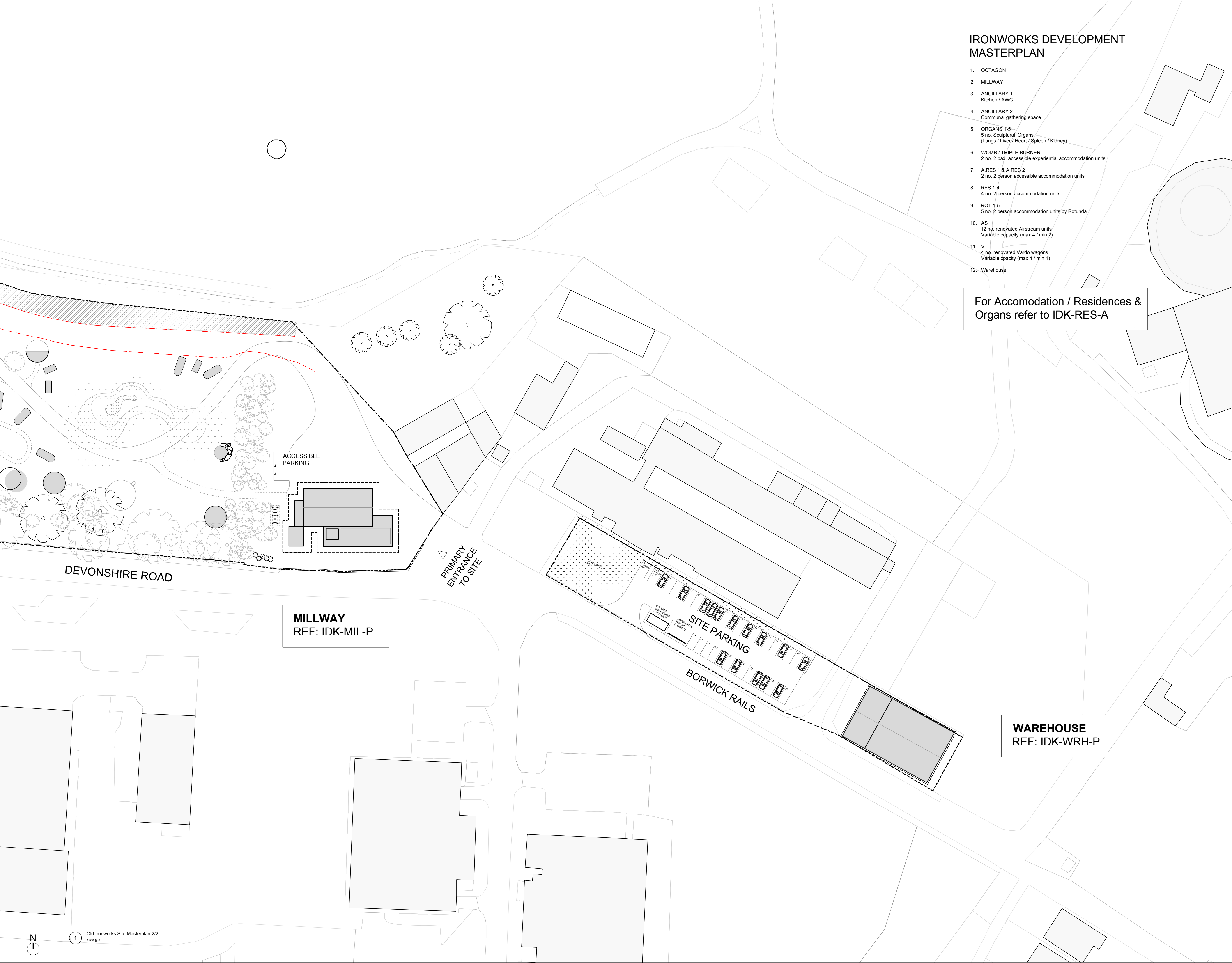
Rev Date Comments

P 200405
Issued for Planning

P(A) 200505
Planning validation

Project CODE:	IRN
Project:	Ironworks Retreat
Drawing title:	SITE Masterplan 1/2
Scale:	1:500 @ A1
Origination Date:	200227
Status:	Planning
Drawing No :	IDK-IRN-P-00-10-03
Rev	P(A)





IRONWORKS DEVELOPMENT
MASTERPLAN

- 1. OCTAGON
- 2. MILLWAY
- 3. ANCILLARY 1
Kitchen / AWC
- 4. ANCILLARY 2
Communal gathering space
- 5. ORGANS 1-5
5 no. Sculptural 'Organs'
(Lungs / Liver / Heart / Spleen / Kidney)
- 6. WOMB / TRIPLE BURNER
2 no. 2 pax. accessible experiential accommodation units
- 7. A.RES 1 & A.RES 2
2 no. 2 person accessible accommodation units
- 8. RES 1-4
4 no. 2 person accommodation units
- 9. ROT 1-5
5 no. 2 person accommodation units by Rotunda
- 10. AS
12 no. renovated Airstream units
Variable capacity (max 4 / min 2)
- 11. V
4 no. renovated Vardo wagons
Variable capacity (max 4 / min 1)
- 12. Warehouse

For Accomodation / Residences &
Organs refer to IDK-RES-A

MILLWAY
REF: IDK-MIL-P

WAREHOUSE
REF: IDK-WRH-P

IDK

NOTES
All Dimensions are from structure to structure unless indicated otherwise.
Elements of structure and services are indicated for coordination purposes. For full
structural and services layouts refer to Structural and Services Engineers' drawings.
Do not scale directly from drawing. All dimension to be checked on site prior to
construction or fabrication of any elements.
Any discrepancies between figured dimensions to be reported to architect for
clarification prior to commencing work.
© Copyright Reserved

Rev	Date	Comments
P	200405	Issued for Planning
P(A)	200427	Planning validation

Project CODE:	IRN
Project:	Ironworks Retreat
Drawing title:	SITE Masterplan 2/2
Scale:	1:500 @ A1
Origination Date:	200227
Status:	Planning
Drawing No.:	IDK-IRN-P-00-10-04
Rev	P(A)

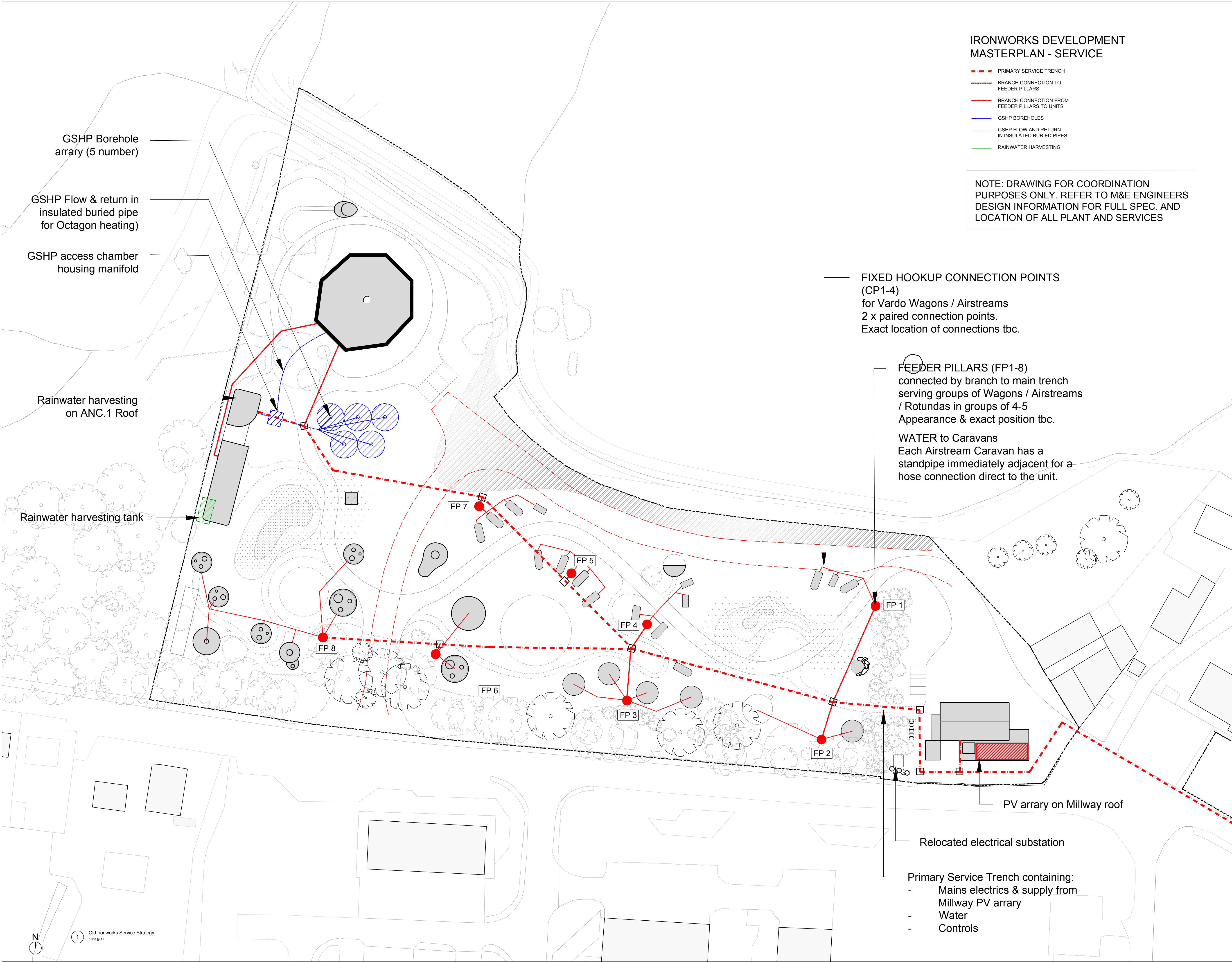
IRONWORKS DEVELOPMENT
MASTERPLAN - SERVICE

- PRIMARY SERVICE TRENCH
- BRANCH CONNECTION TO FEEDER PILLARS
- BRANCH CONNECTION FROM FEEDER PILLARS TO UNITS
- GSHP BOREHOLES
- GSHP FLOW AND RETURN IN INSULATED BURIED PIPES
- RAINWATER HARVESTING

NOTE: DRAWING FOR COORDINATION PURPOSES ONLY. REFER TO M&E ENGINEERS DESIGN INFORMATION FOR FULL SPEC. AND LOCATION OF ALL PLANT AND SERVICES

NOTES
All Dimensions are from structure to structure unless indicated otherwise.
Elements of structure and services are indicated for coordination purposes. For full structural and services layouts refer to Structural and Services Engineers' drawings.
Do not scale directly from drawing. All dimensions to be checked on site prior to construction or fabrication of any elements.
Any discrepancies between figured dimensions to be reported to architect for clarification prior to commencing work.
© Copyright Reserved

Rev	Date	Comments
P	200405	Issued for Planning
P(A)	200505	Planning validation



Project CODE:	IRN
Project:	Ironworks Retreat
Drawing title:	SITE Services
Scale:	1:500 @ A1
Origination Date:	200227
Status:	Planning
Drawing No :	IDK-IRN-P-00-20-01
Rev	P(A)

Dimensions are from structure to structure unless indicated otherwise.

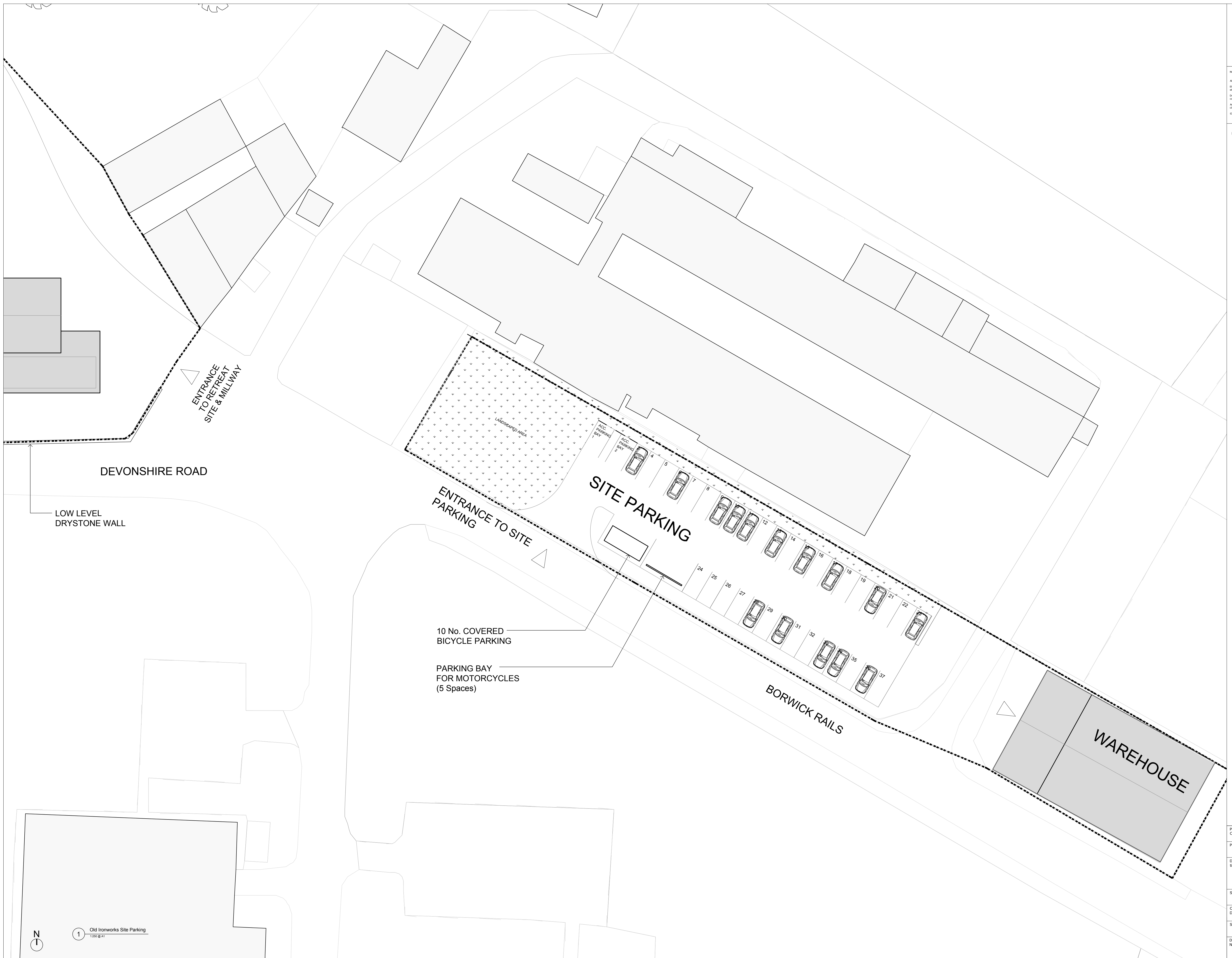
Elements of structure and services are indicated for coordination purposes. For full structural and services layouts refer to Structural and Services Engineers' drawings.

Do not scale directly from drawing. All dimension to be checked on site prior to construction or fabrication of any elements.

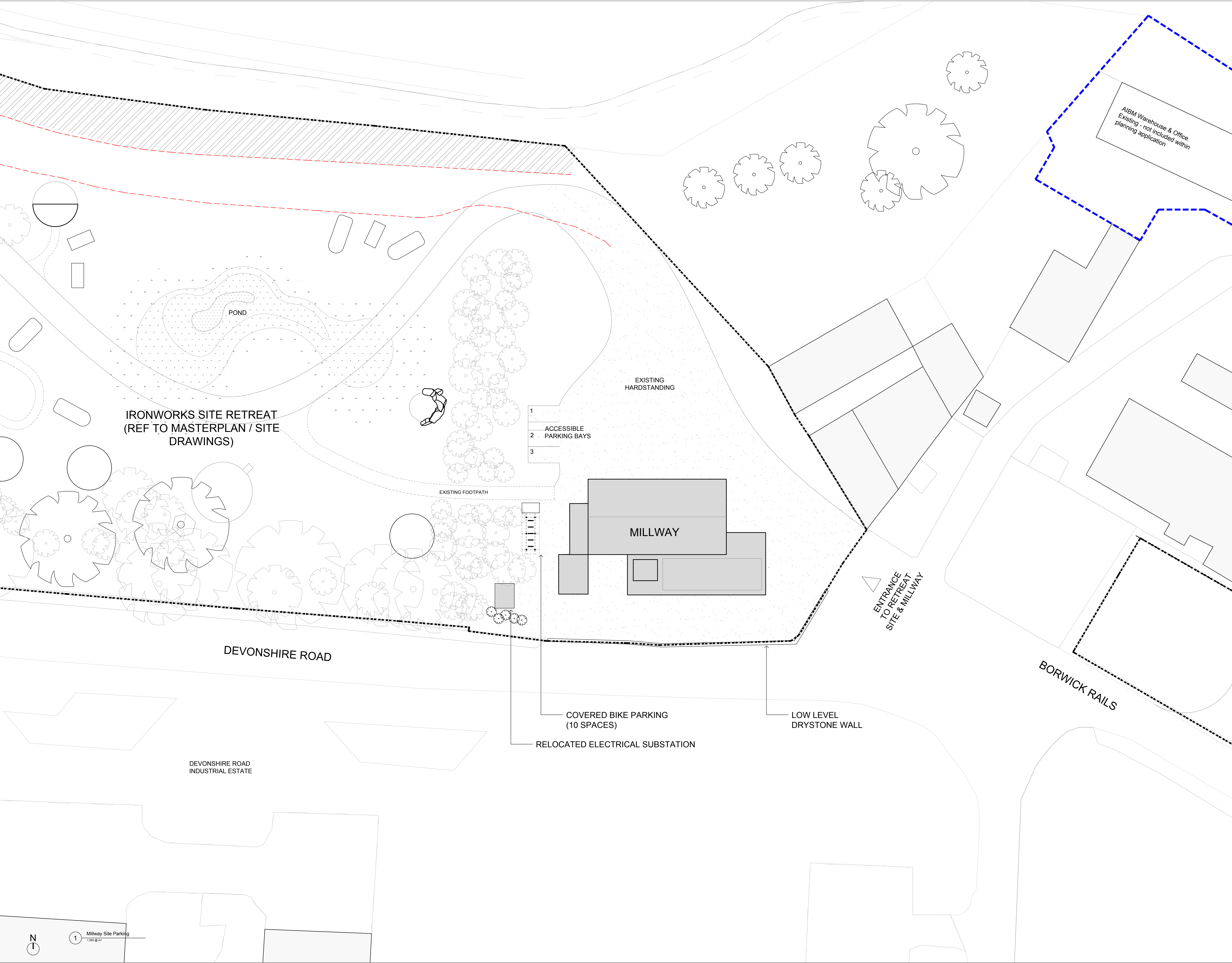
Any discrepancies between figured dimensions to be reported to architect for verification prior to commencing work.

Copyright Reserved

Rev	Date	Comments
P	200405	Issued for Planning
P(A)	200505	Planning validation



Project Code:	IRN	
Project:	Ironworks Retreat	
Drawing Title:	SITE Site Parking	
Scale:	1:250 @ A1	
Origination Date:	200227	
Status:	Planning	
Drawing ID:	IDK-IRN-P-00-30-01	Rev P(A)



NOTES
All Dimensions are from structure to structure unless indicated otherwise.
Elements of structure and services are indicated for coordination purposes. For full structural and services layouts refer to Structural and Services Engineers' drawings.
Do not scale directly from drawing. All dimensions to be checked on site prior to construction or fabrication of any elements.
Any discrepancies between figured dimensions to be reported to architect for clarification prior to commencing work.
© Copyright Reserved

Rev	Date	Comments
P	200505	Planning validation

Project CODE:	IRN
Project:	Ironworks Retreat
Drawing title:	SITE Millway Parking
Scale:	1:250 @ A1
Origination Date:	200227
Status:	Planning
Drawing No :	IDK-IRN-P-00-30-02
Rev	P