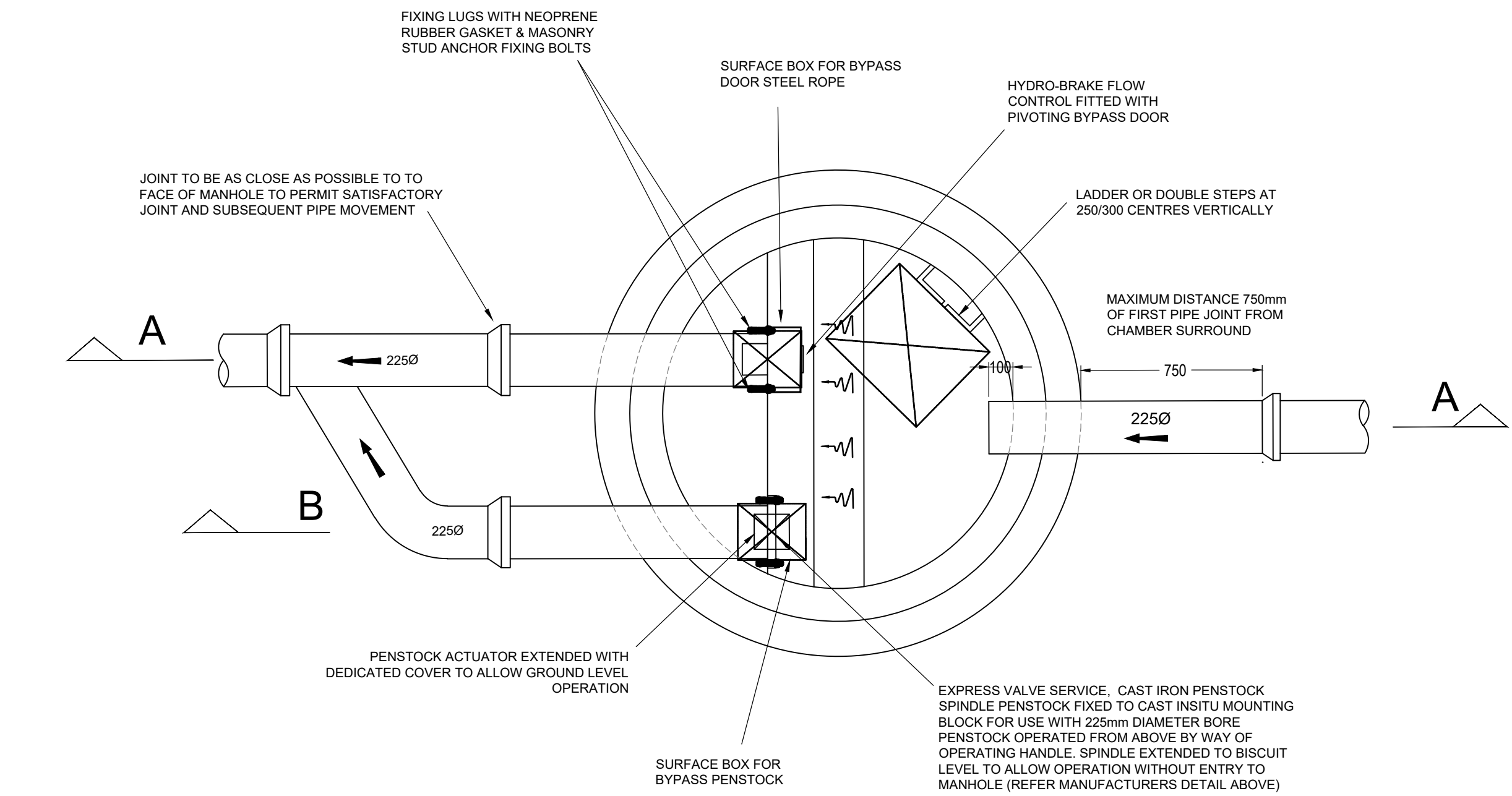


PLAN

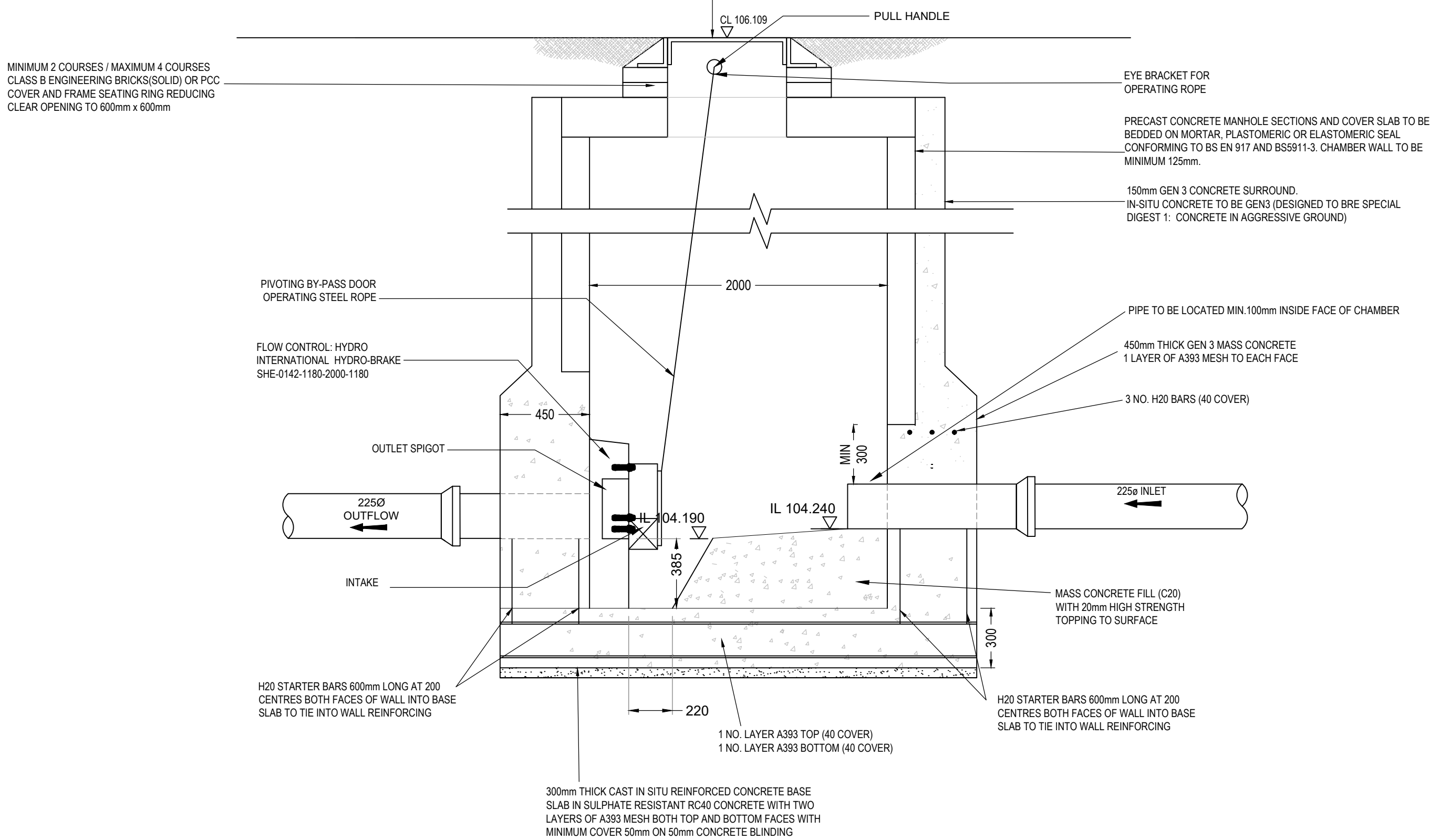


NOMINAL SIZE	EFFECTIVE LENGTH (mm)
150 TO 600	600
675 TO 675	1000
825 AND ABOVE	1250

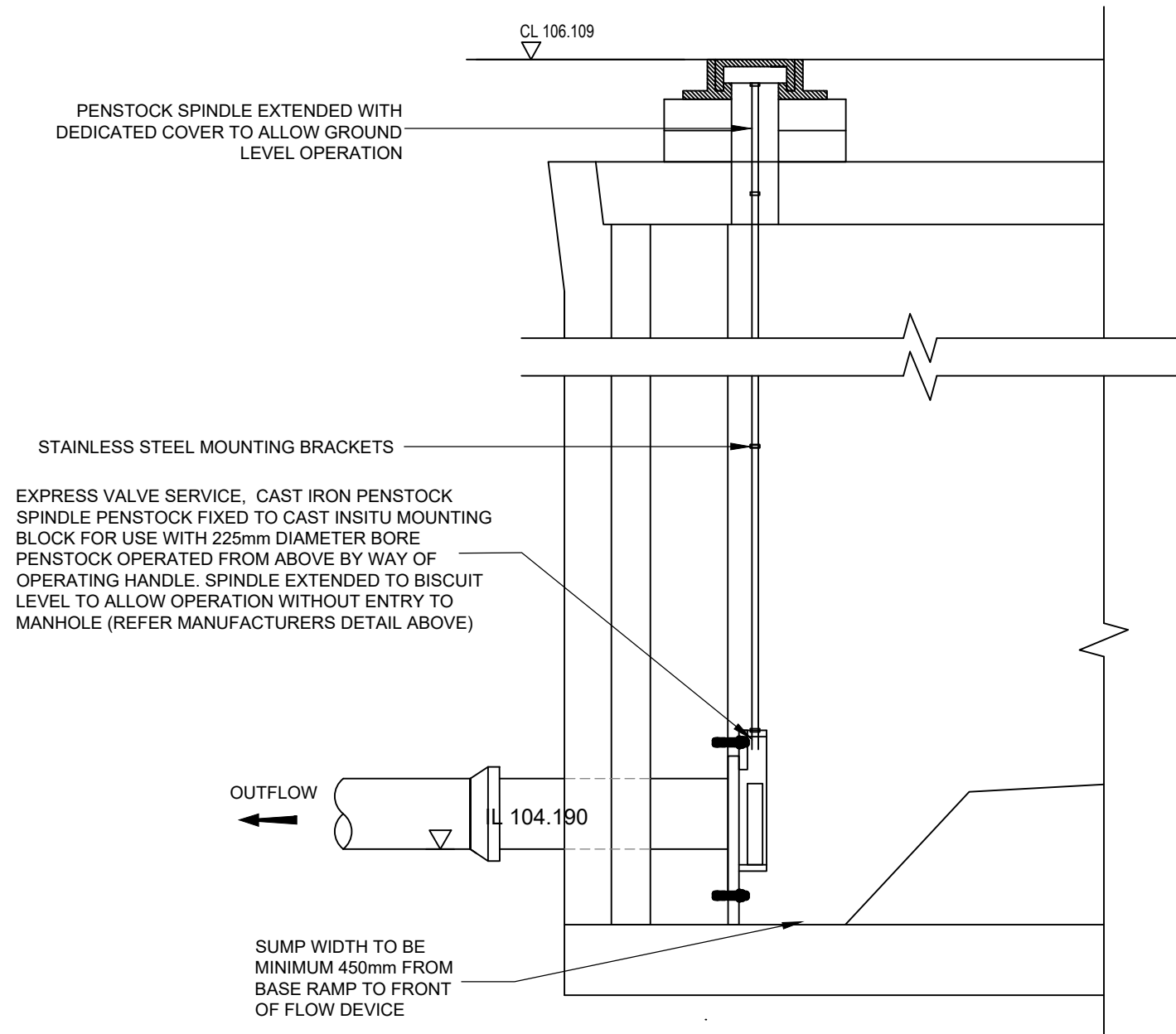
SHORT AND ROCKER PIPE LENGTHS  
TABLE APPLICABLE TO ALL MANHOLE  
TYPES

CONTROL POINT	HEAD	FLOW (l/s)
PRIMARY DESIGN	2.000	11.800
FLUSH FLO	0.589	11.777
KICK FLO	1.213	9.322
MEAN FLOW		10.331

DOUBLE TWIN 600 x 600mm WITH A CLEAR OPENING  
1220 x 675mm D400 COVER TO BS EN124 WITH  
150mm DEEP FRAMES AND A LOCKABLE DOUBLE  
FALL ARREST GRILLE FITTED OVER LANDING AREA  
FOR WINCH ACCESS.



SECTION A - A



SECTION B - B

CONTROL MANHOLE - S15

NOTE

THIS PRINT AND ANY DESIGN THEREON IS THE PROPERTY OF BECKWITH & HANLON CONSULTING ENGINEERS LIMITED AND IS TO BE RETURNED ON REQUEST. IT IS TO BE USED ONLY FOR THE PURPOSE FOR WHICH IT WAS EXPRESSLY LOANED AND IS NOT TO BE COPIED IN ANY MANNER, NOR IS INFORMATION TAKEN THEREFROM TO BE TRANSMITTED OR PASSED TO OTHERS.

DO NOT SCALE OFF THIS DRAWING.

DO NOT TAKE DIGITAL DIMENSIONS OFF THIS DRAWING.

NOTES:

GENERAL

- THIS DRAWING IS TO BE READ IN CONJUNCTION WITH BECKWITH AND HANLON 23-026-200 SERIES DRAWINGS.

P1	FIRST ISSUE	JM	NB	05/04/24
REV	AMENDMENT	BY	CKD	DATE

CLIENT	JOHN SWIFT HOMES LTD.
--------	-----------------------

PROJECT	HARRAS ROAD, WHITEHAVEN
---------	-------------------------

DRAWING TITLE	HYDROBRAKE DETAILS MANHOLE S15
---------------	-----------------------------------

	<b>Beckwith &amp; Hanlon</b> Consulting Engineers Limited F22 Willow Court, Marquis Court, Team Valley Trading Estate, Gateshead, NE11 0RU tel: 0191 273 7582
---	--

SCALE	NTS	BY	JM	CHECKED	NB	DATE	APRIL '24
-------	-----	----	----	---------	----	------	-----------

DRAWING NO.	23-026-237
-------------	------------

STATUS	PRELIMINARY	REV	P1
		SIZE	A1