



DRAINAGE SOLUTIONS LTD

CCTV Inspection Report

**HARRAS DYKE FARM / WHITEHAVEN GOLF COURSE**

**16/10/2023**

**Approved By: S. OAKES**  
**Job Number: SK-S 161-2023**

**SK Drainage Solutions**

31 Adams Road, Workington, Cumbria, CA14 3YS  
Tel: 01900 268189  
office@skds.ltd

## Project Information

Job Number <b>SK-S 161-2023</b>	Surveyed by (Operator) <b>B.HUGHES</b>	Base Unit <b>VJ7B51U7GO</b>	Date <b>16/10/2023</b>
------------------------------------	---	--------------------------------	---------------------------

### Client Details:

THOMAS ARMSTRONG CONSTRUCTION LTD  
WORKINGTON ROAD  
FLIMBY  
MARYPORT  
CA15 8AY

Client Contact Name: IAN STOREY

### Site Details:

HARRAS DYKE FARM / WHITEHAVEN GOLF  
COURSE

Site Contact Name: IAN STOREY

### Contractor Details:

SK Drainage Solutions Ltd  
31 Adams Road  
Workington  
Cumbria  
CA14 3YS

Office Contact Name: S. OAKES  
Office Contact Number: 01900268189

### Purpose of Survey:

SURVEY REQUIRED FROM THE SITE TO THE POND AT THE GOLF COURSE

## Contents Page

Job Number <b>SK-S 161-2023</b>	Surveyed by (Operator) <b>B.HUGHES</b>	Base Unit <b>VJ7B51U7GO</b>	Date <b>16/10/2023</b>
------------------------------------	---	--------------------------------	---------------------------

### Report Contents

Page 1	Cover Page
Page 2	Job Overview
Page 3	Contents Page
Page 4	Job Summary
Page 6	Survey Run Sheet(Survey 1 - MH01 to MH01A)
Page 8	Survey Run Sheet(Survey 2 - MH01 to OUTFALL)
Page 10	Survey Run Sheet(Survey 3 - MH02 to MH01B)
Page 12	Survey Run Sheet(Survey 4 - MH02 to MH03)
Page 14	Survey Run Sheet(Survey 5 - MH03 to MH04)
Page 16	Survey Run Sheet(Survey 6 - MH04 to MH05)
Page 18	Survey Run Sheet(Survey 7 - MH08 to MH07)
Page 20	Survey Run Sheet(Survey 8 - MH01A to MH01B)
Page 22	Defect Summary
Page 24	Grade Defect Descriptions

## Report Summary

Job Number <b>SK-S 161-2023</b>	Surveyed by (Operator) <b>B.HUGHES</b>	Base Unit <b>VJ7B51U7GO</b>	Date <b>16/10/2023</b>
------------------------------------	---	--------------------------------	---------------------------

### Job Information

Total Distance Surveyed: **549.93 metres**  
 Engineer: **B.HUGHES**  
 Number of Surveys: **8**  
 Number of Surveys grade 4 or above: **0**

### Section 1 Overview (16/10/2023)

Manholes: **MH01 to MH01A**  
 Pipe Length: **25.32 metres**  
 Structural Grade: **0**  
 Service Grade: **0**  
 Material: **Concrete**  
 Pipe Size: **300mm**  
 Use: **Surface water**

### Section 2 Overview (16/10/2023)

Manholes: **MH01 to OUTFALL**  
 Pipe Length: **45.84 metres**  
 Structural Grade: **0**  
 Service Grade: **0**  
 Material: **PVC**  
 Pipe Size: **450mm**  
 Use: **Surface water**

### Section 3 Overview (16/10/2023)

Manholes: **MH02 to MH01B**  
 Pipe Length: **208.13 metres**  
 Structural Grade: **0**  
 Service Grade: **0**  
 Material: **Concrete**  
 Pipe Size: **300mm**  
 Use: **Surface water**

### Section 4 Overview (16/10/2023)

Manholes: **MH02 to MH03**  
 Pipe Length: **24.26 metres**  
 Structural Grade: **0**  
 Service Grade: **0**  
 Material: **Concrete**  
 Pipe Size: **300mm**  
 Use: **Surface water**

### Section 5 Overview (16/10/2023)

Manholes: **MH03 to MH04**  
 Pipe Length: **14.89 metres**  
 Structural Grade: **0**  
 Service Grade: **0**  
 Material: **Concrete**  
 Pipe Size: **300mm**  
 Use: **Surface water**

## Report Summary

Job Number <b>SK-S 161-2023</b>	Surveyed by (Operator) <b>B.HUGHES</b>	Base Unit <b>VJ7B51U7GO</b>	Date <b>16/10/2023</b>
<b>Section 6 Overview (16/10/2023)</b> Manholes: <b>MH04 to MH05</b> Pipe Length: <b>76.37 metres</b> Structural Grade: <b>0</b> Service Grade: <b>0</b> Material: <b>Concrete</b> Pipe Size: <b>300mm</b> Use: <b>Surface water</b>			
<b>Section 7 Overview (16/10/2023)</b> Manholes: <b>MH08 to MH07</b> Pipe Length: <b>77.94 metres</b> Structural Grade: <b>0</b> Service Grade: <b>0</b> Material: <b>Concrete</b> Pipe Size: <b>300mm</b> Use: <b>Surface water</b>			
<b>Section 8 Overview (16/10/2023)</b> Manholes: <b>MH01A to MH01B</b> Pipe Length: <b>77.18 metres</b> Structural Grade: <b>0</b> Service Grade: <b>0</b> Material: <b>Concrete</b> Pipe Size: <b>300mm</b> Use: <b>Surface water</b>			

# CCTV Inspection Report

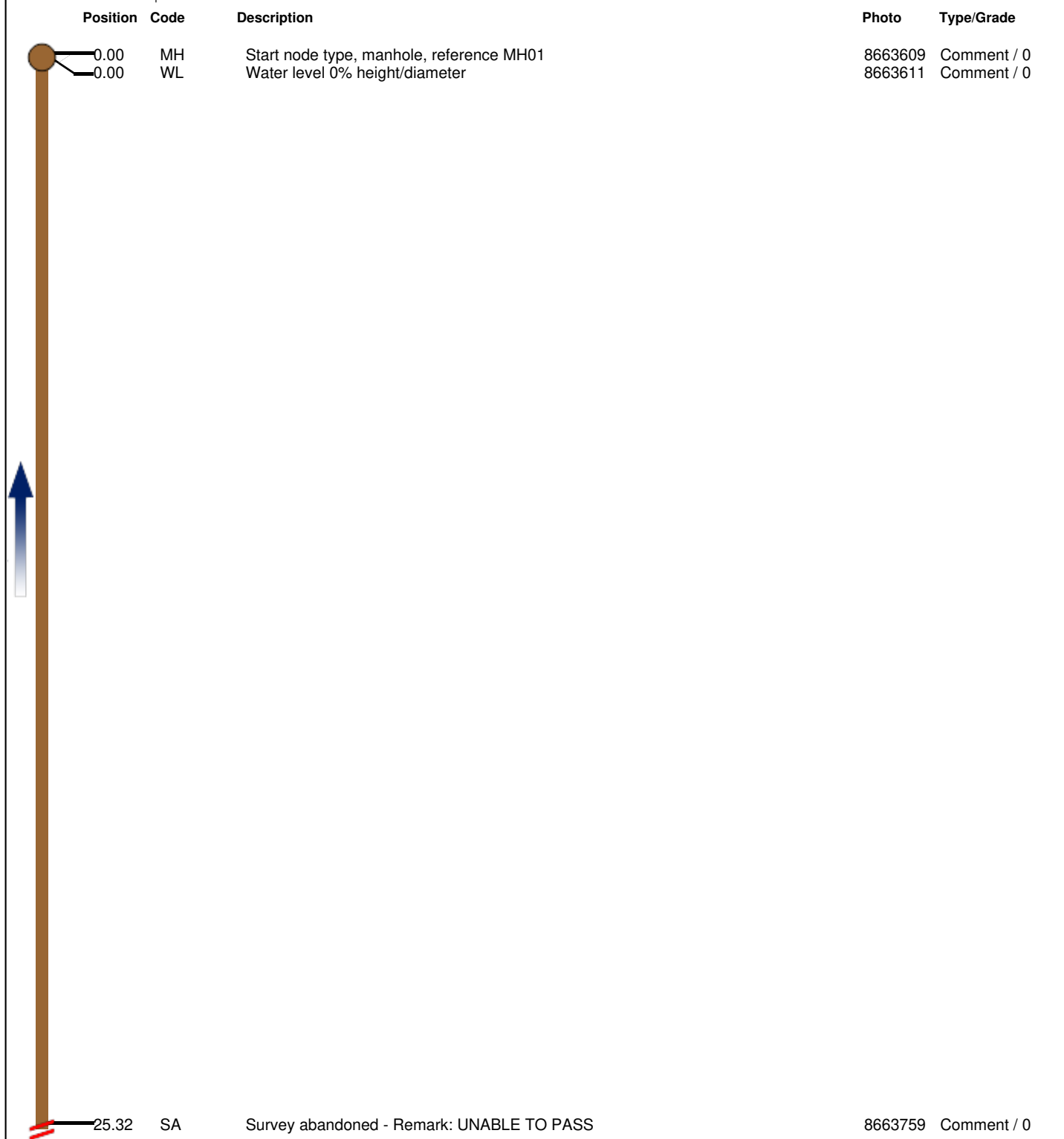
Surveyed by (Operator) <b>B.HUGHES</b>	Job Number <b>SK-S 161-2023</b>	Pipe Length Reference(PLR) <b>MH01A X</b>	Date <b>16/10/2023</b>	Pre Cleaned <b>Not Cleaned</b>
Weather <b>1 - Dry</b>	Customer Present	Service Grade/Structural Grade <b>0/0</b>	Base Unit <b>VJ7B51U7GO</b>	Section Number <b>1</b>

Road <b>HARRAS DYKE FARM / WHITEHAVEN GOLF COURSE</b>	Division
Place	District
Location	Location Details

Purpose Duty <b>Surface water</b> Catchment	Shape/Size <b>300mm</b> Material <b>Concrete</b> Category	Start Node <b>MH01</b> End Node <b>MH01A</b> Total length <b>25.32 metres</b>
---	---	---

Scale <b>1:1.33</b> Direction <b>Upstream</b>
--

Start Node Ref:MH01 | I/L : metres

Position	Code	Description	Photo	Type/Grade
0.00	MH	Start node type, manhole, reference MH01	8663609	Comment / 0
0.00	WL	Water level 0% height/diameter	8663611	Comment / 0
				
25.32	SA	Survey abandoned - Remark: UNABLE TO PASS	8663759	Comment / 0

End Node Ref:MH01A | I/L : metres

CCTV Inspection Photos

Job Number SK-S 161-2023	Surveyed by (Operator) B.HUGHES	Base Unit VJ7B51U7GO	Date 16/10/2023
-----------------------------	------------------------------------	-------------------------	--------------------



Start node type, manhole, reference MH01



Water level 0% height/diameter

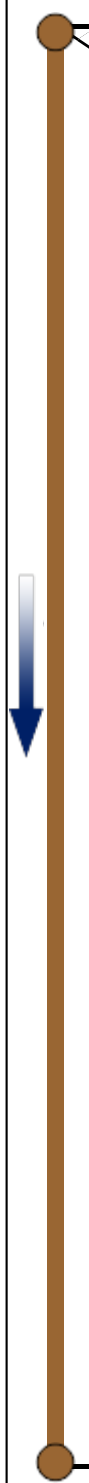


Survey abandoned - Remark: UNABLE TO PASS

# CCTV Inspection Report

Surveyed by (Operator) <b>B.HUGHES</b>	Job Number <b>SK-S 161-2023</b>	Pipe Length Reference(PLR) <b>MH01 X</b>	Date <b>16/10/2023</b>	Pre Cleaned <b>Not Cleaned</b>
Weather <b>1 - Dry</b>	Customer Present	Service Grade/Structural Grade <b>0/0</b>	Base Unit <b>VJ7B51U7GO</b>	Section Number <b>2</b>
Road <b>HARRAS DYKE FARM / WHITEHAVEN GOLF COURSE</b>		Division		
Place		District		
Location		Location Details		
Purpose Duty <b>Surface water</b> Catchment	Shape/Size <b>450mm</b> Material <b>PVC</b> Category	Start Node <b>MH01</b> End Node <b>OUTFALL</b> Total length <b>45.84 metres</b>		
Scale <b>1:2.41</b> Direction <b>Downstream</b>				

Start Node Ref:MH01 | I/L : metres

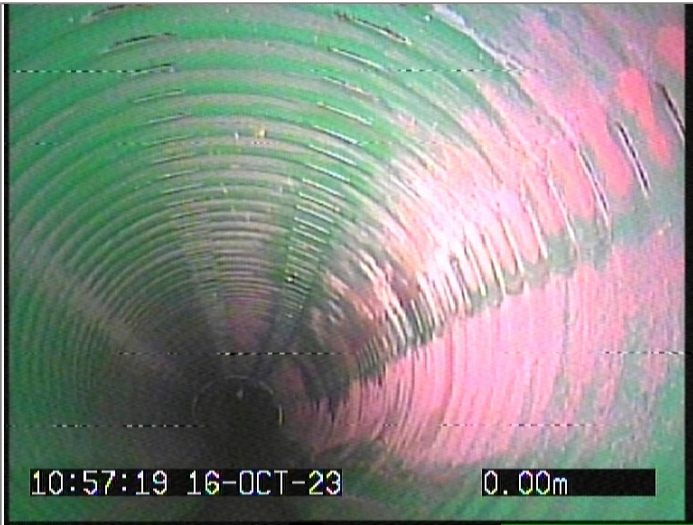
Position	Code	Description	Photo	Type/Grade
0.00	MH	Start node type, manhole, reference MH01	8663857	Comment / 0
0.00	WL	Water level 0% height/diameter	8663858	Comment / 0
				
45.84	OFF	Finish node type, outfall, reference OUTFALL	8663942	Comment / 0

End Node Ref:OUTFALL | I/L : metres

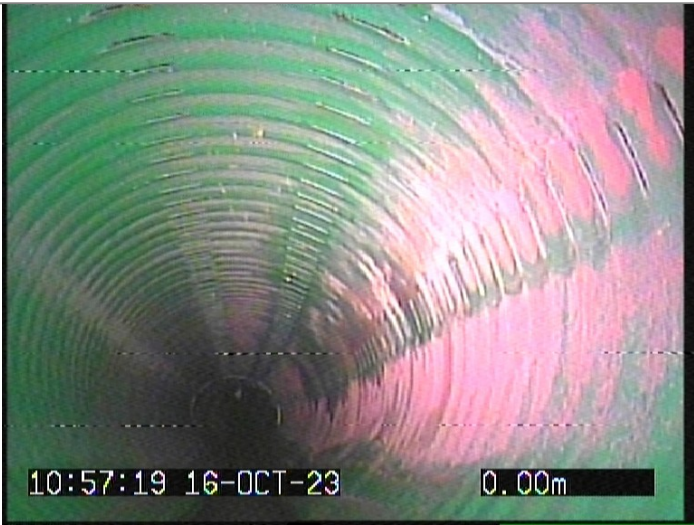


CCTV Inspection Photos

Job Number SK-S 161-2023	Surveyed by (Operator) B.HUGHES	Base Unit VJ7B51U7GO	Date 16/10/2023
-----------------------------	------------------------------------	-------------------------	--------------------



Start node type, manhole, reference MH01



Water level 0% height/diameter



Finish node type, outfall, reference OUTFALL

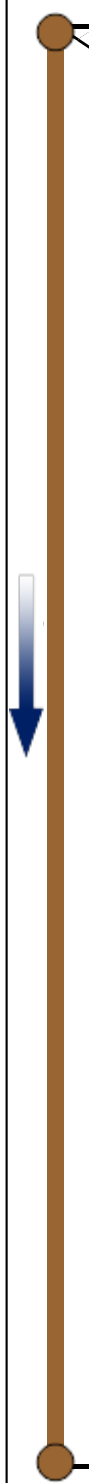
# CCTV Inspection Report

Surveyed by (Operator) <b>B.HUGHES</b>	Job Number <b>SK-S 161-2023</b>	Pipe Length Reference(PLR) <b>MH02 X</b>	Date <b>16/10/2023</b>	Pre Cleaned <b>Not Cleaned</b>
Weather <b>1 - Dry</b>	Customer Present	Service Grade/Structural Grade <b>0/0</b>	Base Unit <b>VJ7B51U7GO</b>	Section Number <b>3</b>

Road <b>HARRAS DYKE FARM / WHITEHAVEN GOLF COURSE</b>	Division
Place	District
Location	Location Details

Purpose Duty <b>Surface water</b> Catchment	Shape/Size <b>300mm</b> Material <b>Concrete</b> Category	Start Node <b>MH02</b> End Node <b>MH01B</b> Total length <b>208.13 metres</b>
---	---	--

Scale <b>1:10.93</b> Direction <b>Downstream</b>
---

Start Node Ref:MH02   I/L : metres				Photo	Type/Grade
Position	Code	Description			
0.00	MH	Start node type, manhole, reference MH02		8664218	Comment / 0
0.00	WL	Water level 5% height/diameter		8664220	Comment / 0
					
208.13	MHF	Finish node type, manhole, reference MH01A		8664821	Comment / 0
End Node Ref:MH01B   I/L : metres					

# CCTV Inspection Photos

Job Number <b>SK-S 161-2023</b>	Surveyed by (Operator) <b>B.HUGHES</b>	Base Unit <b>VJ7B51U7GO</b>	Date <b>16/10/2023</b>
------------------------------------	---	--------------------------------	---------------------------



Start node type, manhole, reference MH02



Water level 5% height/diameter



Finish node type, manhole, reference MH01A

Surveyed by (Operator) <b>B.HUGHES</b>	Job Number <b>SK-S 161-2023</b>	Pipe Length Reference(PLR) <b>MH03 X</b>	Date <b>16/10/2023</b>	Pre Cleaned <b>Not Cleaned</b>
Weather <b>1 - Dry</b>	Customer Present	Service Grade/Structural Grade <b>0/0</b>	Base Unit <b>VJ7B51U7GO</b>	Section Number <b>4</b>

Road <b>HARRAS DYKE FARM / WHITEHAVEN GOLF COURSE</b>	Division
Place	District
Location	Location Details

Purpose Duty <b>Surface water</b> Catchment	Shape/Size <b>300mm</b> Material <b>Concrete</b> Category	Start Node <b>MH02</b> End Node <b>MH03</b> Total length <b>24.26 metres</b>
---	---	--

Scale **1:1.27**  
Direction **Upstream**

Start Node Ref:MH02 | I/L : metres

The diagram illustrates a vertical pipe section. At the top, a brown circular node is labeled '0.00 MH' with the description 'Start node type, manhole, reference MH02'. Below it, a horizontal line segment is labeled '0.00 WL' with the description 'Water level 10% height/diameter'. The pipe itself is a long vertical brown line. On the left side of the pipe, there is a blue arrow pointing upwards, indicating the direction of flow or water level. At the bottom of the pipe, another brown circular node is labeled '24.26 MHF' with the description 'Finish node type, manhole, reference MH03'. To the right of the diagram, there are two columns of data: 'Photo' and 'Type/Grade'. The 'Photo' column contains two entries: '8665567' and '8665568'. The 'Type/Grade' column contains two entries: 'Comment / 0' and 'Comment / 0'.

Position	Code	Description	Photo	Type/Grade
0.00	MH	Start node type, manhole, reference MH02	8665567	Comment / 0
0.00	WL	Water level 10% height/diameter	8665568	Comment / 0
24.26	MHF	Finish node type, manhole, reference MH03	8665577	Comment / 0

End Node Ref:MH03 | I/L : metres

End Node Ref:MH03 | I/L : metres



# CCTV Inspection Photos

Job Number <b>SK-S 161-2023</b>	Surveyed by (Operator) <b>B.HUGHES</b>	Base Unit <b>VJ7B51U7GO</b>	Date <b>16/10/2023</b>
------------------------------------	---	--------------------------------	---------------------------



Start node type, manhole, reference MH02



Water level 10% height/diameter



Finish node type, manhole, reference MH03

Surveyed by (Operator) <b>B.HUGHES</b>	Job Number <b>SK-S 161-2023</b>	Pipe Length Reference(PLR) <b>MH04 X</b>	Date <b>16/10/2023</b>	Pre Cleaned <b>Not Cleaned</b>
Weather <b>1 - Dry</b>	Customer Present	Service Grade/Structural Grade <b>0/0</b>	Base Unit <b>VJ7B51U7GO</b>	Section Number <b>5</b>

Road <b>HARRAS DYKE FARM / WHITEHAVEN GOLF COURSE</b>	Division
Place	District
Location	Location Details

Purpose Duty <b>Surface water</b> Catchment	Shape/Size <b>300mm</b> Material <b>Concrete</b> Category	Start Node <b>MH03</b> End Node <b>MH04</b> Total length <b>14.89 metres</b>
---	---	--

Scale **1:0.78**  
Direction **Upstream**

Start Node Ref:MH03 | I/L : metres

The diagram illustrates a vertical pipe section. At the top, a brown circular node is labeled '0.00 MH' (Manhole) and '0.00 WL' (Water Level). The description for this node is 'Start node type, manhole, reference MH03' and 'Water level 5% height/diameter'. At the bottom, another brown circular node is labeled '14.89 MHF' (Manhole Finish) and 'MHF'. The description for this node is 'Finish node type, manhole, reference MH04'. A blue arrow points upwards along the pipe, indicating flow direction. The pipe itself is a thick brown vertical line. To the right of the diagram, there are two columns of data: 'Photo' and 'Type/Grade'. The 'Photo' column contains the values '8665587' and '8665588'. The 'Type/Grade' column contains the values 'Comment / 0' and 'Comment / 0'. At the bottom left, there is a text label 'End Node Ref:MH04 | I/L : metres'.

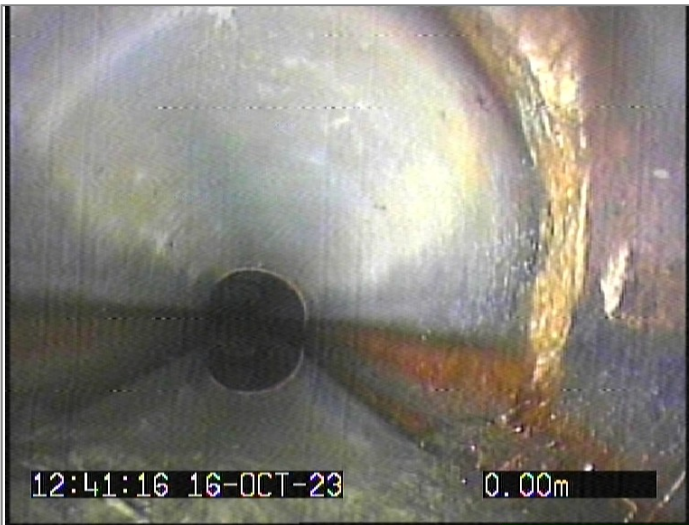
Position	Code	Description	Photo	Type/Grade
0.00	MH	Start node type, manhole, reference MH03	8665587	Comment / 0
0.00	WL	Water level 5% height/diameter	8665588	Comment / 0
14.89	MHF	Finish node type, manhole, reference MH04	8665610	Comment / 0

End Node Ref:MH04 | I/L : metres

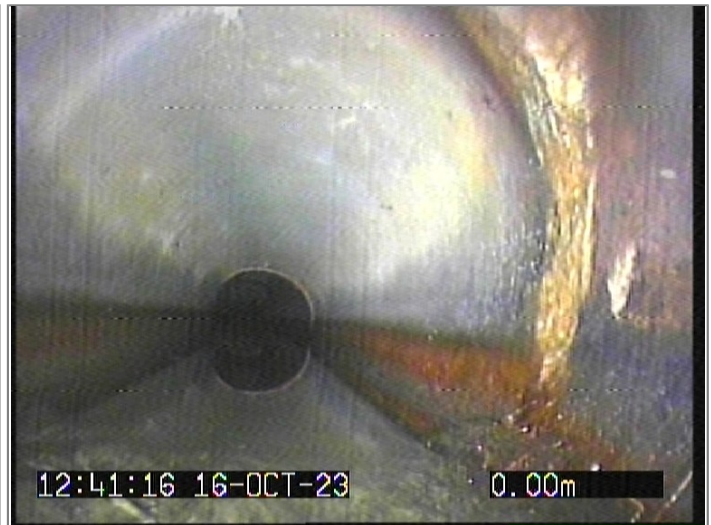
End Node Ref:MH04 | I/L : metres

# CCTV Inspection Photos

Job Number <b>SK-S 161-2023</b>	Surveyed by (Operator) <b>B.HUGHES</b>	Base Unit <b>VJ7B51U7GO</b>	Date <b>16/10/2023</b>
------------------------------------	---	--------------------------------	---------------------------



Start node type, manhole, reference MH03



Water level 5% height/diameter



Finish node type, manhole, reference MH04

Surveyed by (Operator) <b>B.HUGHES</b>	Job Number <b>SK-S 161-2023</b>	Pipe Length Reference(PLR) <b>MH05 X</b>	Date <b>16/10/2023</b>	Pre Cleaned <b>Not Cleaned</b>
Weather <b>1 - Dry</b>	Customer Present	Service Grade/Structural Grade <b>0/0</b>	Base Unit <b>VJ7B51U7GO</b>	Section Number <b>6</b>

Road <b>HARRAS DYKE FARM / WHITEHAVEN GOLF COURSE</b>	Division
Place	District
Location	Location Details

Purpose Duty <b>Surface water</b> Catchment	Shape/Size <b>300mm</b> Material <b>Concrete</b> Category	Start Node <b>MH04</b> End Node <b>MH05</b> Total length <b>76.37 metres</b>
---	---	--

Scale **1:4.01**  
Direction **Upstream**

Start Node Ref:MH04 | I/L : metres

Position	Code	Description	Photo	Type/Grade
0.00	MH	Start node type, manhole, reference MH04	8666404	Comment / 0
0.00	WL	Water level 20% height/diameter	8666409	Comment / 0

Photo	Type/Grade
8666492	Comment / 0

End Node Ref:MH05 | I/L : metres

End Node Ref:MH05 | I/L : metres



CCTV Inspection Photos

Job Number SK-S 161-2023	Surveyed by (Operator) B.HUGHES	Base Unit VJ7B51U7GO	Date 16/10/2023
-----------------------------	------------------------------------	-------------------------	--------------------



Start node type, manhole, reference MH04



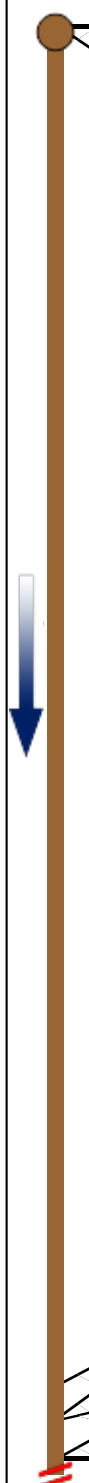
Water level 20% height/diameter








Finish node type, manhole, reference MH05

# CCTV Inspection Report

Surveyed by (Operator) <b>B.HUGHES</b>	Job Number <b>SK-S 161-2023</b>	Pipe Length Reference(PLR) <b>MH08 X</b>	Date <b>16/10/2023</b>	Pre Cleaned <b>Not Cleaned</b>
Weather <b>1 - Dry</b>	Customer Present	Service Grade/Structural Grade <b>0/0</b>	Base Unit <b>VJ7B51U7GO</b>	Section Number <b>7</b>
Road <b>HARRAS DYKE FARM / WHITEHAVEN GOLF COURSE</b>		Division		
Place		District		
Location		Location Details		
Purpose Duty <b>Surface water</b> Catchment	Shape/Size <b>300mm</b> Material <b>Concrete</b> Category	Start Node <b>MH08</b> End Node <b>MH07</b> Total length <b>77.94 metres</b>		
Scale <b>1:4.09</b> Direction <b>Downstream</b>				

Start Node Ref:MH08   I/L : metres						
Position	Code	Description	Photo	Type/Grade		
0.00	MH	Start node type, manhole, reference MH08	8667618	Comment / 0		
	WL	Water level 5% height/diameter	8667619	Comment / 0		
						
73.87	WL (S1)	Water level 40% height/diameter, Start	8743045	Comment / 0		
75.70	WL (F1)	Water level 40% height/diameter, Finished	8743046	Comment / 0		
75.70	CUW (S2)	Loss of vision, camera under water, Start	8743047	Comment / 0		
77.83	CUW (F2)	Loss of vision, camera under water, Finished	8743048	Comment / 0		
77.94	SA	Survey abandoned - Remark: CAMERA UNDER WATER LOSS OF VISION CAMERA NOT MOVING	8667620	Comment / 0		
End Node Ref:MH07   I/L : metres						

# CCTV Inspection Photos

Job Number <b>SK-S 161-2023</b>	Surveyed by (Operator) <b>B.HUGHES</b>	Base Unit <b>VJ7B51U7GO</b>	Date <b>16/10/2023</b>
 <p>15:03:24 16-OCT-23 0.00m</p> <p>Start node type, manhole, reference MH08, Water level 5% height/diameter, Water level 40% height/diameter, Start</p>			
 <p>From: MH08 / To: MH07 Size: 300</p> <p>15:08:50 16-OCT-23 75.70m</p> <p>Water level 40% height/diameter, Finished</p>			
 <p>From: MH08 / To: MH07 Size: 300</p> <p>15:08:50 16-OCT-23 75.70m</p> <p>Loss of vision, camera under water, Start</p>			
 <p>From: MH08 / To: MH07 Size: 300</p> <p>15:09:30 16-OCT-23 77.83m</p> <p>Loss of vision, camera under water, Finished</p>			
 <p>From: MH08 / To: MH07 Size: 300</p> <p>15:10:34 16-OCT-23 77.94m</p> <p>Survey abandoned - Remark: CAMERA UNDER WATER LOSS OF VISION CAMERA NOT MOVING</p>			



# CCTV Inspection Report

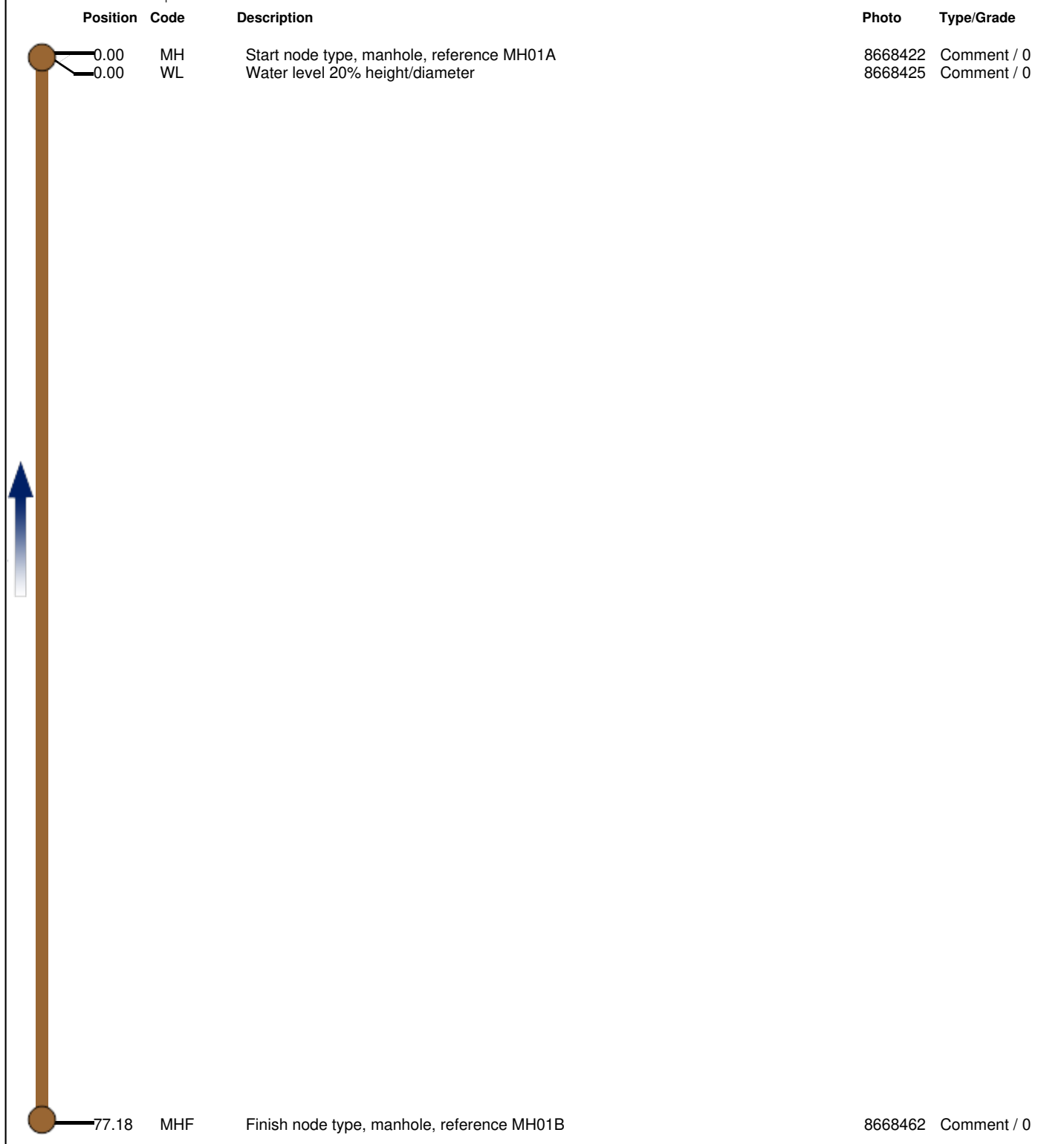
Surveyed by (Operator) <b>B.HUGHES</b>	Job Number <b>SK-S 161-2023</b>	Pipe Length Reference(PLR) <b>MH01B X</b>	Date <b>16/10/2023</b>	Pre Cleaned <b>Not Cleaned</b>
Weather <b>1 - Dry</b>	Customer Present	Service Grade/Structural Grade <b>0/0</b>	Base Unit <b>VJ7B51U7GO</b>	Section Number <b>8</b>

Road <b>HARRAS DYKE FARM / WHITEHAVEN GOLF COURSE</b>	Division
Place	District
Location	Location Details

Purpose Duty <b>Surface water</b> Catchment	Shape/Size <b>300mm</b> Material <b>Concrete</b> Category	Start Node <b>MH01A</b> End Node <b>MH01B</b> Total length <b>77.18 metres</b>
---	---	--

Scale <b>1:4.05</b> Direction <b>Upstream</b>
--

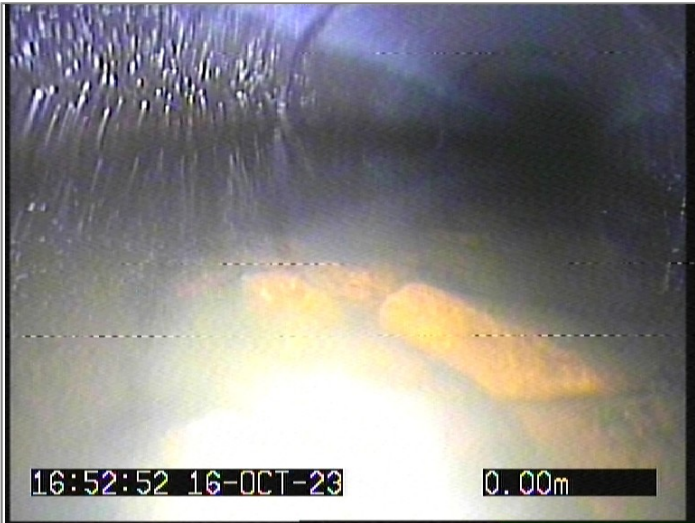
Start Node Ref:MH01A | I/L : metres

Position	Code	Description	Photo	Type/Grade
0.00	MH	Start node type, manhole, reference MH01A	8668422	Comment / 0
0.00	WL	Water level 20% height/diameter	8668425	Comment / 0
				
77.18	MHF	Finish node type, manhole, reference MH01B	8668462	Comment / 0

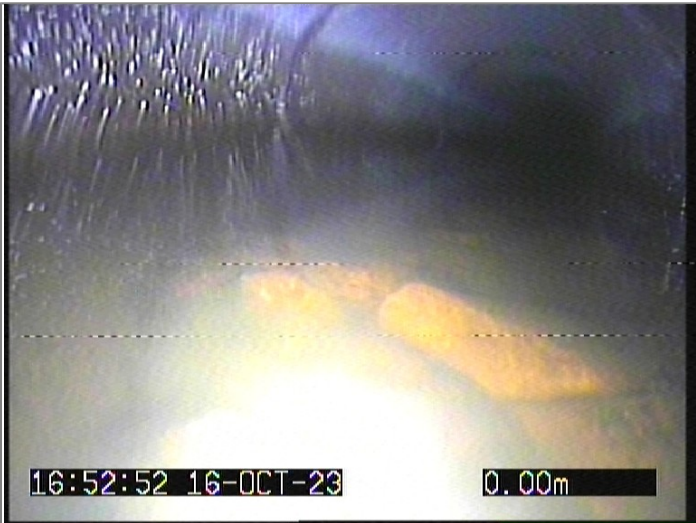
End Node Ref:MH01B | I/L : metres

CCTV Inspection Photos

Job Number SK-S 161-2023	Surveyed by (Operator) B.HUGHES	Base Unit VJ7B51U7GO	Date 16/10/2023
-----------------------------	------------------------------------	-------------------------	--------------------



Start node type, manhole, reference MH01A



Water level 20% height/diameter



Finish node type, manhole, reference MH01B

## Structural Defects (SRM 4)

Job Number <b>SK-S 161-2023</b>				Surveyed by (Operator) <b>B.HUGHES</b>			Base Unit <b>VJ7B51U7GO</b>			Date <b>16/10/2023</b>			
No.	PLR	Dir.	Use	Shape/Size	Date	Mat.	Total Length	Inspection Length	Cat.	Peak Score	Grade	Mean Score	Total Score
1	MH01A X	U	S	300	16/10/2023	Concrete	25.32 metres	25.32		0	1	0	0
2	MH01 X	D	S	450	16/10/2023	PVC	45.84 metres	45.84		0	1	0	0
3	MH02 X	D	S	300	16/10/2023	Concrete	208.13 metres	208.13		0	1	0	0
4	MH03 X	U	S	300	16/10/2023	Concrete	24.26 metres	24.26		0	1	0	0
5	MH04 X	U	S	300	16/10/2023	Concrete	14.89 metres	14.89		0	1	0	0
6	MH05 X	U	S	300	16/10/2023	Concrete	76.37 metres	76.37		0	1	0	0
7	MH08 X	D	S	300	16/10/2023	Concrete	77.94 metres	77.94		0	1	0	0
8	MH01B X	U	S	300	16/10/2023	Concrete	77.18 metres	77.18		0	1	0	0

## Service Defects (SRM 4)

Job Number <b>SK-S 161-2023</b>				Surveyed by (Operator) <b>B.HUGHES</b>			Base Unit <b>VJ7B51U7GO</b>			Date <b>16/10/2023</b>			
No.	PLR	Dir.	Use	Shape/Size	Date	Mat.	Total Length	Inspection Length	Cat.	Peak Score	Grade	Mean Score	Total Score
1	MH01A X	U	S	300	16/10/2023	Concrete	25.32 metres	25.32		0	1	0	0
2	MH01 X	D	S	450	16/10/2023	PVC	45.84 metres	45.84		0	1	0	0
3	MH02 X	D	S	300	16/10/2023	Concrete	208.13 metres	208.13		0	1	0	0
4	MH03 X	U	S	300	16/10/2023	Concrete	24.26 metres	24.26		0	1	0	0
5	MH04 X	U	S	300	16/10/2023	Concrete	14.89 metres	14.89		0	1	0	0
6	MH05 X	U	S	300	16/10/2023	Concrete	76.37 metres	76.37		0	1	0	0
7	MH08 X	D	S	300	16/10/2023	Concrete	77.94 metres	77.94		0	1	0	0
8	MH01B X	U	S	300	16/10/2023	Concrete	77.18 metres	77.18		0	1	0	0

## Defect Grade Descriptions

Job Number <b>SK-S 161-2023</b>	Surveyed by (Operator) <b>B.HUGHES</b>	Base Unit <b>VJ7B51U7GO</b>	Date <b>16/10/2023</b>
<p>1: Occurences without damage. For example, laterals, joints,etc.</p> <p>NO DEFECTS WERE DETECTED.</p>			
<p>2: Constructional deficiencies or occurences with insignificant influence to tightness, hydraulic or static pressure or pipe: Eg. wide joints, badly torched intakes, minor deformation of plastic pipes, minor erosions etc.</p> <p>REHABILITATION CAN BE SCHEDULED LONG-TERM.</p>			
<p>3: Constructional deficiencies diminishing static, hydraulic and tightness: Eg. untorched intakes, cracks, minor drainage obstructions such as calcite build ups, protruding laterals, minor damages to pipe wall, individual root penetrations, corroded pipe walls etc.</p> <p>REHABILITATION IS NECESSARY MEDIUM-TERM WITHIN 3 TO 5 YEARS.</p>			
<p>4: Constructional damages with insufficient static safety, hydraulic or tightness: Eg. axial/radial pipe bursts, pipe deformations, visually noticeable infiltration/exfiltration, cavities, in pipe-wall, severe protruding, laterals severe root penetrations, severe corrosion of pipe wall etc.</p> <p>REHABILITATION PROCEDURE IS URGENT AND HAS TO BE COMPLETED WITHIN 1 TO 2 YEARS. NECESSITY FOR EMERGENCY OPERATIONS HAS TO BE EXAMINED.</p>			
<p>5: Pipe is already or will shortly be impermeable: Eg. collapsed pipe, deeply rooted pipe or other drainage obstructions. Pipe loses water or danger of backwater in basements etc.</p> <p>REHABILITATION IS URGENT AND SHORT-TERM. IN ORDER TO PREVENT FURTHER DAMAGE, NECESSARY TEMPORARY SPOT REPAIR HAS TO BE CONDUCTED ON EMERGENCY LEVEL.</p>			