



HARPER (A)

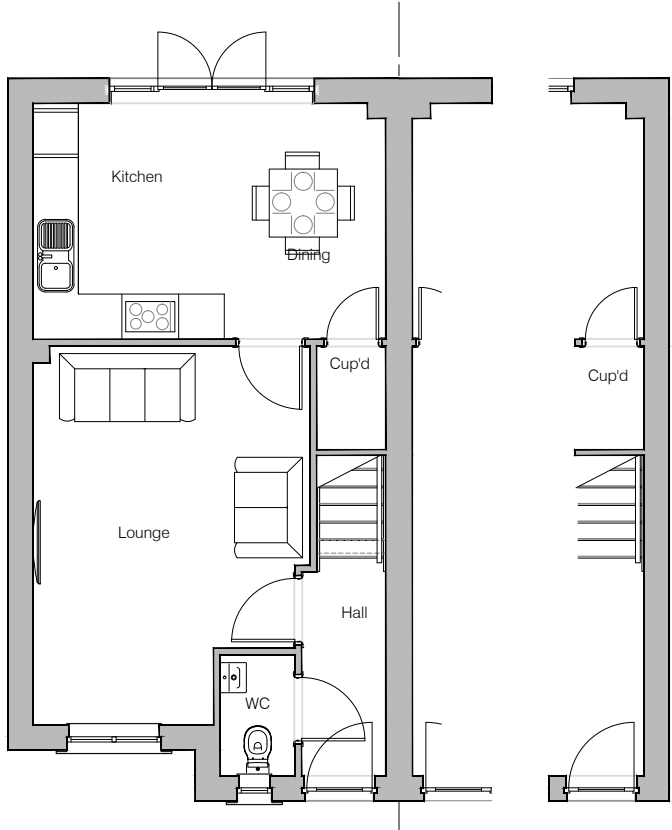
Planning Drawings

GF: 40.47 m2 (435.62 ft2)
FF: 38.96 m2 (419.36 ft2)
TOTAL: 79.43 m2 (854.98 ft2)

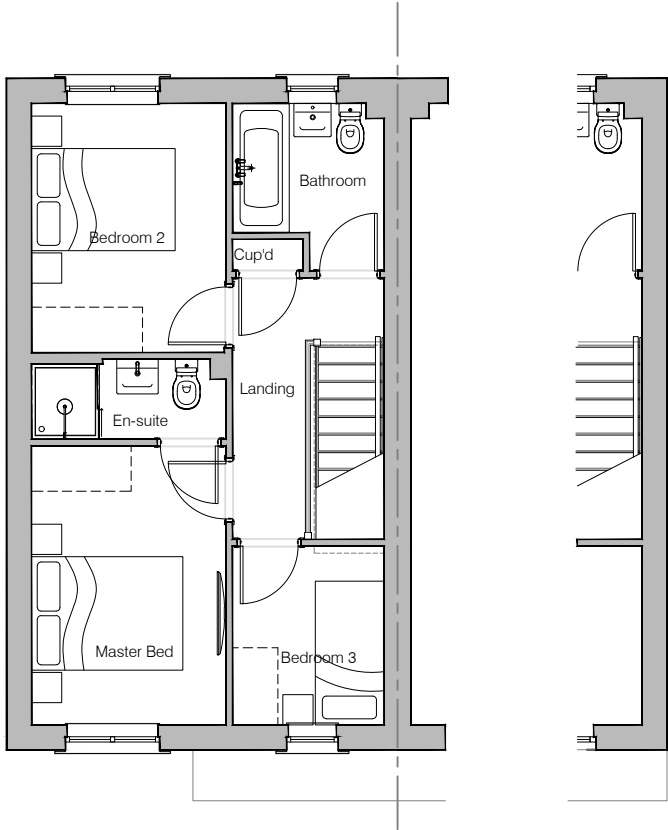
© **Story Homes.**

Story House, Lords Way, Kingmoor Business Park,
Carlisle, Cumbria. CA6 4SL.

Tel 01228 404550
Fax 01228 404551



Ground Floor Layout



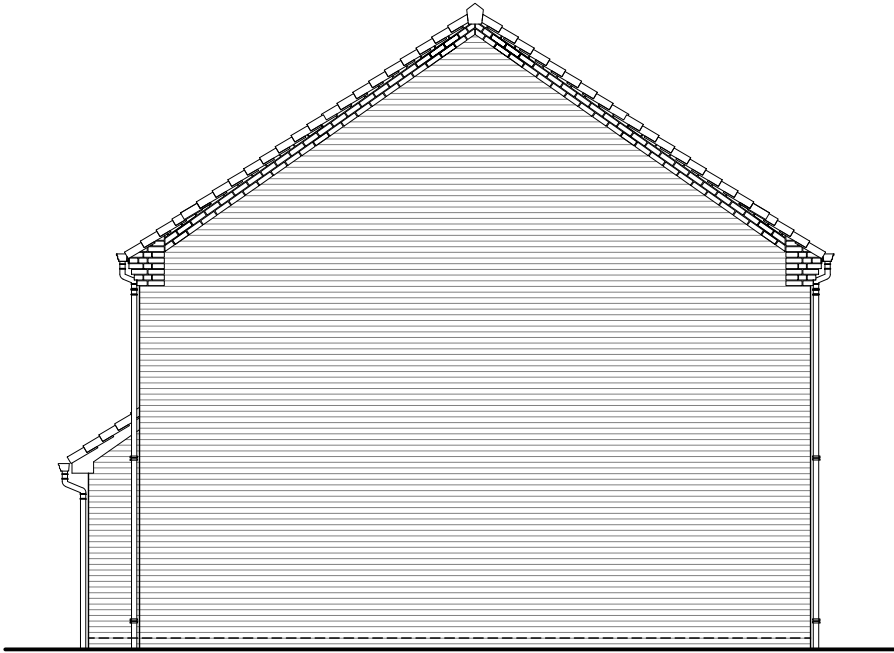
First Floor Layout



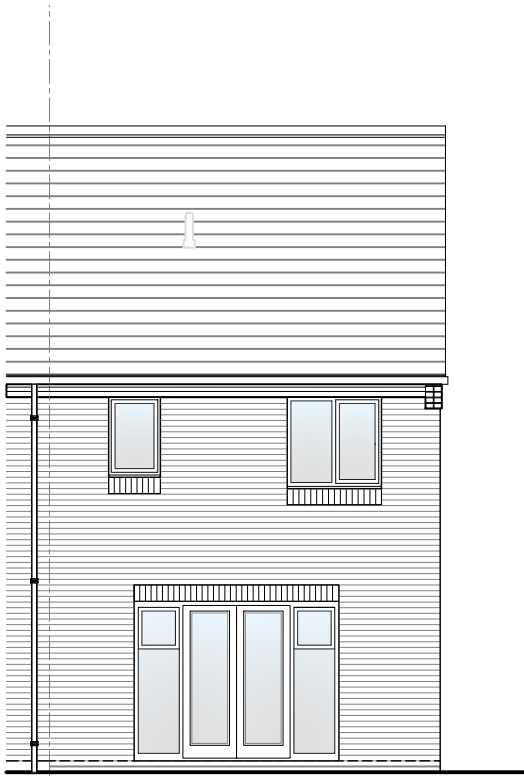
HOUSE TYPE		
HARPER (A)		
DRAWING		
Planning Layout 1		
DRAWN BY	AB	DATE
CHECKED BY	AH	SCALE
DWG PACK	A/10	REVISION
	HPR-PLP1	B
Revisions	Notes	Date
A	En-Suite shower size amended	17/06/19
B	Bedroom 3 window repositioned. French doors widened.	09/06/21



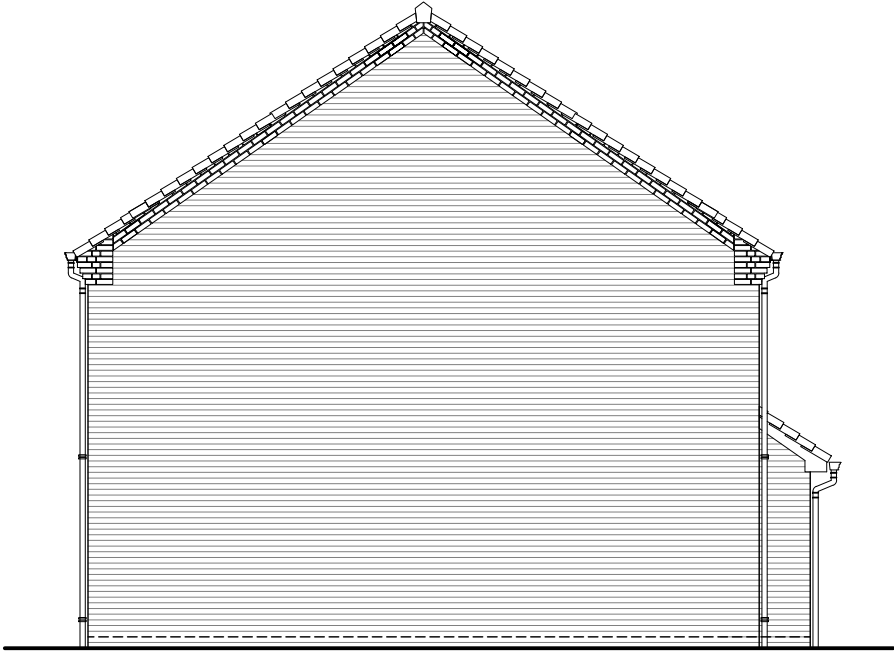
Front Elevation



Left Elevation



Rear Elevation



Right Elevation

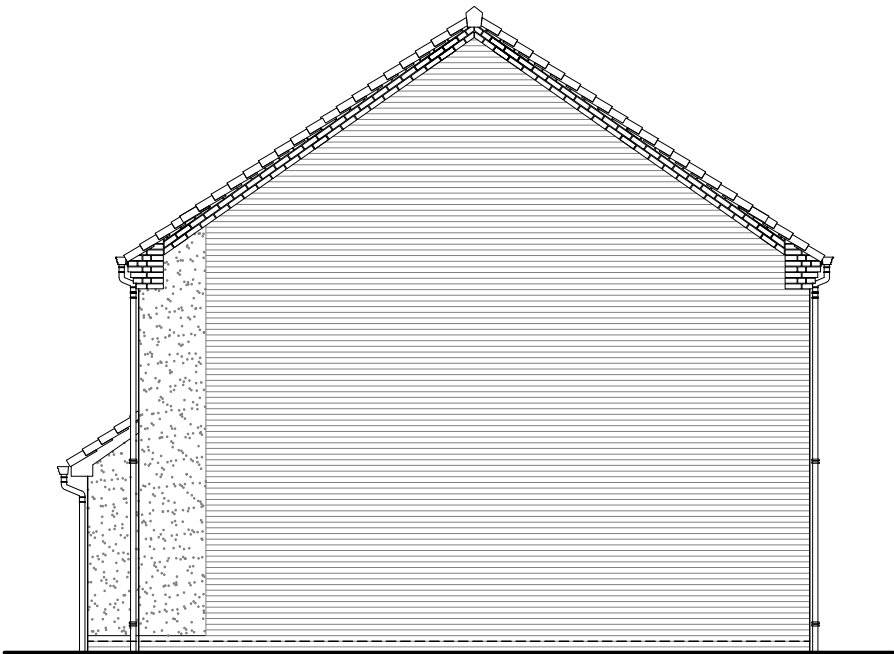
NOTES



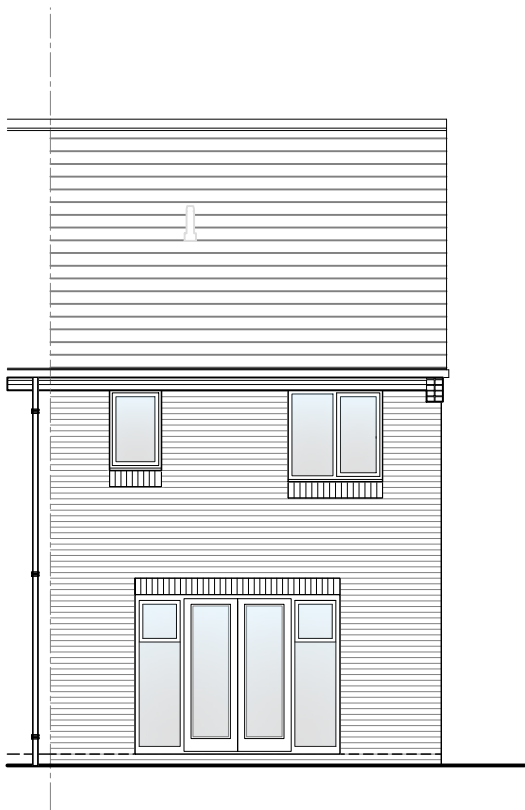
HOUSE TYPE			
HARPER (A)			
DRAWING			
Planning Elevation 1/1			
DRAWN BY	AB	DATE	01/02/19
CHECKED BY	AH	SCALE	1:100@A3
DWG PACK	A/10	DRAWING NUMBER	HPR-PLE1/1
		REVISION	C
Revisions	Notes	Date	
A	RWP positions amended	17/06/19	
B	Services omitted	04/06/20	
C	First Floor Bedroom window over front build out repositioned. French doors widened & top lights added to sidelights.	09/06/21	



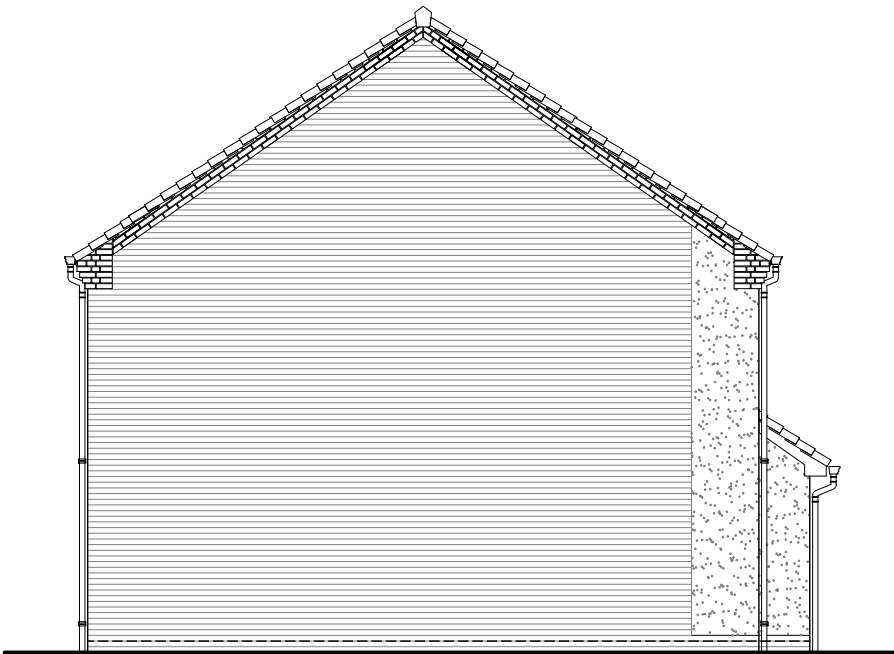
Front Elevation



Left Elevation



Rear Elevation



Right Elevation

NOTES



HOUSE TYPE

HARPER (A)

DRAWING

Planning Elevation 1/2

DRAWN BY	AB	DATE	01/02/19
CHECKED BY	AH	SCALE	1:100@A3
DWG PACK	DRAWING NUMBER	REVISION	
A/10	HPR-PLE1/2	C	
Revisions	Notes	Date	
A	RWP positions amended	17/06/19	
B	Services omitted. Bottom of render finish raised by 75mm.	04/06/20	
C	Render return amended. First Floor Bedroom window over front build out repositioned. French doors widened & top lights added to sidelights.	09/06/21	
© Story Homes.			
Story House, Lords Way, Kingmoor Business Park, Carlisle, Cumbria. CA6 4SL			
Tel 01228 404550		Fax 01228 404551	