



## HARPER (A20)

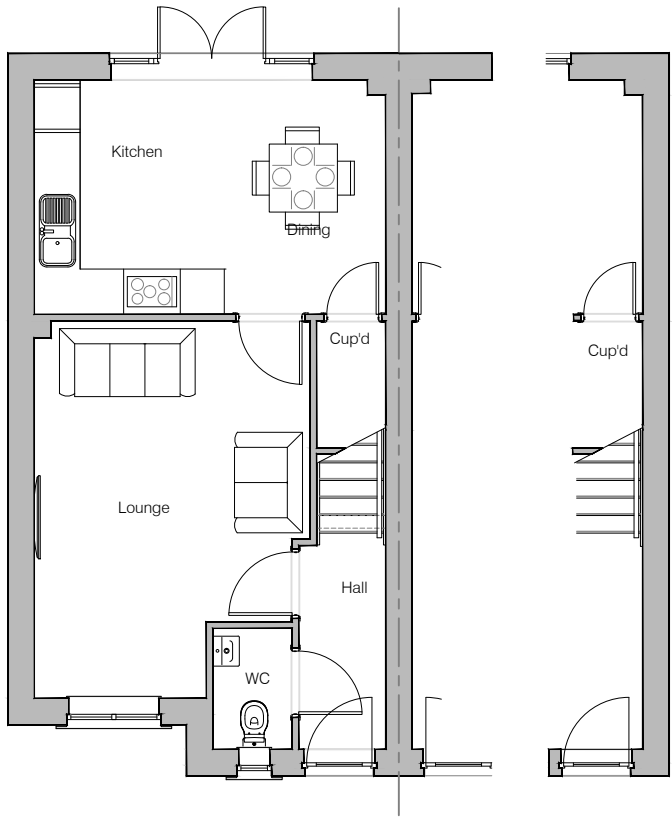
Planning Drawings - Contemporary

GF: 40.20 m2 ( 432.71 ft2 )  
FF: 38.63 m2 ( 415.81 ft2 )  
TOTAL: 79 m2 ( 849 ft2 )

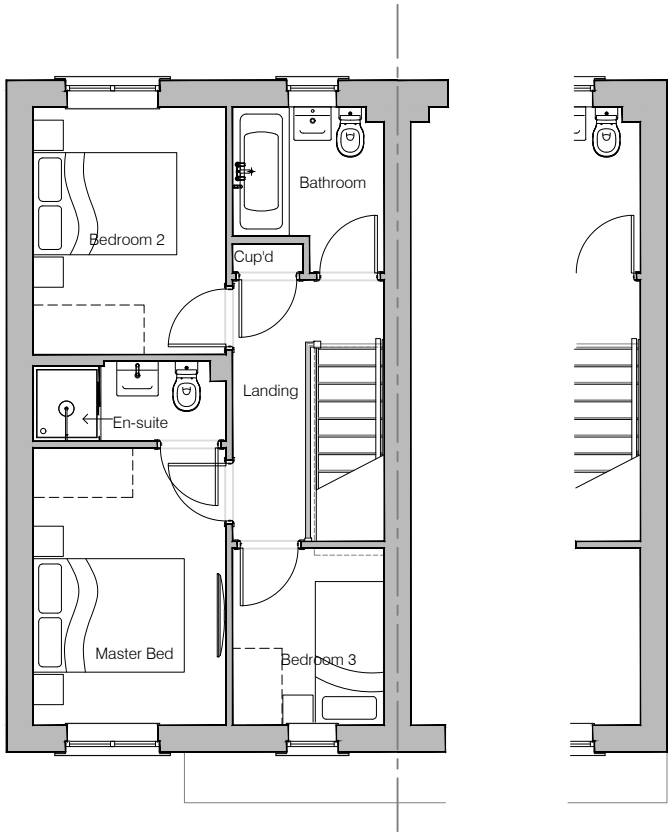
© **Story Homes.**

Story House, Lords Way, Kingmoor Business Park,  
Carlisle, Cumbria. CA6 4SL.

**Tel 01228 404550**  
**Fax 01228 404551**



Ground Floor Layout



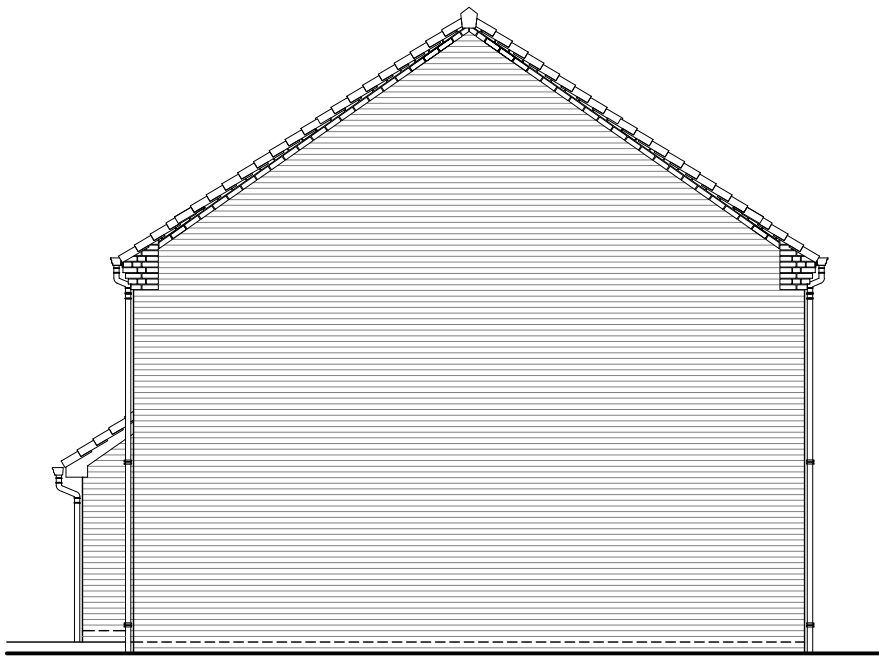
First Floor Layout



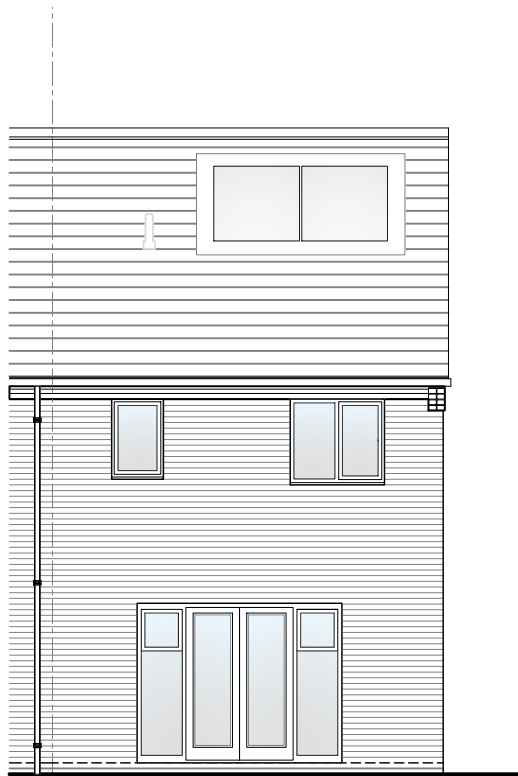
HOUSE TYPE			
HARPER (A20)			
DRAWING			
Planning Layout 1			
DRAWN BY	AA	DATE	16/09/22
CHECKED BY	JB, AH	SCALE	1:100@A3
DWG PACK	A/20.3	DRAWING NUMBER	HPR-PLP1
Revisions		Notes	Date
© <b>Story Homes.</b> Story House, Lords Way, Kingmoor Business Park, Carlisle, Cumbria. CA6 4SL <b>Tel 01228 404550</b> <b>Fax 01228 404551</b>			



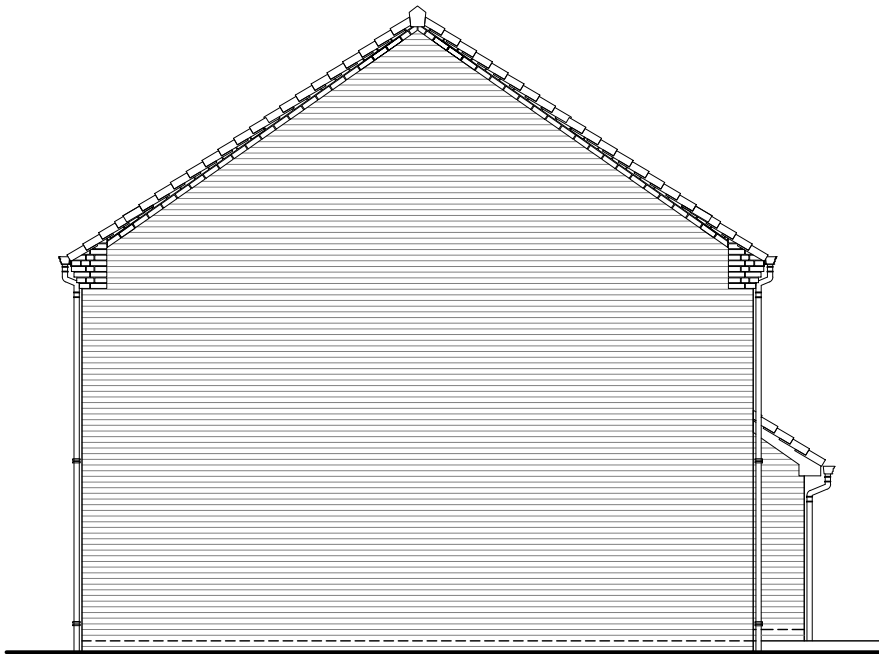
Front Elevation



Left Elevation



Rear Elevation



Right Elevation

NOTES

PV Solar Panels  
Elevations indicate typical arrangement only - number of panels required and location / array to be plot specific. PV panels to be in-roof type.



HOUSE TYPE			
HARPER (A20)			
DRAWING			
Planning Elevation C			
DRAWN BY	AA	DATE	16/09/22
CHECKED BY	JB_AH	SCALE	1:100@A3
DWG PACK	A/20.3	DRAWING NUMBER	HPR-PLE-C
Revisions		Notes	Date
© Story Homes.			
Story House, Lords Way, Kingmoor Business Park, Carlisle, Cumbria. CA6 4SL			
Tel 01228 404550		Fax 01228 404551	