



HARPER (A)

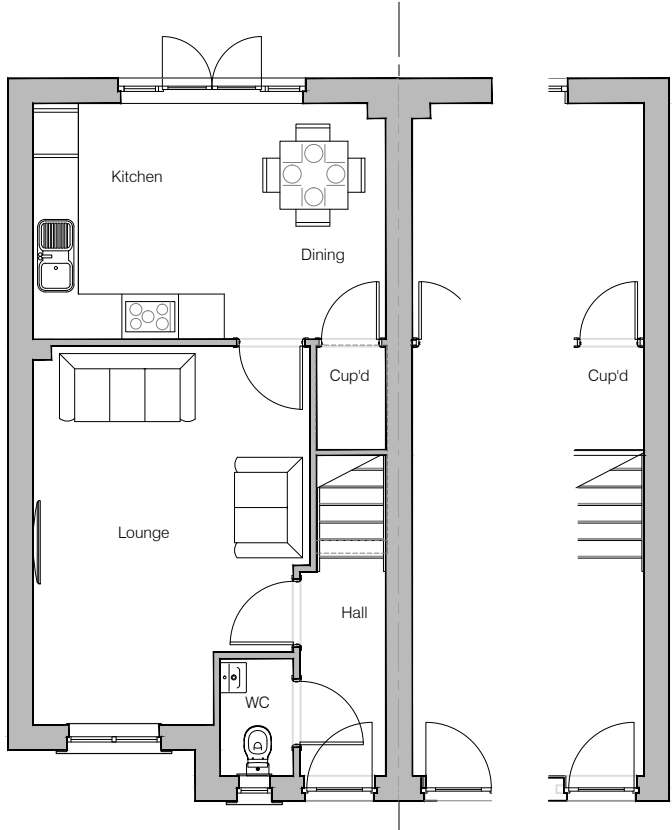
Planning Drawings

GF: 40.47 m2 (435.62 ft2)
FF: 38.96 m2 (419.36 ft2)
TOTAL: 79.43 m2 (854.98 ft2)

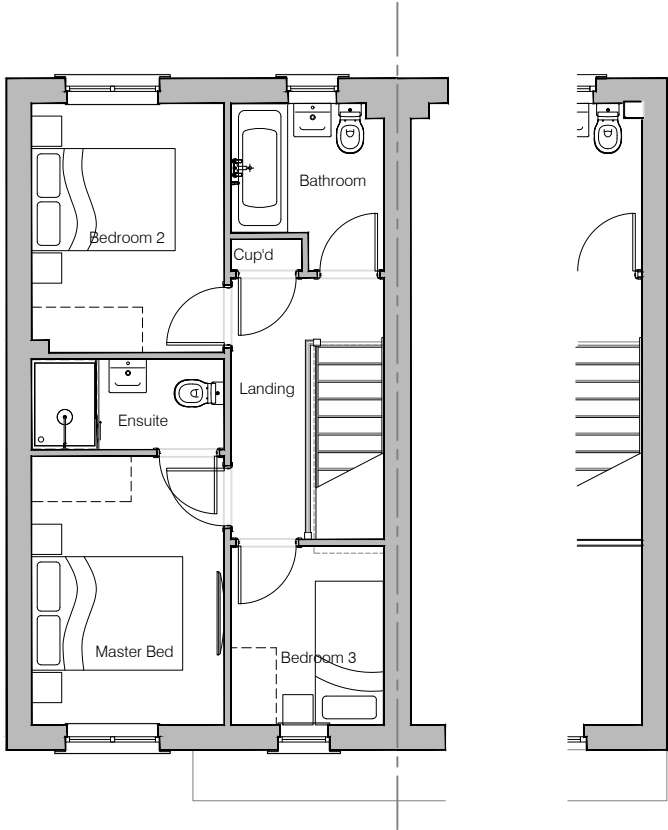
© **Story Homes.**

Story House, Lords Way, Kingmoor Business Park,
Carlisle, Cumbria. CA6 4SL.

Tel 01228 404550
Fax 01228 404551



Ground Floor Layout



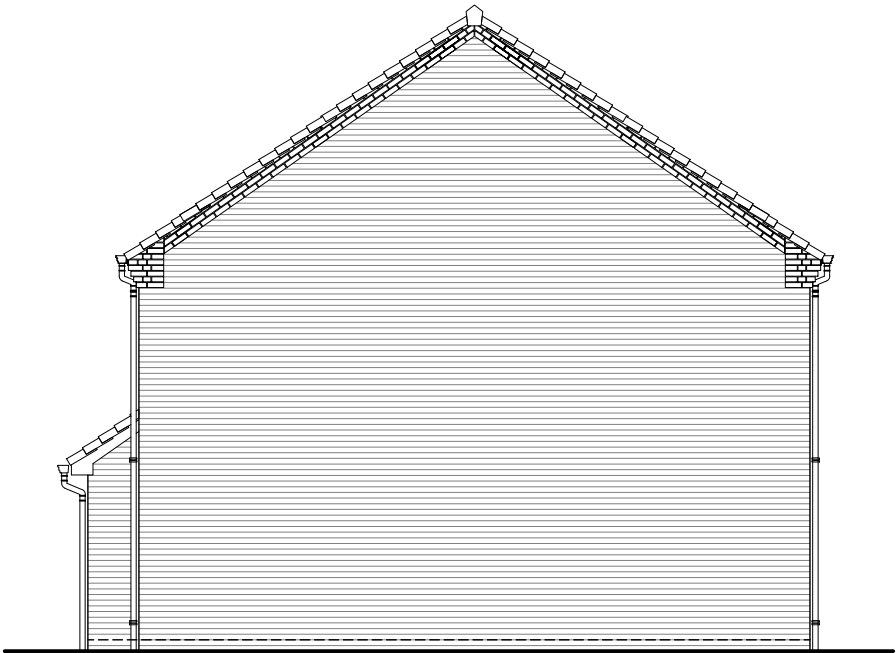
First Floor Layout



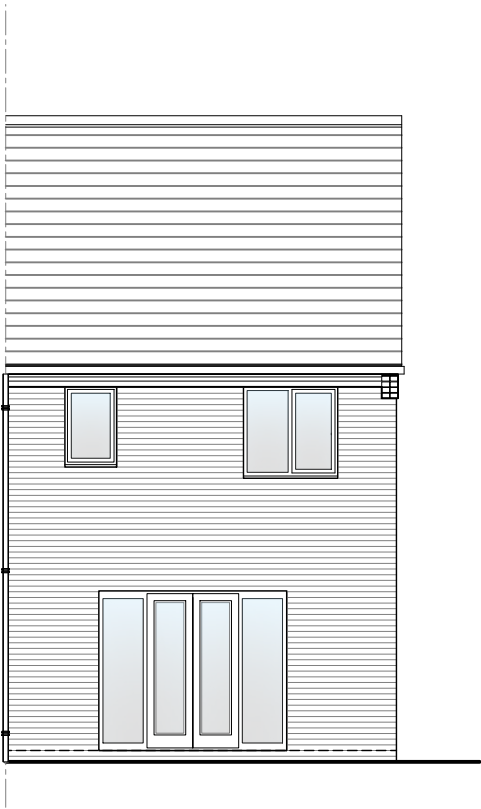
HOUSE TYPE			
HARPER (A)			
DRAWING			
Planning Layout 1			
DRAWN BY	AB	DATE	01/02/19
CHECKED BY	AH	SCALE	1:100@A3
DWG PACK	A/03	DRAWING NUMBER	HPR-PLP1
Revisions		Notes	Date
A		En-Suite shower size amended	17/06/19



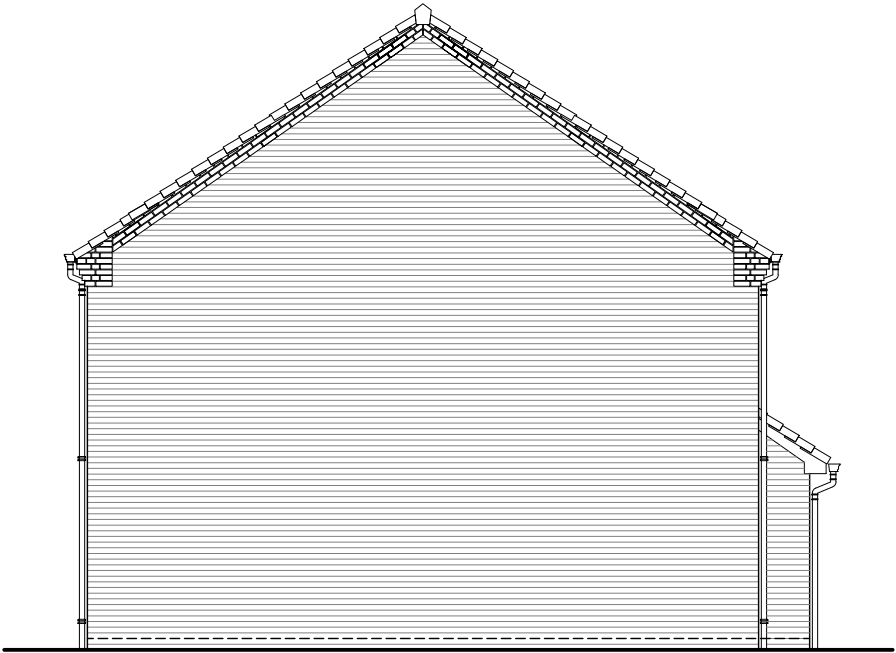
Front Elevation



Left Elevation



Rear Elevation



Right Elevation

NOTES

Key:

bc

-

Denotes brick course

u/s

-

Denotes under side

SD-***_*-***

Denotes Standard Detail

REF-C-***

Denotes H/T Detail in Booklet

MJR

Position of movement joints for RENDERED elevations only.

MJ

Position of movement joints to ALL elevation finishes.
Standard detail SD020-A-003

Movement Joints & bed reinforcement to be constructed in accordance with NHBC standard 6.11.5 and render manufacturers recommendations. Refer to RENDER DETAIL BOOKLET for construction details. Standard detail SD020-A-001

House type Elevation Treatment Drawings to be read in conjunction with drawing ***-C-BAE for standard details & dimensions applicable to all elevation variants.

House type Elevation Treatment Drawings to be read in conjunction with Standard Detail booklet - SD030 Structural Openings for all variable head & cill arrangements.



HOUSE TYPE			
HARPER (A)			
DRAWING			
Planning Elevation C			
DRAWN BY	AB	DATE	01/02/19
CHECKED BY	AH	SCALE	1:100@A3
DWG PACK	A/03	DRAWING NUMBER	HPR-PLE C
		REVISION	B
Revisions	Notes	Date	
A	RWP positions amended Services omitted.	17/06/19	
B		04/06/20	