



HARPER (A)

Planning Drawings

GF: 40.47 m2 (435.62 ft2)
FF: 38.96 m2 (419.36 ft2)
TOTAL: 79.43 m2 (854.98 ft2)

© **Story Homes.**

Story House, Lords Way, Kingmoor Business Park,
Carlisle, Cumbria. CA6 4SL.

Tel 01228 404550
Fax 01228 404551

Planning Layouts & Elevations

[illegible][illegible][illegible]

HOUSE TYPE

HARPER (A)

HARPER (A)

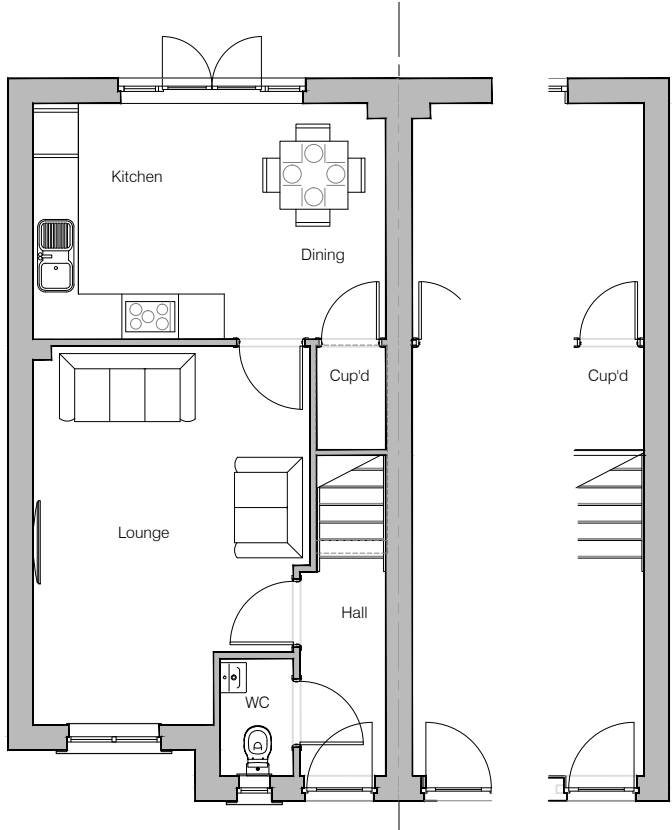
DRAWING

Contents: Planning

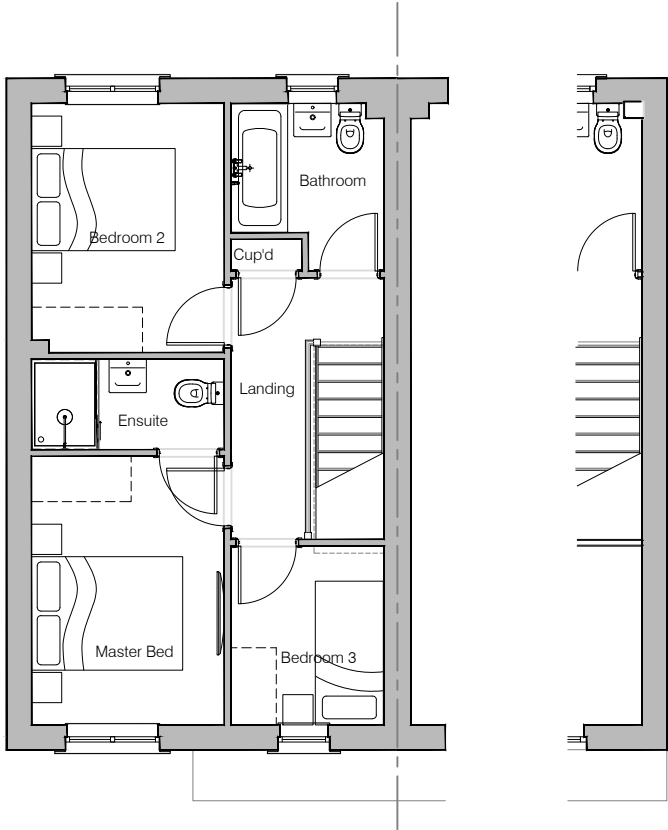
Contents: Planning

DRAWN BY	AB	DATE	01/02/19
CHECKED BY	AH	SCALE	NTS
DWG PACK	DRAWING NUMBER	REVISION	
A/03	HPR-P-CON	B	
Revisions	Notes	Date	
A B	Updated to Pack A/02 issue. Updated to Pack A/03 issue. Drawings PLE1/1 & PLE1/2 amended.	07/06/19 04/06/20	

© Story Homes.
Story House, Lords Way, Kingmoor Business Park,
Carlisle, Cumbria. CA6 4SL
Tel 01228 404550 Fax 01228 404551



Ground Floor Layout



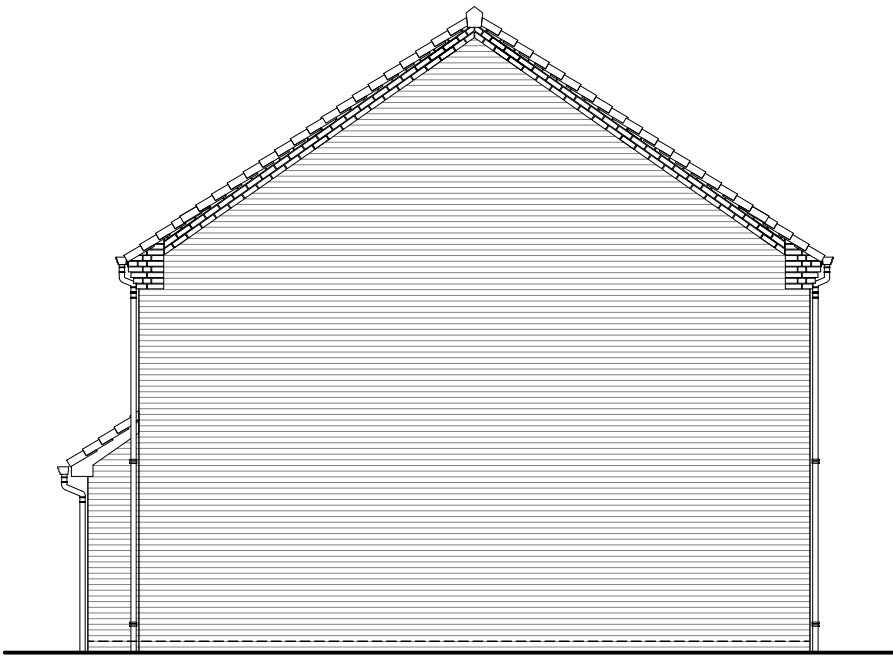
First Floor Layout



HOUSE TYPE			
HARPER (A)			
DRAWING			
Planning Layout 1			
DRAWN BY	AB	DATE	01/02/19
CHECKED BY	AH	SCALE	1:100@A3
DWG PACK	DRAWING NUMBER	REVISION	
A/03	HPR-PLP1	A	
Revisions	Notes	Date	
A	En-Suite shower size amended	17/06/19	
© Story Homes. Story House, Lords Way, Kingmoor Business Park, Carlisle, Cumbria. CA6 4SL Tel 01228 404550 Fax 01228 404551			



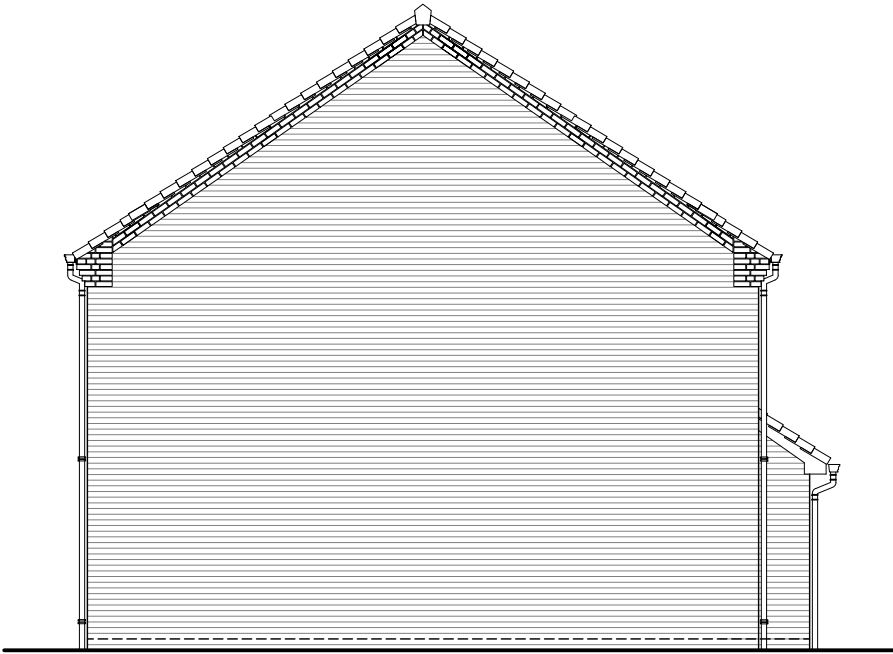
Front Elevation



Left Elevation



Rear Elevation



Right Elevation

NOTES

Key:

bc

-

Denotes brick course

u/s

-

Denotes under side

SD-***_*-***

Denotes Standard Detail

REF-C-***

Denotes H/T Detail in Booklet

MJR

Position of movement joints for RENDERED elevations only.

MJ

Position of movement joints to ALL elevation finishes.
Standard detail SD020-A-003

Movement Joints & bed reinforcement to be constructed in accordance with NHBC standard 6.11.5 and render manufacturers recommendations. Refer to RENDER DETAIL BOOKLET for construction details. Standard detail SD020-A-001

House type Elevation Treatment Drawings to be read in conjunction with drawing ***-C-BAE for standard details & dimensions applicable to all elevation variants.

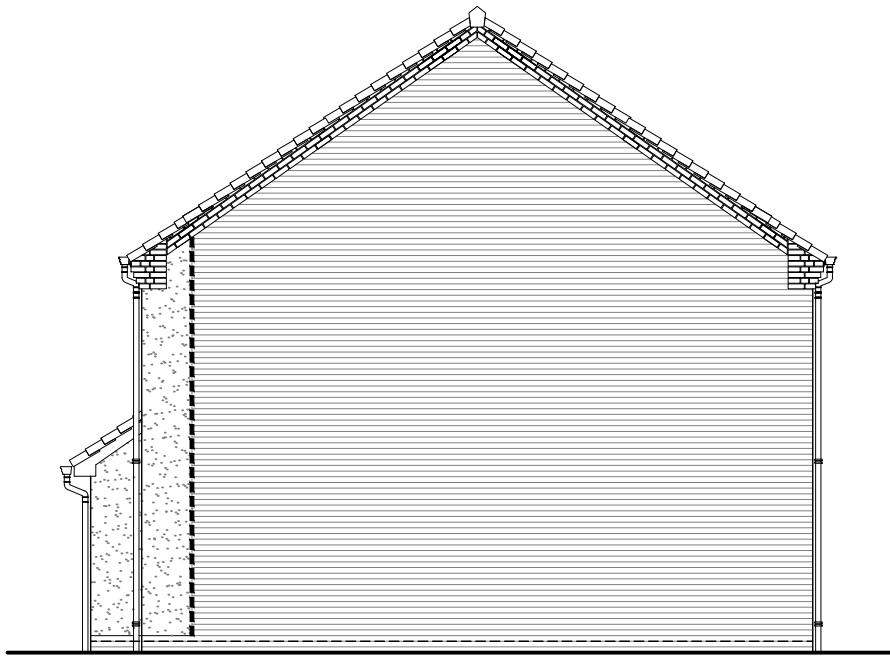
House type Elevation Treatment Drawings to be read in conjunction with Standard Detail booklet - SD030 Structural Openings for all variable head & cill arrangements.



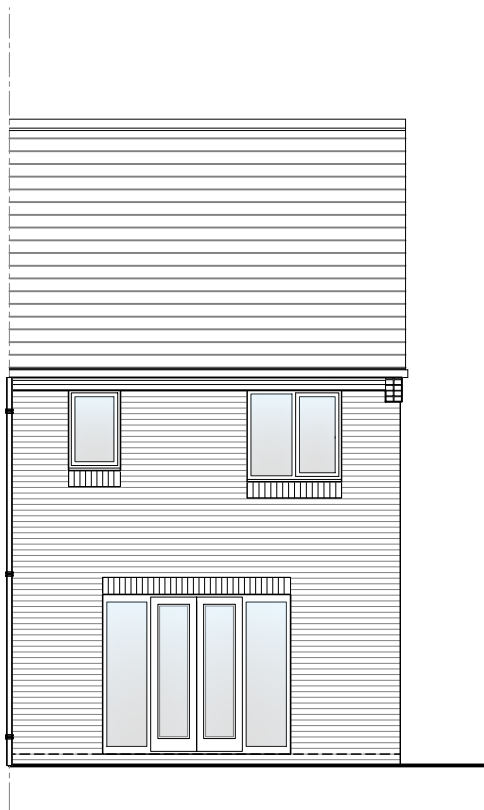
HOUSE TYPE			
HARPER (A)			
DRAWING			
Planning Elevation 1/1			
DRAWN BY	AB	DATE	01/02/19
CHECKED BY	AH	SCALE	1:100@A3
DWG PACK	DRAWING NUMBER	REVISION	
A/03	HPR-PLE1/1	B	
Revisions	Notes	Date	
A	RWP positions amended	17/06/19	
B	Services omitted.	04/06/20	
<div>© Story Homes.</div> <div>Story House, Lords Way, Kingmoor Business Park, Carlisle, Cumbria. CA6 4SL</div> <div>Tel 01228 404550 Fax 01228 404551</div>			



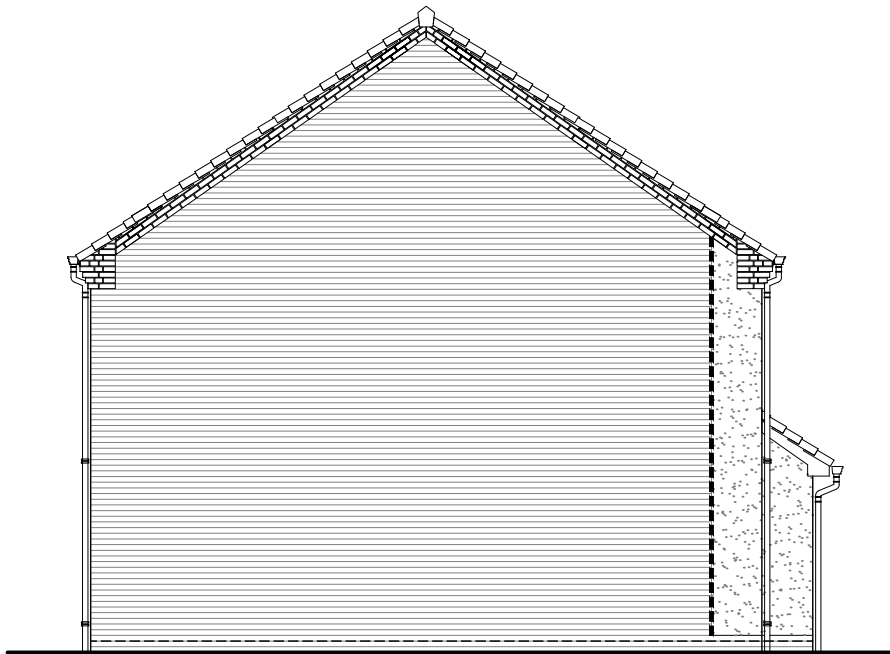
Front Elevation



Left Elevation



Rear Elevation



Right Elevation

NOTES

- Key:
- bc - Denotes brick course
 - u/s - Denotes under side
- SD-***_*-***** Denotes Standard Detail
- REF-C-***** Denotes H/T Detail in Booklet
- MJR** Position of movement joints for RENDERED elevations only.
- MJ** Position of movement joints to ALL elevation finishes. Standard detail SD020-A-003
- Movement Joints & bed reinforcement to be constructed in accordance with NHBC standard 6.11.5 and render manufacturers recommendations. Refer to RENDER DETAIL BOOKLET for construction details. Standard detail SD020-A-001

House type Elevation Treatment Drawings to be read in conjunction with drawing ***-C-BAE for standard details & dimensions applicable to all elevation variants.

House type Elevation Treatment Drawings to be read in conjunction with Standard Detail booklet - SD030 Structural Openings for all variable head & cill arrangements.



HOUSE TYPE			
HARPER (A)			
DRAWING			
Planning Elevation 1/2			
DRAWN BY	AB	DATE	01/02/19
CHECKED BY	AH	SCALE	1:100@A3
DWG PACK	A/03	DRAWING NUMBER	REVISION
		HPR-PLE1/2	B
Revisions	Notes	Date	
A	RWP positions amended Services omitted. Bottom of render finish raised by 75mm.	17/06/19	
B		04/06/20	