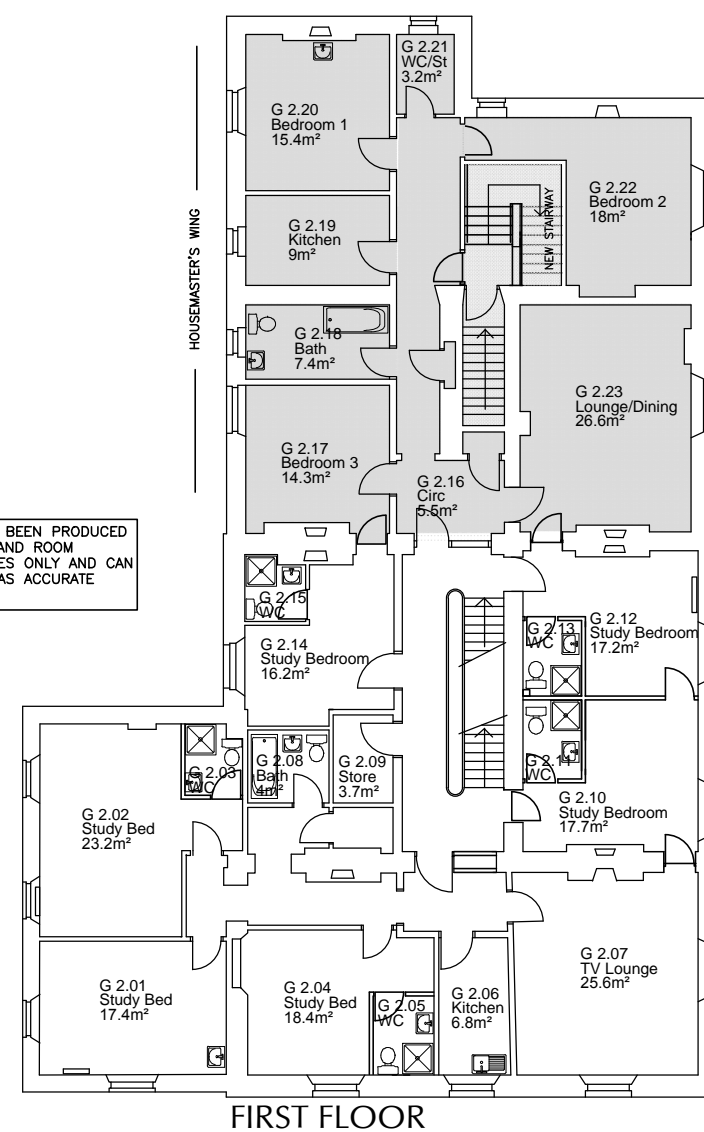


THESE DRAWINGS HAVE BEEN PRODUCED FOR SPACE PLANNING AND ROOM IDENTIFICATION PURPOSES ONLY AND CAN NOT BE RELIED UPON AS ACCURATE MEASURED DRAWINGS.



THESE DRAWINGS HAVE BEEN PRODUCED FOR SPACE PLANNING AND ROOM IDENTIFICATION PURPOSES ONLY AND CAN NOT BE RELIED UPON AS ACCURATE MEASURED DRAWINGS.

# Johnston and Wright

15 Castle Street Carlisle Cumbria CA3 8TD

tel +44 (0) 1228 525161

Chartered Architects

fax +44 (0) 1228 515559

e-mail jw@jwarchitects.co.uk

Project ST. BEES SCHOOL, GRINDAL HOUSE, GROUND/FIRST

Scale 1:200@A4

Date may 2000 Drawn atj

Number Grindal ground & 1st floors

THIS DRAWING IS COPYRIGHT. FIGURED DIMENSIONS ARE TO BE FOLLOWED IN PREFERENCE TO SCALED DIMENSIONS AND PARTICULARS ARE TO BE TAKEN FROM THE ACTUAL WORK WHERE POSSIBLE. ANY DISCREPANCY MUST BE REPORTED TO THE ARCHITECT IMMEDIATELY AND BEFORE PROCEEDING. THIS DRAWING IS NOT TO BE COPIED WITHOUT THE PRIOR PERMISSION OF JOHNSTON AND WRIGHT.