



GRAYSON (A20)

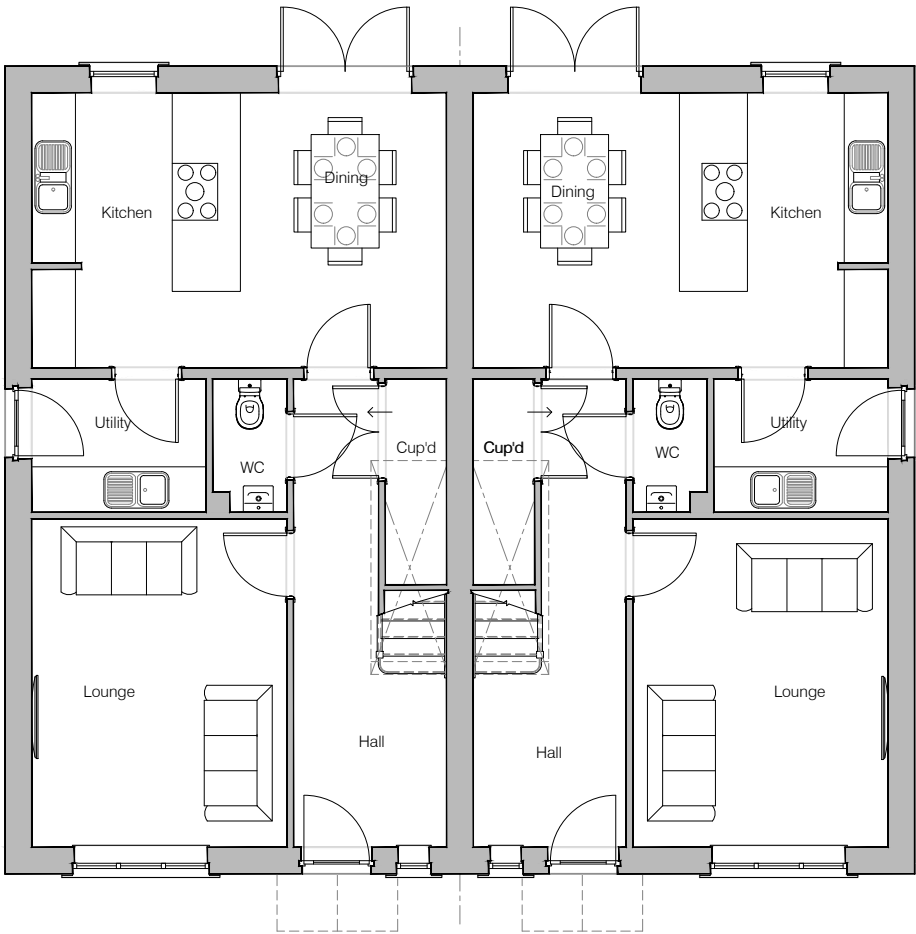
Planning Drawings - Contemporary

GF: 55.54 m2 (597.83 ft2)
FF: 55.54 m2 (597.83 ft2)
TOTAL: 111 m2 (1196 ft2)

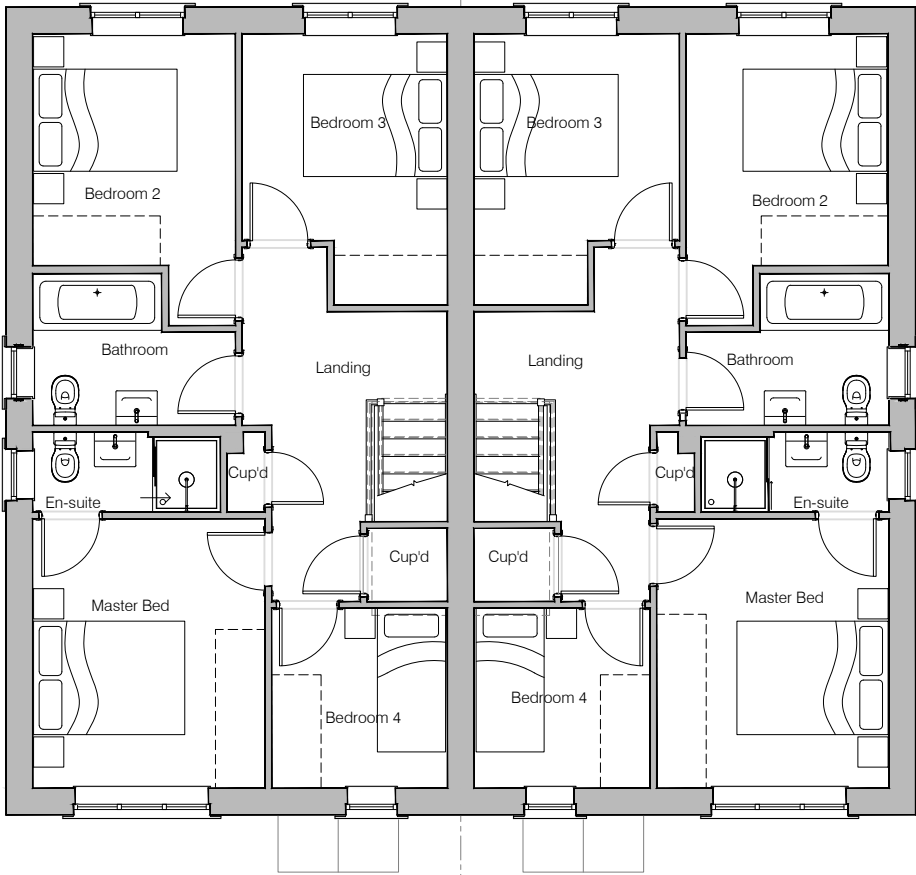
© **Story Homes.**

Story House, Lords Way, Kingmoor Business Park,
Carlisle, Cumbria. CA6 4SL.

Tel 01228 404550
Fax 01228 404551



Ground Floor Layout



First Floor Layout



HOUSE TYPE

GRAYSON (A20)

DRAWING

Planning Layout 1

DRAWN BY	LW	DATE	02/06/23
CHECKED BY	CM, AH	SCALE	1:100 @A3
DWG PACK	DRAWING NUMBER		REVISION
A/20.1	GRN-PLP1		
Revisions	Notes		Date

© **Story Homes.**

Story House, Lords Way, Kingmoor Business Park,
Carlisle, Cumbria. CA6 4SL

Tel 01228 404550**Fax 01228 404551**

NOTES

PV Solar Panels
Elevations indicate typical arrangement only - number of panels required and location / array to be plot specific. PV panels to be in-roof type.



Front Elevation



Left Elevation



Rear Elevation



Right Elevation



HOUSE TYPE

GRAYSON (A20)

DRAWING

Planning Elevation C

DRAWN BY	LW	DATE	02/06/23
CHECKED BY	CM, AH	SCALE	1:100@A3
DWG PACK	DRAWING NUMBER		REVISION
A/20.1	GRN-PLE-C		

Revisions	Notes	Date