

PLANTING SCHEDULE			
TYPE	KEY	SPECIFICATION	NO/SQ.M.
TREES			
All trees rootballed			
Betula pendula	BP	8-10cm RB	N/A
Malus Golden Hornet	MG	8-10cm RB	N/A
Prunus serrulata Amanogawa	PS	8-10cm RB	N/A
FEATHERED TREES			
Malus sylvestris	MSY	2-2.5m	N/A
Prunus avium	PAV	2-2.5m	N/A
SPECIMENS			
Amelanchier lamarckii	AME	C10	N/A
Mahonia Charly	MAH	C10	N/A
Phormium sundowner	PSU	C10	N/A
Photinia Red Robin	PRR	C10	N/A
SHRUBS & HERBACEOUS			
Ceanothus Puget Blue	Cpb	C3	3
Choisya ternata Sundance	Csu	C3	3
Cotoneaster franchetii	Cfr	C3	3
Cotoneaster suecicus Coral Beauty	Ccb	C3	3
Escallonia 'Apple Blossom'	Eab	C3	3
Euonymus fortunei 'Emerald n Gold'	Ego	C2	4
Euonymus fortunei 'Emerald Gaiety'	Eeg	C2	4
Hebe rakaiensis	Hra	C2	3
Hebe Autumn Glory	Hag	C2	3
Hebe Sutherlandii	Hsu	C2	3
Hebe Midsummer Beauty	Hmb	C2	3
Hydrangea petiolaris	Hpe	C3	As Shown
Lonicera Maygreen	Lma	C2	3
Pyracantha Red Cushion	Prc	C3	3
Vinca minor Atropurpurea	Vmi	C2	4
NATIVE BOUNDARY HEDGE INFILL			
	NBH	5m2	% MIX
Prunus spinosa	BR	45-60cm	13
Crataegus monogyna	BR	60-90cm	30
Ilex aquifolium	C3	45-60cm	15
Corylus avellana	BR	60-90cm	30
Sambucus nigra	BR	45-60cm	5
Rosa canina	BR	45-60cm	5
Lonicera periclymenum	C2	60-90cm	2

TOPSOIL CULTIVATION In accordance with BS 3882. Apply glyphosate herbicide prior to cultivation and allow the recommended period before further action. Ensure ground is free from drainage by breaking up subsoil and installation of land drainage as required. Do not work the soil in frozen or waterlogged condition. Remove any debris and stones greater than 50mm from surface and cultivate to suitable till for planting. Rake surface to achieve required level flush with adjacent paving for turf and 50mm below for planting to allow for mulch layer and smooth flowing contours for open space areas without hollows or soft areas. Topsoil depths to be minimum 150mm for grass and 450mm for planting and at least 300mm of suitable subsoil beneath the topsoil layer. Site topsoil to be supplemented with imported topsoil in accordance with BS 3882. Shrub beds in grass areas to be neatly cut to layout shown.

PLANTING Plant material shall conform to the National Plant Specification and be healthy, vigorous specimens, well rooted but not pot bound, free from pests and disease, hardy and undamaged by transport operations in accordance with HTA 'handling and establishing landscape plants'. Planting and turfing to be in accordance with BS 3836 and 4428. Plant species substitutes will be permitted to accommodate availability and to include stock of particular good quality in nursery provided these are of a similar habit, size, colour, value etc and that they are approved in advance by the Landscape Architect. Native species to be local provenance. Bare root and rootballed plants to be planted between November and March. Backfill of planting holes and tree pits to be excavated topsoil with 25% by volume tree and shrub planting compost. Shrub pits to be generally 300 x 300 x 300mm or 75mm wider and deeper than the root spread. Tree pits to be 900 x 900 x 600mm or 150mm wider than the root spread. Stakes to be two 75mm diameter pointed stakes driven until firm and trimmed to 900mm above G.L. with 50 x 100mm crossbar screwed to stakes. Rubber tree cushion nailed to crossbar and rubber tree belting nailed to secure tree. Single 75mm diameter stake for bare-rooted trees with rubber tree belting with spacer. Apply slow release fertiliser (16:10:10) at rate of 100g/sq.m. to planting areas and 250g per tree. Thoroughly water planting.

PLANTING DENSITIES/ SETTING OUT Refer to the Planting Schedule for densities. Where a bed is indicated as mixed species on the plan, the area should be divided equally between the species shown and the relevant density for that species applied to that proportion of the bed. Taller species to the rear of the bed and smaller species to the front planted in bold groups of single species and not mixtures unless clearly requested on the plan annotations.

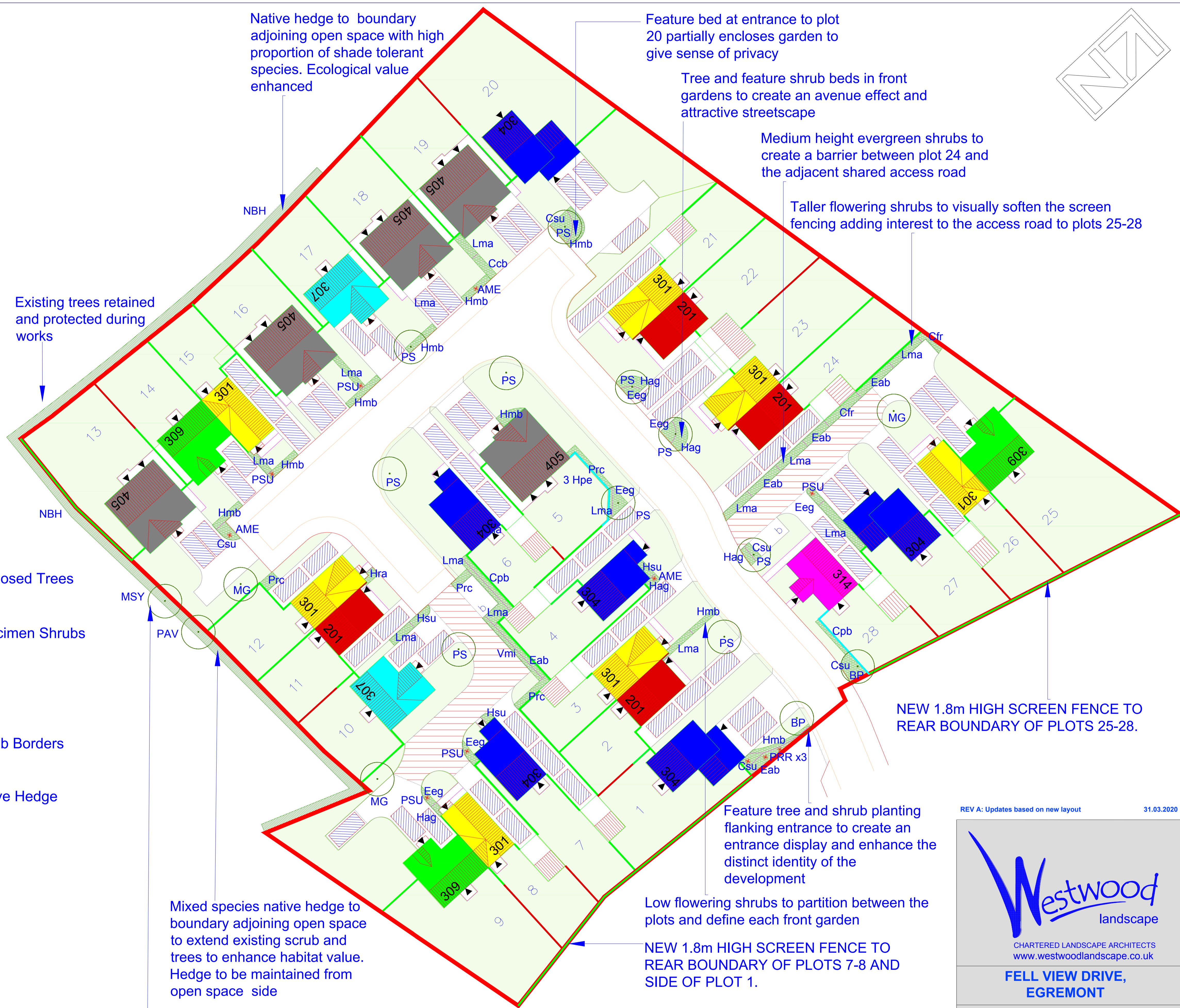
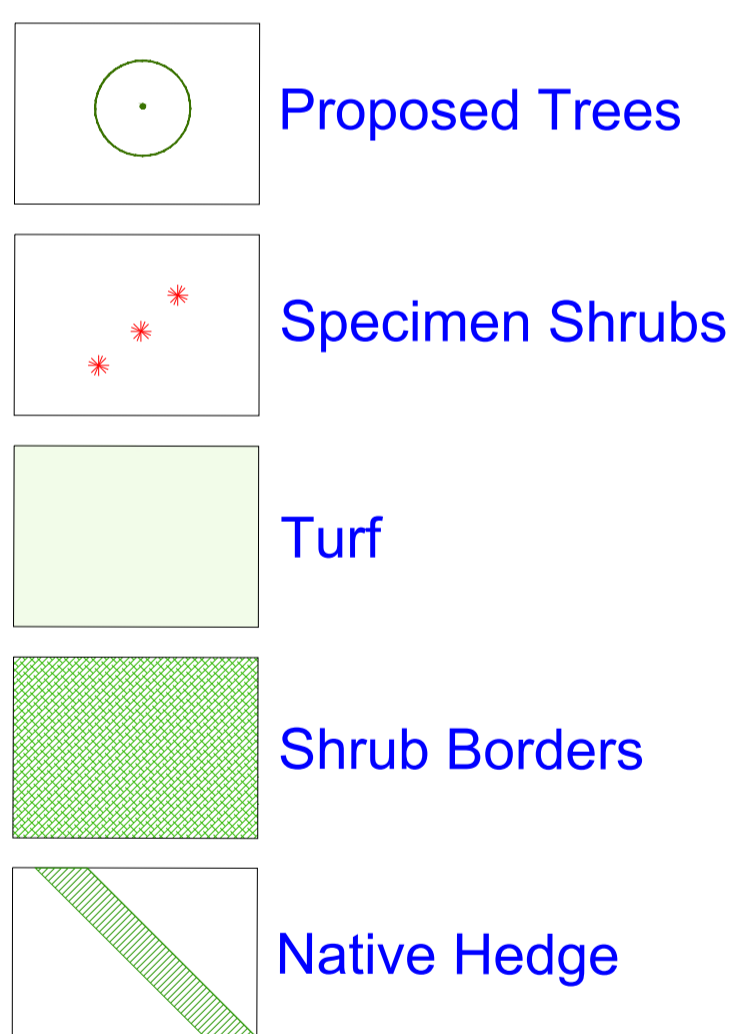
TREE RABBIT GUARDS If rabbit activity is noted in the area and guarding is authorised each bare-rooted native plant hedge plant to receive a 12/14 weight 900mm cane and 90cm clear spiral guard. Trees to receive 90cm spiral guard. If extensive rabbit activity is observed rabbit fencing to ornamental areas will be required as directed by the Landscape Architect.

MULCH Spread 50mm layer of general purpose bark mulch, free from large sticks, and debris over all shrub areas, 800mm wide strips for hedging and 800mm diameter circles for tree pits in grass with neatly trimmed edge.

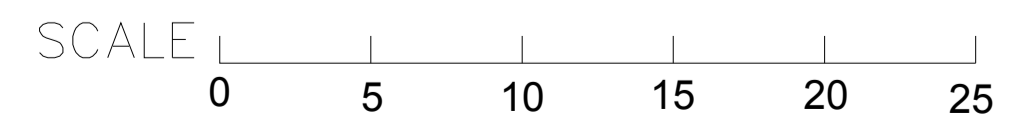
TURFING Following cultivation preparation specified above supply and lay Rolawn Medallion turf or similar approved with staggered joints close butted to uniform levels to finish 25mm above adjacent paving levels once well tamped down. Use sharp sand spread on surface to achieve fine tuning of levels. Thoroughly soak turf on completion and ensure regular watering is arranged until the turf has rooted. Do not turf in waterlogged or frozen conditions.

SEEDING AMENITY GRASS. Following cultivation preparation specified above apply Cropwise low maintenance amenity mix or similar approved at a rate of 35gms/ sq.m. and roll with quad or hand drawn ballast grass roller. Apply water with sprinkler hose in dry conditions to ensure germination. Levels to be flush with adjacent paving following firming and settlement of topsoil. Further stone-picking, top-dressing and re-seeding of bare patches to ensure uniform, level grass is established. Re-roll as required at first cut stage.

LANDSCAPE MAINTENANCE. Any plants which fail within 5 years to be replaced in the season following failure to the original specification. Check and adjust stakes and ties every month, and remove stakes in year 5 when trees are suitably stable. Prune trees and shrubs once each year - formative prune to encourage good habit. Apply fertiliser once in Spring each year to grass 40gms/ sq.m. Apply fertiliser once in Spring each year to shrubs 20gms/ sq.m. - Osmocote slow release. Top up bark mulch to 50mm depth annually. Check for pests and diseases - treat as required. Water as required all landscape areas. Mow grass 18 times annually and remove arisings, trim edges. Apply selective herbicide and moss killer to grass as required. Re-seed, top dress and aerate lawns as required to maintain grass in good condition. Cut and rake off wildflower grass twice annually. Collect litter from all landscape areas monthly. Apply Glyphosate herbicide to hard paved areas as required.



Small native hedgerow trees in the new hedge to screen the new housing at the gap between existing trees



REV A: Updates based on new layout 31.03.2020

Westwood landscape
 CHARTERED LANDSCAPE ARCHITECTS
 www.westwoodlandscape.co.uk
FELL VIEW DRIVE, EGREMONT
LANDSCAPE PLAN
 DRAWING WWLP-0-A1 DATE: 29.11.19
 SCALE: 1:250 @ A1