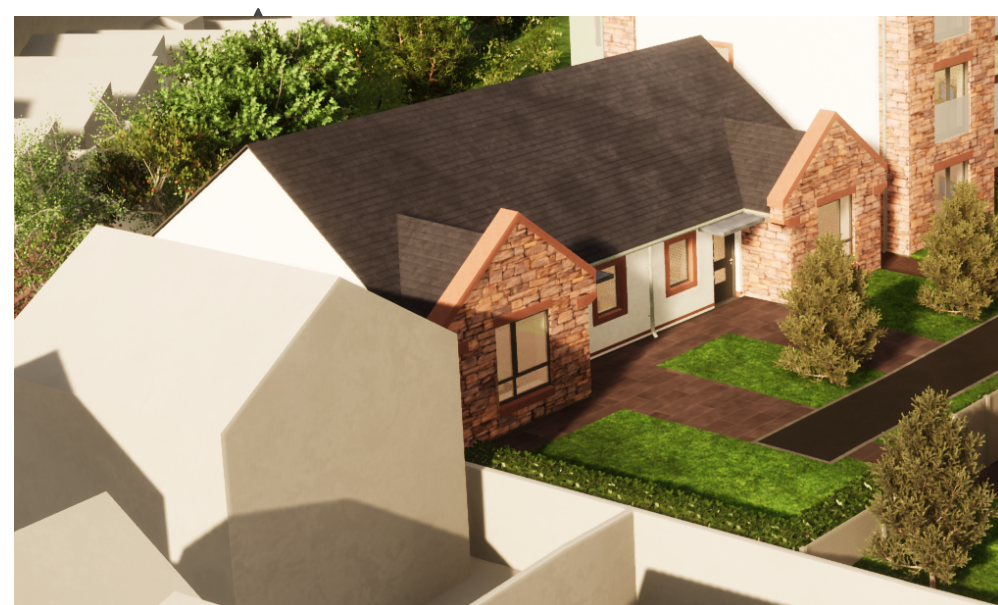


Bungalow Features.

- 1 – Level access provided into dwelling
- 2 – 1500mm turning circle provided on entrance
- 3 - Bathroom designed as wet room
- 4 – Store designed for conversion to possible future visitor Wc. Knock through panel provided to connect through from Living room. Visual connection in later dementia stages to reduce accidents, promote independence and relieve stress HAPPI principles
- 5 – Direct access provided from bedroom to bathroom, future hoist route option
- 6– Bedrooms sized in accordance with Building Regs



Internal Floor Area - 61msq

Bungalows: Floor Plan
Scale: 1:50

-
- The diagram illustrates the proposed future layout for the main living room, showing various access points and storage areas. The layout is divided into several sections, each with a corresponding color-coded bar and a description of its function.
- Future route for hoist to allow access from the main bedroom:** Indicated by a red dashed line with arrows at both ends, representing a bidirectional path.
 - Future 'knock-through' panel to allow additional door access from bedroom to bathroom:** Indicated by a yellow solid bar.
 - Future living room to WC access / vision line:** Indicated by a blue dashed line with an arrow pointing left, representing a one-way path or vision line.
 - Storage room to have possible future adaptability into a small visitor WC in line with HAPPI principles. Knock through panel provided to facilitate access from main living room in line with Living well with Dementia panel to allow additional door access from bedroom to bathroom:** Indicated by a blue solid bar.

TYPE A BUNGALOW - M4 (2) Accessible & Adaptable

North

Scale



Office Liverpool Nottingham Newcastle Preston

Liverpool

Address

98-100 Duke Street

Post Code

L1 5AG

Te

0151 708 8944

Website

www.hlpdesign.com

Drawing Title

2B3P Bungalow

Project

Distington Big Local

Client

Big Local

Big Luca
Scales @ A2

1:50, 1:100

Job Number

2808

Date
03.12.2020

00.12.
Drg. No - Revision

GA 100 19

Drawn

ALR

ALIX

ANNING

Bungalows: Roof Plan



Halsall Lloyd
Partnership
ARCHITECTS & DESIGNERS

Rev.	Date	Description	Drwn
------	------	-------------	------

Note :