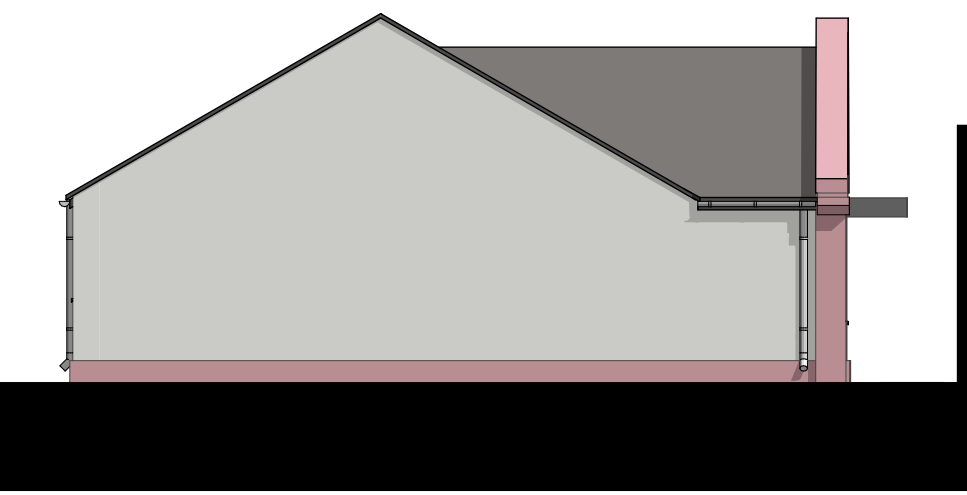
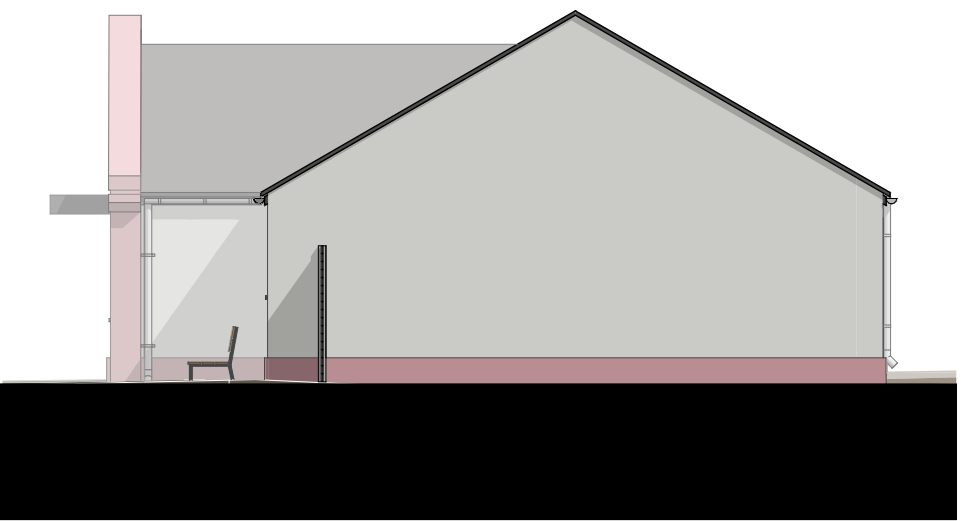


- Additional Dementia Provision.**
- 1 - Bathroom oversized to accommodate assisted bathing and wheelchair in accordance with building regulations
 - 2 - Additional space provided to accommodate utility space comprising washer and drier to facilitate easy access / use for carer
 - 3 - Bathroom designed as wet room – alternative layout possible to accommodate raising bath dependant on individual needs.
 - 4 - Knock through panel provided to connect through from Living room. Visual connection in later dementia stages to reduce accidents, promote independence and relieve stress
 - 5 - Direct access provided from bedroom, future hoist root option
 - 6 - Main bedroom position at the rear of the bungalow. Patio doors facilitate easy access allowing connection to garden. (health and well being benefits) end of life consideration.
 - 7 - Door and half access to bedroom facilitates hospital bed access (end of life considerations). Additional charging point
 - 8 - Open plan Living space connecting through to dining / kitchen
 - 9 - Simplicity of layout enables easy navigation and memory retention of space

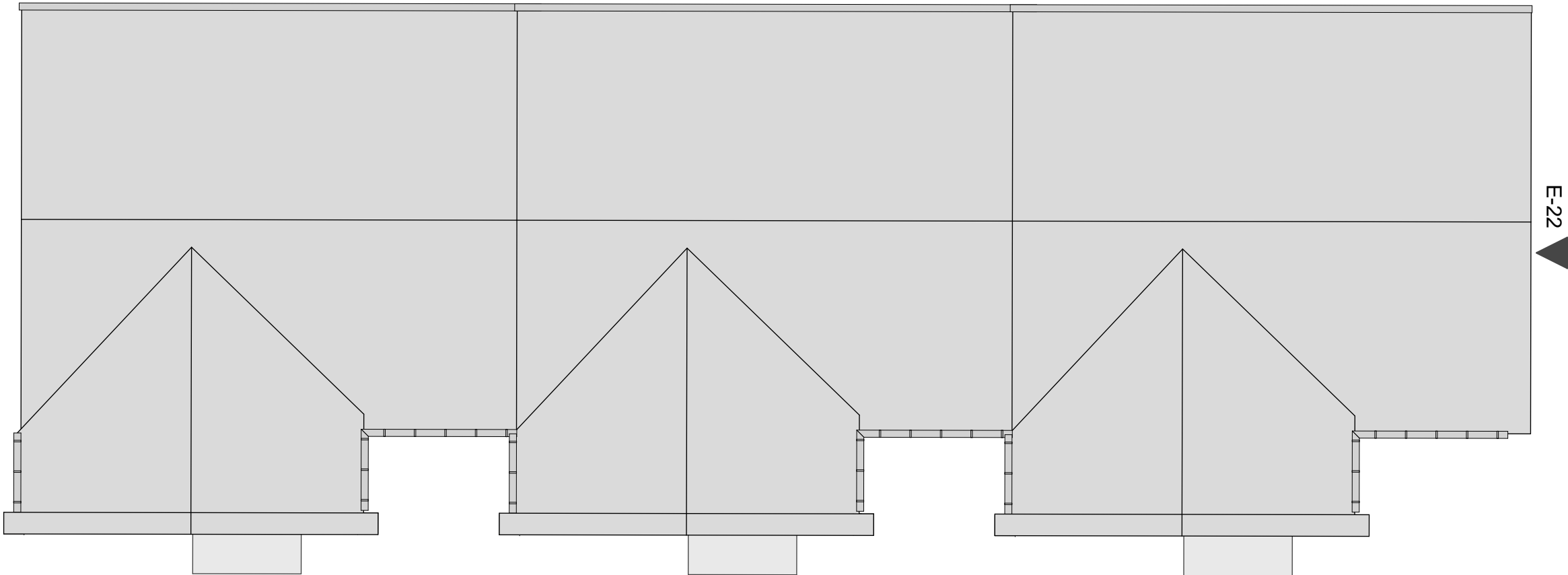


Bungalows: Side Elevation (South)
Scale: 1:50

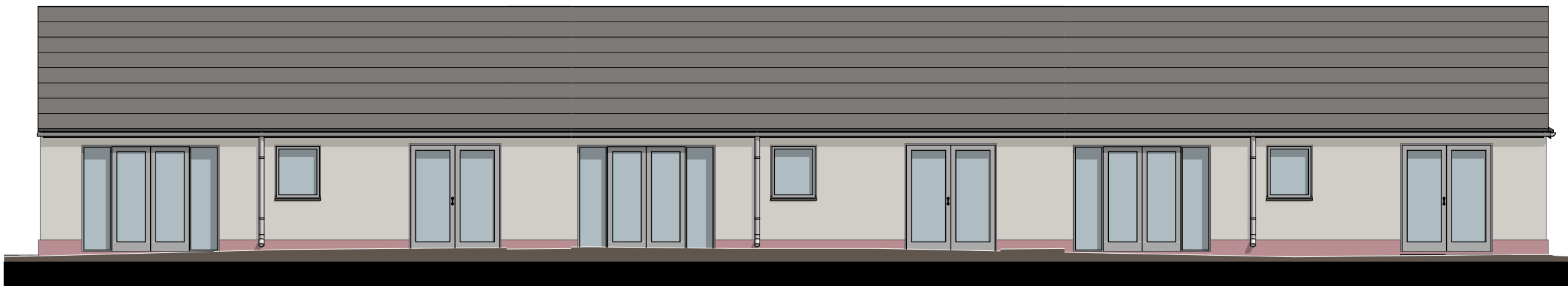


Bungalows: Side Elevation (North)
Scale: 1:50

Bungalows: Roof Plan
Scale: 1:100



E-12 ▲



Bungalows: Rear Elevation
Scale: 1:100



Bungalows: Front Elevation
Scale: 1:100

Internal Floor Area - 76msq

Dementia Design Bungalows: Floor Plan
Scale: 1:50

- Future route for hoist to allow access from the main bedroom
- Future 'knock-through' panel to allow additional door access from bedroom to bathroom
- Future living room to WC access / vision line

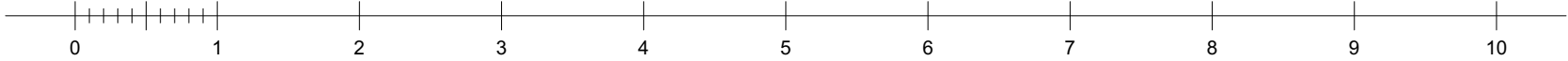


TYPE C BUNGALOW - M4 (3) Wheelchair User Dwelling with Additional Dementia Provision

Revision			Description	Date	By	Check
Rev	No	Date				
A	09 03 21		Revised bungalow design and other planning amendments.		RN	
Note : Do not scale off this drawing. Do not rely on this drawing for purposes other than the recorded 'Status'. Constructors must be familiar with the client's building asbestos register ahead of facilitating any work contained on this drawing. This drawing is copyright of HLP Architects & Designers & must not be reproduced unless specifically agreed in writing.						

North

Scale



Drawing Title		
Liverpool	2B3P Bungalow - Dementia Design	
Address	Project	
98-100 Duke Street	Distinction Big Local	
Post Code	Client	
L1 5AG	Big Local	
Tel	Date	Drawn Check
0151 708 8944	1:100, 1:50	
Website	Job Number	Dwg. No - Revision Status
www.hlpdesign.com	2808	GA_100_13A
	PLANNING	

