



## FULFORD A20 M4(2)

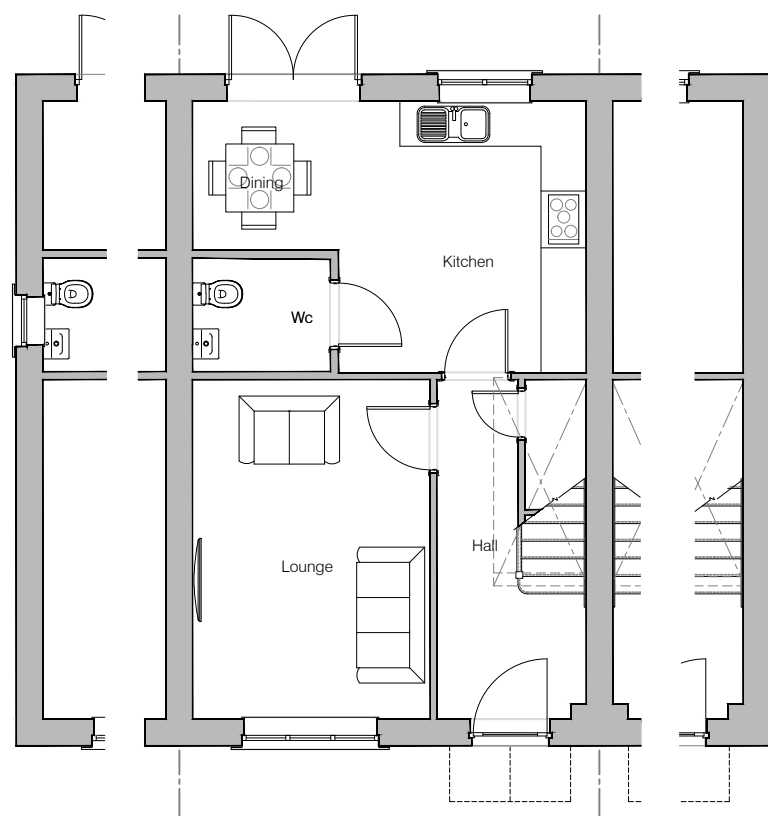
### Planning Drawings

GF: 43.25 m2 ( 465.54 ft2 )  
FF: 42.85 m2 ( 461.23 ft2 )  
TOTAL: 86 m2 ( 926 ft2 )

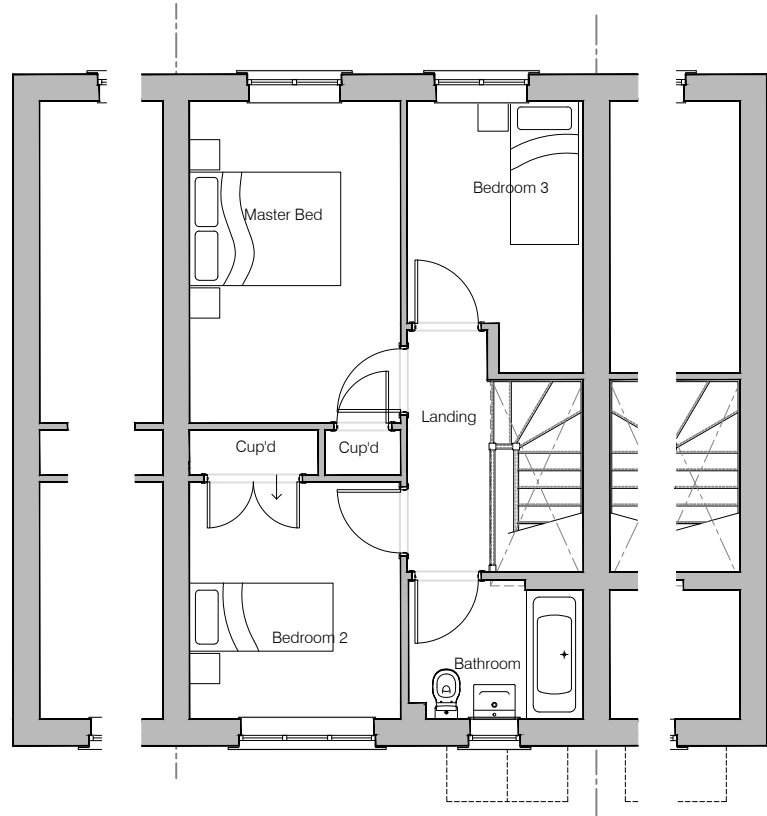
© **Story Homes.**

Story House, Lords Way, Kingmoor Business Park,  
Carlisle, Cumbria. CA6 4SL.

**Tel 01228 404550**  
**Fax 01228 404551**



Ground Floor Layout



First Floor Layout

NOTES	
Technical housing standards – Nationally described space standard	
Area (m <sup>2</sup> )	84.76
Designation	3B 4P
Bed 1	11.90
Bed 2	8.77
Bed 3	7.58
Bed 4	
Bed 5	-
Storage (m <sup>2</sup> )	2.74



HOUSE TYPE  
FULFORD A20 M4(2)

DRAWING  
Planning Layout 1

DRAWN BY	AA	DATE	16/09/22
CHECKED BY	JB, AH	SCALE	1:100@A3
DWG PACK	A/20	DRAWING NUMBER	FFD-PLP1
		REVISION	-

Revisions	Notes	Date



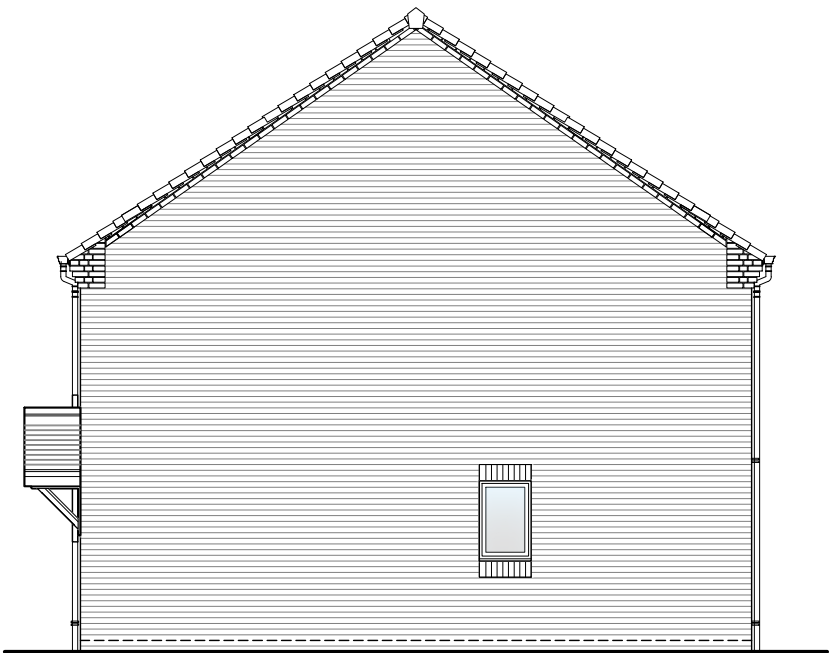
Front Elevation



Left Elevation



Rear Elevation



Right Elevation

NOTES  
PV Solar Panels  
Elevations indicate typical arrangement only - number of panels required and location / array to be plot specific. PV panels to be in-roof type



HOUSE TYPE  
**FULFORD A20 M4(2)**

DRAWING  
**Planning Elevation 1/1**

DRAWN BY	AA	DATE	16/09/22
CHECKED BY	JB, AH	SCALE	1:100@A3
DWG PACK	A/20	DRAWING NUMBER	FFD-PLE1/1
		REVISION	-

Revisions	Notes	Date