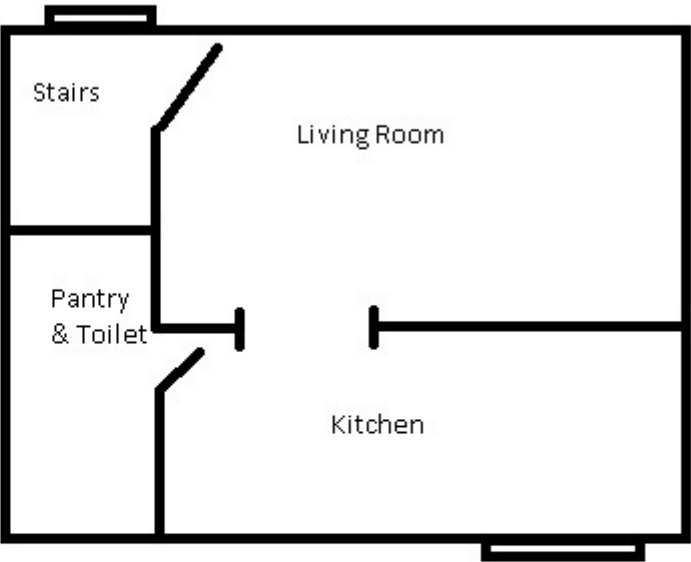
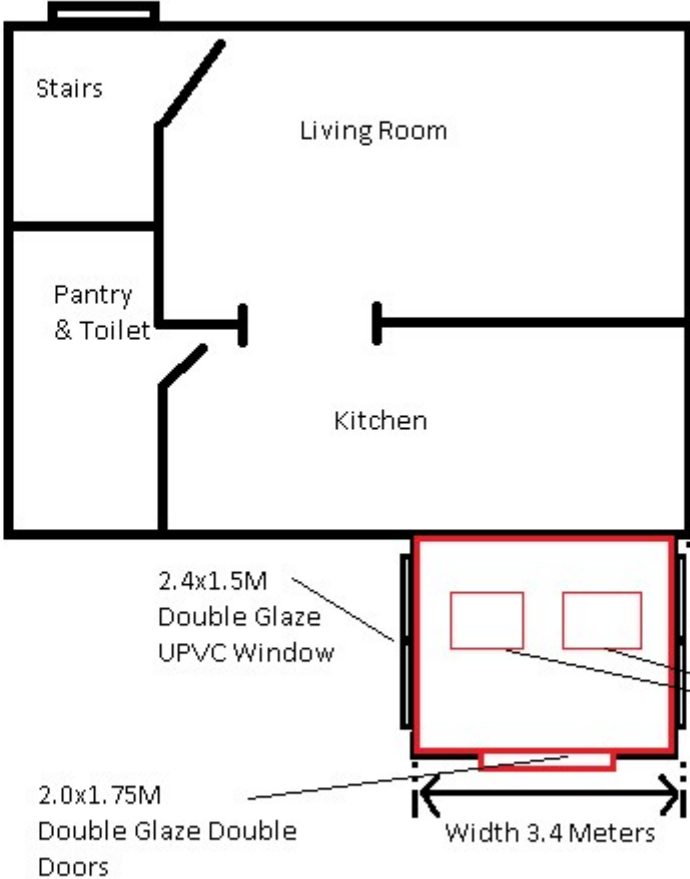


Existing Floor Plan



Proposed Floor Plan



Materials for new ext
Roof: Tiles to match exist
Elevations: To match exist
Windows and doors: White
Double Glazed
2x Velux windows in roof

2.4x0.6 M Double Glaze
UPVC Window

Length 4.0 Meters

X2
1.14x0.7M
Velux
Windows
SK07

2.4x1.5M
Double Glaze
UPVC Window

2.0x1.75M
Double Glaze Double
Doors

Width 3.4 Meters