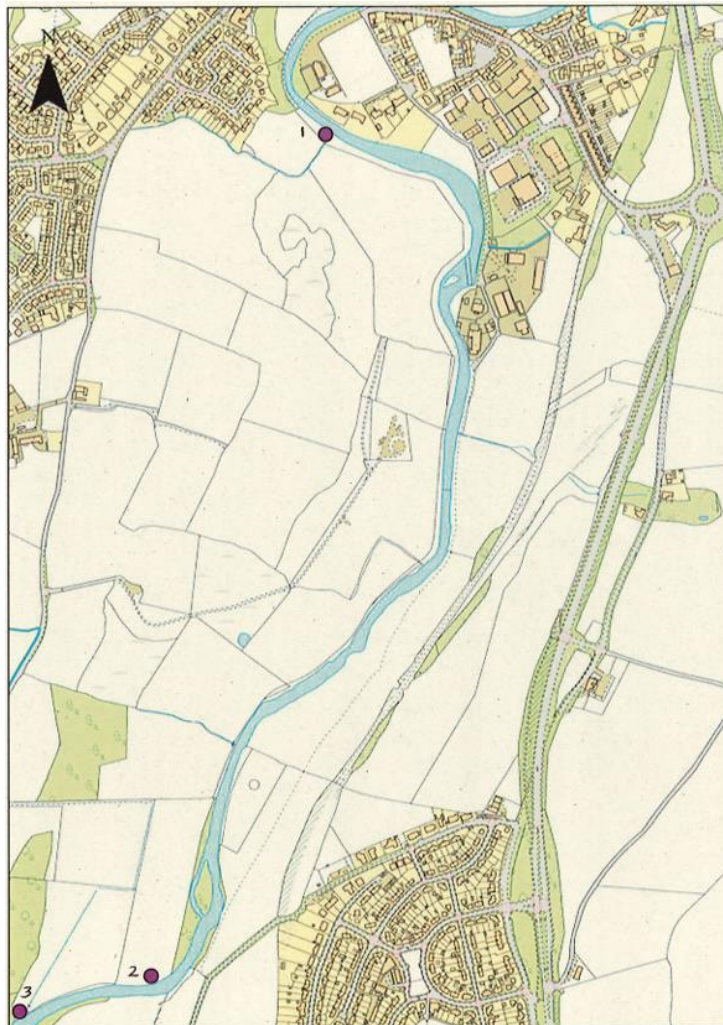




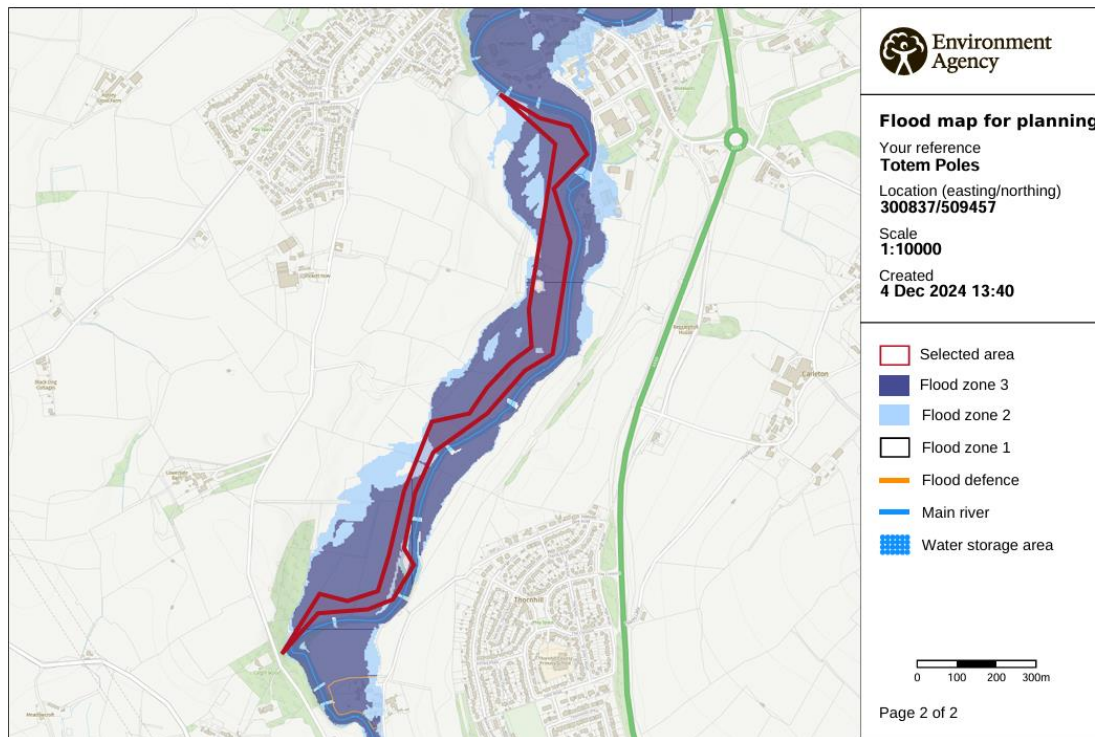
Flood Risk Assessment for Planning Application 4/24/2374/0F1

Installation of Three Totem Poles on the River Ehen, Egremont

The proposal is to install three totem poles forming part of an art trail at the locations shown by the purple dots on the map below, along the River Ehen, south of Egremont.



The Flood Risk Maps published by the Environment Agency show the site is within Flood Zone 3. Flood map reproduced below.



The totem poles are 20cm in diameter each mounted on a 40cm x 40cm paving slab, concreted into the ground. The poles are each 157.5 cm tall and comprise of six timber sections separated by thrust needle roller bearings allowing each section to spin independently on a central spindle.

The poles will not affect flood water as the area of the pole is insignificant in comparison to the length of the riverbank and will allow water to flow unimpeded.

The concrete used to fix the paving slab bases to the ground will be non-lime concrete and the natural timber products used for the poles will not have any effect or cause leaching into the river in the event of flooding.