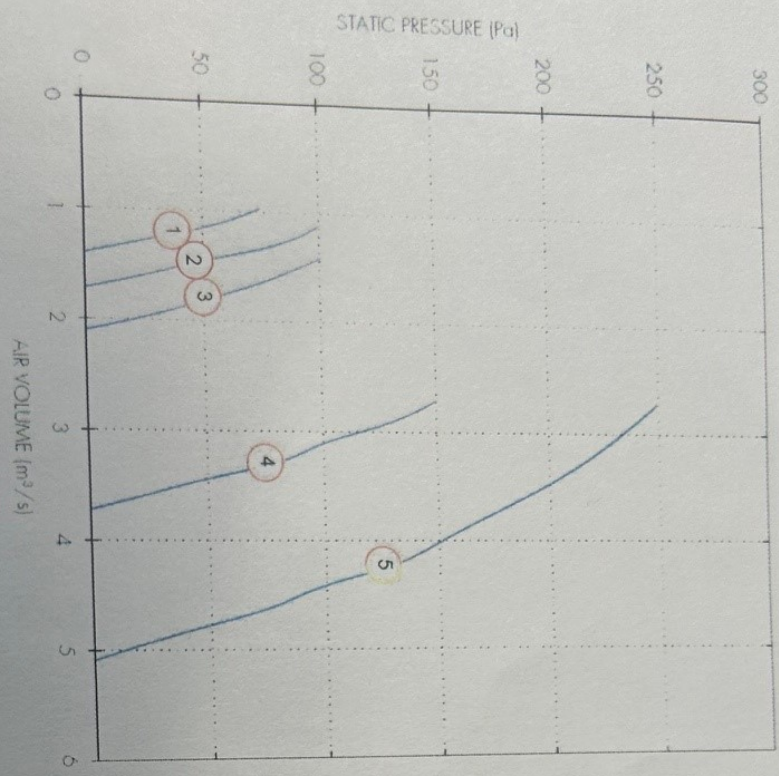
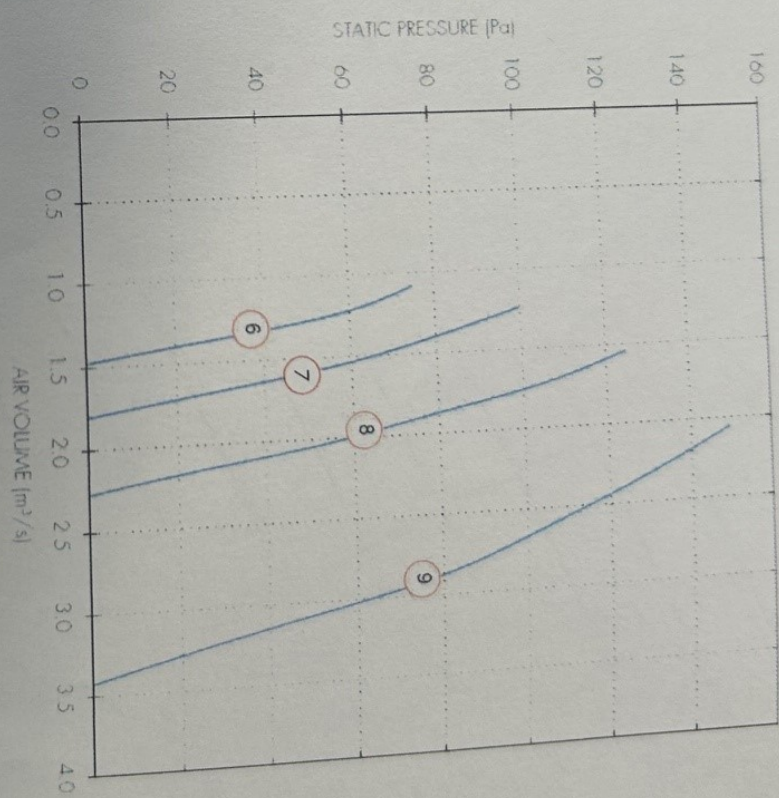


Performance Guide

400 to 630 dia. - 1 Phase - 4 Pole



400 to 560 dia. - 3 Phase - 4 Pole



Dia.	Motor Phase	Stock Ref	Poles	r.p.m	IP Rating	Curve Ref.	0	50	100	150	200	250	Motor kW	S.C. Amps	FLC Amps	DB(A) @ 3m
							$m^3/s @ Pa$									
400	1	ESP40014	4	1350	IP54	1	1.4	1.16					0.29	2.4	1.45	56
450	1	ESP45014	4	1370	IP54	2	1.72	1.46	1.11				0.36	3.6	1.6	61
500	1	ESP50014	4	1290	IP54	3	2.1	1.82	1.41				0.51	4.3	2.3	55
500	1	ESP56014	4	1320	IP54	4	3.72	3.44	3.11	2.71			1.35	9.3	6	63
560	1	ESP63014	4	1320	IP54	5	5.09	4.77	4.41	4.02	3.47	2.72	2.2	28	9.9	70
630	1	ESP63014	4	1320	IP54	5	5.09	4.77	4.41	4.02	3.47	2.72	2.2	28	9.9	70
400	3	ESP40034	4	1350	IP54	6	1.48	1.27					0.26	2.1	0.56	51
450	3	ESP45034	4	1380	IP54	7	1.8	1.59	1.24				0.36	2.6	0.8	56
450	3	ESP45034	4	1380	IP54	7	1.8	1.59	1.24				0.55	4.2	1.05	58
500	3	ESP50034	4	1380	IP54	8	2.27	2.05	1.75				1.25	7.7	2.2	70
560	3	ESP56034	4	1220	IP54	9	3.43	3.08	2.67	2.05						

For fans wired to reverse run, duty reduced by 30%.

Sound Power Level Spectra dB (ref 10⁻¹² Watts)

value