

**External Materials 4/23/2325/0B1 LAND ADJACENT TO THORNLEA, CARLETON, EGREMONT**

**Roof Materials –**

**Tiles** - Marley Edgemere Roof Tiles (JT Atkins, Whitehaven)

[https://www.jtatkinson.co.uk/marley-edgemere-interlocking-slate-330x420mm-smooth-grey?gad\\_source=1&gclid=EAlaIQobChMIgvj827fBgwMVX5NQBh1y9gP3EAQYASABEgKIIPD\\_BwE](https://www.jtatkinson.co.uk/marley-edgemere-interlocking-slate-330x420mm-smooth-grey?gad_source=1&gclid=EAlaIQobChMIgvj827fBgwMVX5NQBh1y9gP3EAQYASABEgKIIPD_BwE)



**Coping stones/coins** – St Bees Red Sandstone (Moorhouse and Sons Ltd)

<http://www.moorhouseandsons.co.uk/>



### **External facing bricks –**

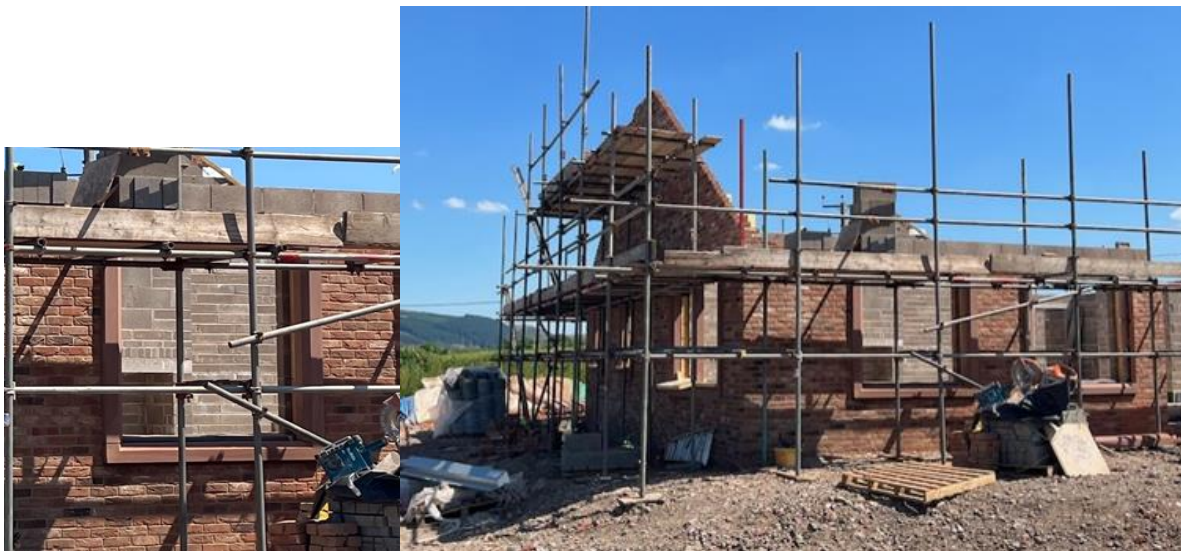
**Bricks** - 65mm Desimpel Hathaway Brindled Facing Brick (JT Atkins, Whitehaven)

<https://www.jtatkinson.co.uk/desimpel-hathaway-brindled-facing-brick>



**Window/door and coping stones surrounds and finish** - Moorhouse local St Bees red sandstone (Moorhouses and Sons Ltd, Bigrigg)

<http://www.moorhouseandsons.co.uk/>



## **Dormers –**

Roof – Marley Edgewear tiles

[https://www.jtatkinson.co.uk/marley-edgemere-interlocking-slate-330x420mm-smooth-grey?gad\\_source=1&gclid=EAlaIQobChMIgvj827fBgwMVX5NQBh1y9gP3EAQYASABEgKIIPD\\_BwE](https://www.jtatkinson.co.uk/marley-edgemere-interlocking-slate-330x420mm-smooth-grey?gad_source=1&gclid=EAlaIQobChMIgvj827fBgwMVX5NQBh1y9gP3EAQYASABEgKIIPD_BwE)



Dormer sides/front finish -

K Rend Silicone TC30 Colour Causeway

[https://www.superiorrendersupplies.co.uk/k-rend-silicone-tc15-25kg-----all-colours-in-stock~615?gad\\_source=1&gclid=EAlaIQobChMIo7TX\\_fbBgwMV4JRoCR1qNwJYEAQYASABEgIXw\\_D\\_BwE](https://www.superiorrendersupplies.co.uk/k-rend-silicone-tc15-25kg-----all-colours-in-stock~615?gad_source=1&gclid=EAlaIQobChMIo7TX_fbBgwMV4JRoCR1qNwJYEAQYASABEgIXw_D_BwE)



## Windows/Doors and Bifold Doors –

### Express Bifold

<https://www.expressbifolds.co.uk/our-products/bi-folding-doors/xp-view/>

### SPECIFICATION

#### Aluminium Casement

Colour Matt Black Grey Fine Textured RAL 9005

- Slender profiles for attractive aesthetics
- Surpasses all requirements of document L
- Adjustable rebates within the side jambs allowing 8mm of adjustment
- Fully tested to stringent PAS 24 testing standard
- PAS 24 hinges and internal pull handles
- Suitable for manual & solar powered integral blinds
- Oversized panels possible (maximum width of 1500mm)
- External cills available in 150mm, 190mm or 225mm
- Discreet but extremely strong magnetic panel catch
- Small projection lever handle allowing the master leaf to fold closer to folding leaf
- In-line flat handles on all intermediate panels
- 90 degree moving corner post solution available
- Typical overall U value 1.3 W/m<sup>2</sup>k with 1.0 W/m<sup>2</sup>k glazing. Additional high insulation options available to lower U value further
- Rebated bottom track tested up to 600 pa water tightness (Class 9A)
- Wind load resistance Class B4
- EPDM anti-rattle tubes for shoot bolt rods
- Secured by Design accredited product
- Unique steel track system for the doors to run on

