

# PLOT 1, JULIA DRIVE, SANDWICH DWELLING and GARAGE for R. FOWLER

1013

MR. THESE DRAWINGS ARE FOR THE SOLE PURPOSE OF OBTAINING CBC PLANNING & BUILDING ACTS APPROVALS.

ALL NEW ELEC. WORK TO BE DESIGNED, INSTALLED, INSPECTED & TESTED IN ACC. WITH BS 7671: 2001 OR AN EQUIVALENT STANDARD. THE WORKS TO BE BY AN INSTALLER OR BY A SEPT PERSON WITH A CERT. OF COMPLIANCE PROVIDED TO BUILDING CONTROL UPON COMPLETION OF THE WORKS.

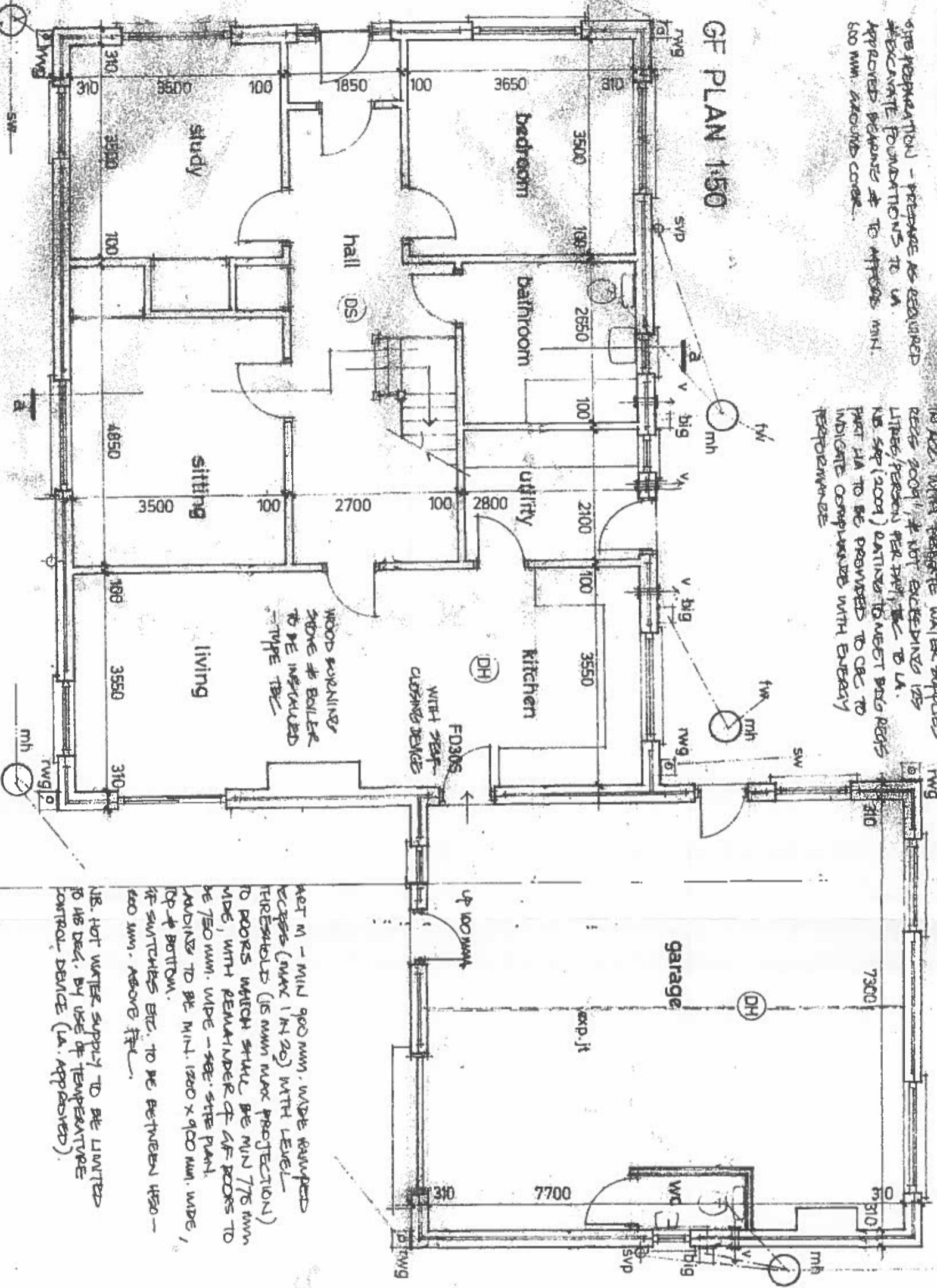
THE FOUNDATION - PREPARE AS REQUIRED & EXCAVATE FOUNDATIONS TO A APPROVED BEAMS & TO APPROX. MIN. 600 MM. AROUND CORNER.

WHOLEHOUSE WATER USAGE NOT TO EXCEED 120 LITRES/PERSON/DAY, TO ACC. WITH PERMITS WATER SUPPLIES REGS 2000/1, & NOT EXCEEDING 125 LITRES/PERSON PER DAY, TO ACC. WITH BS 5491 (2004) PART 1 TO MEET THIS REGS PART 11A TO BE PROVIDED TO CBC TO INDICATE COMPLIANCE WITH ENERGY PERFORMANCE.

MOD. NOVEMBER 2015 - TO PLANNING & BLDG. ACTS REQUIREMENTS.  
MOD. OCTOBER 2014 - GARAGE LAYOUT AMENDED.  
INTERNAL MEASURED FLOOR AREAS SHOWN ON PLANS TO KITCHEN (5.11m<sup>2</sup>), UTILITY (3.01m<sup>2</sup>) & BATHROOM (5.11m<sup>2</sup>) WITH TRUCKLE HEIGHTS TO ALL ASSOCIATED WINDOWS.  
HEAT & SMOKE DETECTORS WERE & LINKED TOGETHER TO OWN FURNISHED, TO BE INSTALLED TO ACC. APPROVED POSITIONS, TYPE, SIZE PER PLANES APPROVED, WITH 72 HR. BATTERY BACK UP, TO BS 5802 Pt 1.

MOD. SEPTEMBER 2015 - SHEETS 1-5 REV. AMENDED - DETACHED GARAGE REMOVED / AMENDED ACCORD. AND ATTACHED GARAGE SPACE AS SHOWN.  
DRAINAGE: SURFACE - GUTTS CONNECTED @ 100mm DIA. HEPERLEVE, OR EQUIVALENT, TO SOIL DRAINAGE SYSTEM TO SATISFACTION OF LA.  
FOUL - CONNECTED AS SHOWN VIA PROP. RATES, HP. WERE REQUIRED IN 100mm DIA. HEPERLEVE, OR EQUIVALENT, @ 100mm DIA. HEPERLEVE, WITH ALL CONNECTIONS & GULLIES TO SATISFACTION OF LA.  
SANITARY FITTINGS FIXED AS SHOWN (75mm dia. TRAP TO FP. FITTINGS) AND CONNECTED VIA 57mm DIA. WASTE PIPE TO 100mm DIA. SAT'S & CHASES, MIN. 200mm. BETWEEN CONNECTIONS.  
PUMPS/INSTRUMENTS TO BE 5800 PT 13. & BS 5572 (pump-out).

## GF PLAN 1:50



HEATING & HOT WATER BY OIL FIRED BOILER, POSE TO BE CONFIRMED, INCL. FUEL/COMBUSTION AIR. SYSTEM TO HAVE ROOMS & THERMOSTAT CONTROLS, INTERLOCKS ETC. & TO BE INSTALLED TO MANUFACTURER'S INSTRUCTIONS. WORK TO BE DONE BY SEPT ENGINEER WITH CERTIFICATION PROVIDED TO LA UPON COMPLETION, ENSURING COMPLIANCE WITH REGS 4.2 OF APPROVED DOCUMENT J (2002 E.A.)

NO. SIZE & LOCATION OF OR STORAGE TANK TO BE IMPLEMENTED, INCLUDING PIPE/SPLASH PRECAUTIONS TO BE IMPLEMENTED.  
GARAGE ROOF: GENERALLY AS SPECIFIED ON SHEET 2 OF 3, ONTO PRE-FORMED TRUSSES @ 400mm c/c, ALL TO BS 5263 Pt 5, WITH ALL STRUCTURAL DETAILS, WIND BARRIAGE, TRAPPS ETC. TO MANUFACTURER'S DETAILS, TO BE LA. APPROVED.  
FLOOR: 150mm. CONCRETE SLAB, WITH A442 REINFORCING, INCL. EXPANSION JOINT INSTALLED, ON VERTICAL 100mm. FROM ON SAND BLINDING ON MIN. 150mm. LAYER OF HEDRAGE.

NOTE: HOT WATER SUPPLY TO BE LIMITED TO 45 DEG. BY USE OF TEMPERATURE CONTROL DEVICE (LA. APPROVED).  
NOTE: PART 1 - SEE CALCULATIONS ETC. FROM DO-ORD CAMERA FOR ENERGY PERFORMANCE CERT. ETC. INTERNAL BATTERY POWERED CAMERA MONITORING SYSTEMS, POSITIONS TBA WITH LA, TO BS EN 50291:2001

WOOD BURNING STOVE & BOILER TO BE INSTALLED - TYPE TBC

F030S WITH SEAF CUSHING DEVICES

UP 100mm

exp. jt

garage

wc

big

big

big

big

big

big

big

SW

SW

SW

SW

SW

SW

SW

SW

SW

SW

SW

SW

SW

SW

SW

SW