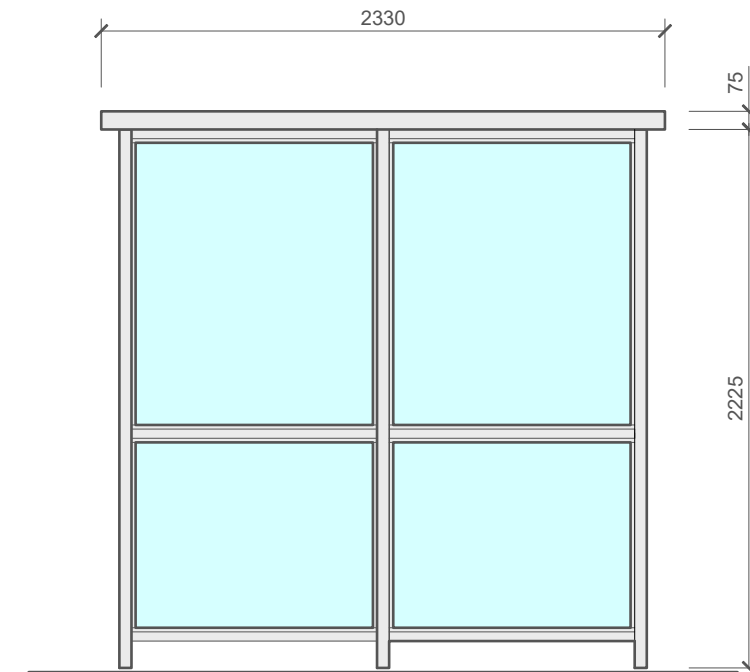


FRONT ELEVATION



Supplied as standard with adjustable spigoted legs for either surface fixing or setting into concrete pockets below ground.

Note - For surface fixing option, refer to minimum base requirement notes.

SIDE ELEVATION



PLAN VIEW

NOTES :

COLOURS :
Framework - Natural Anodised Aluminium;
Roof (Flat) - 'Alaska Grey' RAL.7000.
Glazing - Clear glazing;

CONSTRUCTION :
Framework - Vertical 50mm x 50mm aluminium section;
Horizontal 38mm x 38mm aluminium section.
Roof (Flat) - 33mm composite panel.
Glazing - 6mm toughened glass;

OPTIONAL FEATURES :
See relevant Sales brochure

MINIMUM BASE REQUIREMENTS
(Surface Fix Option) :
If no suitable existing base, then base to be a minimum size of 5575mm x 2380mm x 125mm thick concrete onto well consolidated hardcore.
Base to be smooth (float finish), flat, level and square and preferably be raised slightly above surrounding ground level



Glasdon U.K. Limited

Preston New Road
Blackpool
Lancashire
FY4 4UL

Tel: (01253) 600400
Fax: (01253) 792558

e-mail: sales@glasdon-uk.co.uk
website: www.glasdon.com

Title :
3No. 5-Bay (Long) x 2-Bay (Wide) Carleton Shelter
Flat Roof / Double Front Entry
At Seascale, Cumbria

SellaField Sites

Drawn By : SC	Scale : 1:30
Date : 14/07/22	Original Drawing Size : A3

Drawing No : **EQ70070471**

Glasdon©. This drawing is issued on the condition that it is not copied reproduced or disclosed to a third party either wholly or in part without the consent in writing of Glasdon U.K. Limited.