



# CONSTRUCTION ENVIRONMENTAL AND MANAGEMENT PLAN

FOR

New Aldi Store,  
Wyndham Place, Egremont

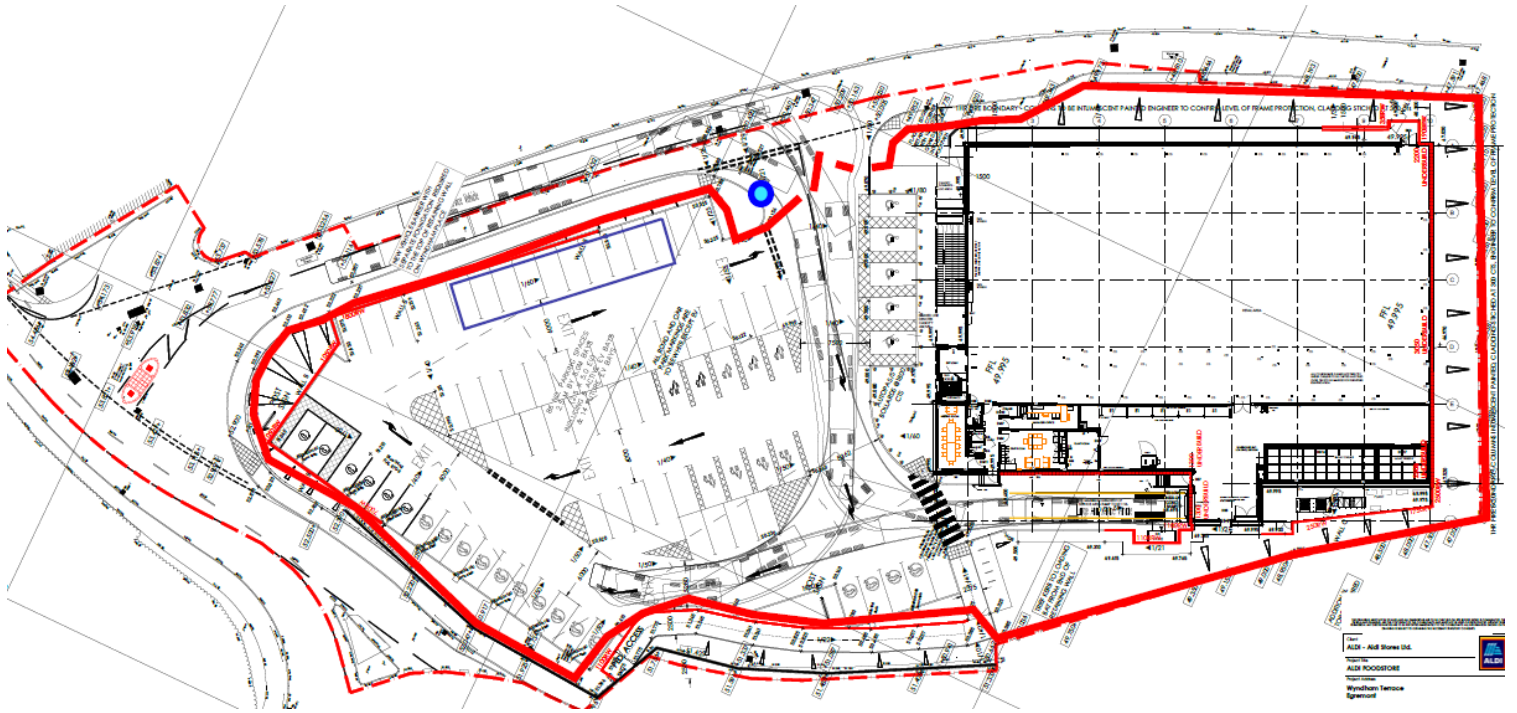
## Revision and Distribution Sheet

Issue	Date	Description of Change	Site Manager	Approved by Contracts Manager
Rev -	23/09/25	First Issue	TBC	

Forge Construction Management Limited  
Albert House  
2 Bells Square  
Sheffield

S1 2FY

This CEMP refers to the area below bordered by the solid red line.



# CONTENTS

1. BACKGROUND
2. HOURS OF WORKING
3. DUST SUPPRESSION MEASURES
4. SHEETING OVER CONSTRUCTION VEHICLES
5. STORAGE OF PLANT AND MATERIALS
6. POTENTIAL WATER RUN-OFF
7. MEANS OF ACCESS FOR CONSTRUCTION TRAFFIC
8. PARKING OF CONSTRUCTION VEHICLES
9. WHEEL WASHING / ROAD CLEANING
10. MEASURES TO CONTROL NOISE LEVELS
11. SITE HOARDING & SIGNAGE
12. STORAGE OF FUELS, OILS AND CHEMICALS
13. PROTECTION OF RETAINED TREES / VEGETATION
14. LIGHT POLLUTION MITIGATION
15. INVASIVE SPECIES

## 1. Background

Forge CM Ltd. have produced this Environmental Management plan (in conjunction with a 'Construction Phase Health & Safety Plan') to provide an outline to envisaged work practices on site and how they are to be managed while constructing the new Aldi Store, Dale Road, Matlock.

This plan will be communicated and implemented by the Site Manager, and monitored and updated to suit site demands during the project.

### General Considerations

The site, approximately 500m north of Egremont town centre is roughly rectangular in shape and is located directly southwest of Wyndham Place, south of East Road and northeast of Egremont Bypass (A595) with a roundabout directly to the northwest of the site at the junction of East Road and Egremont Bypass.

The site is occupied by a vacant petrol filling station in the north, with garages associated with vehicle maintenance garage and a car showroom and yard to the south. The site appears to be tiered with the petrol filling station level with the adjacent roundabout to the north, with ramps to both the east and west allowing access to the garages and showroom at a level approximately 2m lower. A plan of the petrol filling station infrastructure has identified there are two 9000-gallon tanks to the northwest of the pump islands and two smaller tanks (assumed to be 3000-gallon tanks based on the rough dimensions). A copy of the petrol filling station infrastructure plan is included as Drawing G0002 included in Appendix A. Car wash bays are present to the rear of the petrol filling station and north-east of the existing garage(MOT, service and repair / showroom).

The majority of site appears to be covered in concrete and coated macadam with palisade enclosed yard in the south surfaced with gravel hardstanding. The site is bound by timber post and rail fence in the east with an access point off Wyndham Place halfway along the boundary. The northern end of the site is open where access is made to the petrol filling station and the northwestern boundary is formed by a highway retaining wall with metal rail fencing on top with the southwestern boundary formed with semi mature and mature trees.

The site has remained undeveloped from the earliest plans until the late 1960s when a garage building was constructed in the north of the site. This building was extended a number of times from the early 1990s with a canopy for the petrol filling station and construction of the existing car sales showroom and garage services to the south. In the 1960s the south of the site appears to have been cut to form a yard to the south of the garage.

The adjacent land use is as follows: North: East Road and Wyndham Place with housing and open land beyond. East: Wyndham Place with residential properties beyond. West: Egremont Bypass with shops, a car park and residential properties beyond. South: Residential properties.

There are no bus stops within the immediate vicinity.

It is the company's intention to prevent all forms of nuisance to neighbours and the environment. Fugitive dust and water emissions should be prevented from crossing the site boundary, and the occasions when noise created on site is higher than ambient levels for frequent or prolonged periods kept to a minimum.

All contractors and their employees will be advised of the requirements and will be required to account for them in their working practices.

Relevant information will be passed on to workers during induction and will be re-enforced in briefings and toolbox talks.

## Monitoring

When operations which may create a nuisance are ongoing, or when weather conditions are such that dust etc. may be blown off site, the Site Manager will carry out regular visual inspections of current activities and at the site perimeter, to ensure that noise and dust control and suppression measures are being used, that they are appropriate and effective, and that excessive noise or fugitive dust emissions are not leaving the site. All observations made will be recorded in the site log or diary.

The results of this monitoring will be reviewed at least weekly to assess whether any improvements to the control strategies are required.

As a general guide, dust suppression measures will be implemented whenever significant dust emissions are seen to be rising more than 1 metre from the ground or are leaving the site perimeter.

Ambient noise levels will be established prior to construction being commenced and will be used as a benchmark for assessing the potential of activities to create a noise nuisance. Hand held noise meters will be used to establish approximate noise levels.

## Public Liaison

Local Residents who may be affected by construction work will be advised of working hours and the proposed duration of the works. A contact name and number will be provided to handle any complaints and a log of any complaints made will be kept and regularly reviewed.

If any unexpected particularly noisy activities are required, residents will be informed.

## **2. Hours of Operation**

The following hours of operation are proposed for the Works:

Noisy construction related activities should not take place outside the hours of:

- 07.30 to 18.00 hours Mondays to Fridays
- 08.00 to 13.00 hours, Saturdays
- No noisy activities on Sundays or Public Holidays

No noisy work activities, deliveries or start-up of plant will occur outside of the hours nominated unless approval has been given by the Local Authority.

## **3. Dust**

Creation of some dust is inevitable during the construction process. It is the intention of the company that all significant fugitive dust emissions from the site will be prevented or minimised. To achieve this the following steps will be implemented.

All contractors will be required to specifically address dust issues within their risk assessments and method statements prior to commencing work on site. The dust control risk assessment will identify any areas where dust is likely to be a problem. The assessment should take into account

the type of work being carried out, the materials being used, the location of the site, and the prevailing weather conditions. Once the risk assessment has been carried out, measures should be put in place to control the dust and reduce the risks to workers and members of the public.

When brick rubble and concrete is crushed on-site for re-use, the plant shall be operated in accordance with the conditions attached to any permit issued. During such activities water jets / mists will be employed to suppress dust and the effectiveness will be monitored and recorded.

Materials shall be recycled / repurposed wherever reasonably practicable. All brick rubble and concrete foundations will be crushed on site to be re-used. All through this activity water jets/mist cannons will be used to reduce dust levels with regular monitoring.

Stockpiles will be planned and sited to minimise the potential for dust emissions. handling of materials will be kept to a minimum and drop heights will be as low as possible. Stockpiles will be sheeted or dampened down when required to prevent dust emissions.

Roadways will be kept as clean as possible and road sweeping equipment may be brought in if required. All reasonable efforts will be made to prevent tracking of mud and dirt onto highways.

To control dust generation, where reasonably practicable, water will be sprayed at the point of origin to prevent airborne dust particles migrating into the surrounding environment through water dust suppression bowsers (particularly in dry/windy conditions).

Vacuum extraction – specially designed tools will be fitted with an industrial vacuum unit that sucks the dust away as it is being created and stores it until emptied

#### **4. Sheeting-over Construction Vehicles**

Additional precautions that will be implemented during the Works include the covering of all haulage trucks with integral sheet covers. All trucks will be loaded to their prescribed weight limits, within the site boundary and will be covered with an integral cover sheet prior to exiting the Site.

#### **5. Storage of plant and materials including compound locations**

All site compound locations for various trade disciplines will be co-ordinated on site so that they are not in direct proximity to any sensitive receptors (i.e. housing; the public; pedestrians; water courses, environmental issues etc.) wherever practically possible due to the nature of the works involved.

This will also be implemented for the loading and unloading of plant and materials. These operations will only take place within the site's footprint. No loading and unloading will be undertaken off site.

#### **6. Potential water run-off during construction**

There could be potential for the temporary discharge of surface water from the Egremont site during construction.

No pumped water shall be discharged directly into sewers or watercourses without having first been filtered through a silt interceptor and / or settlement tanks if necessary. Gully bags or terram should be fitted to all gullies to prevent silt run off into new and existing drainage systems.

Watercourses should be adequately protected from contamination, and that silt run-off is prevented from entering watercourses for the entire duration of the works.

Measures shall be provided to ensure that water, whether groundwater, from precipitation or any other source does not accumulate in excavations or on subgrades.

Adequate drainage sumps will be installed during works and cut off trenches / dewatering measures will be used as required to manage surface water run-off to prevent any water from entering watercourses, either directly as surface water run-off, or indirectly via the surface water drainage systems.

Any contaminated water encountered will be treated and disposed in accordance with the incumbent project engineers' remediation strategy.

Guidance as outlined in the Gov.UK Environmental Agency website 'Temporary dewatering from excavations to surface water: RPS 261' shall be followed.

If additional guidance or clarity is required, the site manager or contractor shall contact the Environmental Agency directly via one of the means listed below;

National Customer Contact Centre  
PO Box 544  
Rotherham  
S60 1BY

Email [enquiries@environment-agency.gov.uk](mailto:enquiries@environment-agency.gov.uk)

Telephone 03708 506 506

## **7. Means of access for construction traffic**

The site will be accessed directly off Wyndham Place [cycle route 72].

All construction traffic will be suitably controlled at all times, there will be no need for vehicles to reverse out of the site, and there will be no need for site vehicles to queue on the carriageway. Banksmen shall be utilised where required.

## **8. Parking of Construction Vehicles**

All operatives will undertake a site induction informing them of the site conditions and directing them in regard to parking arrangements.

Where reasonably practicable, parking will be made on site within defined areas, and all construction traffic will be controlled via a banksman, for safety and co-ordination.

## **9. Wheel Washing**

Existing hardstand area(s) and driveway(s) will remain in place where reasonably practicable to ensure all trucks do not take spoil out onto the road. All vehicles will be checked before leaving the

site to ensure no spoil is on the wheels. It will be further backed up with wheel washing via an on-site high pressure jet washer as required.

External roads will be monitored daily for any spoil deposits and removed immediately on discovery. A road sweeper will be made available on stand-by should the need arise for additional road cleaning duties.

## **10. Measure to control noise levels during construction**

Creation of some noise is inevitable during the construction process. It is not anticipated that construction activities will create noise levels above ambient for frequent or prolonged periods however it is the intention of the company that noise emissions significantly above ambient background levels will be prevented or minimised. To achieve this the following steps will be implemented.

All contractors will be required to specifically address noise issues within their risk assessments and method statements prior to commencing work on site.

All plant and equipment brought onto site by contractors must meet the stated requirements with regard to maintenance and fitting of appropriate silencers etc.

Hours of work will be restricted to those agreed to avoid night times, weekends and Bank Holidays. Any deviation will only be with the consent of the Local Authority.

Temporary barriers and screens will be utilised to screen the site and noisy areas.

If possible mains electricity will be used in preference to mobile generators.

Generators and compressors if required will be sited as far away from sensitive receptors as practicable and be screened by site cabins etc. where possible.

Doors and covers on generators, compressors and engine compartments will be kept closed during operation.

Speed limits are enforced to reduce engine noise and vehicles, plant and equipment will be turned off when waiting or whilst not in use.

Drop heights will be minimised when loading vehicles with materials, waste, scaffolding etc. and speed limits are in place on site.

The site traffic management plan will minimise the need for reversing as far as is practicable and high frequency reversing alarms will not be utilised.

The number of plant items in use at any one time will be restricted if noise concerns are evident.

Because of the nature of the works proposed to be undertaken and its location to local receptors, it is not anticipated that any operations being undertaken will generate nuisance noise over and above the first action level of 80 dB to the site perimeter.

Nuisance from noise shall always be monitored to be in accordance with current guidelines and legislation [The Control of Noise at Work Regulations, 2005] and kept to a minimum. If it becomes necessary to carry out a particularly noisy activity, advance warning to neighbours shall be given. All plant and equipment - either contractors own or hired in, shall have regular service and maintenance checks, with records kept on site. All equipment shall be fit for purpose and have appropriate noise / vibration suppression fitted, all in accordance with BS5228 guidelines, the following shall also be deployed as part of the guidance

- Vehicles and mechanical plant will be maintained in a good and effective working order and operated in a manner to minimise noise emissions. The contractor will ensure that all plant complies with the relevant statutory requirements.
- Compressor, generator and engine compartment doors will be kept closed and plant turned off when not in use.
- All pneumatic tools will be fitted with silencers/mufflers;
- Care would be taken when unloading vehicles to avoid un-necessary noise;
- The use of particularly noisy plant will be limited, i.e. avoiding use of particularly noisy plant early in the morning.
- Restrict the number of plant items in use at any one time;
- Plant maintenance operations will be undertaken at distance from noise-sensitive receptors;
- Reduce the speed of vehicle movements;
- Ensure that operations are designed to be undertaken with any directional noise emissions pointing away from noise-sensitive receptors.
- When replacing older plant, ensure that the quietest plant available is considered;
- Drop heights will be minimised when loading vehicles with rubble;
- Vehicles should be prohibited from waiting within the site with their engines running or alternatively, located in waiting areas away from sensitive receptors;
- Local hoarding, screens or barriers should be erected to shield particularly noisy activities;
- Temporary noise screens will be used to reduce noise from particularly noisy activities and the height of perimeter hoarding will be extended where this would assist in reducing noise disturbance at sensitive receptors.
- Hours of operation should be strictly enforced and any deviations other than those previously identified will be with the consent of the local authority

## **11. Details of site hoarding & signage**

The site perimeter fencing will be erected using standard 'Heras' type mesh fence panels to enclose the project. This fence line will be monitored daily and repaired immediately upon discovery of any breaches.

Site signage will be erected to this fence line using 'standard' size construction signage detailing safety notices, information, and instruction.

## **12. Storage of Fuels, oils and chemicals**

All fuel items will be stored in a central location within a lockable fuel bowser that will be bunded to inhibit any fuel leaks. Spill kits will be made available at these locations. Likewise, any oils or chemical items will be subject to containment at a central location, shall be bunded and have spill kits available. Relevant COSHH information will be available, and any “special” precautions implemented on site if so required.

## **13. Protection of existing retained trees/hedges/bushes**

All existing retained trees, hedges and bushes will be protected in full accordance with details provided by Smeeden Foreman for the duration of on-site activities.

## **14. Control of light nuisance / pollution on site**

Construction works are anticipated to be undertaken during daylight hours and therefore no artificial lighting will be required.

In the event that temporary artificial task lighting is required, this shall be placed and / or deployed in such position[s] that no light outfall shall occur in a way to cause loss of amenity / nuisance or disturbance to adjacent land / properties.

No temporary artificial lighting shall be left illuminated outside of approved working hours.

Any temporary artificial lighting required for security provisions shall be placed in such a fashion so as not to cause loss of amenity / nuisance or disturbance to adjacent land / properties.

## **15. Invasive species**

If there are invasive species present on the site, Forge will engage the services of a specialist contractor, who will put in place the appropriate measures dependant on the specific species –

A watching brief by the environmental champion (Site Manager) will be undertaken throughout the works.

This document will be stored in the site office and a laminated sign stating that this is the case will be prominent across 'Heras' fencing to the site entrance along with the contact number for the Site Manager. This will allow members of the public to contact him to review so they do not need to enter the site, under H&S rules.

AUTHOR: P. Conway [Director]

SIGNED:



DATE: 23.09.2025

SITE MANAGER:

SIGNED:

DATE: