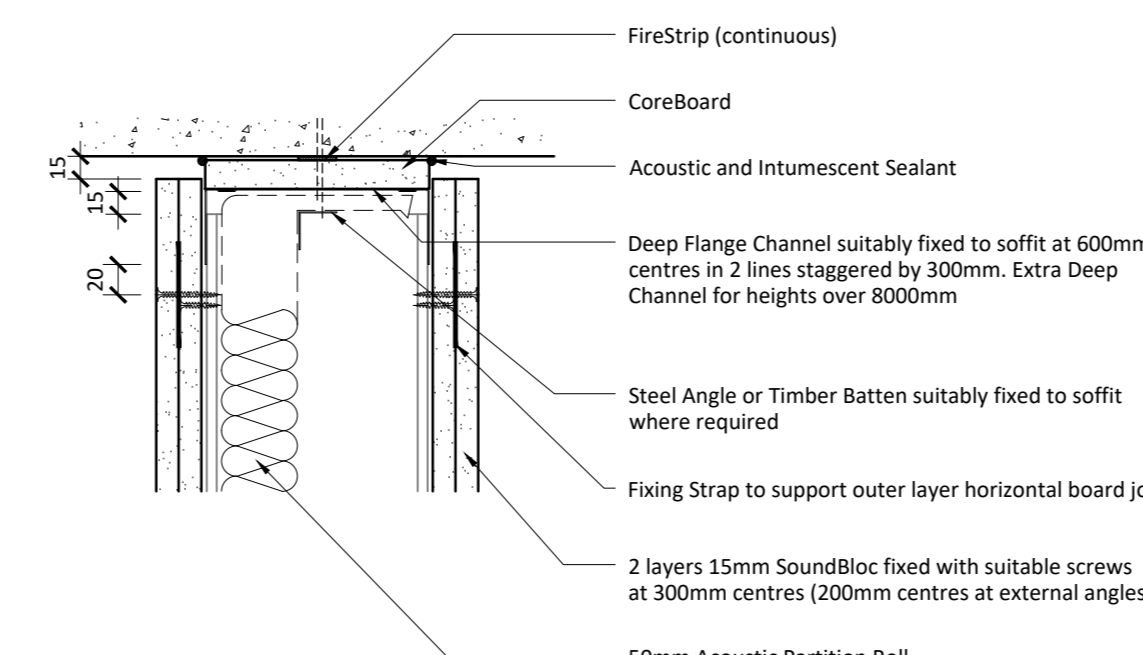
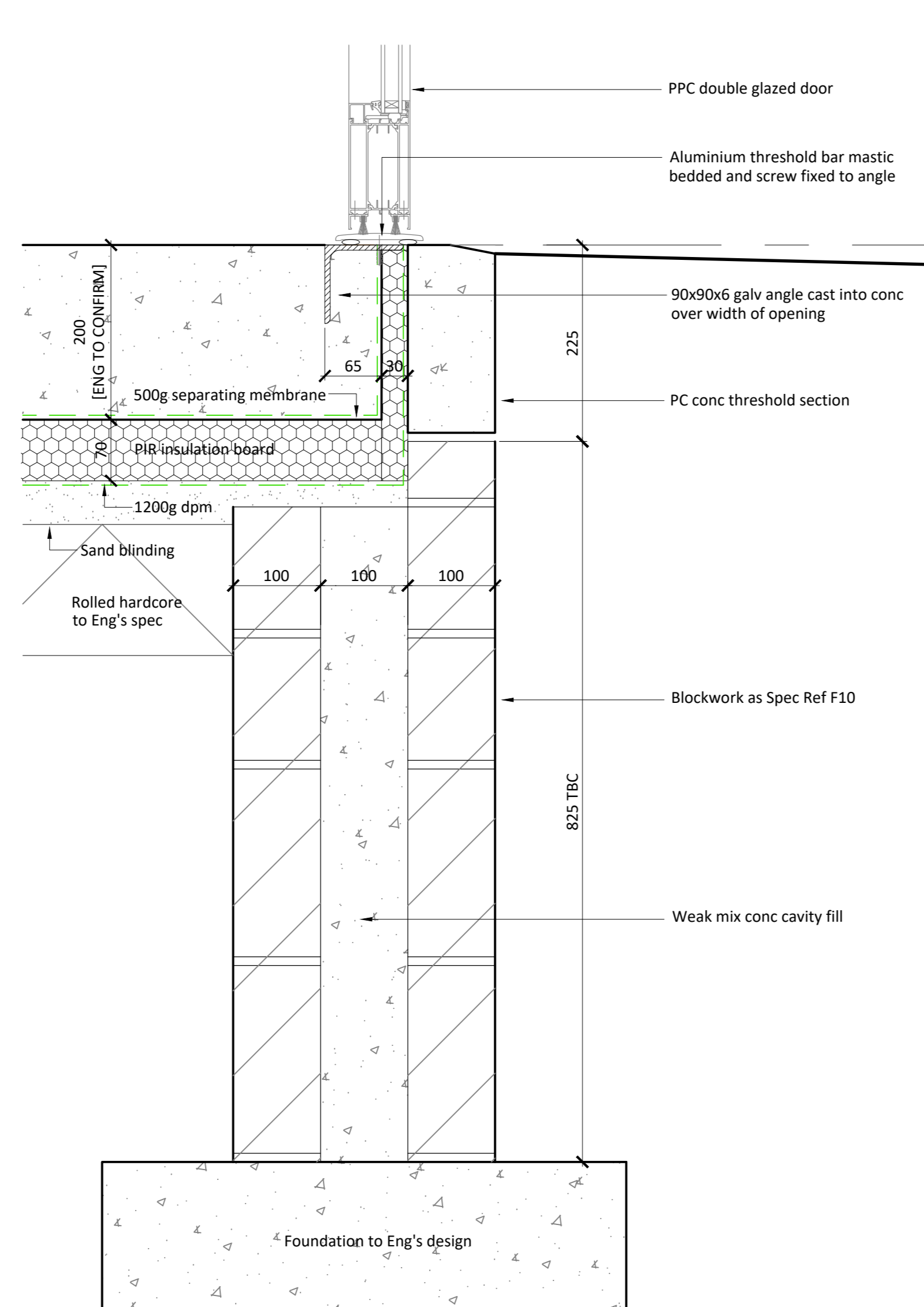


3. These drawings are for tender pricing purposes only and are considered "Design Intent" until formally issued "For Construction" purposes.
4. These drawings relate to architectural RFI elements only and should be read in conjunction with related design documents and specifications for complete information.
5. As such, NMA does not accept responsibility for the coordination of work as agreed by supporting disciplines.
6. This drawing is the property of NMA and its associated handles, third party approvals and Landlords consent(s) and/or agreement(s).
7. This drawing should read in conjunction with the associated specification and schedules as well as building construction particulars and related tender information.
8. This drawing will call out materials and finishes required ensure all surfaces made good, all redundant screws, hooks etc removed from walls. Any hollow/ loose plaster to be removed and replaced with new plaster. All surfaces are to be disturbed and surfaces skimmed, paint finishes applied as per [40] drawing series to create consistent wall finish. 6. Existing wall surfaces to be removed and replaced with new plaster and associated handles / locks checked to be in working order
9. Structure shown indicatively and subject to final design and construction.
10. All windows and cladding to be installed in accordance with manufacturer's recommendations as required to obtain maximum energy efficiency.



DEFLECTION HEAD DETAIL  
REQUIREMENT TBC BY STRUCTURAL ENG



Technical drawing of a wall cross-section showing insulation, blockwork, and various membranes. The drawing includes dimensions and labels for materials like DPM, block insulation, sandstone, and cavity fill.

Labels and dimensions on the left side:

- DPM wrapped over top of blockwork inner leaf
- 200 [ENG TO CONFIRM]
- 500g separating membrane
- 70 PIR insulation board
- 1200g dpm
- Sand blinding
- Rolled hardcore to Eng's spec

Labels and dimensions on the right side:

- 100mm block insulation
- 100
- Composite insulated metal faced carrier panel
- PE film separating membrane to face of carrier panel
- VNZ Plus standing seam panels all fixed in accordance with manufacturer's details
- Proprietary cavity closure
- 450 Sandstone as Spec Ref F21
- 'Ditherm' full fill insulation
- Eng to confirm wall thickness with suitability to retain
- 100
- 100
- 100
- 150 Weep holes at 900mm c/s
- 450 TBC Blockwork as Spec Ref F10
- Weak mix conc cavity fill

Composite insulated metal faced wall carrier panel

PE film separating membrane to face of carrier panel

VMZ Plus standing seam panels all fixed in accordance with manufacturer's details

Panel face aligned to sandstone wall as shown so that seam protrudes. Panel folded at base to form drip

Proprietary cavity closure

Sandstone as Spec Ref F21

'Ditritherm' full fill insulation

Eng to confirm wall thickness with suitability to retain

100

100

100

30

200

30

1200g dpm

Sand blinding

rolled hardcore to Eng's spec

External Ground Level

Weep holes at 900mm crs

Blockwork as Spec Ref F10

450 TBC

Weak mix conc cavity fill

140mm block insulation

DPM wrapped over top of blockwork inner leaf

Finish Floor Level

500g separating membrane

PIR insulation board

ENG DIM

PWL 7BC

100

150

450

100

100

100

30

200

30

1200g dpm

Sand blinding

rolled hardcore to Eng's spec

External Ground Level

Weep holes at 900mm crs

Blockwork as Spec Ref F10

450 TBC

Weak mix conc cavity fill

D60 [SECTION CC]  
CLADDING AND SANDSTONE PLINTH JUNCTION

PRELIMINARY  
DESIGN INTENT

03	SECTION 7.00 PORTLAND ANCHORS	KG	KG	20/07/2021
04	SECTION 7.01 DETAILS AND JOINTS	KG	KG	20/07/2021
05	SECTION 7.02 STAGS & 40mm REINFOR	KG	KG	20/07/2021
Rev	Description	By	Chk	Date
 <h1 style="text-align: center;">NORTHMILL</h1> <p style="text-align: center;">a s s o c i a t e s</p> <p style="text-align: center;">Suite 11, 100 River Valley Road, Westmead, NSW 1522          Tel: 02 9628 8888 Fax: 02 9628 8889</p>				
<p>Project</p> <h2 style="text-align: center;">THE EDGE</h2> <p style="text-align: center;">Cumbria's Coastal Activities Centre          Whitehaven</p> <p>Client</p> <p style="text-align: center;">Whitehaven Harbour Commissioners</p>				
<p>Drawing</p> <h2 style="text-align: center;">Envelope Details 2 - Design Intent</h2>				
<p>Project No: 2462      Scale @P: 1/50      Date: 29/07/2021</p> <p>Revision: 02      Checked: KG      Status: PLANNING</p> <p>Drawing No:      Revision:</p> <p>D(21)107      02</p>				