



EMMERSON (A)

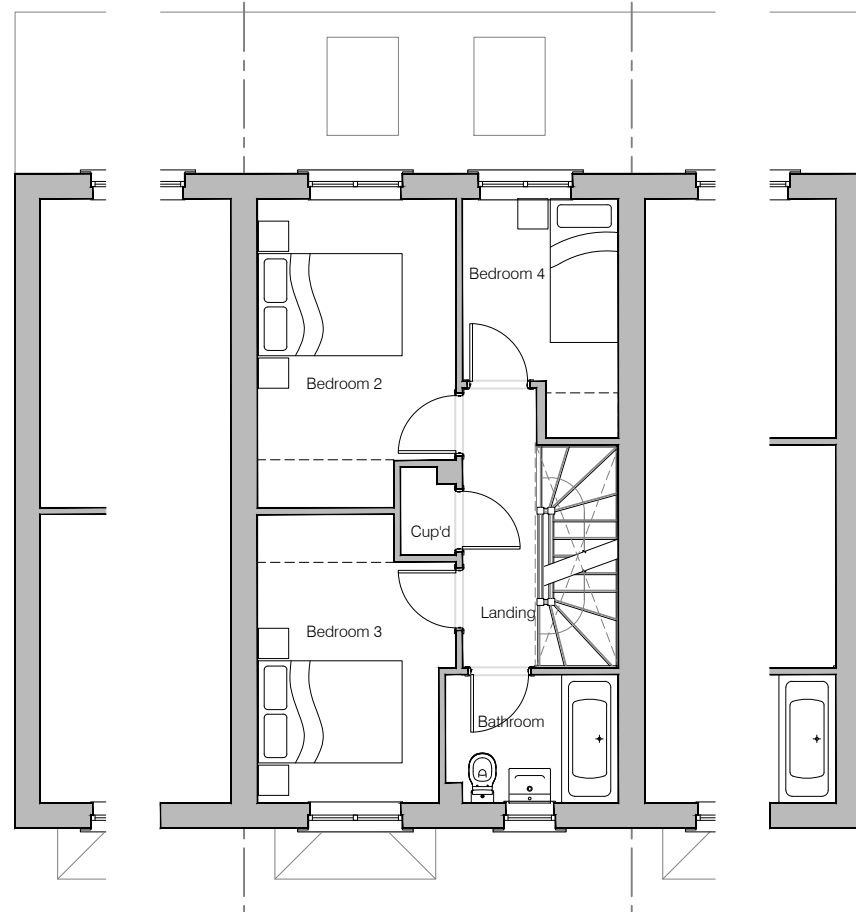
Planning Drawings

GF: 50.14 m² (539.70 ft²)
FF: 38.81 m² (417.75 ft²)
SF: 31.12 m² (334.97 ft²)
TOTAL: 120.07 m² (1292.42 ft²)

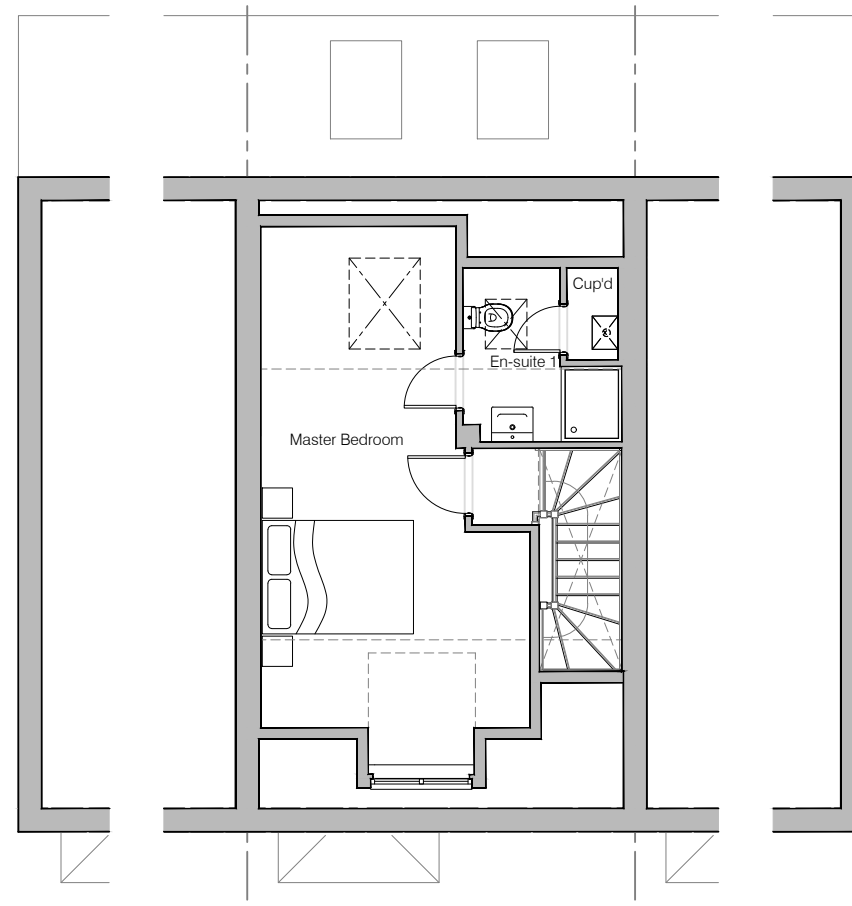
© **Story Homes.**

Story House, Lords Way, Kingmoor Business Park,
Carlisle, Cumbria. CA6 4SL.

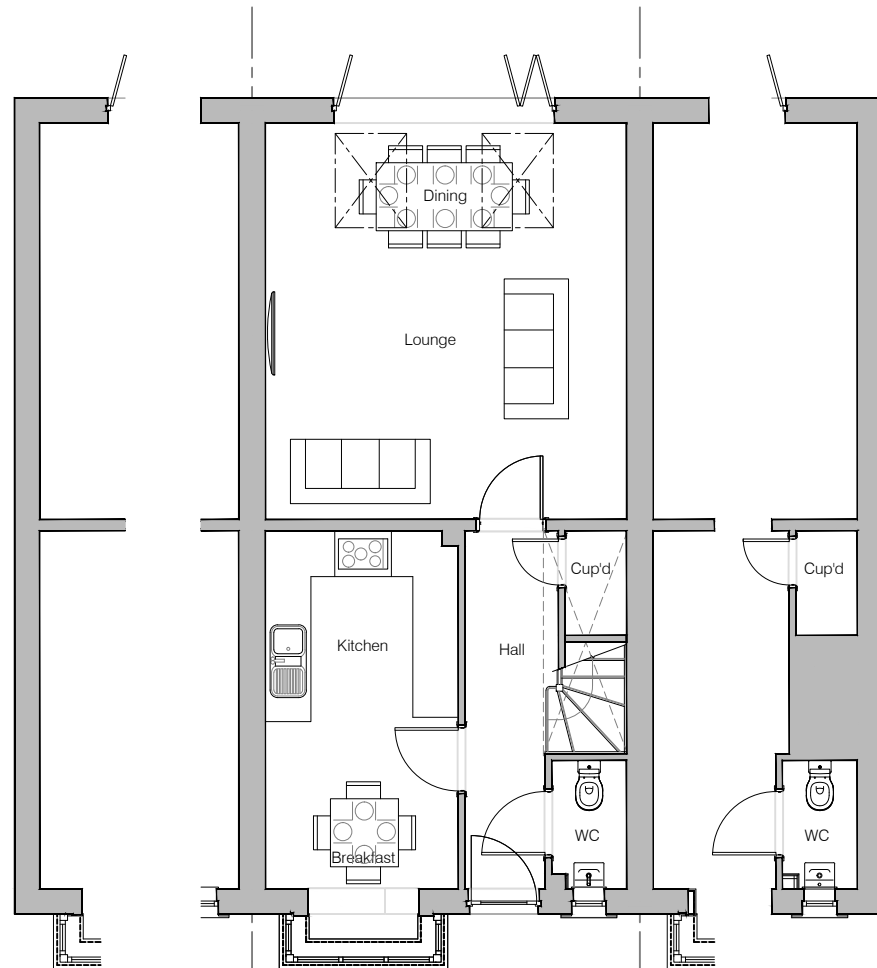
Tel 01228 404550
Fax 01228 404551



First Floor Layout



Second Floor Layout



Ground Floor Layout

NOTES



HOUSE TYPE

EMMERSON (A)

DRAWING

Planning Layout 1

DRAWN BY LW DATE 01-02-19

CHECKED BY AH, JR SCALE 1:100@A3

DWG PACK A/04 DRAWING NUMBER EMN-PLP1 REVISION A

Revisions Notes Date

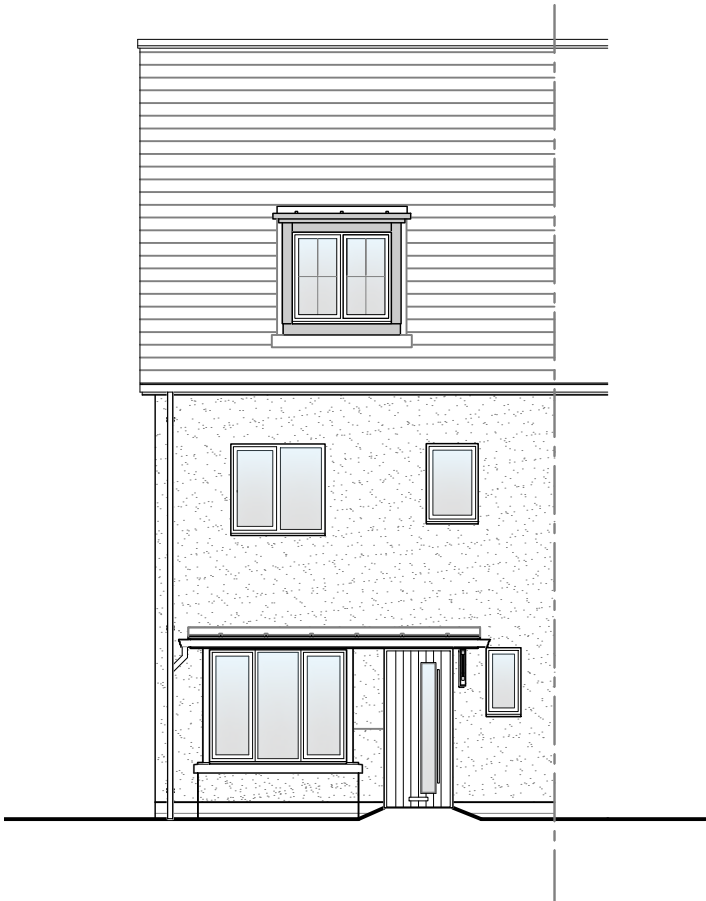
A Second floor layout updated. 12/02/20

© Story Homes.

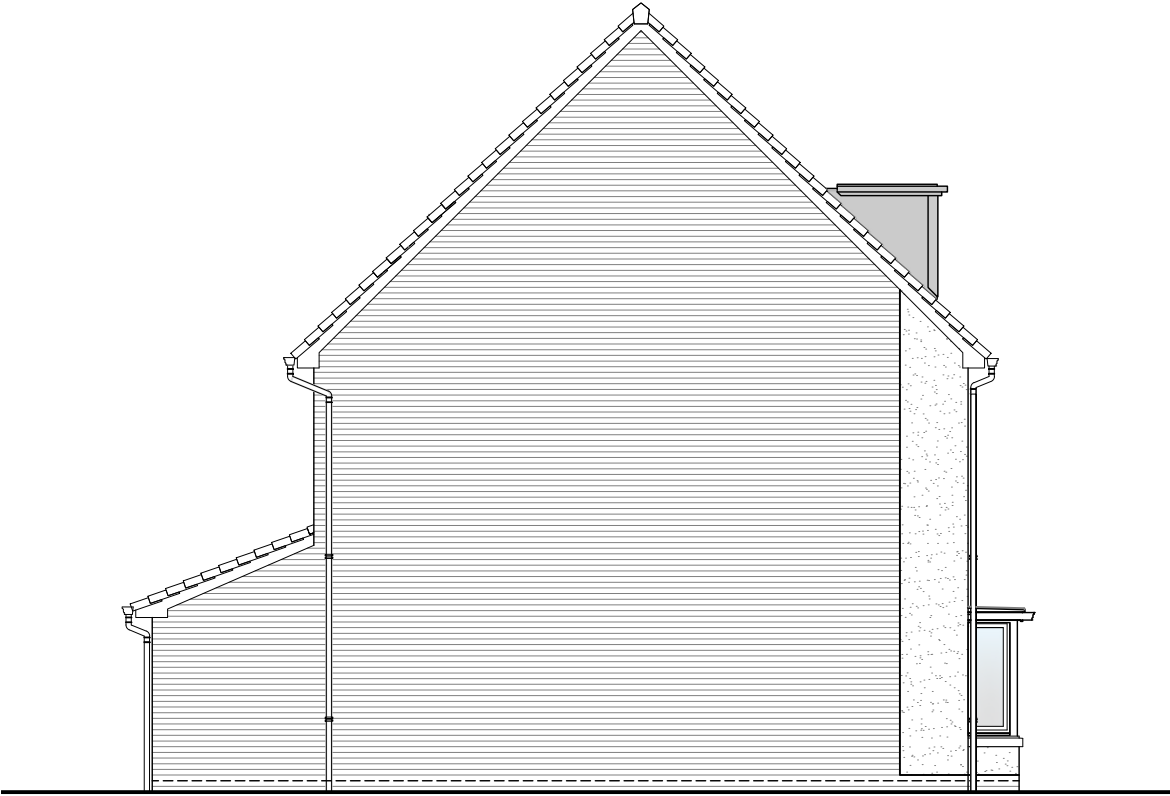
Story House, Lords Way, Kingmoor Business Park,
Carlisle, Cumbria. CA6 4SL

Tel 01228 404550

Fax 01228 404551



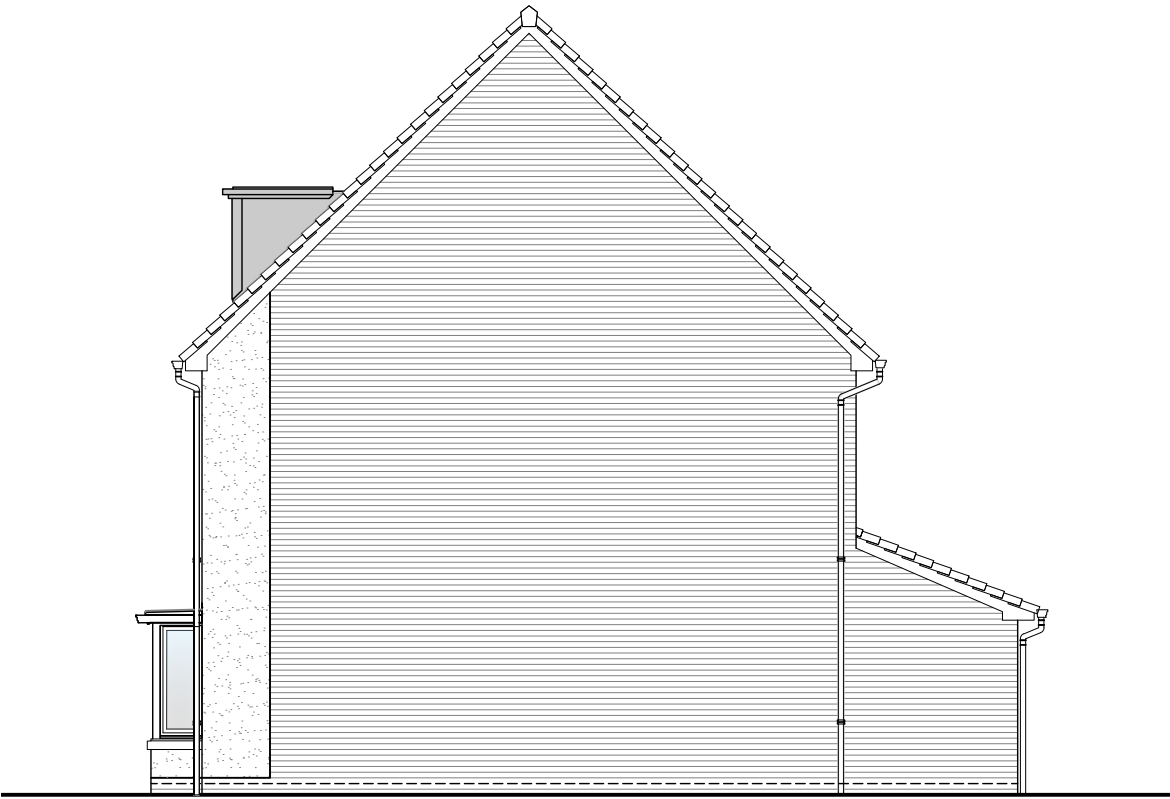
Front Elevation



Left Elevation



Rear Elevation



Right Elevation

NOTES



HOUSE TYPE
EMMERSON (A)

DRAWING
Planning Elevation C

DRAWN BY	LW	DATE	01/02/19
CHECKED BY	AH, JR	SCALE	1:100@A3
DWG PACK	A/04	DRAWING NUMBER	EMN-PLE1/2
Revisions	Notes	Date	REVISION
A	Roof pitch lowered to rear build out lowered.	12/02/20	B
B	Bottom of render finish raised by 75mm.	02/06/20	