

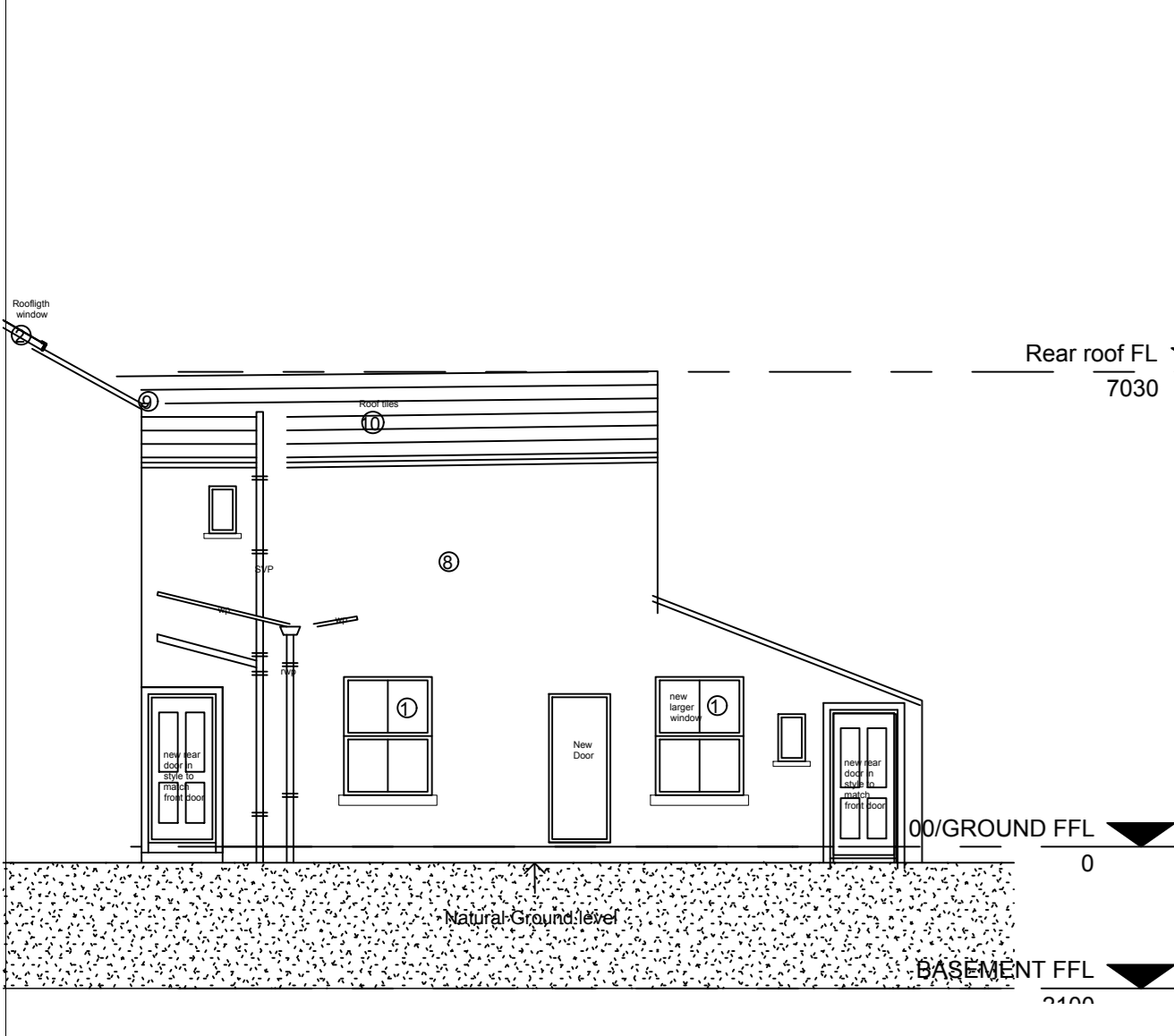


AP Elevation 1(From Lonsdale terrace)
1 : 100

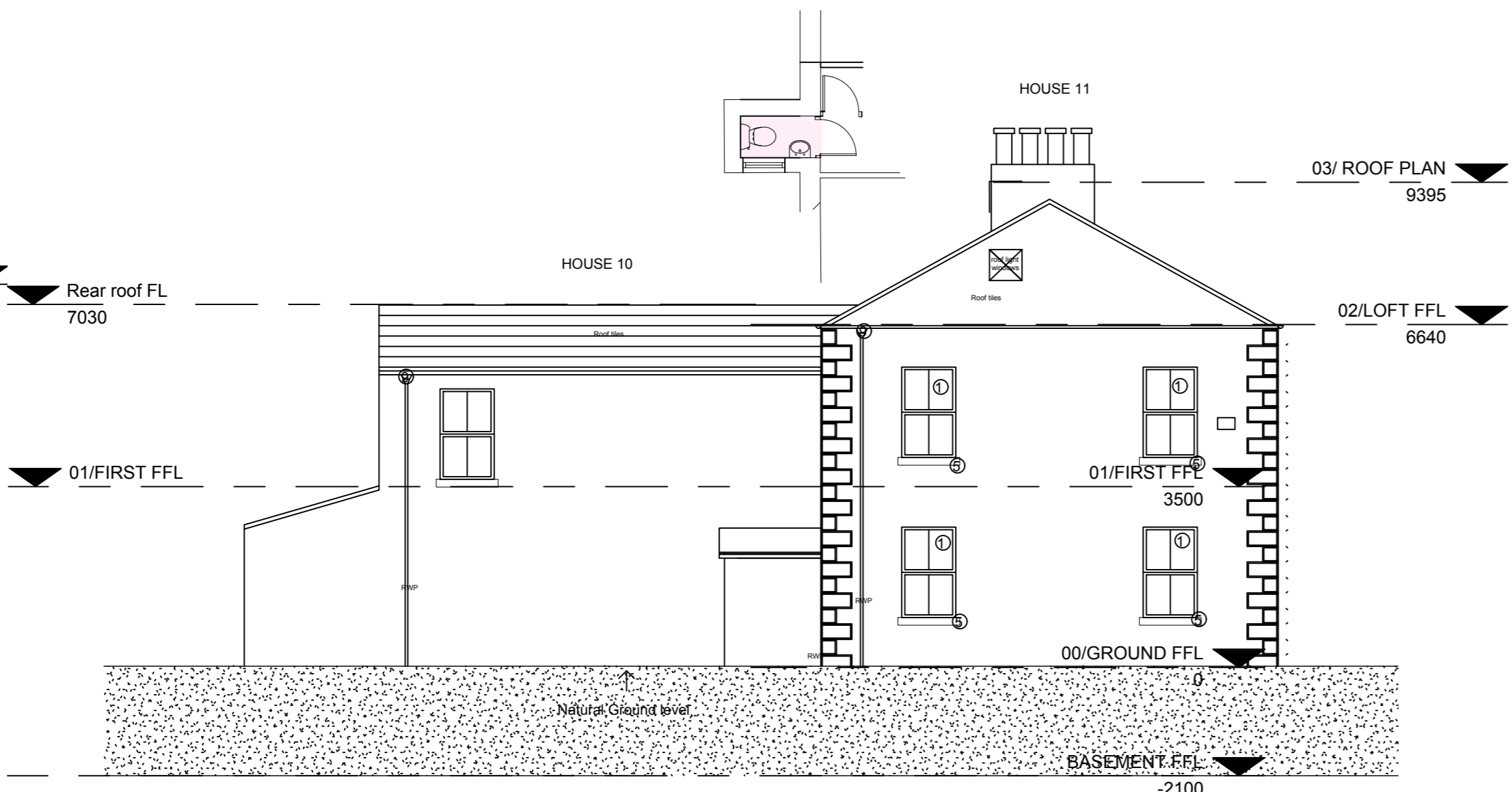


AP Elevation 2 (From Rear)
1 : 100

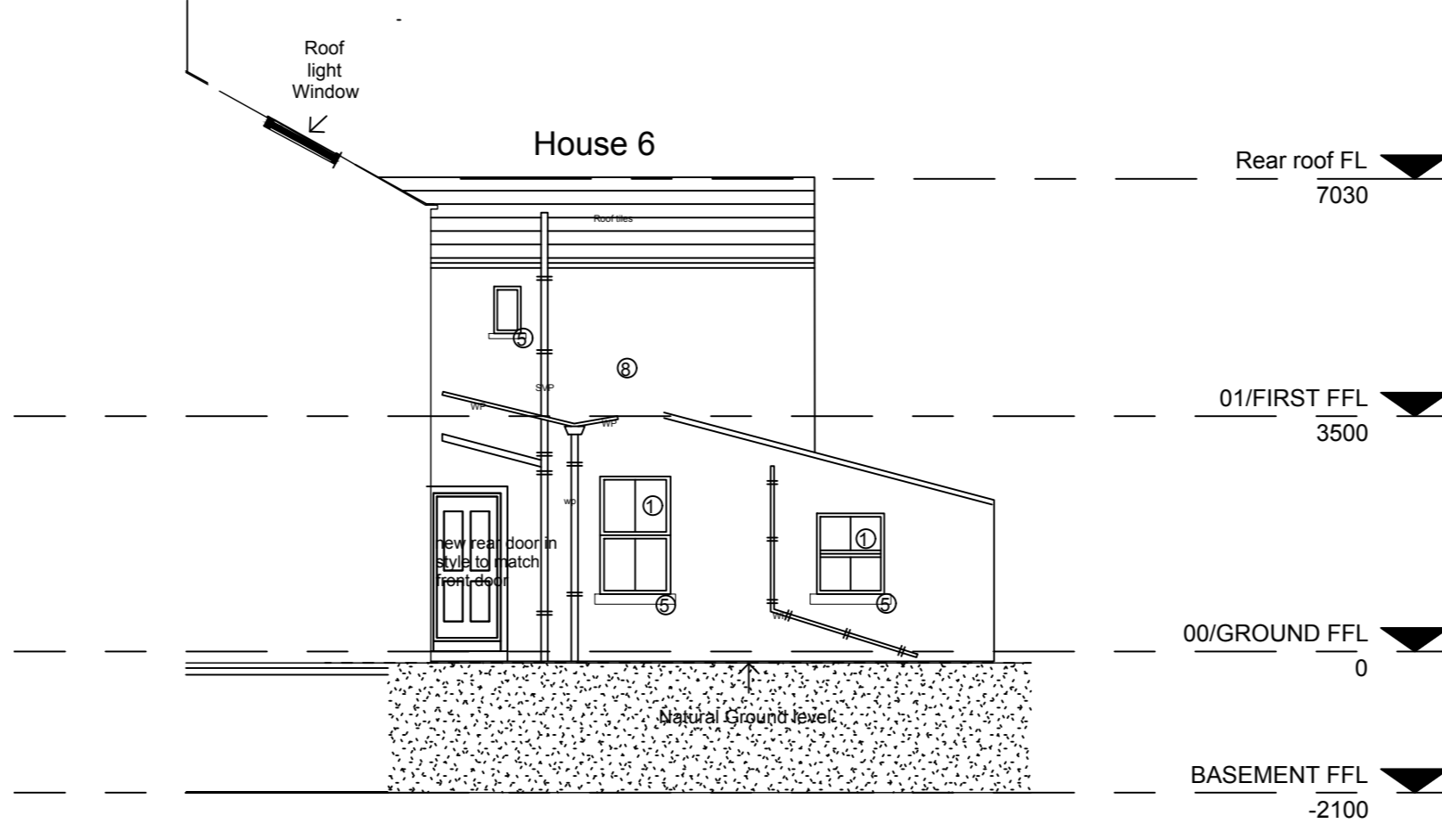
- KEY
- EXISTING WINDOW TO BE REPLACED WITH NEW S/M/INE DOUBLE GLAZED HERITAGE WINDOWS WITH OPENING LIGHT TO PROVIDE PURGE VENTILATION INCORPORATING TRIPLE VENT FOR BACKGROUND VENTILATION
 - EXISTING ROOFLIGHT WINDOW TO BE REPLACED WITH NEW DOUBLE GLAZED OPENABLE CONSERVATION ROOFLIGHT WINDOW
 - EXISTING RENDERED CHIMNEY AND VENTS TO BE RETAINED AS EXISTING AND REPAIRED AS NECESSARY TO MATCH
 - PARAPET WALL TO BE RETAINED AND REPAIRED AS NECESSARY
 - STONE CILL TO BE RETAINED AND REPAIRED AS NECESSARY
 - CAST STONE HOOD MOLD TO BE RETAINED AND REPAIRED AS NECESSARY
 - EXISTING HOUSE ENTRANCE TO BE RETAINED AND REFURBISHED AND REPAIRED AS NECESSARY
 - RENDER REPAIR TO BE UNDERTAKEN TO MATCH EXISTING COLOUR
 - EXISTING OUTERRING AND RAINWATER GOODS TO BE RETAINED AS EXISTING AND REPAIRED AS NECESSARY WITH NEW IMPORTED AS REQUIRED TO MATCH EXISTING
 - EXISTING ROOF TILES TO BE RETAINED AS EXISTING AND REPAIRED AS NECESSARY WITH NEW IMPORTED AS REQUIRED TO MATCH EXISTING
 - CORNICE CARRIED ON CONSOLES TO BE RETAINED AS EXISTING AND REPAIRED AS REQUIRED TO MATCH EXISTING
- PROPOSED WALL LIGHTING FOR EXTERNAL DOORS FOR ALL HOUSES FRONT ELEVATION



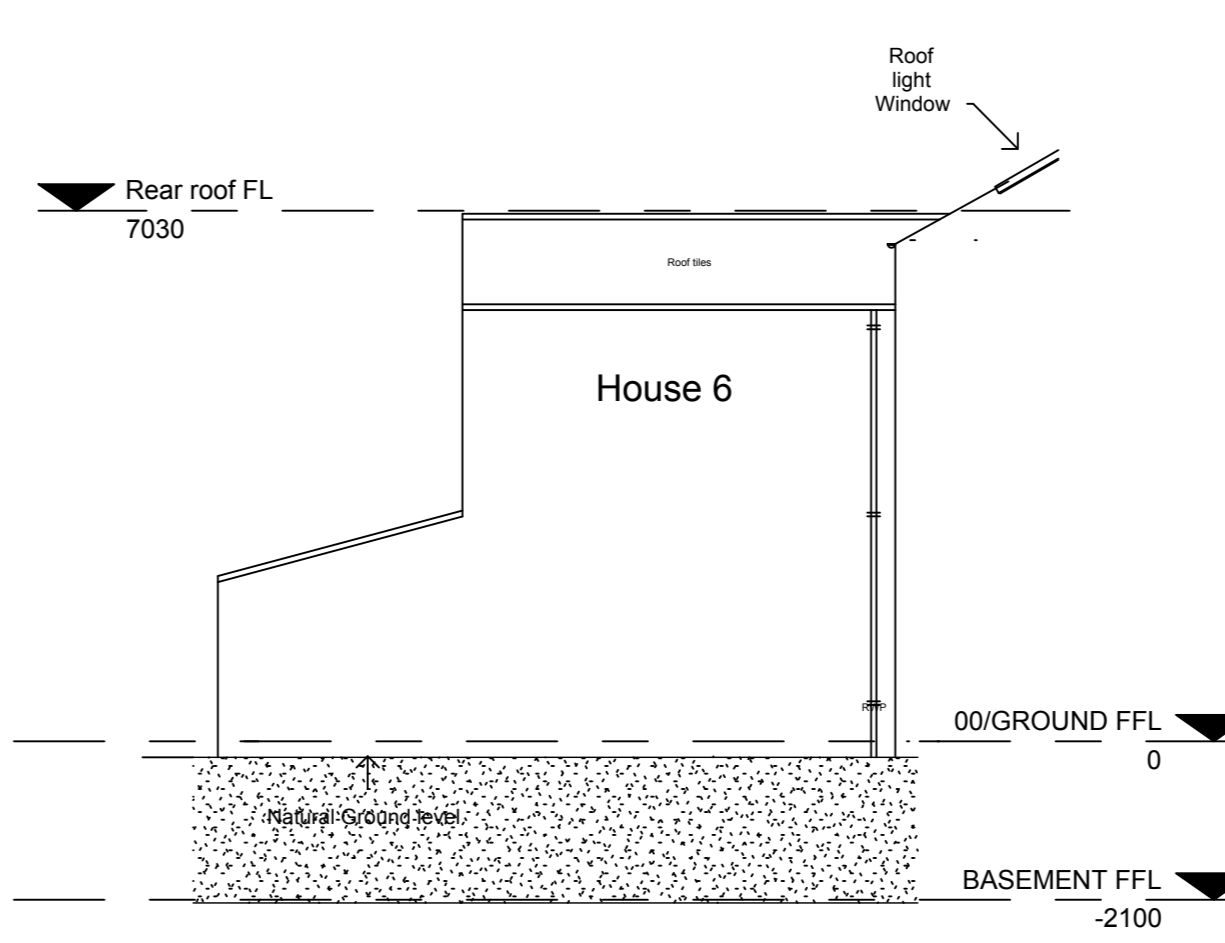
Elevation 10 (House 10 side elevation)
1 : 100



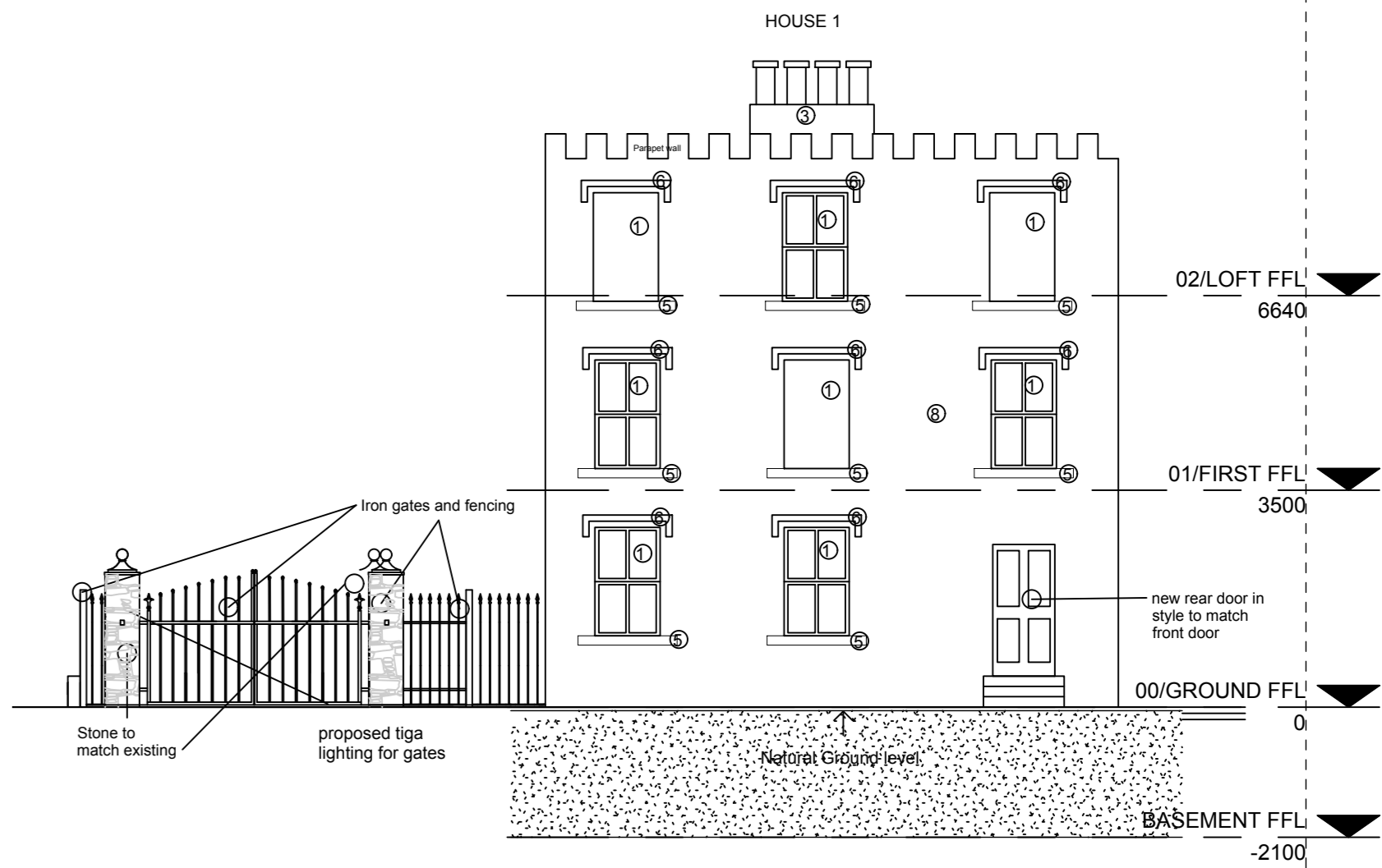
Elevation 4 (House 11+10 side elevation)
1 : 100



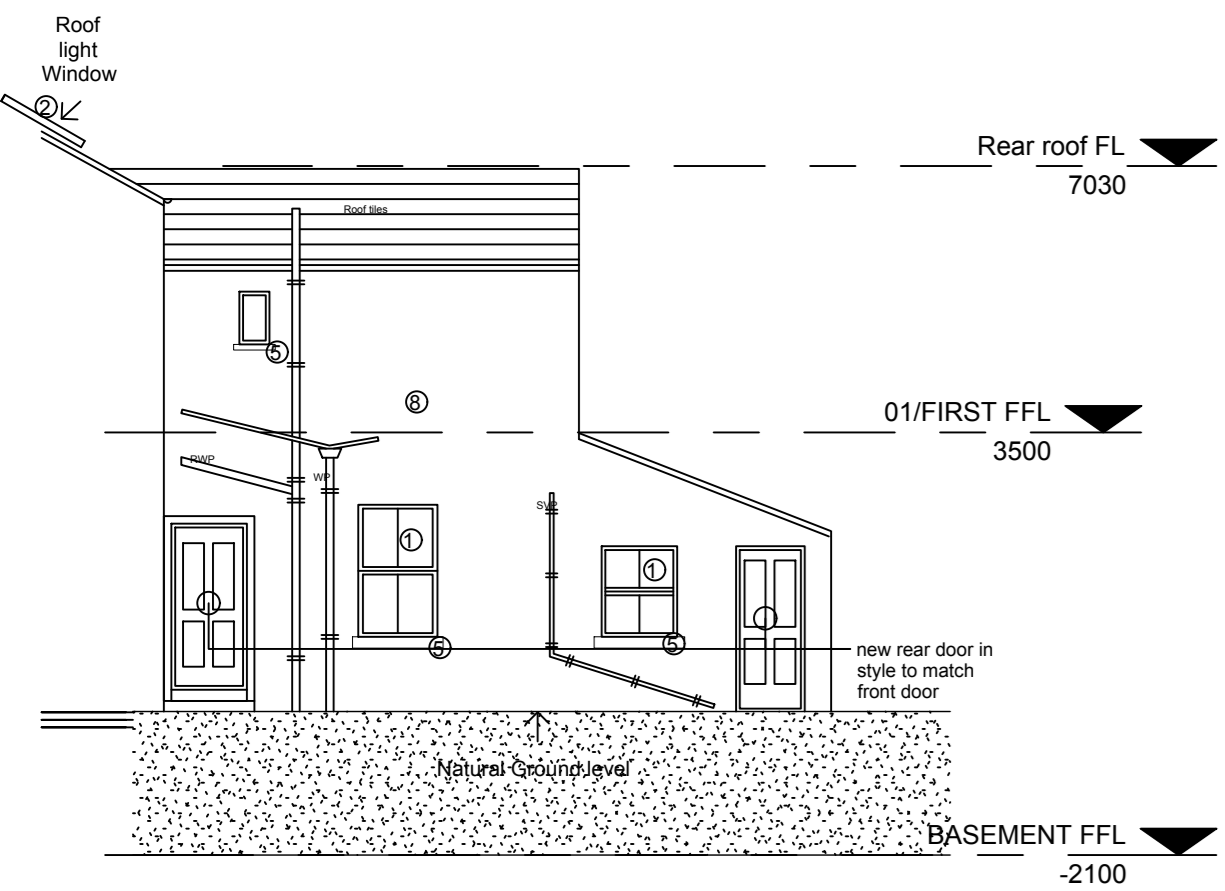
Elevation 6 (house 6 side elevation)
1 : 100



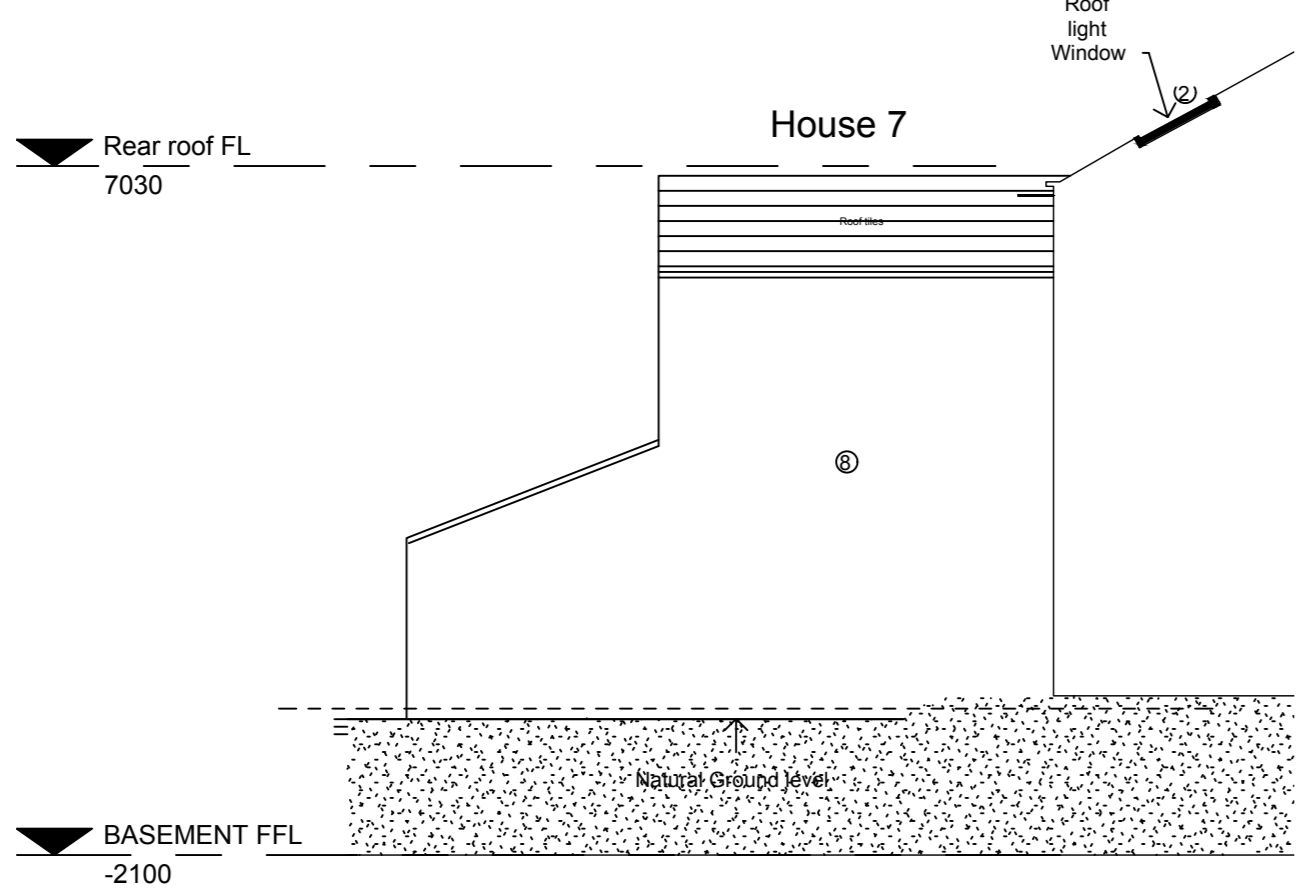
Elevation 6a (house 6 side elevation)
1 : 100



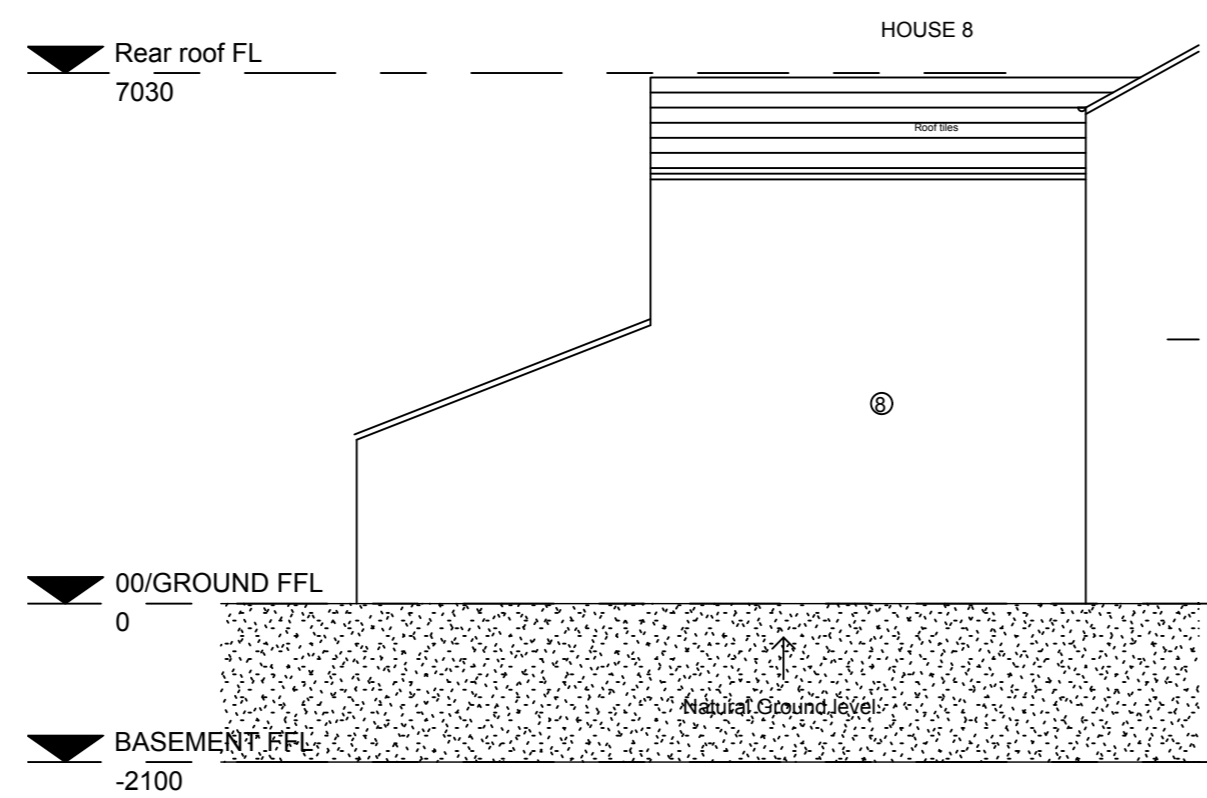
Elevation 3 (house 1 elevation from Finkle Street)
1 : 100



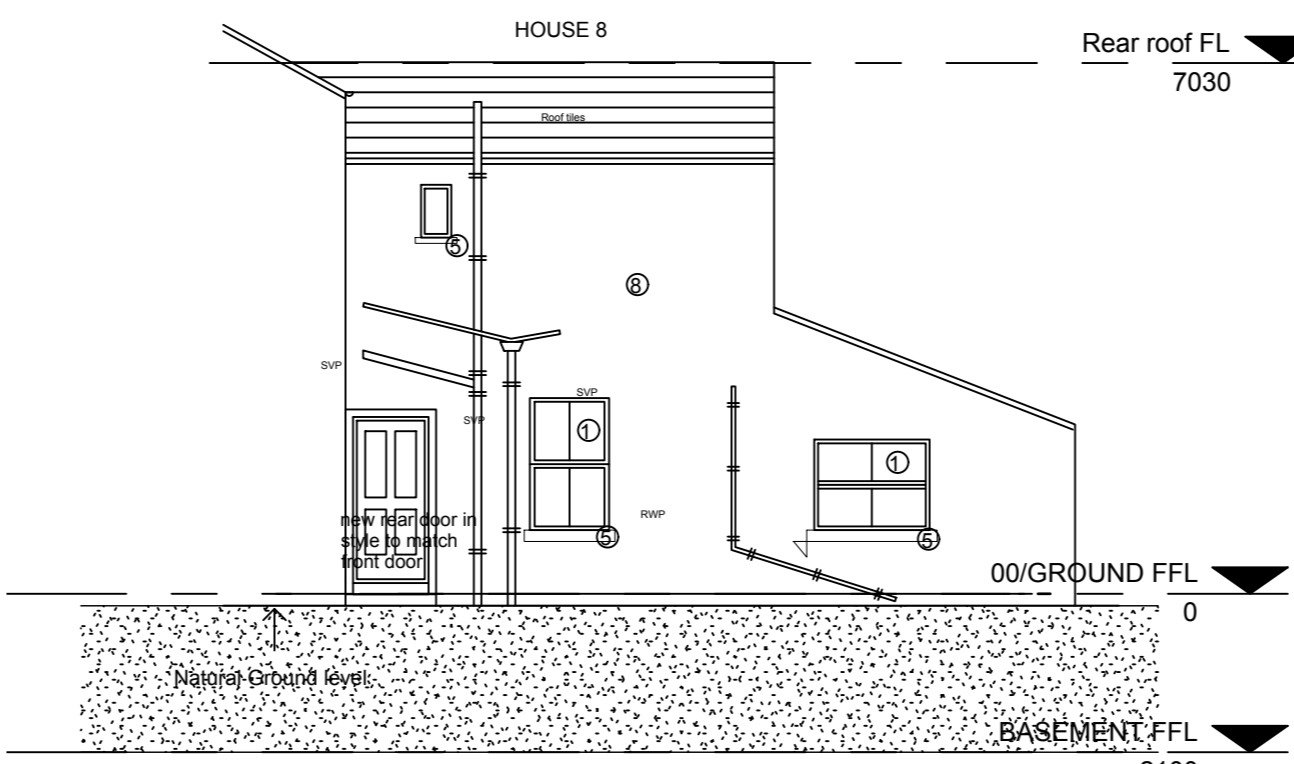
Elevation 7 (house 7 side elevation)
1 : 100



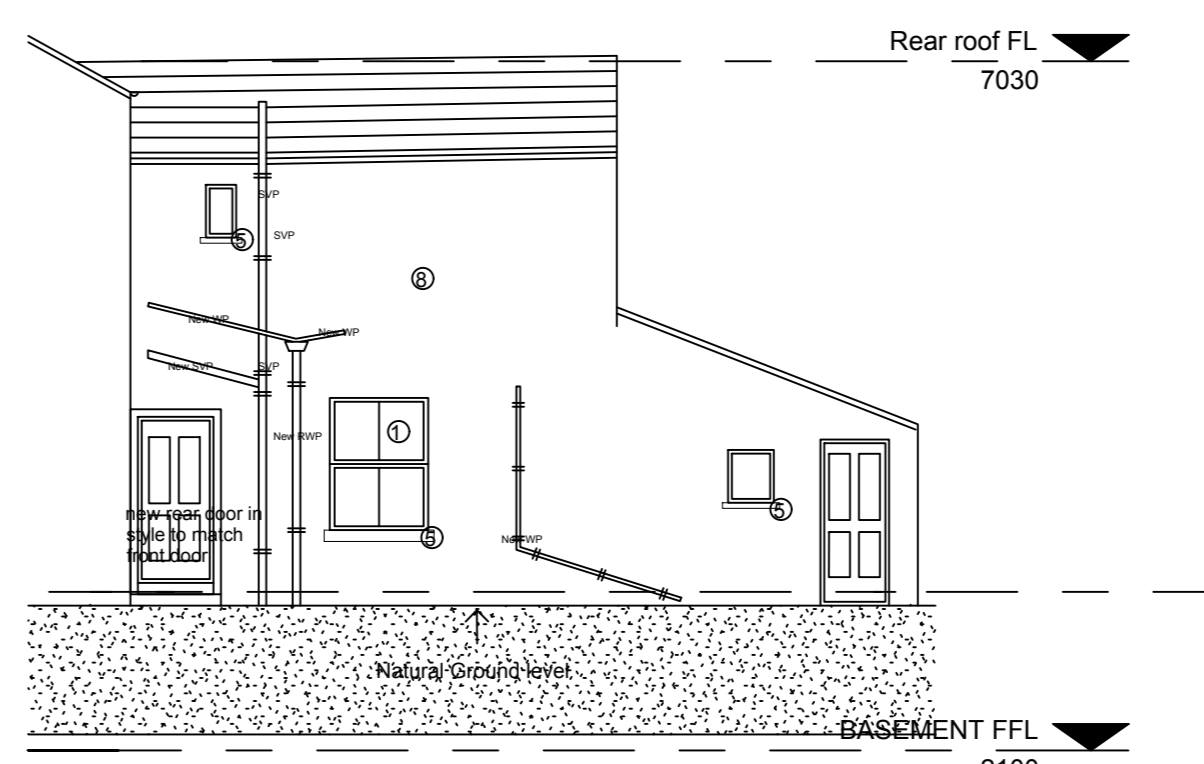
Elevation 7a (house 7 side elevation)
1 : 100



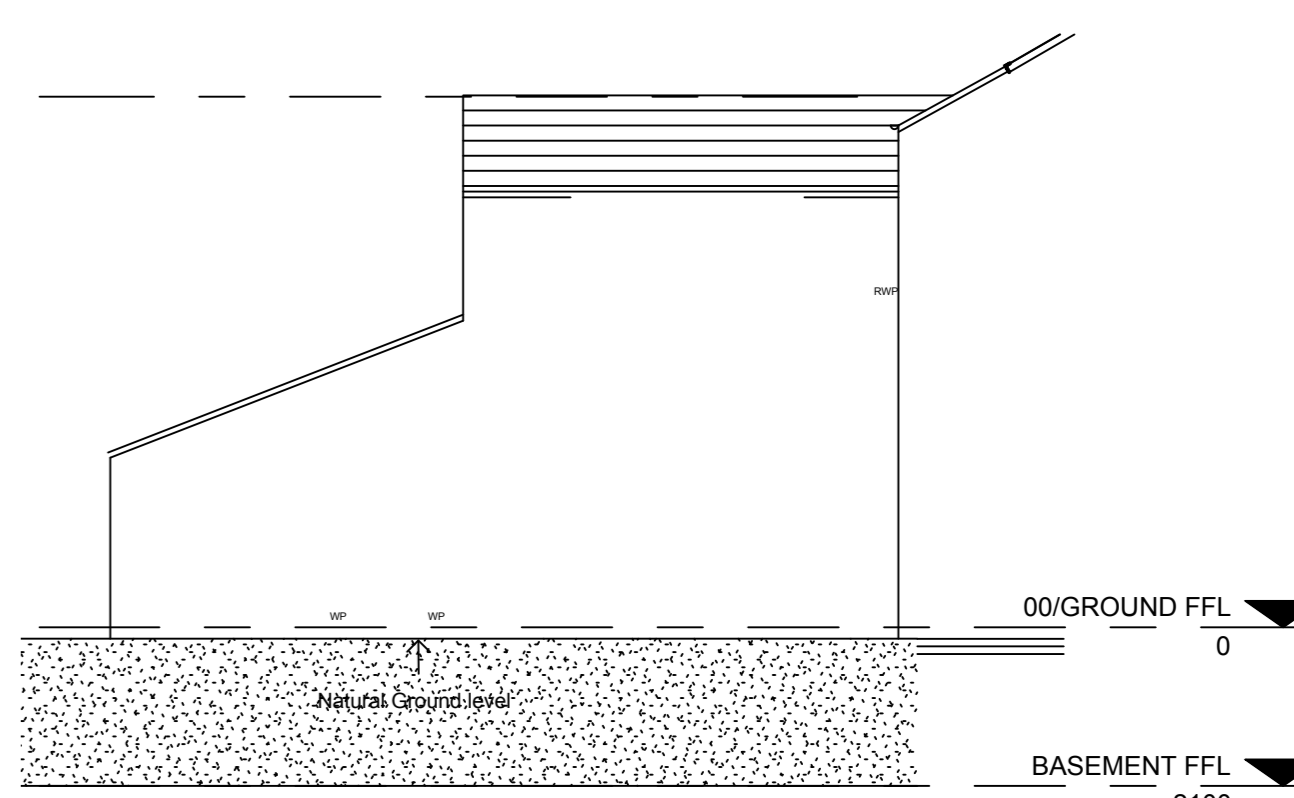
Elevation 8a (house 8 side elevation)
1 : 100



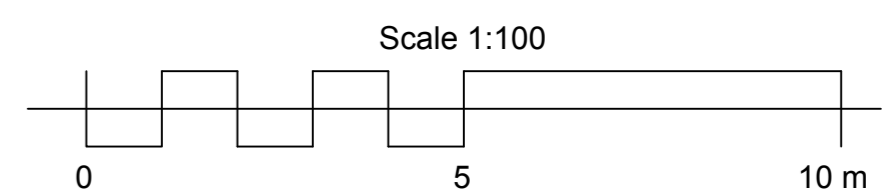
Elevation 8 (House 8 side elevation)
1 : 100



Elevation 9 (House 9 side elevation)
1 : 100



Elevation 9 (House 9 side elevation)
1 : 100



Rev	SS	date	or by
1	SS	Jan 2021	KMc
2	SS	Jan 2021	KMc
3	SS	Jan 2021	KMc
4	SS	Jan 2021	KMc
5	SS	Jan 2021	KMc
6	SS	Jan 2021	KMc
7	SS	Jan 2021	KMc
8	SS	Jan 2021	KMc
9	SS	Jan 2021	KMc
10	SS	Jan 2021	KMc
11	SS	Jan 2021	KMc
12	SS	Jan 2021	KMc
13	SS	Jan 2021	KMc
14	SS	Jan 2021	KMc
15	SS	Jan 2021	KMc
16	SS	Jan 2021	KMc
17	SS	Jan 2021	KMc
18	SS	Jan 2021	KMc
19	SS	Jan 2021	KMc
20	SS	Jan 2021	KMc
21	SS	Jan 2021	KMc
22	SS	Jan 2021	KMc
23	SS	Jan 2021	KMc
24	SS	Jan 2021	KMc
25	SS	Jan 2021	KMc
26	SS	Jan 2021	KMc
27	SS	Jan 2021	KMc
28	SS	Jan 2021	KMc
29	SS	Jan 2021	KMc
30	SS	Jan 2021	KMc
31	SS	Jan 2021	KMc
32	SS	Jan 2021	KMc
33	SS	Jan 2021	KMc
34	SS	Jan 2021	KMc
35	SS	Jan 2021	KMc
36	SS	Jan 2021	KMc
37	SS	Jan 2021	KMc
38	SS	Jan 2021	KMc
39	SS	Jan 2021	KMc
40	SS	Jan 2021	KMc
41	SS	Jan 2021	KMc
42	SS	Jan 2021	KMc
43	SS	Jan 2021	KMc
44	SS	Jan 2021	KMc
45	SS	Jan 2021	KMc
46	SS	Jan 2021	KMc
47	SS	Jan 2021	KMc
48	SS	Jan 2021	KMc
49	SS	Jan 2021	KMc
50	SS	Jan 2021	KMc
51	SS	Jan 2021	KMc
52	SS	Jan 2021	KMc
53	SS	Jan 2021	KMc
54	SS	Jan 2021	KMc
55	SS	Jan 2021	KMc
56	SS	Jan 2021	KMc
57	SS	Jan 2021	KMc
58	SS	Jan 2021	KMc
59	SS	Jan 2021	KMc
60	SS	Jan 2021	KMc
61	SS	Jan 2021	KMc
62	SS	Jan 2021	KMc
63	SS	Jan 2021	KMc
64	SS	Jan 2021	KMc
65	SS	Jan 2021	KMc
66	SS	Jan 2021	KMc
67	SS	Jan 2021	KMc
68	SS	Jan 2021	KMc
69	SS	Jan 2021	KMc
70	SS	Jan 2021	KMc
71	SS	Jan 2021	KMc
72	SS	Jan 2021	KMc
73	SS	Jan 2021	KMc
74	SS	Jan 2021	KMc
75	SS	Jan 2021	KMc
76	SS	Jan 2021	KMc
77	SS	Jan 2021	KMc
78	SS	Jan 2021	KMc
79	SS	Jan 2021	KMc
80	SS	Jan 2021	KMc
81	SS	Jan 2021	KMc
82	SS	Jan 2021	KMc
83	SS	Jan 2021	KMc
84	SS	Jan 2021	KMc
85	SS	Jan 2021	KMc
86	SS	Jan 2021	KMc
87	SS	Jan 2021	KMc
88	SS	Jan 2021	KMc
89	SS	Jan 2021	KMc
90	SS	Jan 2021	KMc
91	SS	Jan 2021	KMc
92	SS	Jan 2021	KMc
93	SS	Jan 2021	KMc
94	SS	Jan 2021	KMc
95	SS	Jan 2021	KMc
96	SS	Jan 2021	KMc
97	SS	Jan 2021	KMc
98	SS	Jan 2021	KMc
99	SS	Jan 2021	KMc
100	SS	Jan 2021	KMc

Franklin House
4 Victoria Avenue
Hemphill
HGI TEL
01423 529999
www.marchitects.co.uk

M.A.C.
Architects

Client
Remarkable Developments Ltd

Project
Residential Development of Existing
Properties 1-11 Lonsdale Terrace St Bees

Drawing
Elevations As Proposed

Computer file
2019-307

Project number
2019-307

Drawing number
P201-02

Scale
As Indicated At A0

Rev
1

Issue status
Planning

This drawing is to be read in conjunction with all related drawings.
Do not scale from this drawing. All dimensions must be checked and
verified on site before commencing any work or producing shop
drawings. The engineer should be notified immediately of any
discrepancy.
This drawing is copyright and remains the property of M.A.C.
Architects Ltd.