



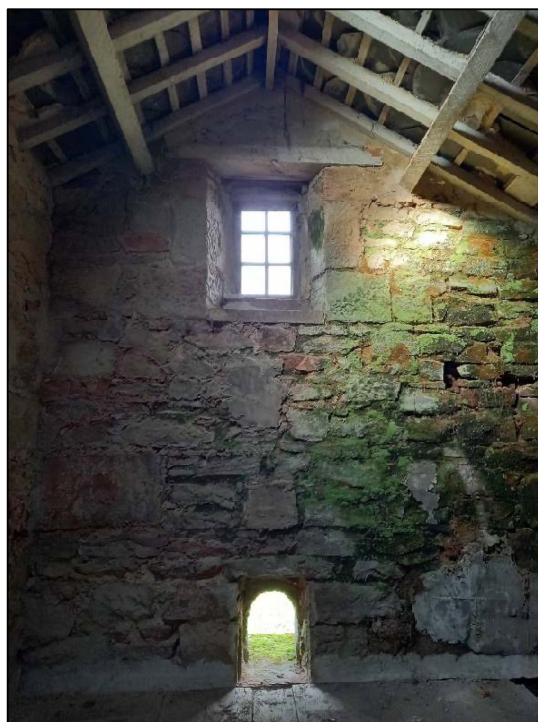
**Plate 57:** Internal side of door, Room F, northern projection



**Plate 58:** Internal side of door, Room F, northern projection, showing strap hinge and round opening



**Plate 59:** Detail of wooden ladder, Room F in northern projection (Scale = 2m)



**Plate 60:** View looking north showing the upper floor of the northern projection



**Plate 61:** Detail of handle and lock, with remains of key, door into Room G, southern projection



**Plate 62:** Detail of wooden ladder, Room G in southern projection



**Plate 63:** Upper floor of the southern projection showing the doorway set in a boarded partition



**Plate 64:** Upper floor of southern projection showings wooden stairs to the pigeon loft





**Plate 65:** Wooden stairs to pigeon loft, accessed from the upper floor of the southern projection



**Plate 66:** Detail of door to pigeon loft, as seen from the wooden stairs from the southern projection



**Plate 67:** Detail of pigeon loft located at the southern end of the barn



**Plate 68:** Detail of pigeon holes, southern gable of the barn



**Plate 69:** Detail of large doorway into the first floor of the barn, west elevation



**Plate 70:** Detail of strap hinge, door to first floor of barn, west elevation



**Plate 71:** Detail of roof structure, first floor of barn



**Plate 72:** View looking south showing the first floor of the barn. The pigeon loft is located between the furthest roof truss and the south gable wall





**Plate 73:** View looking east showing the doorway and ventilation slits in the east elevation, first floor of barn



**Plate 74:** Detail of door in east elevation, first floor of barn (Scale = 2m)



**Plate 75:** Possible reset stable dividers located on the first floor of the barn (Scale = 1m)



**Plate 76:** Possible reset stable dividers, possibly utilised as storage bays, first floor of barn (Scale = 1m)



**Plate 77:** View looking west showing the ancillary buildings constructed to the west of the earlier barn



**Plate 78:** South elevations of the ancillary buildings



**Plate 79:** North elevation of one of the ancillary buildings (closest to the barn) (Scale = 2m)



**Plate 80:** View looking east showing the ancillary building closest to the barn, showing the long beams





**Plate 81:** View looking south showing the interior of the ancillary building, possible horse engine house



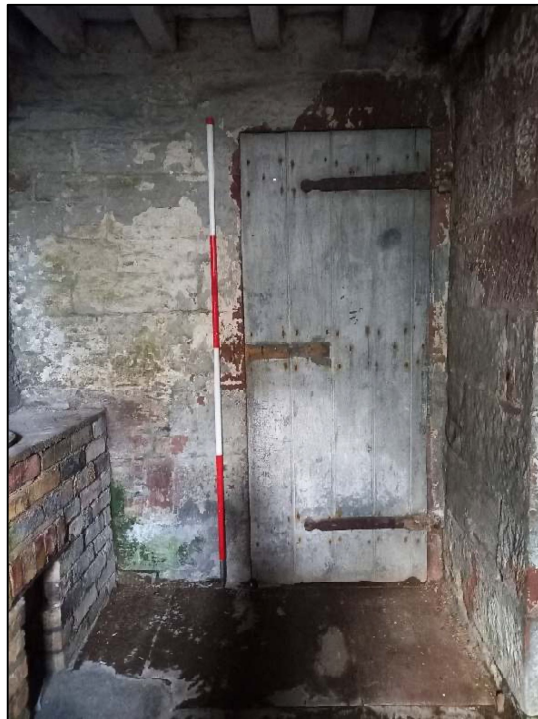
**Plate 82:** View looking north showing remains of metalwork in the floor of the ancillary building  
(Scale = 1m)



**Plate 83:** West wall of the ancillary building showing the three double doorways (Scale = 2m)



**Plate 84:** Detail of one of the large doorways in the west wall of the ancillary building



**Plate 85:** Doorway in north wall of Wash House, provides access to Room G (Scale = 2m)



**Plate 86:** Large doorway in the east wall of the Wash House



**Plate 87:** West wall of Wash House showing sandstone shelving and brick wash copper (Scale = 1m)



**Plate 88:** East wall of the addition (south side of Room G) showing ventilation slits





**Plate 89:** View looking west showing the roofless ancillary building, with evidence for three phases of construction visible in the stonework



**Plate 90:** Detail of doorway in the north wall of the ancillary buildings (Scale = 2m)



**Plate 91:** View looking south towards the garden through one of the rooms in the ancillary buildings



**Plate 92:** Detail of doorway to garden from the ancillary buildings (Scale = 2m)



**Plate 93:** South elevation of part of the ancillary buildings showing the scarring of a former glass house



**Plate 94:** View looking east showing the west end of the ancillary buildings





**Plate 95:** North wall of ancillary buildings, west end, showing evidence for former boundary wall prior to being increased and gabled



**Plate 96:** View looking west showing the north boundary wall of the walled garden with the gate at the end providing access to a field





**Plate 97:** South elevation of the Hennerly-Piggery



**Plate 98:** View looking north-east showing the Hennerly-Piggery, with Morass Road behind



**Plate 99:** East elevation of the Hennerly-Piggery facing onto Morass Road



**Plate 100:** Detail of access door, south elevation of Hennerly-Piggery (Scale = 1m)



**Plate 101:** Detail of feeding hatches, south elevation of Hennery-Piggery (Scale = 1m)



**Plate 102:** Internal view of one of the feeding troughs, Hennery-Piggery (Scale = 1m)





**Plate 103:** Detail of flagged floor of one of the pig sties in the Hennery-Piggery



**Plate 104:** Detail of low doorway into one of the sties, Hennery-Piggery (Scale = 1m)





**Plate 105:** Stone staircase at the west side of the Hennery-Piggery (Scale = 1m)



**Plate 106:** Detail of first floor doorway, west gable of the Hennery-Piggery (Scale = 1m)



**Plate 107:** View looking east showing the first floor of the Hennerly-Piggery

Barn at Barwickstead, Beckermeth, Cumbria  
Green Swallow North Limited  
Level 3 Historic Building Survey

