

Ecology Report: Retention of a Three Storey Modular Building**Prepared by** Sellafield Ltd**Document Reference:** PLC_BCC_2275**Ecology Report**

This report has been compiled by the Sellafield Ltd Spatial Strategy and Planning Manager (Site Ecological Subject Matter Expert) and checked by a Sellafield Ltd Environmental Specialist

The existing three storey modular building (outlined red in Figure 1) is located in the north east corner of the Sellafield site.

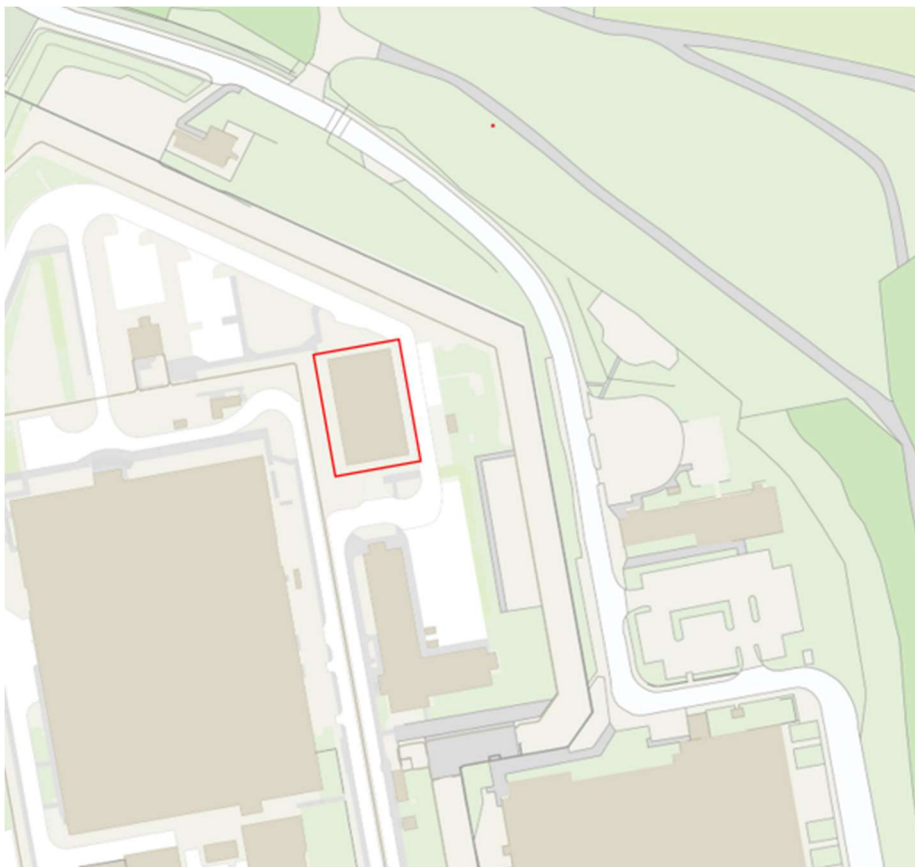


Figure 1: Location and immediate environs of Three Storey Modular Building

This report considers the ecological impacts of the construction of this facility in relation to the ecology of the development site and its surroundings. The development plot was included in a site wide Preliminary Ecological Appraisal to provide an ecological baseline in 2022. Ecological field surveys associated with this work, following the Phase 1 Habitat Survey Methodology were undertaken in February 2022 by Middlemarch Environmental Ltd. The Phase 1 Habitat Map (Figure 2) documents the ecological status of the development area prior to commencement of work. Aerial photography from 2021 (Figure 3) is also illustrative of ecology present prior to commencement of development.

Ecology Report: Retention of a Three Storey Modular Building

Prepared by Sellafield Ltd

Document Reference: PLC_BCC_2275

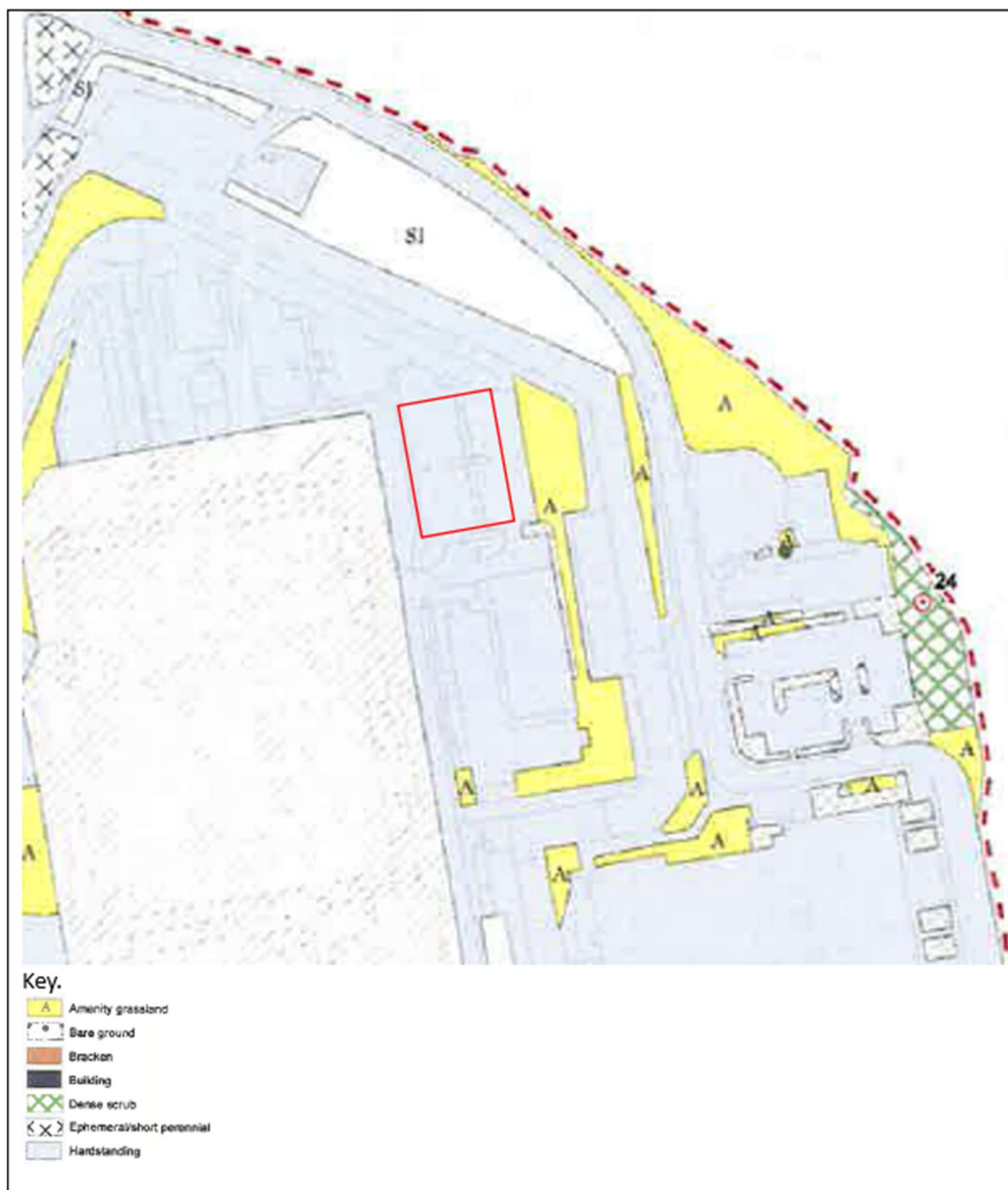


Figure 2: Phase 1 Habitat Map of the development plot and immediate environs. The red dashed line denotes the northern extent of the survey and the large hatched shape is a fenced area that was not subject to survey.

Ecology Report: Retention of a Three Storey Modular Building
Prepared by Sellafield Ltd
Document Reference: PLC_BCC_2275


Figure 3. Aerial photograph from 2021 showing the environs of the development prior to works commencing.

As can be seen from comparison of the figures 1-3 presented, the development has taken place on land that is characterised in the Habitat survey as hardstanding and was previously used as a carpark. No phase 1 classified habitat has been displaced by this development. Adjacent areas of habitat comprise amenity grassland and proximity of the development to this is not considered impactful. More significant habitats that are identified in the Habitat map (Ephemeral/short perennial, semi-improved grassland and dense scrub) have no connectivity with the development plot as the Sellafield Site perimeter fence acts as a barrier to dispersal of, for example, reptiles, amphibians and terrestrial mammals. The fences near the development can clearly be seen on Figure 3. Ground nesting birds (Oyster catcher) have been known to utilise “islands” in the carpark as nest sites, but this has been an occasional rather than routine annual occurrence. Other locations on Sellafield site are utilised by Oyster catchers on a more routine basis and as such loss of this potential nest location is not considered significant.

The target note “24” on Figure 2 relates to the condition assessment of the dense scrub in that location. The ecological condition of the scrub is rated as “poor” this is due to:

- Lack of age range among the species present;

Ecology Report: Retention of a Three Storey Modular Building**Prepared by** Sellafield Ltd**Document Reference:** PLC_BCC_2275

- Poor edge development to the scrub; a lack of more open glades within the scrub and
- Despite an absence of “invasive” species, the presence of undesirable species (less than 5% ground cover).

As discussed above this scrub has very poor connectivity to the development plot.

Summary

Potential ecological impacts from the development of the Three Storey Modular Building are limited the potential disturbance of nesting birds. This is a transient potential impact and one that was managed by employing standard construction management approaches, which are routine on Sellafield site. There is no evidence that this impact was realised during development works.