



## HH CONSTRUCTION (GROUNDWORK CONTRACTORS) LIMITED

12 Methley Road, Castleford, WF10 1LX  
www.hhconstructionltd.com info@hhconstructionltd.com



### RAMS Package – Ducting

This risk assessment and method statement have been compiled using industry knowledge, client information and legal guidance, regulations and customer requirements. The document is not definitive in that; it should be read at a pre-work commencement briefing and challenged. Any alterations can be made on the rear of the document, and counter signed (initials). The document should be continually reviewed at site level to ensure its validity.

<b>Client</b>	Aldi / Projekt	<b>Contract No.</b>	HH 592	<b>Date</b>	09/05/2025
<b>Site Address</b>	Aldi Whitehaven, Preston Road, CA28	<b>Site Manager</b>			
<b>Work Area</b>	Site				
<b>HH Contracts Manager</b>	Paul Handforth	<b>Contact No.</b>	07539 268537		
<b>HH Site Manager</b>		<b>Contact No.</b>			

#### 1. Programme

<b>Start Date</b>	26/05/2025	<b>Duration of Works</b>	TBC	<b>Working Days</b>	Monday – Friday
				<b>Working Hours</b>	08:00-17:30

#### 2. Actions prior to commencing work activities

Prior to commencing work on site, all our operatives will report to the site office on their first day to receive a H&S Safety induction and sign in / out each and every time they arrive or leave the site. The site manager working with our foreman shall maintain open lines of communication to ensure that safety and quality standards are being met and to ensure the areas are segregated from other contractors to ensure the areas remain clear during the specified ground work tasks.

#### 3. Description of works

HH Construction LTD have been appointed to carry out the following work activities:

- Installation of ducting across all site.

#### 4. Competence/Resources

HH Construction Ltd will employ sufficient numbers of ground workers or machine operators as required to enable completion of works within contract specification and times. The operatives will all hold the appropriate skills and qualifications to undertake these works:

- All plant and machinery operators will have been assessed under the CPCS and NPORS Registration Scheme and hold trained operator or competent operator cards.
- Training certificates will be available in the site file.
- Site managers hold current SMSTS & First aid
- All HH Construction employees will hold a current CSCS or CSCS Affiliated card.

#### 5. Plant/Equipment/Tool requirements

All plant/equipment/tools are subject to thorough examinations under the Provision and Use of Work Equipment Regulations 1998.

Type	Plant No.	Inspection Date



## HH CONSTRUCTION (GROUNDWORK CONTRACTORS) LIMITED

12 Methley Road, Castleford, WF10 1LX  
www.hhconstructionltd.com info@hhconstructionltd.com



### 6. Personal Protective Equipment (PPE) Required (Please ✓)

							Other	Other
Hardhat BS EN 397	Hi-Vis BS EN 471-2	Footwear BS EN345-1	Gloves BS EN 388	Glasses BS EN 166 B	Hearing BS EN 352-1	Respiratory EN149 FFP3		
<b>MANDATORY</b>	<b>MANDATORY</b>	<b>MANDATORY</b>						

Mandatory minimum **3 points** PPE at all times. Additional PPE may be required as directed on the site-specific Risk Assessments. All PPE issued will be recorded on the issue record and where necessary, operatives will receive suitable instruction and training on its use.

### 7. Welfare requirements

Provided by Principal Contractor in compliance with Schedule 2 of the 2015 CDM regulations.

HH Construction will provide their own site cabin, plant/equipment safe as per Preamble document – HHRAMS 00.

### 8. Emergency Procedures (indicate whether provided by PC, HH or both – see 1. Sequence of works)

First aid cover and facilities will be provided by the main contractor in addition to our own trained first aider, these requirements will be communicated to the workforce during the site health and safety induction.

Emergency procedures will be designed and implemented by the main contractor; these will be communicated to the workforce during the site induction.

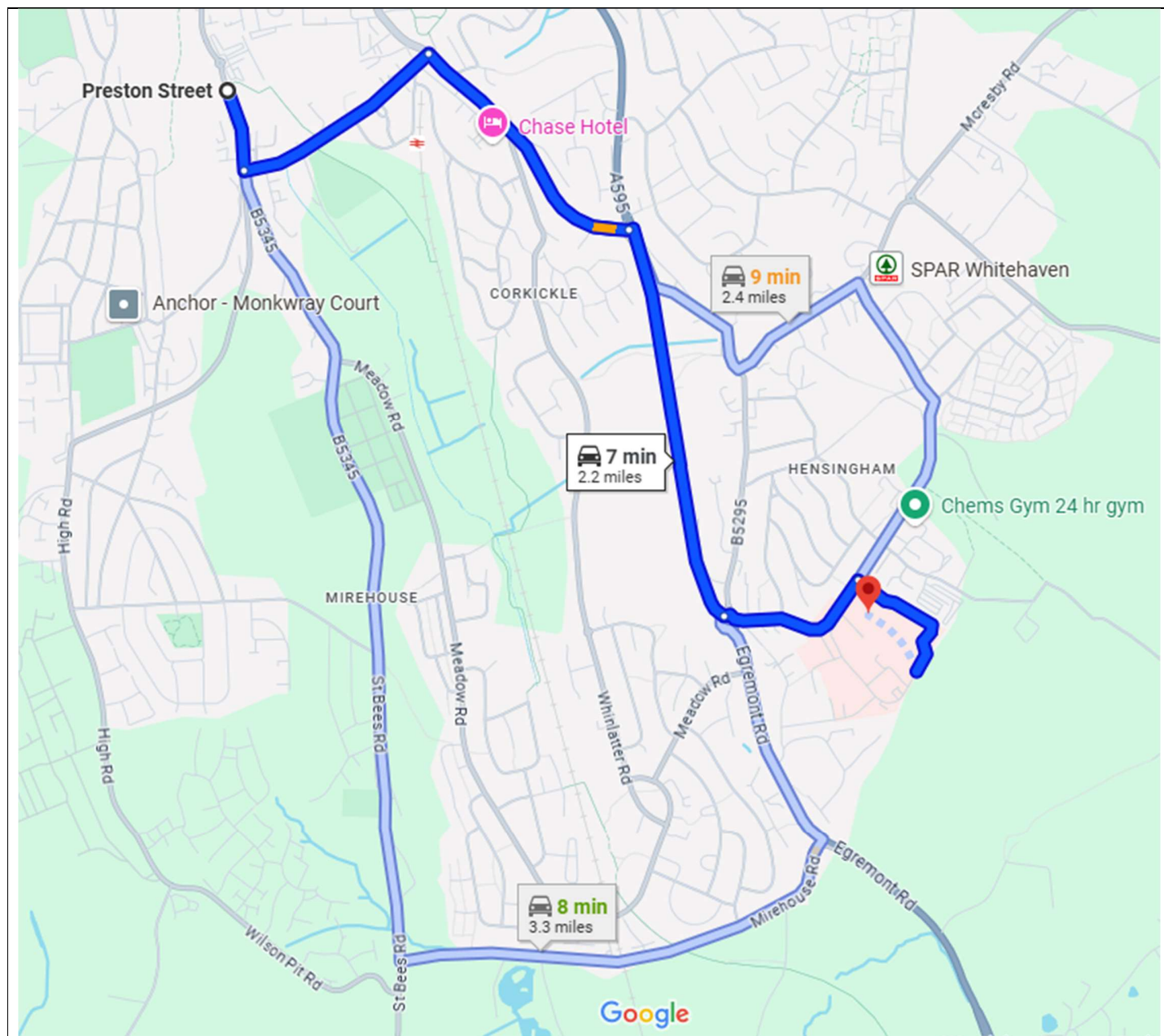
			Other
PC	Both	HH	
<b>HH First Aider</b>	Paul Handforth		
<b>Nearest Hospital (add directions below)</b>	West Cumberland Hospital - Homewood Rd, Hensingham, Whitehaven CA28 8JG		

- ↑ Head south on Preston St/B5345 towards Ginns
  - Continue to follow B5345
- ↶ Turn left onto Coach Rd/The Rise
  - Continue to follow Coach Rd
- ↶ Turn right onto Corkickle/A5094
  - Continue to follow A5094
- ↶ Turn right onto Hensingham Byp/A595
- ↻ At Hensingham Roundabout, take the 2nd exit onto Homewood Rd
- ↶ Turn right



## HH CONSTRUCTION (GROUNDWORK CONTRACTORS) LIMITED

12 Methley Road, Castleford, WF10 1LX  
www.hhconstructionltd.com info@hhconstructionltd.com





## HH CONSTRUCTION (GROUNDWORK CONTRACTORS) LIMITED

12 Methley Road, Castleford, WF10 1LX  
www.hhconstructionltd.com info@hhconstructionltd.com



### 9. Waste and environmental impacts

Our scope of works will not have any environmental impacts. We will adhere to the Principal Contractors waste procedures and any waste will be disposed of in the designated site skips.  
All materials imported and exported to site shall adhere to the WMP and ensure all information is recorded

### 10. COSHH

A thorough risk assessment must be completed for all hazardous substances under the Control of Substances Hazardous to Health Regulations 2002.

Works to be carried out are associated with the following hazardous substances

Concrete <input type="checkbox"/>	Cement <input type="checkbox"/>	Hydraulic Oil <input type="checkbox"/>	Petrol <input type="checkbox"/>	Diesel <input type="checkbox"/>	Grout <input type="checkbox"/>	Tarmac <input type="checkbox"/>
Line Marker <input type="checkbox"/>	Grease <input type="checkbox"/>	Aggregates <input type="checkbox"/>	Adolease <input type="checkbox"/>	Adblue <input type="checkbox"/>	Pipe Lubricant <input type="checkbox"/>	2-Stroke Oil <input type="checkbox"/>
Release Agent <input type="checkbox"/>	Sealant <input type="checkbox"/>	pH Neutraliser <input type="checkbox"/>	Foam <input type="checkbox"/>	Emulsion <input type="checkbox"/>	Adhesive Tape <input type="checkbox"/>	Bitumastic Paint <input type="checkbox"/>
Bituminous Materials <input type="checkbox"/>	Thermoplastic Road Marking <input type="checkbox"/>	P.S Mortar <input type="checkbox"/>	Construction Dust <input type="checkbox"/>	<input type="checkbox"/>	<input type="checkbox"/>	<input type="checkbox"/>

To be read in conjunction with COSHH Risk Assessment no.

•

### 11. Permits required (Please ✓)

Permit to work	Confined Spaces	Permit to Dig	✓
Hot-work Permit	Out-of-hours Work	Other	

### 12. Temporary works

HH Construction do not design any temporary works, and work underneath external designers. Contact information for temporary works relevant to the task below.

TW Design	Contact Number
TWD Checker	Contact Number
TW Coordinator	Contact Number
TW Supervisor	Contact Number

### 13. Lifting operations

All lifting operations conducted by HH Construction will be completed in line with the 'Schedule of Common Lifts' within the Lifting Operations Policy – HHC-P&P023.

A bespoke lift plan must also be completed showing details of the lift including location, machine used, accessories used and materials to be lifted.

All lifting equipment is subject to thorough examinations under the Lifting Operations and Lifting Equipment Regulations 1998 at the specified intervals:

- 6 months, for lifting equipment and any associated accessories used to lift people.
- 6 months, for all lifting accessories.
- 12 months, for all other lifting equipment.

Appointed Person	Contact Number
------------------	----------------



## HH CONSTRUCTION (GROUNDWORK CONTRACTORS) LIMITED

12 Methley Road, Castleford, WF10 1LX  
www.hhconstructionltd.com info@hhconstructionltd.com



### 14. Scope of works

In order to ensure that the works are carried out in a way which minimises the risk to the safety and health of both workers and others affected by the work activities, the following measures will be implemented and followed. If at any time this sequence is no longer relevant, works must cease immediately, and the supervisor informed.

The works will then be continually assessed and where necessary suitable amendments made to the risk assessment and this method statement. Any subsequent changes made must be communicated to the workforce.

Order of works:

- Pre-start safety checks.
- Securing the work area.
- Operation.
- Additional Conditions.

### 15. Roles and Responsibilities

#### 15.1 Site manager:

- Ensure the risk assessment and method statement have been communicated to those involved in the work.
- Monitor the works to ensure the risk assessment and SSW remains suitable and sufficient.
- Ensure a Pre-Start induction is given to all workers involved in the task.
- Ensure all the relevant inspection records are signed and completed.
- Ensure that all the Equipment used for the task is tested and certificates are checked.

*NB: A Pre-Start Briefing must be given by the site manager prior to work commencing. The talk must cover the requirements of this Method Statement, and site hazards or work restrictions for the day and any other relevant instructions.*

#### 15.2 Site Operatives:

- Ensuring they take reasonable care of their own safety, and or any other person(s), who may be affected by their acts or omissions at work.
- Not misusing or interfering with anything provided with regard to safety, health, welfare, and fire arrangements. (Employees misusing personal protective equipment will be subject to disciplinary action by the Company). Ensuring they use and/or wear PPE as instructed.
- Looking after and maintaining equipment issued and requesting replacements when necessary.
- Complying strictly to all site rules and safe working procedures and only operate plant and equipment for which they are trained.
- Using the correct tools and equipment for the task, reporting defective equipment.
- Follow the safety systems of work detailed in any risk assessment or method statement.
- Report all accidents / incidents to the appropriate persons.
- Comply with both the company rules and any client site rules.



## HH CONSTRUCTION (GROUNDWORK CONTRACTORS) LIMITED

12 Methley Road, Castleford, WF10 1LX  
www.hhconstructionltd.com info@hhconstructionltd.com



### 16. Methodology

#### 16.1 Pre-Start checks

Prior to any work commencing, pre-use inspections must be taken and recorded to ensure the equipment is safe for use and fit for purpose. All equipment must be used for their intended purposes.

#### 16.2 Securing the work area

- Access and egress points will be agreed with the client prior to work commencing. General restrictions apply with access for all deliveries including plant and materials, i.e., not blocking existing driveways or access points, not parking on side streets or restricted roads and use of banksman as required to ensure safe access/egress.
- Normal access to the site will be as directed by the Site Manager or Client.
- Interlocked pedestrian barriers will be used to secure the work area will be made secure in order to prevent the entry of unauthorised personnel.
- Pedestrians are to be segregated from the works area using suitable, barriers, fencing, signage, and cones as required.
- All personnel are to report to the site office, sign in daily.

#### 16.3 Service location

Services will be located observing the following points:

##### 16.3.1 Pre-Use Inspections of Cable Detecting Equipment

- All Cable Detecting Equipment (CAT) must have an up-to date Calibration Certificate; this must be checked by the Site Manager before the CAT is used. Where possible a Genny will be used with the CAT in order to locate any services more accurately.
- The CAT (and Genny) must be inspected for signs of damage or defect, any issues must be recorded on the "Small Tools Register" and the equipment not used, it must be sent away for repair and re-calibration.

##### 16.3.2 Identifying the location of a Service

- Where a service is suspected or identified, then the positions of these will be marked using spray paint, barriers, road-cones or similar which will identify the route of the service, this will provide a visual aid for all persons on site as to the location of the services.
- A safety zone of at least 5m away from any detected services will be marked out in an appropriate manner. See **16.4.1 Excavation Safety** for further measures.

##### 16.3.3 CAT and Genny method

- When scanning the area with the CAT the user should walk the whole area in a "grid" pattern this will ensure that the whole area is checked. Where a Service is identified the sensitivity control should be turned so that it narrows the area of detection which will help to pin-point the exact location of the Service.
- The Genny should be attached to the service if a connection point can be found, with the Genny turned on this will send a repeating signal through the service which can then be detected by the CAT.
- If a connection point cannot be found then the Genny should be placed directly over the service and turned on this will send a signal through the ground which may then be picked up by the service which in turn will then transmit a signal.





## HH CONSTRUCTION (GROUNDWORK CONTRACTORS) LIMITED

12 Methley Road, Castleford, WF10 1LX  
www.hhconstructionltd.com info@hhconstructionltd.com



### 16.4 Excavation works

#### 16.4.1 Excavation safety

- Where practicable, the use of a Vac-Ex must be used over any mechanical digging aids. RAMS for use of Vac-Ex will be provided separately or by the sub-contractor. The use of an air or water lance may be implemented to aid in disrupting earth.
- Excavation works using the 360° excavator shall only commence once the area has been scanned with cable detecting equipment and the use of a Vac-Ex has been carried out to locate any known or suspected buried services. Where services are found and revealed, then mechanical equipment will not be used within 500mm of a service.
- Once the excavator has excavated to 500mm above/aside known services, the use of a Vac-Ex should be implemented to fully expose services. Hand digging around known services can only be completed once authorisation has been received from HH Health & Safety Manager or HH Construction Manager.
- Whilst the ground is being removed a banksman must be present in order to guide the excavator operator and to observe the dig looking out for services and obstructions.

**NB: See Safe Digging Practices flowchart below for further information.**

- An on-site assessment of the ground conditions and the depth is required of the excavation to determine whether it is necessary to have to use any kind of ground support.
- Ground support will be in the form of stepping back the excavation (1m back for every 1m in depth), or trench support systems to ensure that the excavation remains stable and safe for operatives working in and around.
- Steel Pedestrian Barriers will be used for edge protection these will be placed a minimum of 2mtrs from the excavation edge, where practical. If an excavation is to be left exposed overnight, double clipped heras fencing must be installed.

##### 16.4.1.1 Permit to Dig

All works must be carried out in accordance with the Principal Contractors permit to dig procedure.

- Relevant service drawings must be issued prior to works commencing; these drawings must be reviewed, and the site surveyed in order to identify the positions of any services which may be present, i.e. the location of any structures such as joint boxes and valve chambers can be verified visually.
- Underground services such as pipes, cables, ducts etc., must be located using a CAT and Genny prior to excavation commencing.

#### 16.4.2 Access to excavations

- Where practical Stepsafe systems are to be used or steps will be cut into the excavation side to allow safe access and egress, where this method cannot be adopted safely then a ladder will be used.
- Where a ladder is used the following requirements must be implemented:
  - i. The ladder must be of a sufficient length so that it protrudes past the landing by at least 1mtr
  - ii. It must be set at the correct angle (1 in 4 or 75degrees)
  - iii. It must be inspected daily and a record of the inspection made weekly
  - iv. It must be secured at both the top and bottom to prevent any movement
  - v. It must be placed on firm level ground
  - vi. It must not be used by workers carrying tools, materials or equipment
  - vii. Workers must have at least three points of contact at all times
  - viii. It must be placed sideways onto the landing point so that workers do not have to stride over it to access the landing.



## **HH CONSTRUCTION (GROUNDWORK CONTRACTORS) LIMITED**

12 Methley Road, Castleford, WF10 1LX  
www.hhconstructionltd.com info@hhconstructionltd.com



### **16.5 Use of mobile plant**

- Excavation and transportation of bulk material will be undertaken using a combination of hand digging (near services), 360° excavator and dumper for material transportation.
- Appropriate safety measures (such as the use of barriers) will alert plant operators to the presence of excavations and help to prevent plant from running too close to them.
- The following controls must be implemented when using mobile plant:

#### **16.5.1 Pre-use plant inspections**

- Both the Dumper and Excavator must be subject to a pre-use inspection, to check for signs of damage or defects such as:
  - Inoperative brakes
  - Punctures
  - Hydraulic leaks
  - Broken mirrors / glass
  - Defective levers
  - Defective steering
  - Material failure
- This list is not exhaustive, and each item of plant may have additional items to check. The “Daily Plant Inspection Form” contains a list of items to check, this must be completed and signed on a daily basis by the plant operator.
- Any defects are to be reported immediately to the Site Supervisor and the item concerned not used until a suitable repair has been carried out.
- Windows, Mirrors & Reversing Cameras must be adjusted to suit the operator so that all-round visibility is achieved and cleaned regularly in order to prevent a build-up of dirt and to give suitable visibility.

#### **16.5.2 Transporting the spoil / material**

- The dumper driver must also ensure that he dismounts from the dumper and stands clear of the area when loading is taking place as there is a risk that he could be struck by the excavator or any spoil as it is loaded.
- When the dumper driver is travelling across site the speed of the dumper must be kept to a minimum at all times.
- Once the dumper is loaded the dumper driver must ensure that the seat belt is worn and that the flashing beacon is operating, the speed of the dumper must be kept to a minimum at all times and the driver must be constantly checking his surroundings.
- The excavator operator must also constantly check his surroundings and must not track the excavator until he has slewed the excavator so that he can check his surroundings for workers and /or other plant.
- When loading directly into a wagon the wagon must be banked to the designated loading area and the driver must stay in the cab, the 360 operator will excavate the area and load into the back of the wagon. Once loaded the wagon will be directly safely from site.

#### **16.5.3 Loading the spoil onto the dumper or wagon**

- As the ground is excavated the spoil will be placed into the dumper or wagon until it is fully loaded, it should not be loaded to the extent that spoil is falling out of the skip as it is transported, this could result in workers or a member of the public being struck by falling material.





## HH CONSTRUCTION (GROUNDWORK CONTRACTORS) LIMITED

12 Methley Road, Castleford, WF10 1LX  
www.hhconstructionltd.com info@hhconstructionltd.com



- During loading, the dumper driver must dismount the dumper and stand clear of the loading area, i.e. in a safe position. The excavator operator also has a responsibility not to load the dumper until the driver has dismounted and stood in a safe area.

### 16.5.4 Changing excavator attachments

- When any attachments are changed on the excavator the quick hitch pin must be available and secured in place using the safety clip to prevent it from becoming detached.
- It is the excavator operator's responsibility to ensure the safety pin is in place & secured.
- Checking the quick hitch device must be part of the pre-use inspections and should be regularly maintained to ensure correct working, any defect must be reported immediately. The excavator should not be used until a suitable repair has been carried out, a "Thorough Examination" of the quick hitch must then be undertaken and a certificate issued before it is used.

## 16.6 Ducting

### 16.6.1 Breaking out existing tarmac if required.

- The existing tarmac surface will be cut with a petrol-driven road saw. During the operation of this item, all appropriate PPE (eye protection, gloves, boots, hearing protection, dust masks) will be worn at all times and dust suppression measures will be instigated.
- The existing tarmac surface will be removed either by hand or using the excavator (depending on the circumstances) and then excavated to create the trench for the new kerbs. The tarmac will be disposed of in accordance with the site waste procedure as specified by the main contractor, using the dumper to transport it.
- Once the tarmac has been removed, the area will be appropriately prepared (compacted etc.) in order to receive the bed for ducting.
  - When using a wacker plate, operatives will refer to the relevant HAVS and Noise assessments for the tool provided. If necessary, the use of the wacker plate will be alternated between operatives to ensure that individual exposure to HAVS is kept to a minimum.

### 16.6.2 Excavation safety

- Where practicable, the use of a Vac-Ex is preferred over the use of any mechanical digging aids. RAMS for use of Vac-Ex will be provided by contractor.
- Excavation works using the 360° excavator shall only commence once the area has been scanned with cable detecting equipment and hand digging has been conducted to locate any known or suspected buried services. Where services are found and revealed, then mechanical equipment will not be used within 500mm of a service.
- Whilst the ground is being removed a Banks Man must be present in order to guide the excavator operator and to observe the dig looking out for services and obstructions.

**NB: See Safe Digging Practices flowchart below for further information.**

#### 16.6.2.1 Loading the spoil onto the dumper (if applicable)

- As the ground is excavated the spoil will be placed into the dumper until it is fully loaded. It should not be loaded to the extent that arisings are falling out of the bucket as it is transported, this could result in workers being struck by falling material.
- During loading the dumper operator must stop the machine, remove the keys, and stand clear of the loading area in a safe position. The excavator operator also has a responsibility not to begin to load the dumper until the operator has moved and stood in a safe area.



## **HH CONSTRUCTION (GROUNDWORK CONTRACTORS) LIMITED**

12 Methley Road, Castleford, WF10 1LX  
www.hhconstructionltd.com info@hhconstructionltd.com



### **16.6.2.2 Changing excavator attachments**

- When any attachments are changed on the excavator the quick hitch pin must be available and secured in place using the safety clip to prevent it from becoming detached.
- It is the excavator operator's responsibility to ensure the safety pin is in place & secured.
- Checking the quick hitch device must be part of the pre-use inspections and should be regularly maintained to ensure correct working, any defect must be reported immediately. The excavator should not be used until a suitable repair has been conducted, a "Thorough Examination" of the quick hitch must then be undertaken and a certificate issued before it is used.
- When changing attachments on the excavators, the appropriate safety and environmental control measures will be installed in order to prevent any incidents. Drip trays will be used when attachments are being changed. Spill kits will also be readily available.

### **16.6.3 Laying bedding materials**

- A layer of granular bedding (to the specified depth) will be laid in the bottom of the trench and will be suitably compacted.

### **16.6.4 Installation of Ducting**

- The ducting will then be laid, and the draw cords pulled through to enable the installation of services at a later date.
- The lengths of ducting will be joined correctly (as per the manufacturer guidance).
- Where it is necessary to cut any ducting, a hand saw will be used.
- The ducting will be installed in accordance with the manufacturer's instructions.

### **16.6.5 Backfilling the trenches**

- Once the ducts have been laid then the specified depth of cover of granular material will be laid on top. This will be done with extreme care with an excavator or by hand so as to avoid damaging the newly laid services. Marker tape will be laid in the cover to highlight the presence of buried services. The cover will then be levelled by hand using a shovel.
- The backfill shall be placed in the trench in layers of up to 150mm using the excavator or by hand and compacted. This will be conducted until the correct level has been reached.

#### **16.6.5.1 Backfill compaction**

- The material shall be compacted in layers using appropriate compaction equipment with a sufficient number of passes to achieve compaction.
- Due to the elevated levels of noise and vibration generated, use should be alternated between workers to reduce personal exposure. Users must ensure that they wear the correct PPE, i.e., gloves, ear defenders. The hands should be kept warm and dry at all times and each person who is to use the plate should read, understand, and comply with the relevant HAV assessment.

### **16.7 Additional conditions**

#### **16.7.1 Danger to operatives on site.**

- All personnel on site will be aware of the dangers of working close to heavy plant and with hot bituminous materials and will wear the appropriate PPE, i.e.: safety footwear, gloves (heat resistant), high visibility clothing, goggles and hard hats as required.
- Only competent trained persons will operate the plant and equipment required.



## HH CONSTRUCTION (GROUNDWORK CONTRACTORS) LIMITED

12 Methley Road, Castleford, WF10 1LX  
www.hhconstructionltd.com info@hhconstructionltd.com



- Footplates/cover plates will be kept clean and clear of materials at all times.
- Operators of the machine will be reminded of the dangers of walking on metal surfaces and will be particularly cautious when the surfaces are wet.
- All personnel will be made aware of hot surfaces on the machine and will be wearing Heat Resistant gloves and footwear when appropriate.
- Personnel operating machinery will remain within isolated areas, clear of site traffic.
- All personnel must keep clear of moving parts, e.g.: augers, tampers and flight bars conveyor systems and rollers.
- When marshalling the lorry into position banksman must stand at the side of the plant and away from the direction of the vehicle.
- The driver of the plant will position according to relevant site line for a better all-round observation.
- Fire extinguishers will be kept on the machine at all times.
- Gas bottles for the plant will be kept in a safe place stored as per the requirements of the Dangerous Substances Regulations.

### **16.7.2 Danger to Pedestrians, Public and Children where applicable.**

- Ensure no pedestrians or unauthorised personnel enter the area around the plant or operations.
- Ensure adequate guarding and signage is in place prior to commencement of operations and continue to monitor during day.
- If unauthorised access is gained, end all operations promptly and report to supervisor/manager immediately to enable the situation to be handled affectively.

### **16.7.3 Working with vibrating plant/equipment**

- When using vibrating equipment, operatives will ensure that they have understood the relevant HAVS assessment for the plant to be used.
- The HAVS assessment will detail what the maximum amount of time that an operative can use a certain item of equipment before the exposure limits are reached.
- In order to minimise the effects of vibration, operatives will ensure that they alternate the use of the vibrating equipment between themselves to make sure that no one individual is exposed to excessive levels of vibration.
- The HAVS assessment will also detail the appropriate PPE that must be worn when using the item of plant/equipment (e.g., heavy gloves, safety boots etc.) and also the correct operational procedures that should be followed (e.g. taking frequent breaks and not smoking as it affects blood circulation, increasing the risk of suffering from the effects of vibration etc.).

### **16.7.4 Construction dust**

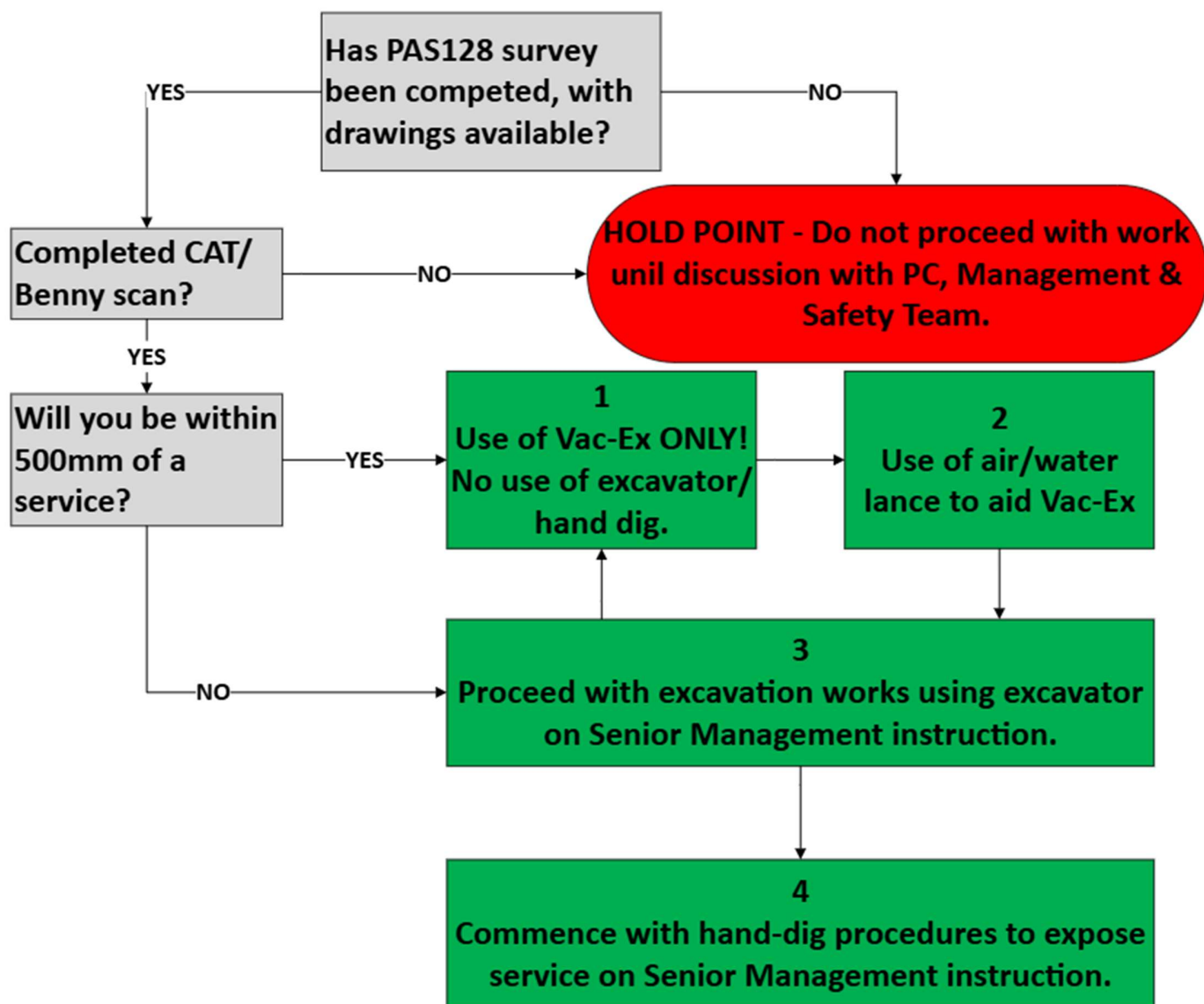
Silica dust will be generated when working in construction, specifically respirable crystalline silica (RCS). This is a fine dust generated from materials like rock, sand, and concrete, and can pose serious health risks if inhaled. Prolonged exposure can lead to silicosis, a lung disease, and potentially increase the risk of lung cancer and other respiratory illnesses.

- Assessment of workload to determine those activities that may generate dust/Fume
- COSHH data sheets checked for those materials producing dust and fumes, any toxic material identified followed by an assessment to establish, who is exposed, what the exposure risk is and where the work shall be completed.
- Dust emissions to be minimised and/or contained to boundaries of the construction site, e.g. re-specifying work to eliminate or reduce dust hazards by either;
  - Dampening work before or during mixing and any sanding down of floor areas.
  - Dust suppression to be used on equipment where possible.
- All disposable dust masks to be FFP3 type (minimum)
- All operatives wearing or having the need to wear disposable masks must be face fit tested.



## HH CONSTRUCTION (GROUNDWORK CONTRACTORS) LIMITED

12 Methley Road, Castleford, WF10 1LX  
www.hhconstructionltd.com info@hhconstructionltd.com





# HH CONSTRUCTION (GROUNDWORK CONTRACTORS) LIMITED

12 Methley Road, Castleford, WF10 1LX  
www.hhconstructionltd.com info@hhconstructionltd.com



Nature of Work	Ducting installation				Ref No.	HHRAMS 08		Contract No.	HH592
Client/Address	Aldi/Projekt - Aldi Whitehaven, Preston Road, CA28					Review Date	Prior to work commencing, then in line with any significant changes.		
Contract Manager	Paul Handforth				Contact Number		07539 268537		
Site Manager					Contact Number				
Persons at Risk	Employed ✓	Other Workers ✓	Clients Employees ✓		Members of Public			Vulnerable Persons	

## Personal Protective Equipment (PPE) Required (Please ✓)

							Other	Other
Hardhat BS EN 397	Hi-Vis BS EN 471-2	Footwear BS EN345-1	Gloves BS EN 388	Glasses BS EN 166 A	Hearing BS EN 352-1	Respiratory EN149 FFP3		
<b>MANDATORY</b>	<b>MANDATORY</b>	<b>MANDATORY</b>						

## Likelihood

		Likelihood				
		not possible	remote	possible	probable	inevitable
Severity	superficial	1	2	3	4	5
	minor	2	4	6	8	10
	moderate	3	6	9	12	15
	major	4	8	12	16	20
	fatal	5	10	15	20	25

Low Risk	Tolerable Level
Medium Risk	Frequent Monitoring Required
High Risk	Unacceptable – Further Measures Required



## HH CONSTRUCTION (GROUNDWORK CONTRACTORS) LIMITED

12 Methley Road, Castleford, WF10 1LX  
www.hhconstructionltd.com info@hhconstructionltd.com



Hazards	Those at risk	Risk Rating before Controls		Control Measures	Risk Rating After Controls	
		Likelihood	Severity		Likelihood	Severity
Operating plant	All site personal	3	5	<ul style="list-style-type: none"><li>Plant operators must be trained to national plant standards (CPCS/NPORS).</li><li>They must ensure that they constantly check their surroundings and ensure that the plant they are using has been inspected and is safe for use.</li><li>The speed of dumpers must be kept to a minimum at all times and any site speed limits adhered to, this can be achieved by keeping the dumper in one gear as opposed to using all gears.</li><li>The dumper driver must wear a seatbelt at ALL times.</li><li>The dumper driver must dismount and stand in a safe area before the dumper is loaded.</li><li>Bungee cords must be used at all times ensuring that the cord is attached to the key and the driver, keys must never be left in plant when unattended.</li></ul>	1	5
		15			5	
Quick-hitch when changing attachments and manoeuvring around site.	All site personnel	4	4	<ul style="list-style-type: none"><li>All quick-hitch attachments, and the lifting eye, are regularly inspected as part of the vehicle maintenance checks as well as in line with regulations.</li><li>Machine operators should change attachments in safe areas and then test the quick hitch before commencing any work to see that it has hitched correctly.</li><li>All attachments should be crowned (facing the machine cab) when the machine is travelling around site so as not to strike/injury other site operatives.</li></ul>	1	4
		16			4	





## HH CONSTRUCTION (GROUNDWORK CONTRACTORS) LIMITED

12 Methley Road, Castleford, WF10 1LX  
www.hhconstructionltd.com info@hhconstructionltd.com



<b>Use of Dumper</b> around site where other work is underway.	Operative. All site personal.	5 25	5	<ul style="list-style-type: none"><li>• Ensure ROPS is in place when operating dumpers to prevent machine rolling completely.</li><li>• Seatbelts must be worn by operators at <b>ALL</b> times when operating the dumper.</li><li>• Dumper operator must walk the route prior to manoeuvring to ensure hazards are clear.</li><li>• The route should be kept clear of people, equipment, and materials whilst the dumper passes through.</li><li>• The dumper should be under the guidance of a banksman when passing through congested parts of the site and when off-loading into excavations</li><li>• When operating on stockpiles, the dumper must not be used outside the manufacturers guidance whilst on slopes.</li><li>• When tipping over stockpiles/excavations, stop blocks must be used more than 1mtr away from the edge so as not to surcharge the angle of repose.</li></ul>	1	5
<b>Excavations</b> Plant falling into excavations; trapping or crushing – potential for damage to plant or serious injury or death.	Operative. Persons in immediate area.	5 25	5	<ul style="list-style-type: none"><li>• Operators should be aware of their surroundings and should familiarise themselves with the site.</li><li>• Operators should be aware of any excavations occurring in their areas.</li><li>• Where necessary, stop blocks and barriers shall be used to guard the edges of excavations.</li><li>• Ensure excavation barriers are implemented 2mtr away from the edge of the excavation:<ul style="list-style-type: none"><li>○ Steel pedestrian barriers 0 working hours.</li><li>○ Double clipped heras fencing – evenings/overnight.</li></ul></li><li>• Where excavations are open on highways or traffic/pedestrian routes, steel crossing plates rated for the right weight must be used.</li></ul>	1	5



## HH CONSTRUCTION (GROUNDWORK CONTRACTORS) LIMITED

12 Methley Road, Castleford, WF10 1LX  
www.hhconstructionltd.com info@hhconstructionltd.com



Use of Excavator striking other machinery, structures or individuals.	All site personal.	3	5	<ul style="list-style-type: none"><li>Plant operators must be trained to national plant standards (CPCS/NPORS).</li><li>They must ensure that they constantly check their surroundings and ensure that the plant they are using has been inspected and is safe for use.</li><li>The speed must be kept to a minimum at all times and any site speed limits adhered to, this can be achieved by keeping machine at low revs/gears.</li><li>Keys must never be left in plant when unattended.</li><li>All operatives to adhere to machine exclusion zones and ensure not to encroach within a machines working radius. Minimum 3mtr exclusion zone.</li><li>Ensure that all hand signals are agreed, with reference to BS7121, before operations commence.</li><li>Implement use of radio communications where practicable, keeping marshal away from immediate area.</li><li>Keep minimum of 500mm clearance between machine and any structure.</li><li>Implement visible barriers between machine route and any structure as a visual aid for operator.</li></ul>	1	5
		15			5	

Gaining access to and egress from the excavator cab.	Machine operative.	3	3	<ul style="list-style-type: none"><li>The cab must be positioned so that it is parallel with the excavators tracks</li><li>The dedicated handrails and footsteps must be used and must be kept clear of debris, mud and other loose material</li><li>The person must enter and leave the cab facing towards the cab (never have your back towards the cab).</li></ul>	3	2
		9			6	



# HH CONSTRUCTION (GROUNDWORK CONTRACTORS) LIMITED

12 Methley Road, Castleford, WF10 1LX  
www.hhconstructionltd.com info@hhconstructionltd.com



Lifting operations Failure of lifting equipment or accessories	Persons in the work area	3	5	<ul style="list-style-type: none"> <li>All lifting equipment and accessories MUST be inspected before use each time.</li> <li>There MUST be a valid examination certificate for each item this MUST be checked by the site supervisor before the item is used.</li> <li>Any damage or defect found on any item MUST be recorded and withdrawn from service until repaired or disposed of</li> </ul>	1	5
		15			5	
Buried Services when carrying out excavation works.	Those carrying out the works	4	5	<ul style="list-style-type: none"> <li>A permit to dig must be issued by the main contractor before works commence. All those involved in the works must be present when the PTD is issued and sign the permit</li> <li>A pre-Use Inspection of Cable Detecting Equipment must be carried out in order to check for any damage or defect, any found should be reported to the site supervisor and the item not used until and a replacement issued.</li> <li>Cable Detecting Equipment must have an up-to-date Calibration Certificate which should be checked before use, the CAT should also be checked on a live service to ensure it works correctly</li> <li>Picks, Wrecking Bars etc must NOT be used when Hand Digging, only Shovels or Grafts are to be used, these must have insulated handles.</li> <li>Service Drawings must be obtained when the permit to dig is issued, these should be used only as a guide and not reliable upon as accurate information</li> <li>Cable Detecting Equipment must only be used by competent persons. If in doubt as to how the equipment works ASK!</li> <li>Where necessary the Service provider must be contacted, and the service disconnected if possible</li> <li>Hand Digging must be carried out with care (always dig as though a Service is there)</li> <li>Scanning must be carried out regularly as the excavation works take place whether it is hand digging or mechanical digging</li> </ul>	1	5
		20			5	



## HH CONSTRUCTION (GROUNDWORK CONTRACTORS) LIMITED

12 Methley Road, Castleford, WF10 1LX  
www.hhconstructionltd.com info@hhconstructionltd.com



<b>Vibration</b>  Operating Tools and Equipment which emits Vibration	Operator	5	4	<ul style="list-style-type: none"><li>A HAV assessment will be compiled for all Tools &amp; Equipment which produces Vibration levels above the EAV 2.5m/s<sup>2</sup></li><li>Any person suffering from any affects related to HAVS must report this to their supervisor. That person will then be given tasks which do not involve the use of Vibrating Tools / Equipment</li><li>All workers must read the relevant HAV assessment for the Tool Equipment they are to use.</li><li>They must ensure that the ELV 5.0m/s<sup>2</sup> is not exceeded within a 8hour period</li><li>The Site Supervisor will monitor exposure levels for each worker compile a daily record of exposure.</li><li>The Hands must be dry and warmed before using any vibrating Tools / Equipment, Gloves must be worn at all times in order to keep the Hands warm as this helps circulation.</li><li>Regular breaks must be taken in order to keep the Hands warm and to enable a good Blood circulation to be maintained.</li></ul>	2	4
		20			8	

<b>Noise</b>	Those within the work area	5	4	<ul style="list-style-type: none"><li>Ear defenders must be worn by all those within the work area who are affected by the noise</li><li>The wearer must ensure that the defenders are inspected before use and that any damaged items are not worn</li><li>The defenders must also be fitted correctly to ensure adequate hearing protection is achieved</li></ul>	2	4
		20			8	



# HH CONSTRUCTION (GROUNDWORK CONTRACTORS) LIMITED

12 Methley Road, Castleford, WF10 1LX  
www.hhconstructionltd.com info@hhconstructionltd.com



<b>Manual Handling</b> of various equipment on site.	Those carrying out the work	5	4	<ul style="list-style-type: none"> <li>Wherever possible mechanical equipment should be used to place the materials as close to the work area as possible to reduce the carrying distances</li> <li>Where materials are lifted manually then this should be number with more than one person in order to reduce the weight of the load carried by each person</li> <li>A good lifting technique should be adopted i.e. keep the back straight, bend the knees, take a firm grip and use the leg muscles to lift the load</li> <li>Gloves should be worn at all times to protect the hands from splinters, cuts, and abrasions</li> </ul>	1	4
		20			4	
Dust. Inhalation of hazardous airborne particles.	Operatives Others in immediate area	5	4	<ul style="list-style-type: none"> <li>Ensure operatives are face fit tested and wearing appropriate R.P.E if dust cannot be controlled by other means.</li> <li>Prevent dust from entering cabbed machines by closing windows/doors and using maintained HVAC system.</li> <li>Dampen down ground where practicable, ensuring dust cannot be kicked up in initial instance.</li> </ul>	2	4
		20			8	
Use of stihl saw	User/Those in the immediate area	4	4	<ul style="list-style-type: none"> <li>Ensure work piece held securely.</li> <li>Ensure saw is in good condition and the blade has been fitted correctly. (Check as part of the pre-use checks).</li> <li>Ensure user maintains a controlled action and keeps other hand protected and out of way where possible.</li> <li>Ensure that adequate dust suppression methods are employed.</li> <li>Ensure that an exclusion zone is appropriately set out.</li> <li>User to ensure that all in the immediate area are donning the correct PPE/RPE.</li> </ul>	1	4
		16			4	



## HH CONSTRUCTION (GROUNDWORK CONTRACTORS) LIMITED

12 Methley Road, Castleford, WF10 1LX  
www.hhconstructionltd.com info@hhconstructionltd.com



<b>Fuel Spillage</b>  Contamination of the ground, also the possibility of fuel entering drains or water courses.  Potential for fire/explosions from vapours within drainage systems.	All those on site.  The environment.	4	5	<ul style="list-style-type: none"><li>All fuel tanks must be banded.</li><li>Any fuel containers (drums, cans etc.) must be appropriate for fuel storage and must be kept in a properly banded area or in drip trays. The bund must be large enough to store the contents of the largest container present.</li><li>Any spillage must be contained immediately using the spill kits that will be present in all refuelling areas.</li><li>Any contaminated soil or spillage containment material (granules, sand, absorbents etc.) must be treated as hazardous waste and should be disposed of in accordance with the environmental procedures set out by the principal contractor and the local and national regulations.</li><li>In the event that any fuel enters the drainage system, or any water courses, then appropriate authorities (Environment Agency, local authority, water company etc.) must be informed immediately.</li><li>The principal contractor will designate refuelling area on site. This will be surrounded by the appropriate barriers.</li><li>A small banded area should be formed in front of the fuel tanks to contain any drips or spills from the nozzles of the tank hoses. If this is not possible, then a drip tray should be set up in front of the tank.</li></ul>	1	5
Working with wet concrete	User	3	4	<ul style="list-style-type: none"><li>There should be no exposed areas of skin</li><li>Nitrile gloves &amp; safety glasses must be worn at all times</li><li>If any clothing becomes contaminated it must be removed immediately</li><li>Any concrete coming into contact with the skin must be washed immediately</li></ul>	2	4





## HH CONSTRUCTION (GROUNDWORK CONTRACTORS) LIMITED

12 Methley Road, Castleford, WF10 1LX  
www.hhconstructionltd.com info@hhconstructionltd.com



### THIS RISK ASSESSMENT WAS PREPARED BY

Name	Position	Signature	Date
Alex Craig CertIOSH MIIRSM	H&S Manager		09/05/2025

### MANAGER / SUPERVISOR INCHARGE OF WORKS

I confirm that I have read and understand the requirements of this method statement and associated risk assessments (as highlighted on first page) and have communicated them to operatives under my control and to others who may be affected by its requirements.

*Note: it is important that you test the operatives' understanding and confirm that they have read and understood the method statement and risk assessments.*

Name	Position	Signature	Date

### OPERATIVES/WORKFORCE UNDERTAKING WORKS

I understand and will agree to adhere to the contents of this method statement and the associated risk assessments (as highlighted by the supervisor). I have attended a site induction/briefing that explained the general site rules and necessary site-specific arrangements.

*Note: if you have any doubt about information given or contained in this method statement, ask for clarification.*

Name	Position	Signature	Date