

17th October 2023

Dear Sir/Madam,

RE: Land at Sneckyeat Industrial Estate, Hensingham, Whitehaven (Site 1)

Description: Erection of two business/industrial buildings to provide five self-contained units (for B2, B8 and classes E(g)(i), E(g)(ii) and E(g)(iii)), car parking, access and associated works.

Please find enclosed the requested information from united utilities regarding the drainage outputs on the subject site.

Please see the sketch provided showing where the existing foul and surface water routes discharge into for Site 1. To summarise please see the information provided by the appointed drainage surveyor:

1. The existing private foul water network, from within Sneckyeat Industrial Estate, discharges into the UU public sewer manhole '9210' that is located in the eastern pavement of Homewood Road.
2. The existing private surface water network, from within Sneckyeat Industrial Estate, continues to flow in a south easterly direction in the form of a 600mm diameter pipe. This drain has been surveyed, by camera, for a distance of 213m from the last visible manhole with two buried chambers confirmed on the line. The drain continues into the agricultural land, beyond the Hospital Car Park, and presumably continues on the same line prior to discharging into a culvert/watercourse.

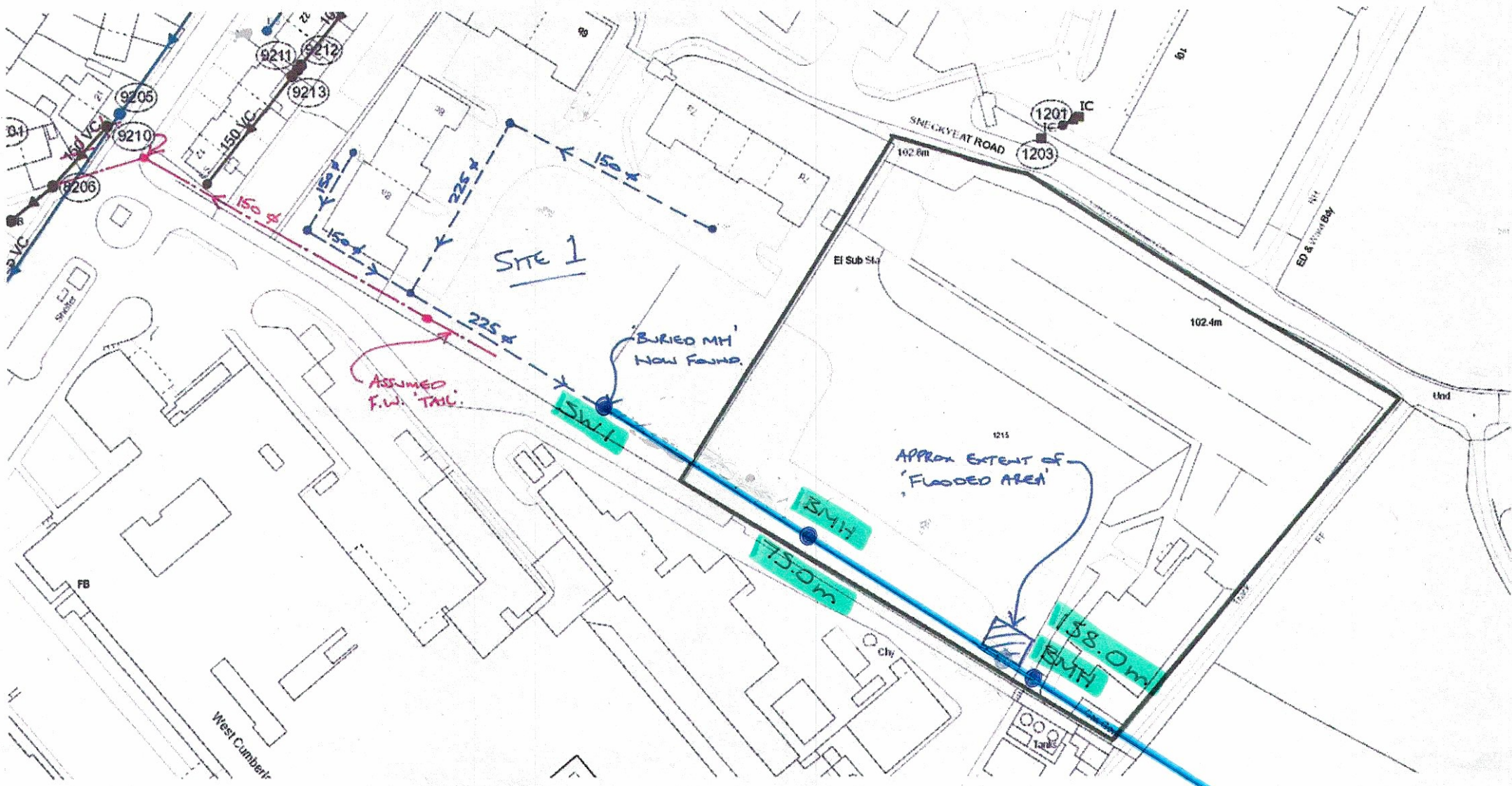
I trust that the above is sufficient for your needs at the present time but please do not hesitate to contact me should you require any further information.

Yours sincerely,

Nathan Houghton
Assistant Surveyor

Northern Trust Company Ltd

web: www.northerntrust.co.uk



- LINES SURVEYED
- MH REFS / INFO

FIELD AREA → 215.0m
 I.S. GSA
 OCT 23

SITE 1

'BURIED MH'
 NOW FOUND.

APPROX EXTENT OF
 'FLOODED AREA'

ASSUMED
 F.W. TAIL.

SNECKYEAT ROAD

West Cumber

IC
 1201
 1203

EI Sub Sta

102.4m

1215

138.0m
 BMH

750m
 BMH

5W1

9205
 9210
 9206
 9211
 9212
 9213
 150 VC
 150 VC
 150 VC

102.6m

ED & FUTURE BAY

Und

100

chw

FB

11

34

Station

11