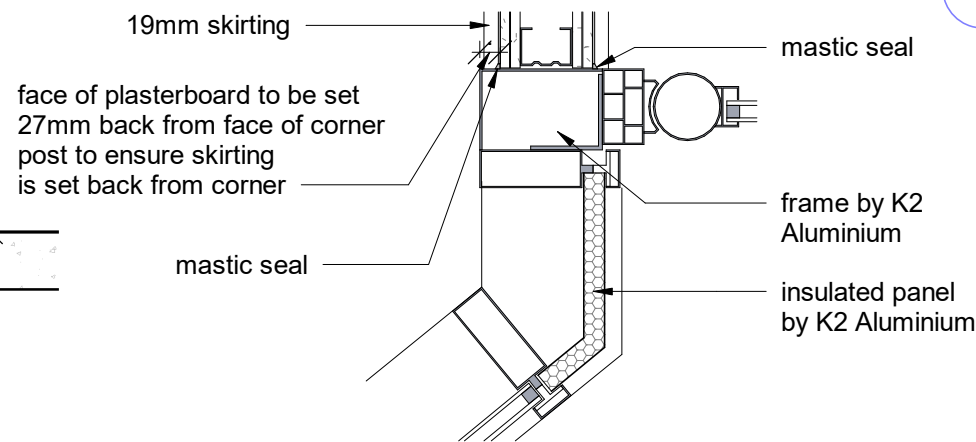
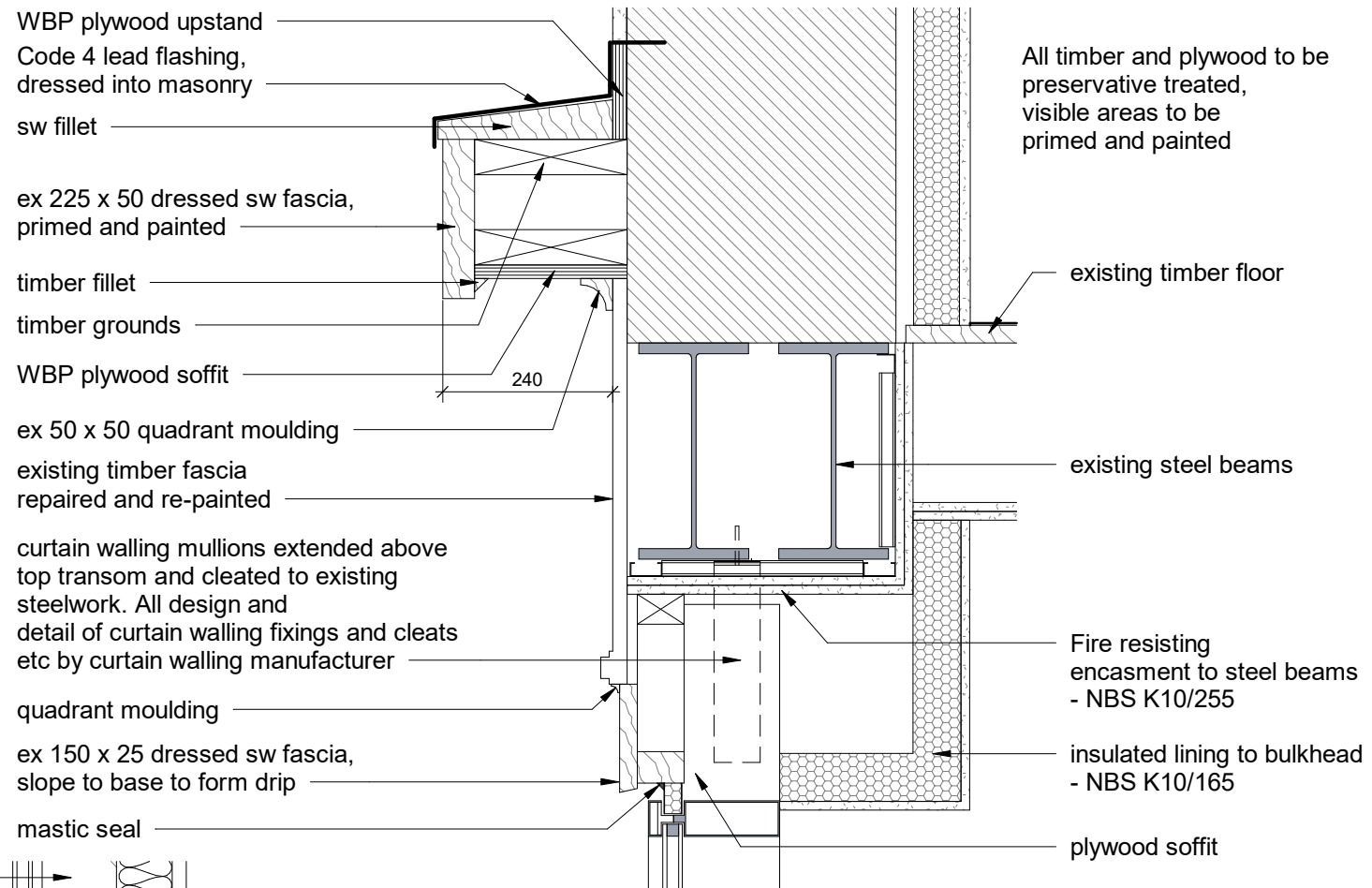


31322-01 Typical Section
SCALE: 1 : 20

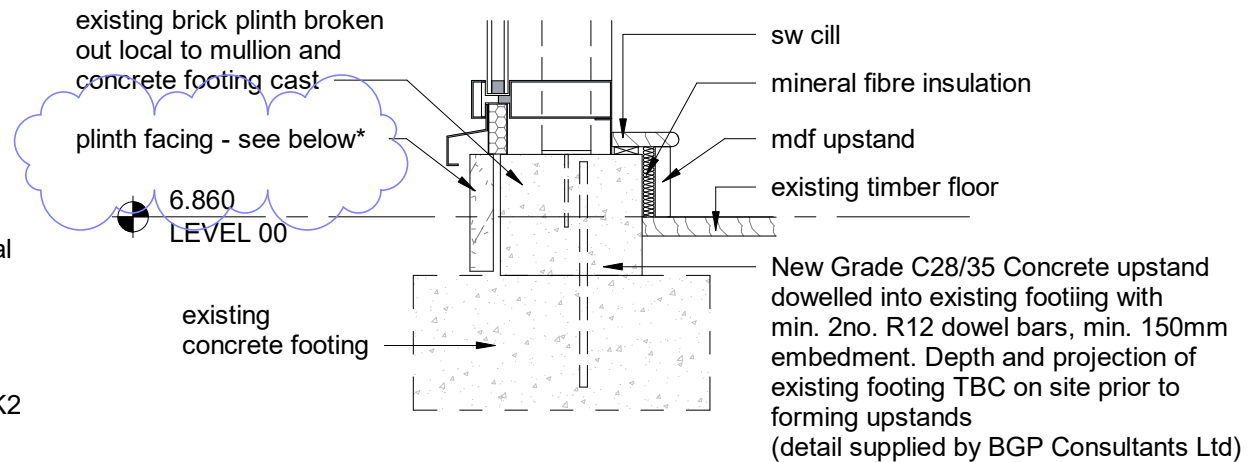
31322-04 Plan Detail to Mullion Fixing
SCALE: 1 : 10



31322-05 Junction between door frame and wall
SCALE: 1 : 10



31322-02 Typical Head Detail
SCALE: 1 : 10
(REFER TO K2 ALUMINIUM SYSTEMS LTD DRAWINGS FOR CURTAIN WALLING DETAILS)



31322-03 Typical Cill Detail
SCALE: 1 : 10
(REFER TO K2 ALUMINIUM SYSTEMS LTD DRAWINGS FOR CURTAIN WALLING DETAILS)

* Plinth facing to south (Duke Street) elevation to be replaced with ceramic tiles; facing to west (Tangier Street) to be retained and repaired with sections salvaged from south elevation.

All timber and plywood to be preservative treated, visible areas to be primed and painted

DATE	REVISION	REV	DRW	CHK
05/03/25	CONSTRUCTION ISSUE	C01	ML	SM
15/04/25	Detail 31322-05 added	C02	ml	sm
01/07/25	Plinth facing revised	C03	sm	sm
<p>This drawing has been prepared solely for the use of BEC and there are no representations of any kind made by NORR Consultants Limited to any party with whom NORR Consultants Limited has not entered into a contract</p> <p>This drawing must not be used, reproduced or revised without written permission.</p> <p>This drawing shall not be used for construction purposes until the "CONSTRUCTION" status appears under the Sheet Status.</p> <p>Constructors must only work to figured dimensions which are to be checked on site. Do not scale from hard copy drawings</p>				
<div><div>NORR</div><div>NORR Consultants Ltd.</div><div>An Ingenium International Company</div><div>SET OFFICE INFORMATION</div><div>www.norr.com</div></div>				
Drawn	Date			
sm	03.03.25			
Checked	Date			
ml	03.03.25			
Client				
BEC				
Project Name				
Whitehaven Digital and Gaming Hub - LEVELS				
Drawing Title				
Curtain Walling Details				
Scale				
As indicated@ A3				
Sheet Status				
C - CONSTRUCTION				
Project No.				
ED3024-0055-00				
Drawing No.				Rev.
DGHW-NOR-XX00-DR-A-31322				C03