

## Appendix 1

### Front of the Property

All wooden mock sash windows to be repainted in a dark grey colour.

Black cast iron guttering and downpipes.

Main sign will be repainted in dark greys from the grey pallet. Lettering will be as existing but painted in antique gold to complement the brass door furniture.

Stone to be steam cleaned and pointed, in the same style.

Plastic banner and chalk boards and sky dishes to be removed

Wooden lates to re replaced with UPVC casement windows with astragal bar.



## Front of the Property



### Picture 1

Blocked up basement windows to be replaced, UPVC casement external astragal bar cross to tie in with Victorian sash look. Colour from the grey pallet identical to the mock sash. All windows will be the same colour



### Picture 2:

Door to be replaced with wooden part glazed door. Victorian statement design. Window above the door to match glazing in door. Brass furniture. Door colour to be confirmed/agreed

Signage will remain the same but will be painted as detailed on Page 1.

### Front of the property



#### Picture 3.

Velux Conservation sky light to replace existing, shown with red circle. Same size

Sky light window to be reinstated shown with green square. Re roofed using same slate.

### Rear and side of the property.



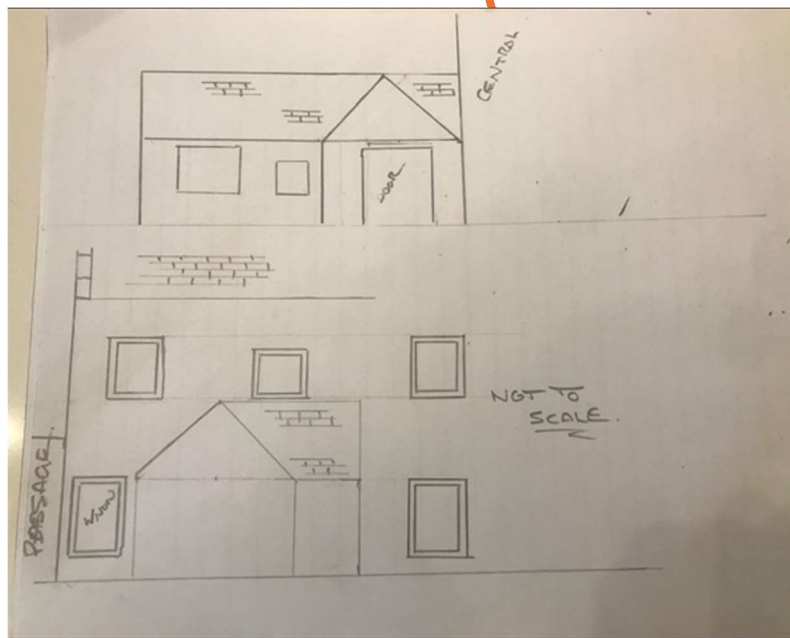
Windows will be replaced with UPVC casement windows with an external astragal cross to tie in with Victorian sliding sash. All colours will match, colour from grey pallet. As detailed in **picture 1**

### Rear porch/ passageway





Current rear porch, to be demolished and replaced as detailed in the sketch.  
Sandstone faced, with an slate roof to match existing.



**Picture 5.**  
New rear entrance door. UPVC 4 pane  
Victorian style with 2 glazed panels and 2  
side panels with half glazing.