



DAWSON (A20)

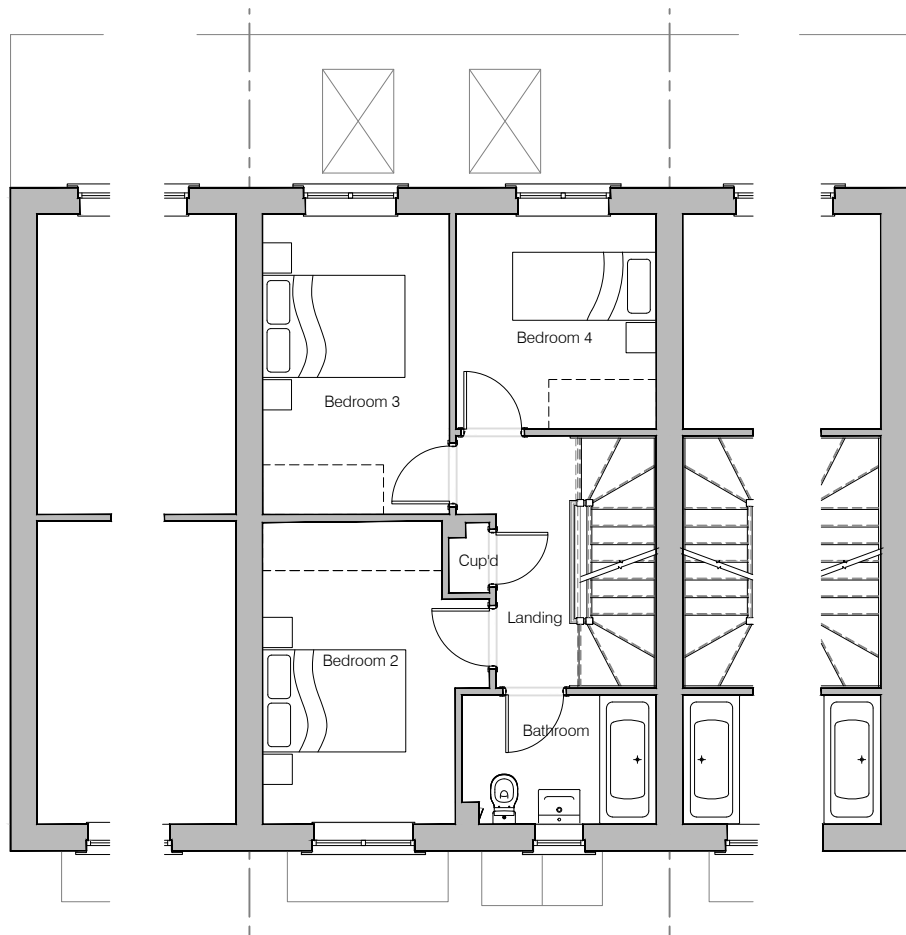
Planning Drawings - Contemporary

GF: 54.31 m2 (584.59 ft2)
FF: 42.50 m2 (457.47 ft2)
SF: 34.47 m2 (371.03 ft2)
TOTAL: 131 m2 (1413 ft2)

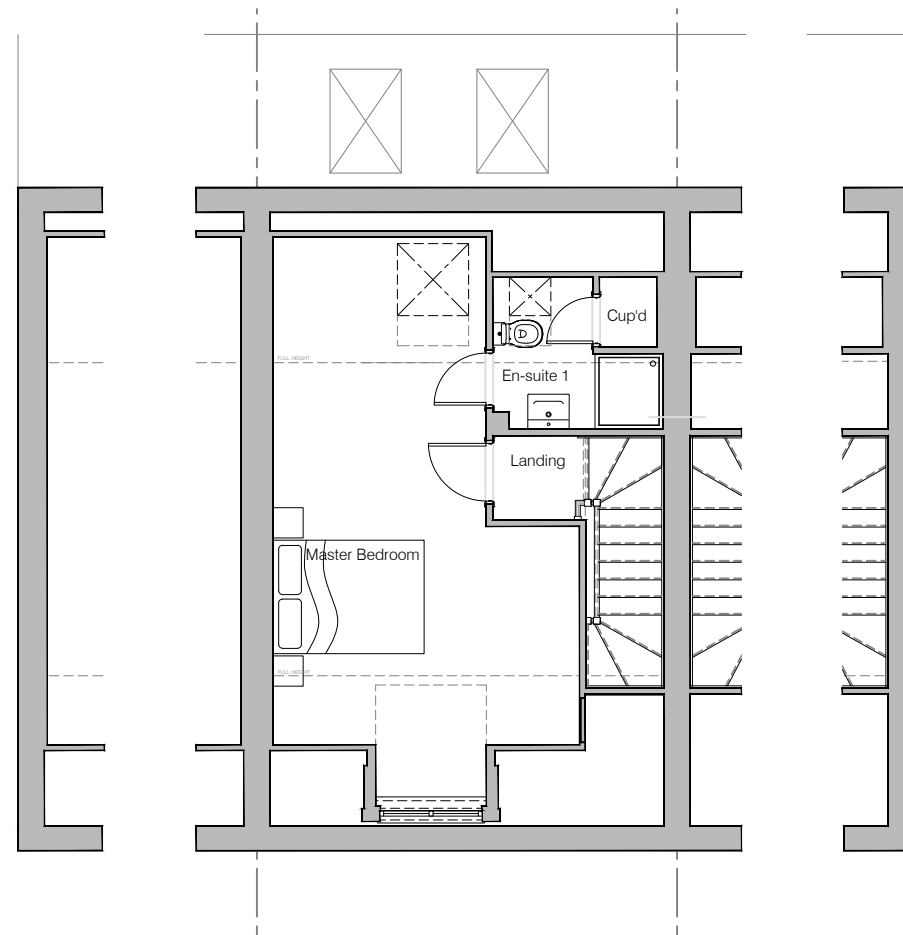
© **Story Homes.**

Story House, Lords Way, Kingmoor Business Park,
Carlisle, Cumbria. CA6 4SL.

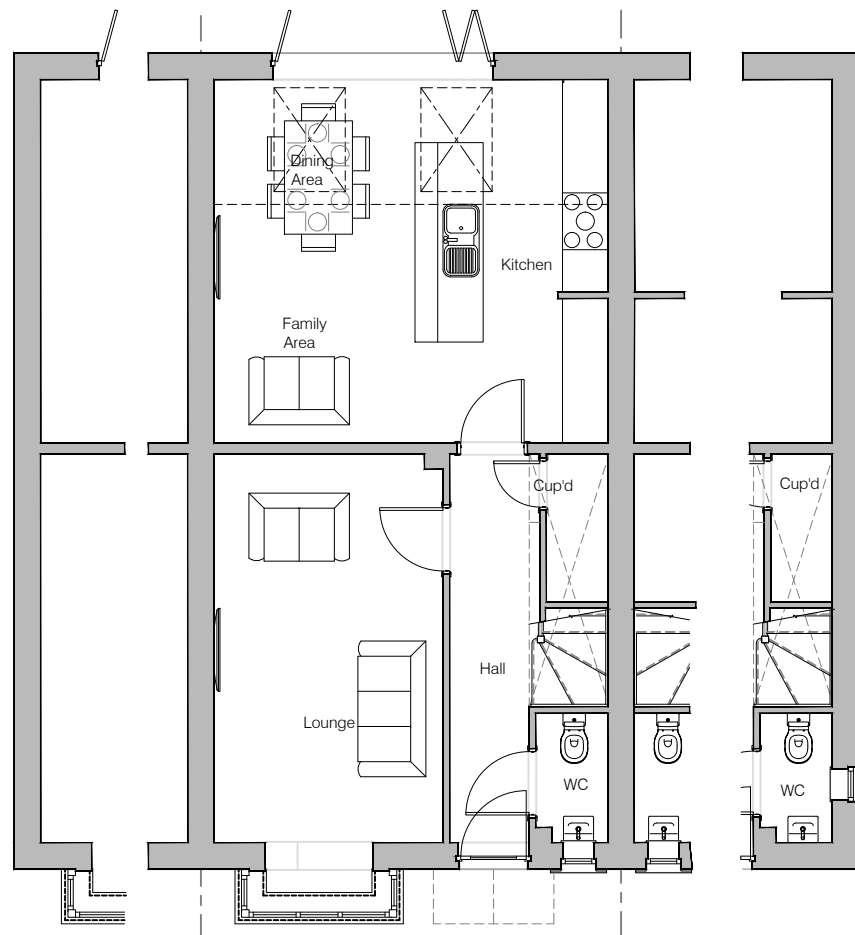
Tel 01228 404550
Fax 01228 404551



First Floor Layout



Second Floor Layout



Ground Floor Layout



HOUSE TYPE
DAWSON (A20)

DRAWING
Planning Layout 1

DRAWN BY AA DATE 16/09/22

CHECKED BY JB, AH SCALE 1:100@A3

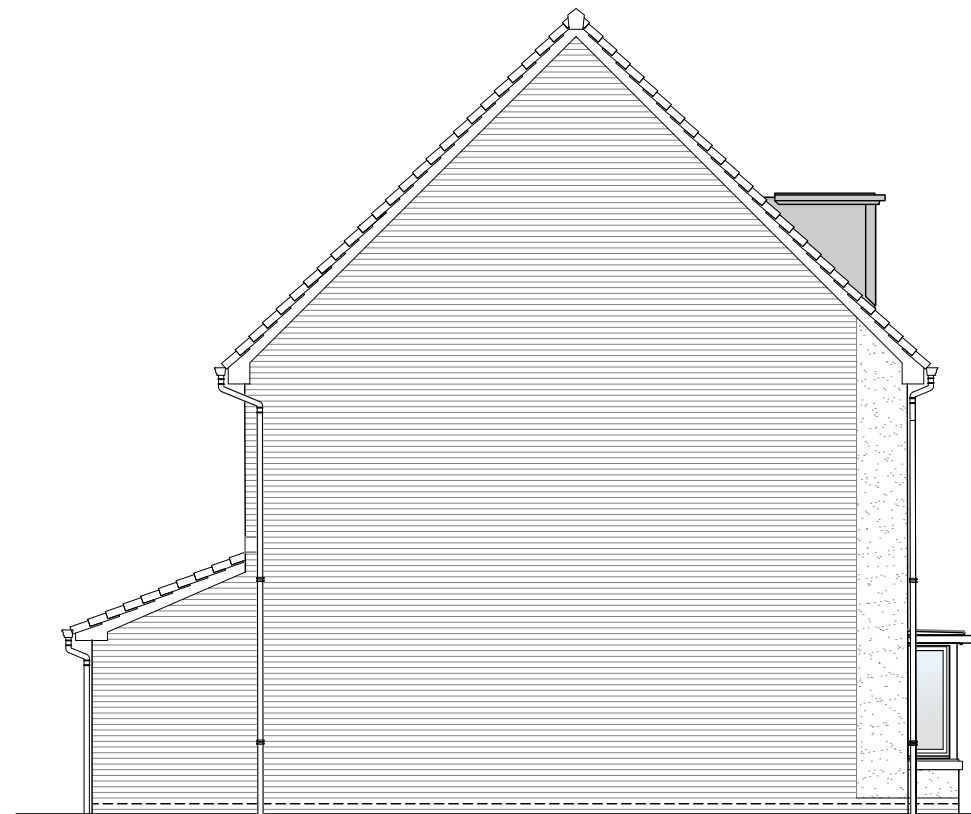
DWG PACK A/20.6 DRAWING NUMBER DWN-PLP1 REVISION A

Revisions Notes Date

A Second Floor Bedroom rooflight repositioned 14/07/23



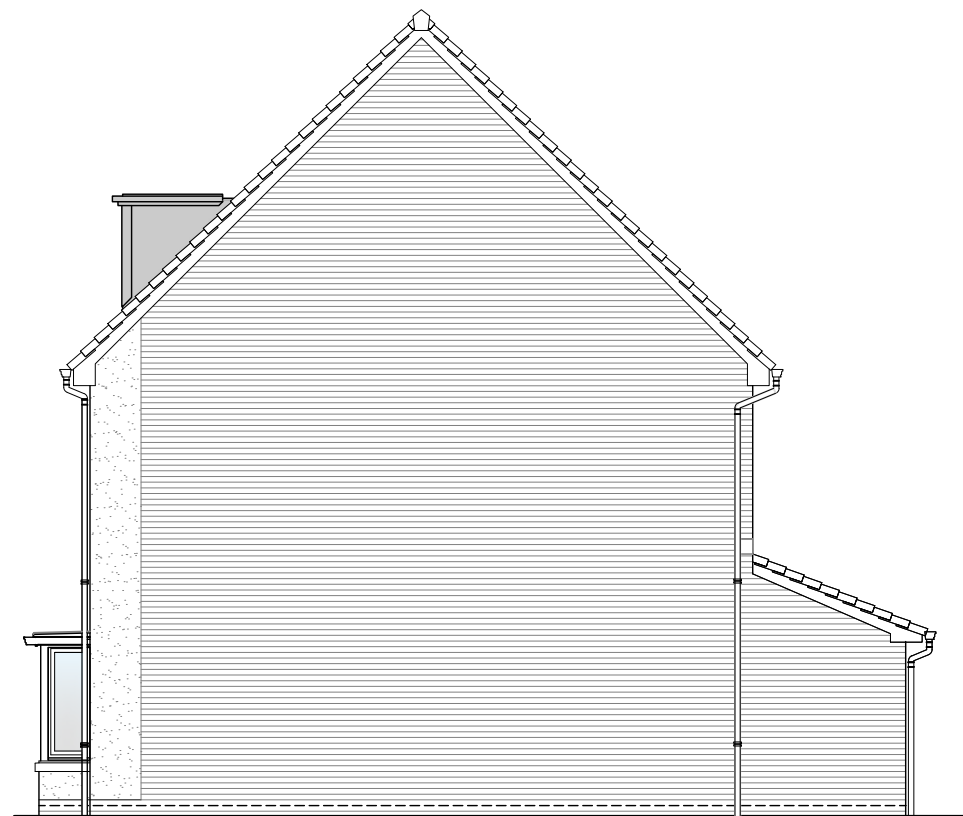
Front Elevation



Left Elevation



Rear Elevation



Right Elevation

PV Solar Panels
Elevations indicate typical arrangement only - number of panels required and location / array to be plot specific. PV panels to be in-roof type.



HOUSE TYPE

DAWSON (A20)

DRAWING

Planning Elevation C

DRAWN BY	AA	DATE	16/09/22
CHECKED BY	JB_AH	SCALE	1:100@A3
DWG PACK	DRAWING NUMBER	REVISION	
A/20.6	DWN-PLE-C	-	

Revisions	Notes	Date
-	-	-

© **Story Homes.**

Story House, Lords Way, Kingmoor Business Park,
Carlisle, Cumbria. CA6 4SL

Tel 01228 404550

Fax 01228 404551