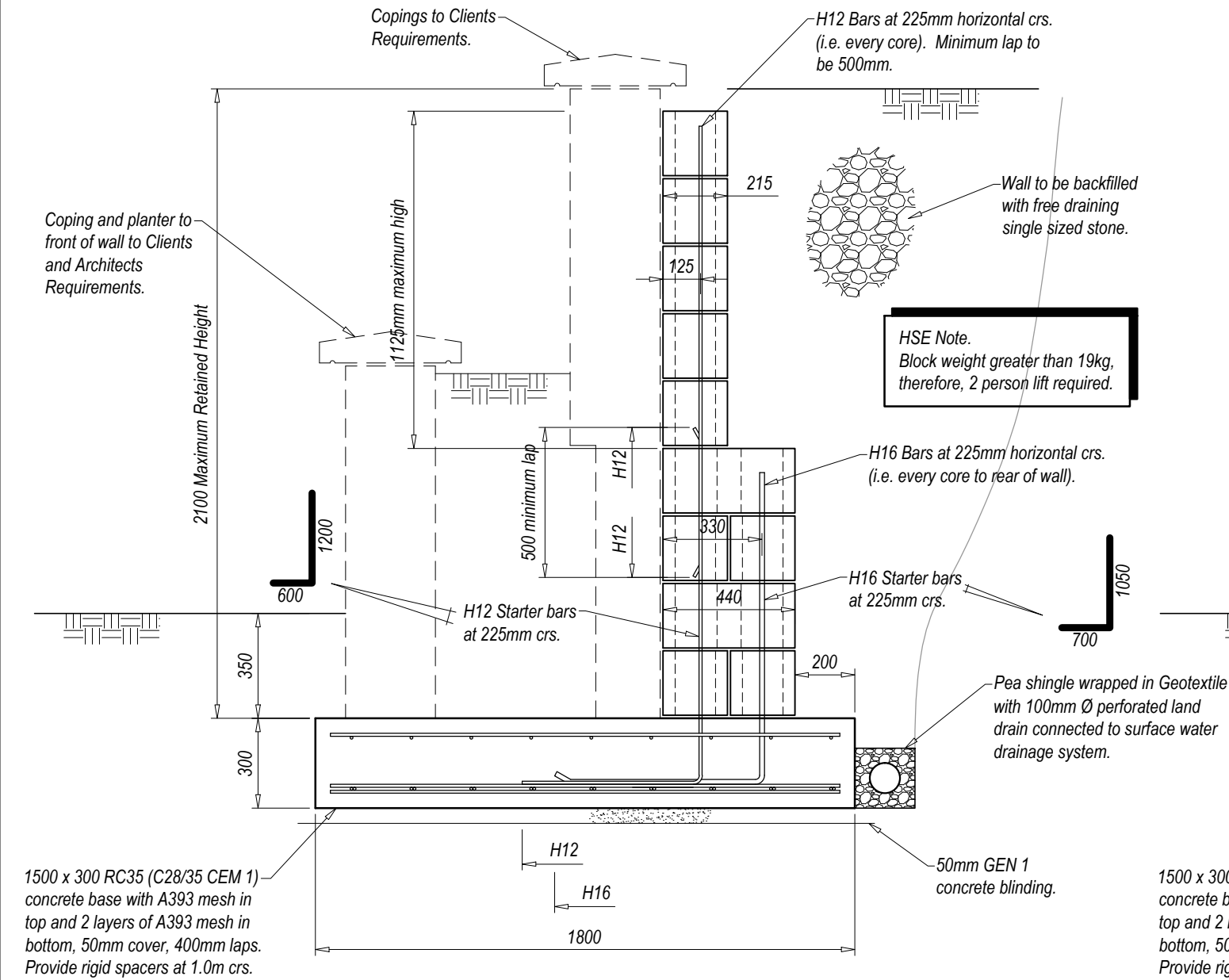
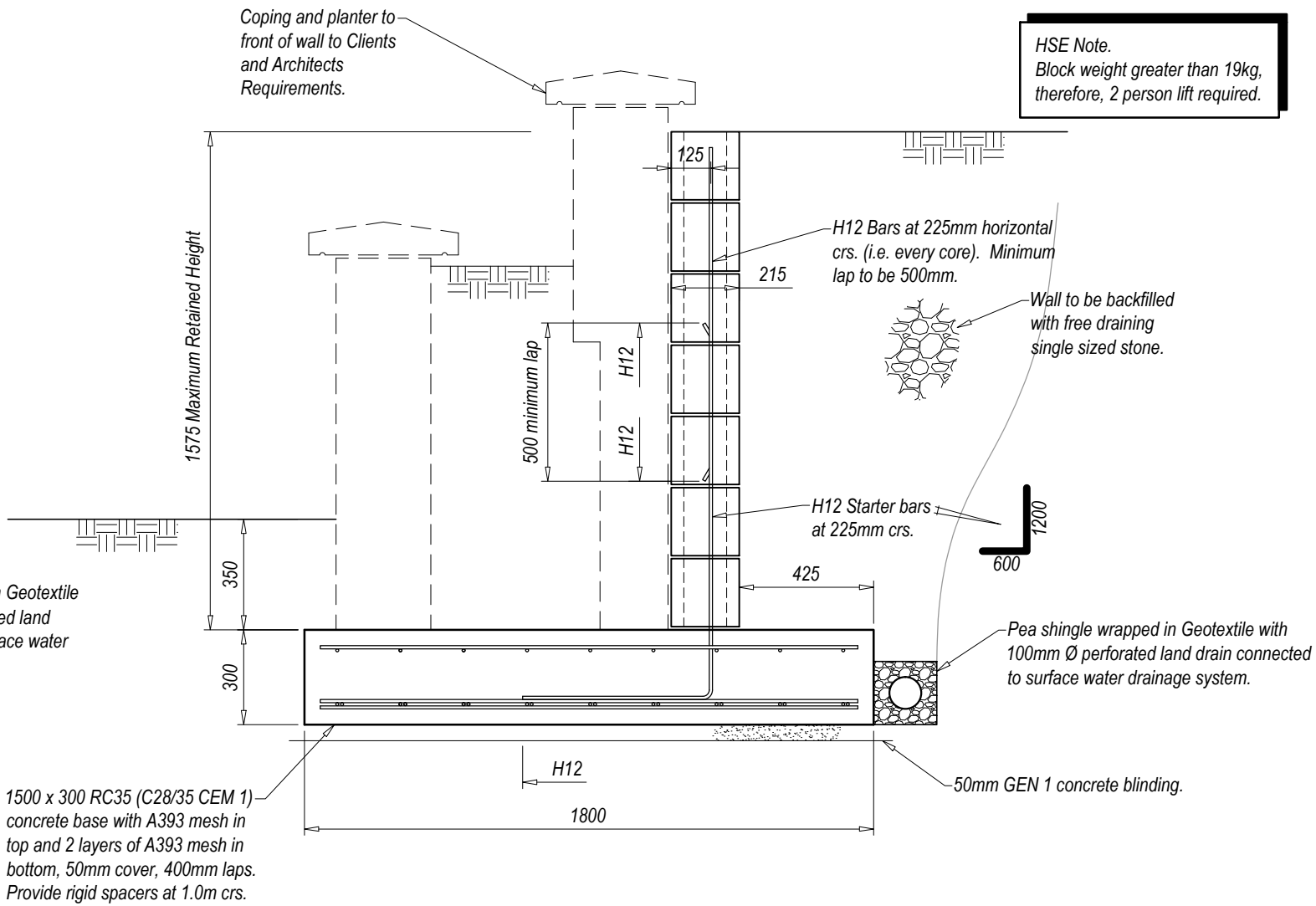


Scale	1:20 @ A3	Revisions					Bingham Yates Limited Consulting Engineers		D1588 / Sk.08	Revisions A
Drawn	rjm	Revisions	Made by	Date	Checked					
		A	rjm	12:05:21		Wall layout amended to suit latest Architects details.	Project		Moorleys Farmhouse, Howman.	This detail sheet to be read in conjunction with drg no.
Date	25:02:21						Drawing Title		Garden Retaining Walls.	
Checked										

- Drawing Notes.
1. Cores to hollow blocks to be filled with RC35 (C28/35 CEM 1) concrete to Table 5 of BS 8500 Part 2, 10mm maximum aggregate size.
 2. Movement joints required at maximum 8100mm crs (i.e. every 18 blocks).
 3. Footing to be founded on natural ground capable of supporting at least 100kN/m².
 4. GEN 1 concrete to BS 8500 to be used to upfill areas of soft ground.
 5. Blocks to be medium density with a minimum compressive strength of 7.3 N/mm².



Hollow Block Garden Retaining Wall Detail
for 2100mm Maximum Retained Height. (1:20)



Hollow Block Garden Retaining Wall Detail
for 1575mm Maximum Retained Height. (1:20)