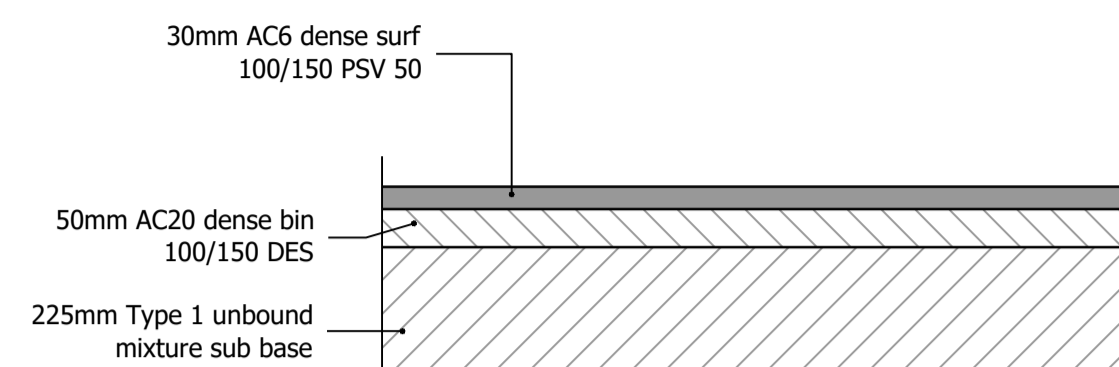
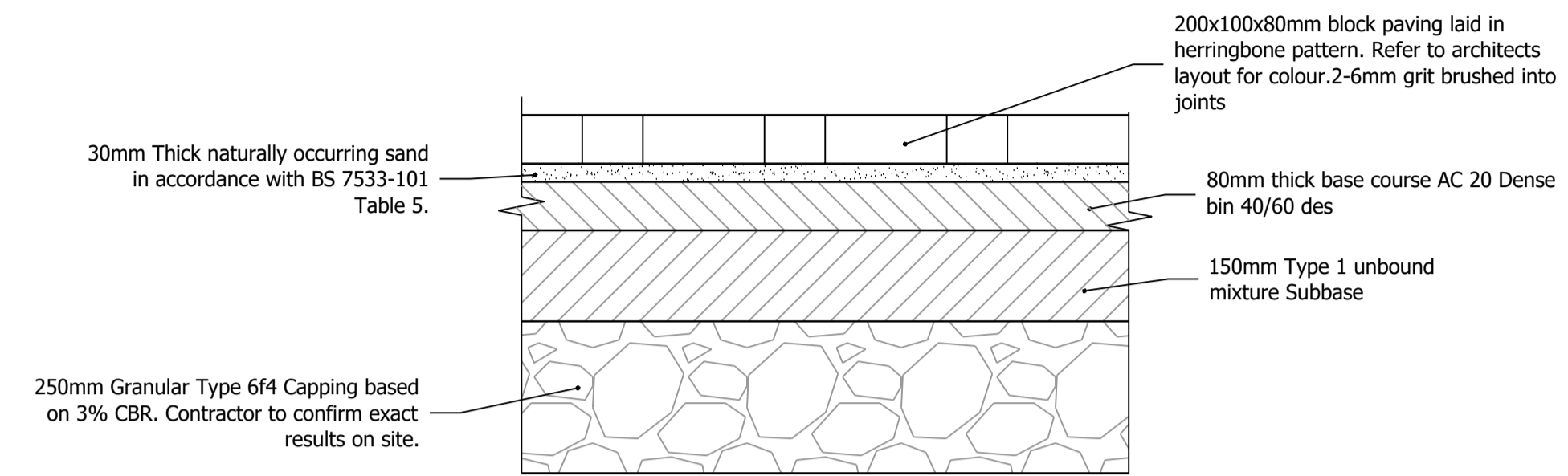


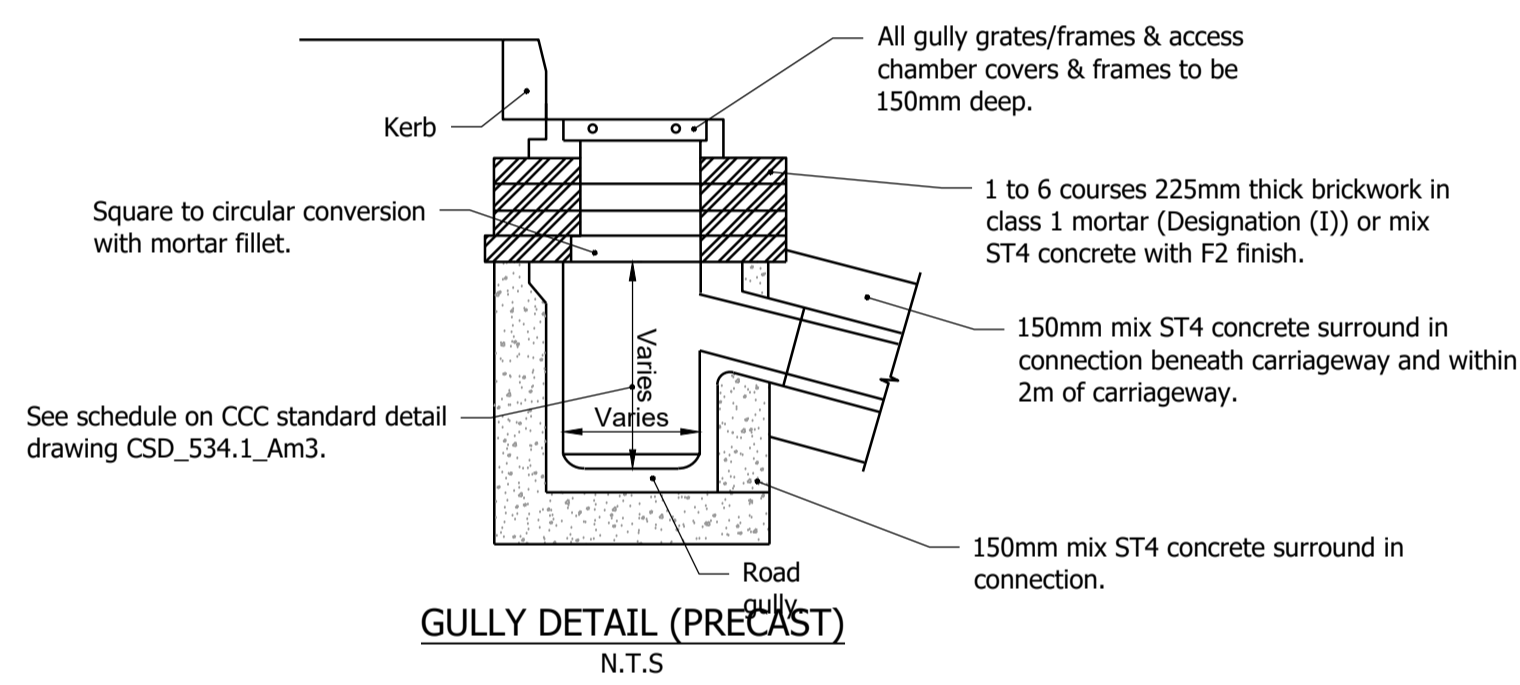
F1
FULL FOOTWAY CONSTRUCTION
 Scale 1:10



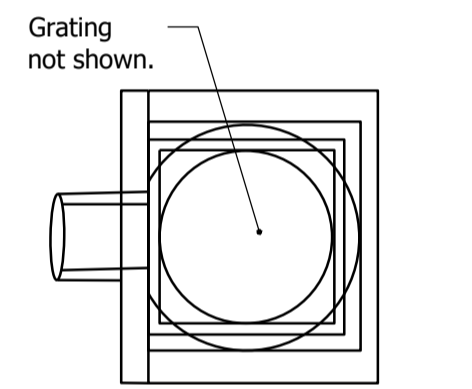
F2
FULL FOOTWAY CONSTRUCTION - VEHICLE ACCESS
 Scale 1:10



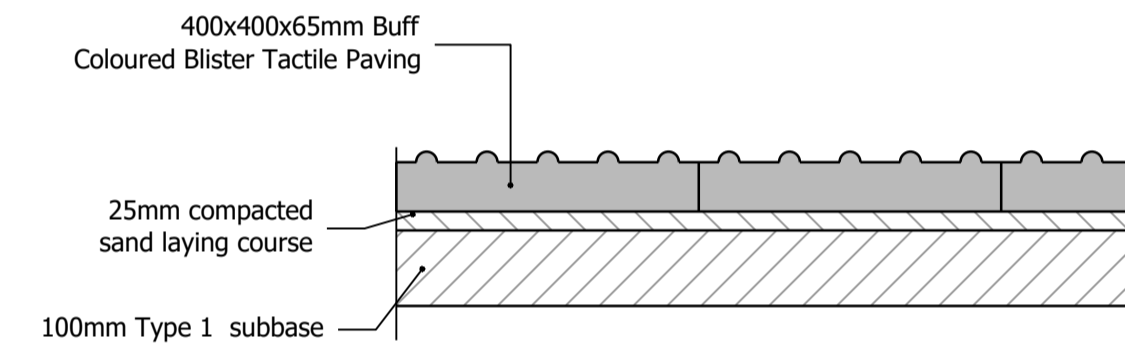
F3
BLOCK PAVING - VEHICULAR LOADING
 Scale 1:10



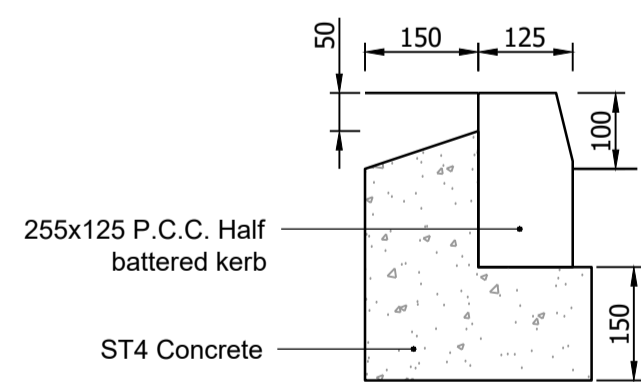
GULLY DETAIL (PRECAST)
 N.T.S



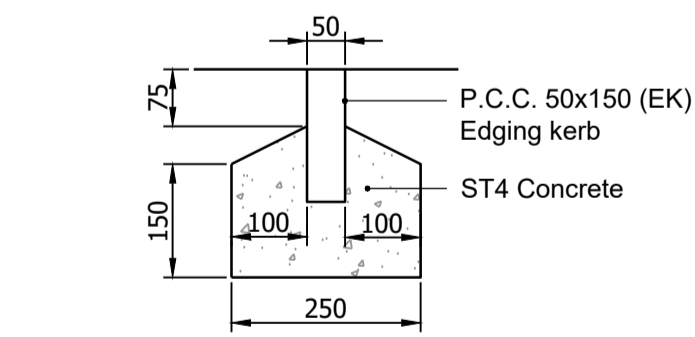
GULLY DETAIL PLAN VIEW
 N.T.S



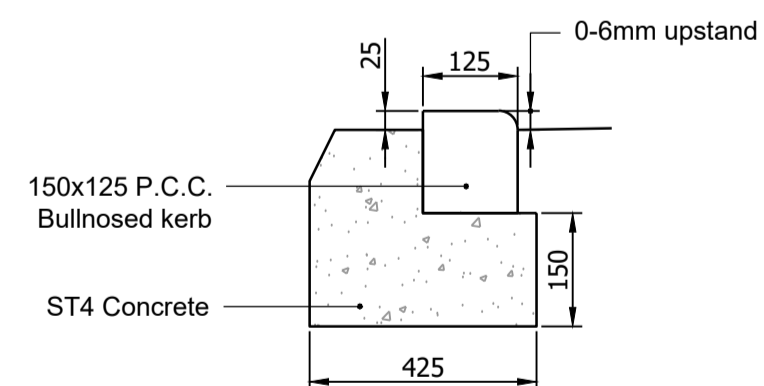
TACTILE PAVING CONSTRUCTION
 Scale 1:10



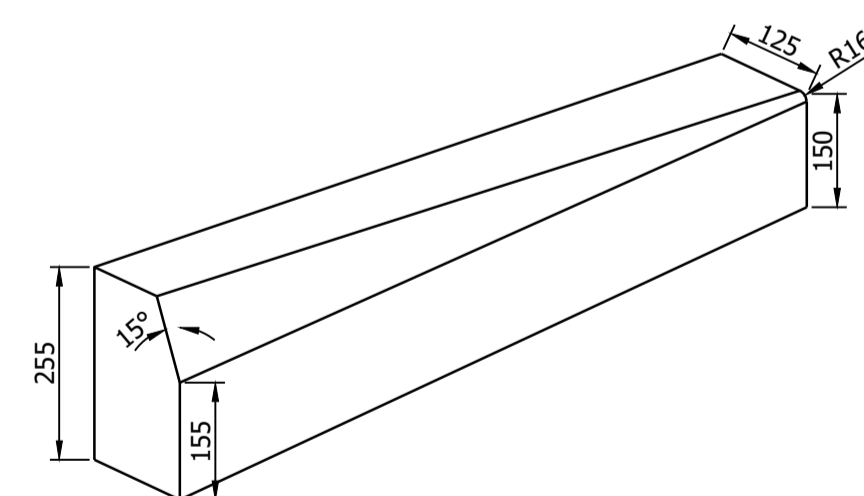
TYPICAL HB2 KERB DETAIL
 Scale 1:10



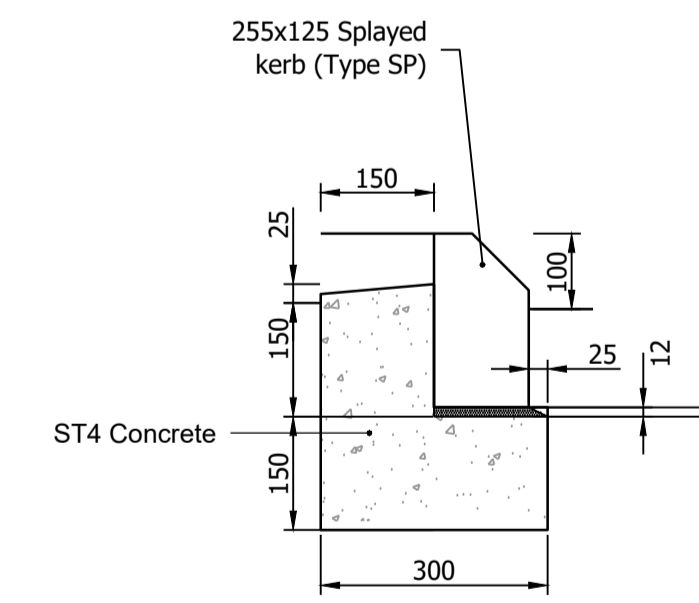
TYPICAL EDGING KERB DETAIL (EK)
 Scale 1:10



TYPICAL BN KERB DETAIL
 Scale 1:10



DROPPER KERB TYPE 1 DETAIL
 Scale 1:10



TYPICAL K2 KERB DETAIL (SPLAYED KERB)
 Scale 1:10

NOTES

1. This drawing is to be read in conjunction with all relevant architects, engineers and specialists drawings and specifications.
2. All works shall be in accordance with the Highway Authority's approved documents and satisfaction. Any reference to the specification shall mean the general specification for roadworks.

PRELIMINARY ISSUE

Rev.	Description	Date	Dr.	CR.	App.
P02	MS AND RSA COMMENTS INCORPORATED	28.07.23	LJB	MB	LB
P01	PRELIMINARY FIRST ISSUE	16.06.23	LJB	MB	LB

Issuing Office
Tetra Tech Manchester
 2nd Floor,
 11 York Street,
 Manchester, M2 2AW
 Tel: +44 (0)161 872 3223
 www.tetratech.com

Client
CUMBERLAND COUNCIL

Project Name
CLEATOR MOOR INNOVATION QUARTER (CMIQ) HUB

Sheet Title
STAGE 4 STANDARD DETAILS SHEET 2

TTE Project Number	Drawn By	Date	Checked By	Date	Approved By	Date	Scale @ A1	Suitability
784-B034942	LJB	May '23	MB	May '23	LB	May '23	1:10mm	S0
Client Project Number	Originator	Volume/System Level/Location	Type/Code	Role	Number	Revision		
CMIQ	- TTE	- HUB	- ZZ	- DR	- H	- 2601	P02	