


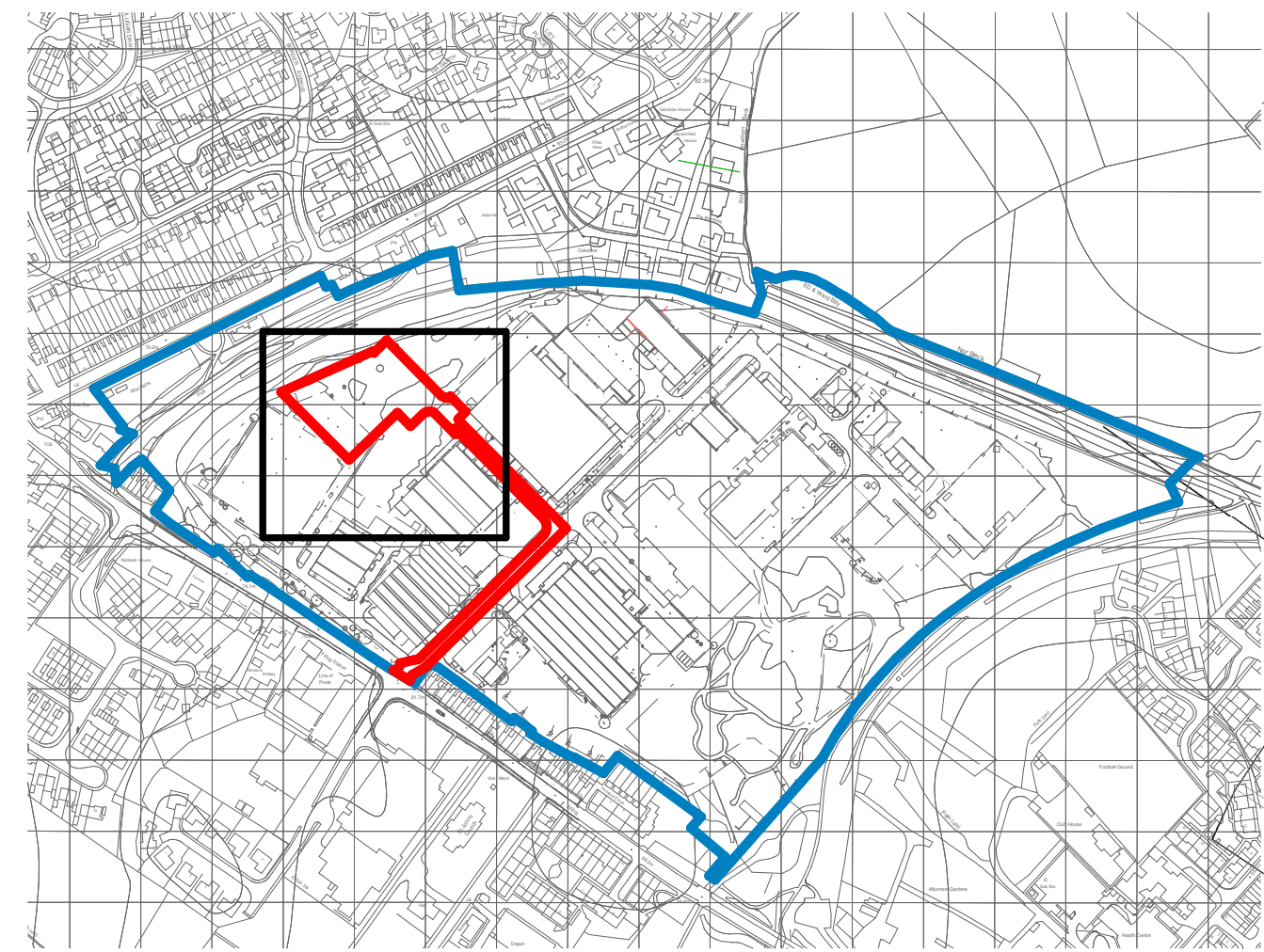
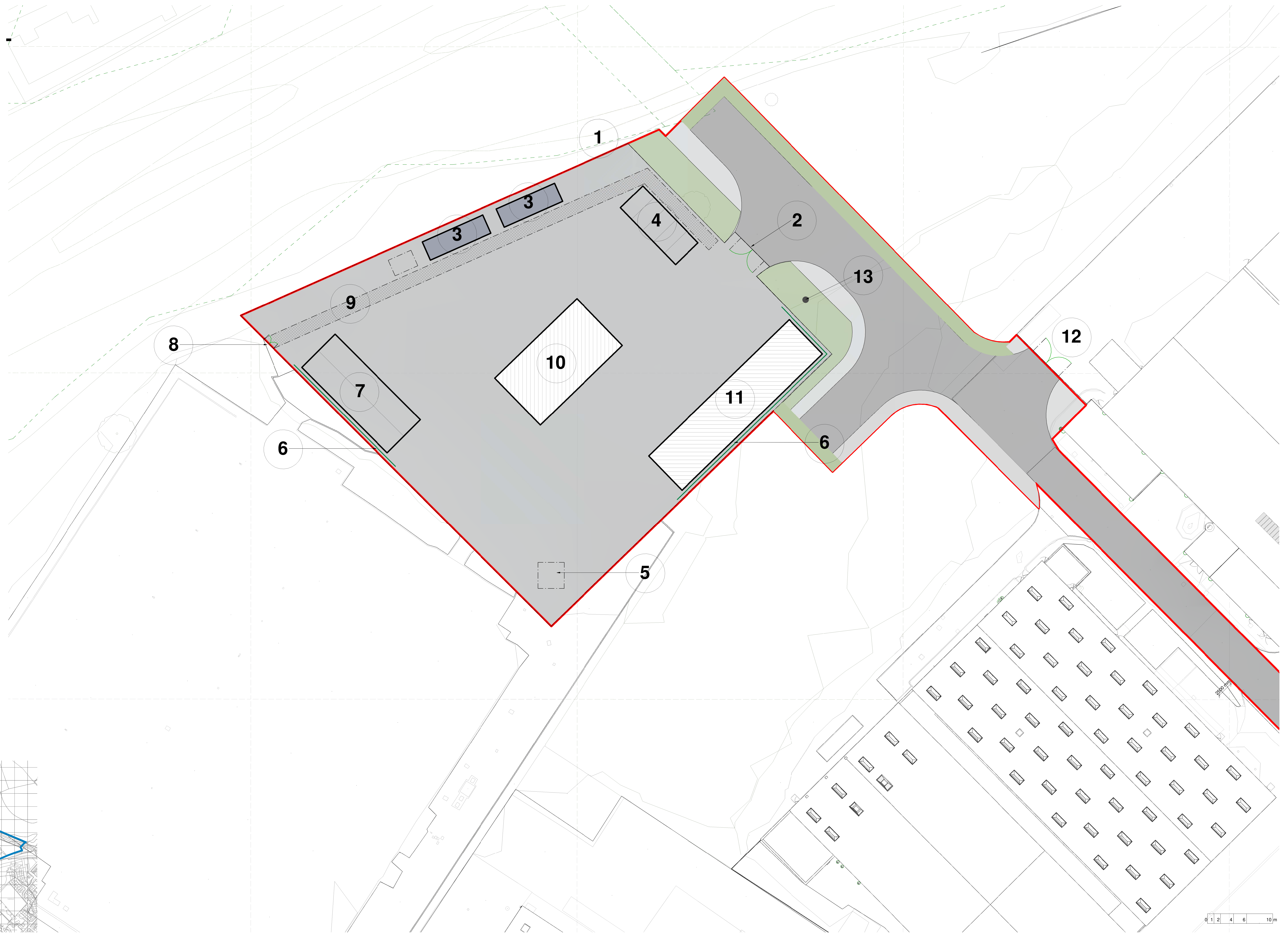


- APPLICATION BOUNDARY
 ADDITIONAL LAND UNDER COUNCIL OWNERSHIP
 GRASS
 HARDSTANDING / FOOTPATH
 ROAD

- 1. Perimeter Fencing -**
2.4m high Lochrin Bain
Combi Palisade Fencing with
3mm 'D' section Single
Pointed Tops Galvanised
Fencing
- 2. Main Gates -**
2.4m high, Double Leaf
Vehicle Gate
- 3. New Portakabins -**
(32ftx10ft) to be provided by
BOC
- 4. Car Parking -**
Showing 5 car parking
spaces
- 5. Gas Cylinder Location**
- 6. Rubberised Kerb**
- 7. Lorry Parking -**
Showing 2 lorry parking
spaces
- 8. Emergency Access Gate**
- 9. Pedestrian Walkway**
- 10. Loading area**
- 11. Cylinder sorting and
Storage area**
- 12. Relocated Existing Gate -**
fence to be re-positioned to
sit next to the building.
- 13. Totem Sign Location**

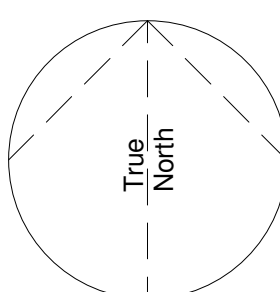


Constructors must only work to figured dimensions which are to be checked on site. Do not scale from hard copy drawings.

[illegible]

Keyplan

| |
|-------------|
| North Arrow |
|-------------|



Consultants

THIS DRAWING IS PREPARED TO FULLY REPRESENT THE REQUIRED AND STRUCTURAL, SURVEY, ENGINEERING, DESIGN, CONFIRMATION OF BOUNDARIES, EASEMENTS AND COVENANTS, FLOOR RISE ASSESSMENT, SERVICES AND UTILITIES, TOPOGRAPHICAL SURVEY, ECOLOGY ASSESSMENT, CONTAMINATION ASSESSMENT, PLANNING, BULGING CONTROL AND HIGHWAYS APPROVAL. THIS NOTE ADDITIONAL REQUIREMENTS ARE NOT EXHAUSTIVE.

PLEASE NOTE SITE INFORMATION WAS PROVIDED BY CORPUSCULI SOUTH COAST AND ORDNANCE SURVEY. NORRI IN NO WAY ACCEPTS LIABILITY FOR THE ACCURACY OF THIS INFORMATION OR THAT SUPPLIED BY THIRD PARTIES.

THIS DRAWING IS SUBJECT TO FULL CONSULTATION WITH STATUTORY BODIES AND ASSOCIATED CONSENTS.

THERE IS DESIGN DEVELOPMENT YET TO TAKE PLACE. A FULL MAP HIGHLIGHTED AREAS, LEFT NUMBERS AND DRAWINGS, AND THEREFORE THESE DRAWINGS SHOULD BE TREATED AS APPROXIMATE. THEREFORE ANY DECISION TO BE MADE ON THE BASIS OF THESE PRESENTATIONS, WHETHER AS TO PROJECT VIABILITY, PRELIMINARY, LEGAL ARRANGEMENTS, INTERNAL, PLANNING/EQUIPMENT ARRANGEMENTS OR THE LIKE SHOULD INCLUDE THE FOLLOWING: THE POSSIBLE INCREASE OR DECREASE IN RISK IN THE DESIGN DEVELOPMENT AND BUILDING PROCESSES. ALL AREAS ARE THEREFORE GIVEN AN APPROXIMATE RISK AND SUBJECT TO DESIGN DEVELOPMENT.

ANY DISCREPANCIES ON THESE DRAWINGS ARE TO BE HIGHLIGHTED TO THE ARCHITECT IMMEDIATELY. DO NOT SCALE FROM THESE DRAWINGS. IF IN DOUBT PLEASE REQUEST CLARIFICATION.

SET OFFICE INFORMATION
www.norr.com

Scale As indicated @ A0

| | |
|----------------------------|-----|
| Drawing No. | Rev |
| CMIQ-NOR-BOC-00-DR-A-90002 | P07 |