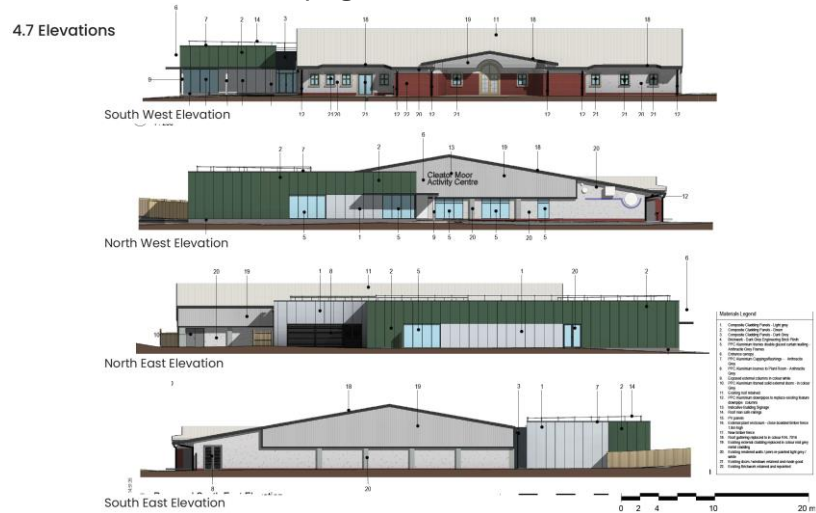


APPLICATION No: 4/24/2089/0F1

Discharge Condition 8 - No superstructure shall be erected until samples and details of the materials to be used in the construction of the external surfaces of the development hereby approved have been submitted to and approved in writing by the Local Planning Authority.

Cladding colours are referenced on page 30 of the DAS.



The proposed wall cladding product is Kingspan KS1000MR (micro-rib) panel – vertically fixed - Core thickness – 80mm Quadcore [QuadCore AWP LEC Wall Panel | Kingspan GB](#)

Colour brochure attached for ref

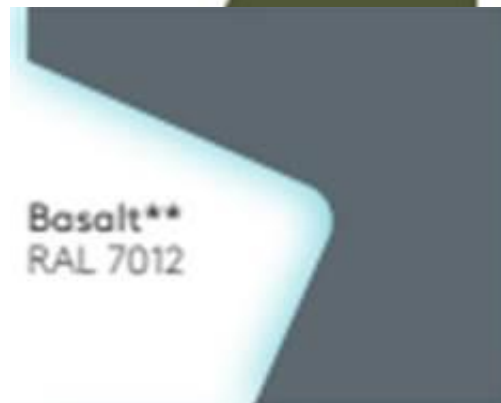
1. Light Grey



2. Green



3. Dark Grey



Physical Samples of the cladding can be posted to the LPA upon request.