



SD100 - External Plot Finishes - Issue (02)

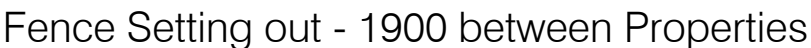
Standard Construction Details

© **Story Homes.**

Story House, Lords Way, Kingmoor Business Park,
Carlisle, Cumbria. CA6 4SL.

Tel 01228 404550

Fax 01228 404551



NOTES

General
All timbers shall be pressure impregnated with preservatives as specified. Finish to be mid brown. All cut ends to be preservative treated prior to fixing.
Timber quality shall be as noted in BS 1722. pt 5 Appendix N.

- ① 100mm compacted gravel bed
- 450 x 450mm ST2 grade site mixed concrete foundation to post in accordance with NHBC Standards Chapter 3.1, or ready mix grade GEN 1 concrete
- ② 2400mm long 95 x 95mm s/w post @ 1800mm max centres with weathered top
- ③ 100 x 38mm s/w rails, butt jointed and fixed at posts with 2 minimum 4.50 gauge 100mm galvanised round wire nails.
- ④ 1800 x 95 x 19mm s/w boarding fixed at 120mm centres, with 2 minimum 2.65 gauge 45mm galvanised nails per fixing position
- ⑤ 95 x 47 s/w post fixed to wall with 7.5 x 120mm long countersunk concrete screws to centres shown on plan
- ⑥ Galvanised ring handled gate latch 6" fixed through centre rail with 25mm screws.
- ⑦ 150mm galvanised m/steel straight tower bolt fixed to top rail with 25mm screws.
- ⑧ 450mm galvanised tee hinge fixed to top and bottom rails and posts with 25mm screws.



TITLE

External Plot Finishes

DRAWING

1850mm High Open Boarded Timber Side Gate Details

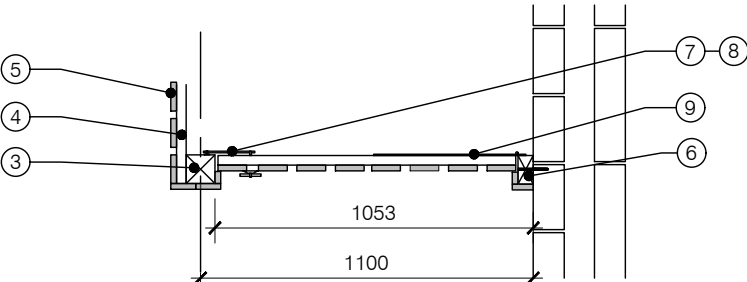
DRAWN BY DB DATE 15/11/2019

CHECKED BY AH SCALE 1:25

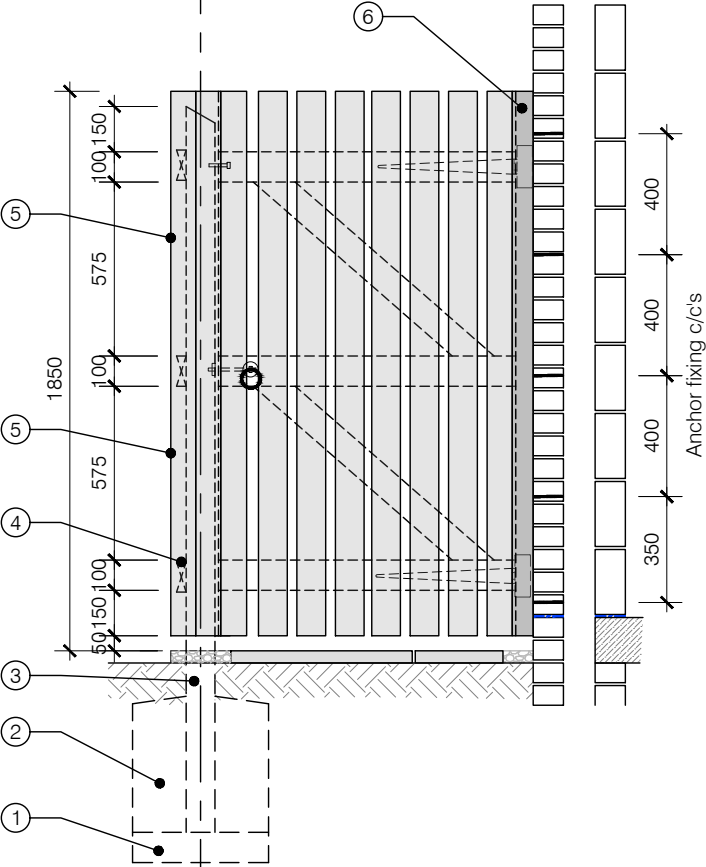
ISSUE (02) DRAWING NUMBER SD100-A-002.1 REVISION A

Revisions Notes Date

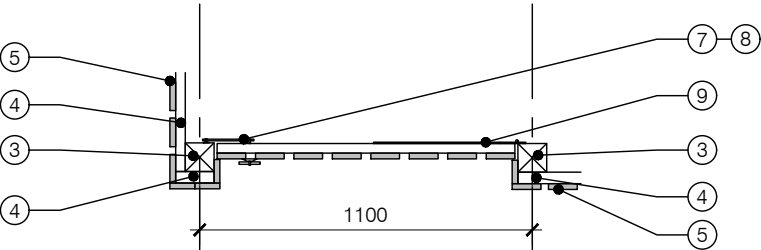
A Drawing renumbered to A-002.1. Gate widths updated 22-02-2021



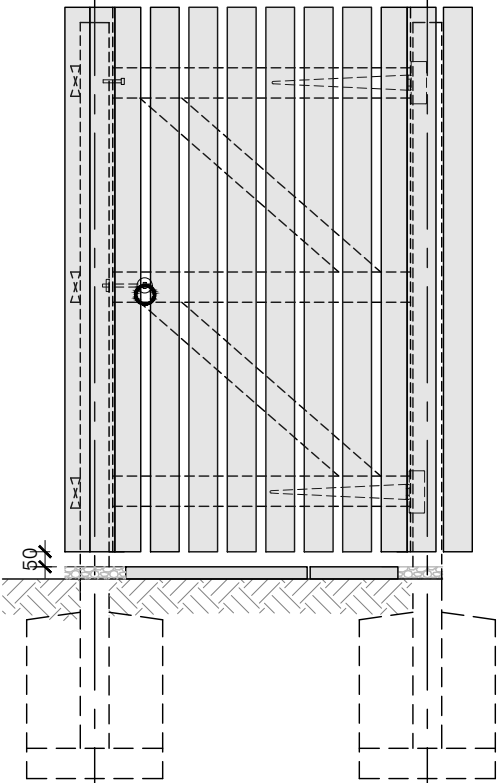
Gate Between Post & Wall Plan



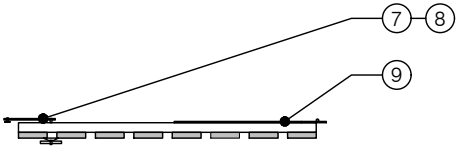
Gate Between Post & Wall Elevation



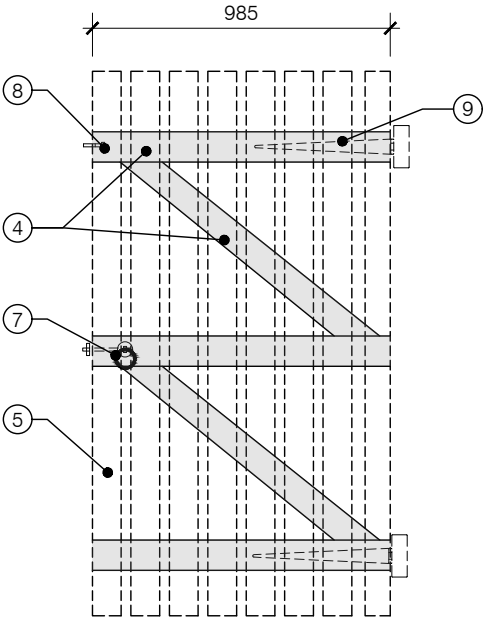
Gate Between Post & Post Plan



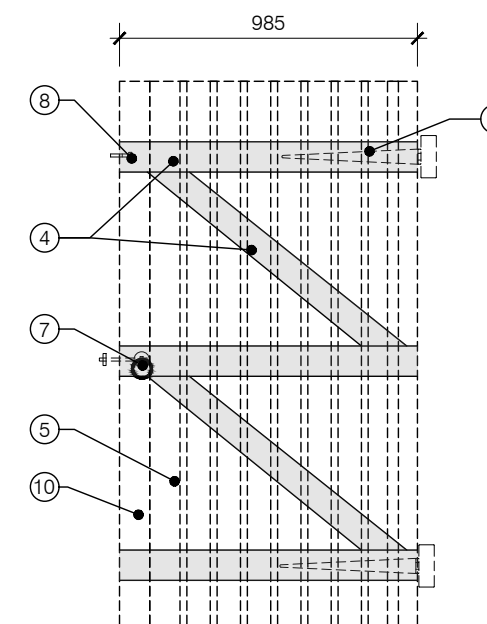
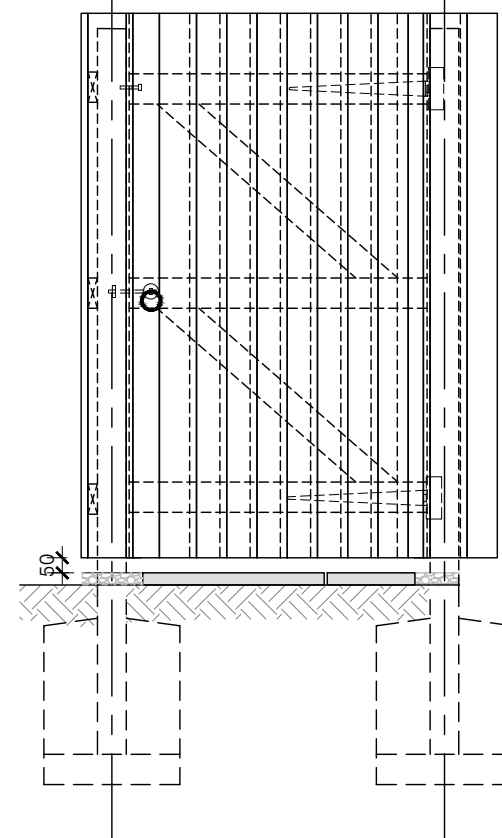
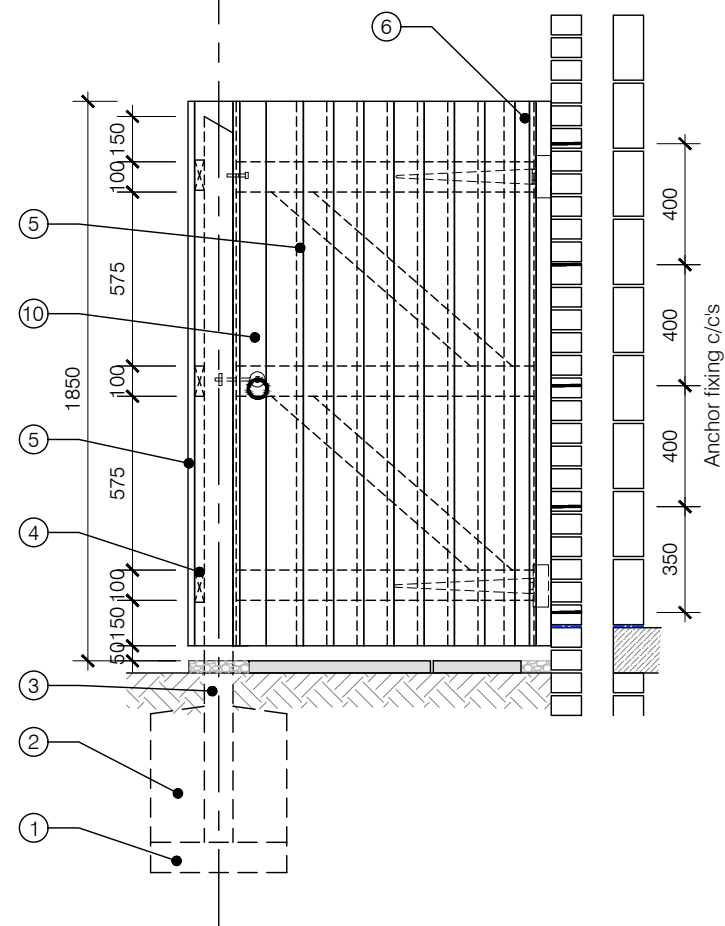
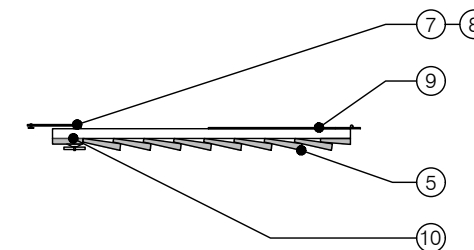
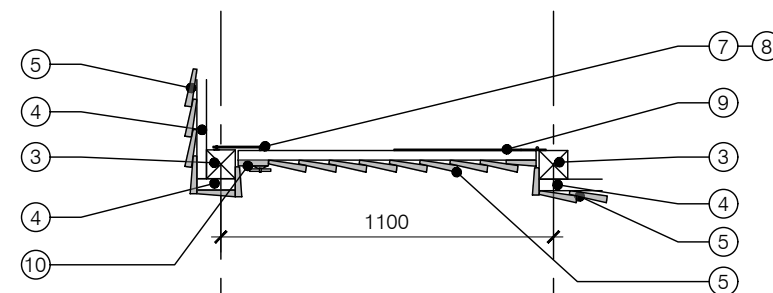
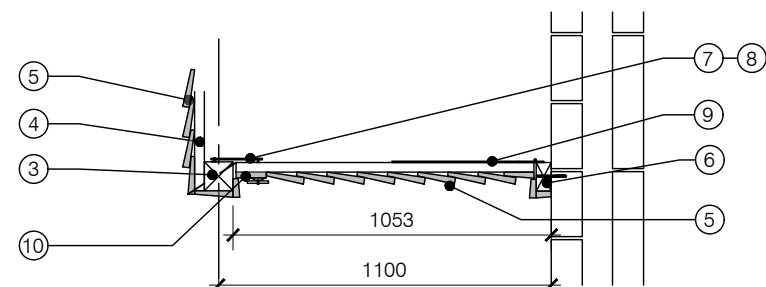
Gate Between Post & Post Elevation



Gate Plan



Gate Elevation



NOTES

General

All timbers shall be pressure impregnated with preservatives as specified. Finish to be mid brown. All cut ends to be preservative treated prior to fixing.

Timber quality shall be as noted in BS 1722. pt 5 Appendix N.

- ① 100mm compacted gravel bed
- ② 450 x 450mm ST2 grade site mixed concrete foundation to post in accordance with NHBC Standards Chapter 3.1, or ready mix grade GEN 1 concrete
- ③ 2400mm long 95 x 95mm s/w post @ 1800mm max centres with weathered top
- ④ 100 x 38mm s/w rails, butt jointed and fixed at posts with 2 minimum 4.50 gauge 100mm galvanised round wire nails.
- ⑤ 1800 x 125 x 16mm to 7mm feather edged boarding, minimum lap 25mm, fixed with 2no minimum 2.65 gauge 45mm galvanised nails per fixing position
- ⑥ 95 x 47 s/w post fixed to wall with 7.5 x 120mm long countersunk concrete screws to centres shown on plan
- ⑦ Galvanised ring handled gate latch 6" fixed through centre rail with 25mm screws.
- ⑧ 150mm galvanised m/steel straight tower bolt fixed to top rail with 25mm screws.
- ⑨ 450mm galvanised tee hinge fixed to top and bottom rails and posts with 25mm screws.
- ⑩ 1800 x 95 x 19mm s/w board to leading edge of gate to allow flush fixing of latch fixed with 2 no minimum 2.65 gauge 45mm galvanised nails per fixing position



TITLE

External Plot Finishes

DRAWING
1850mm High Feather Edge Board
Timber Side Gate Details

DRAWN BY	AA	DATE	22-02-2021
----------	----	------	------------

CHECKED BY	AH	SCALE	1:25
------------	----	-------	------

ISSUE	DRAWING NUMBER	REVISION
(02)	SD100-A-002.2	-

Revisions	Notes	Date
-----------	-------	------

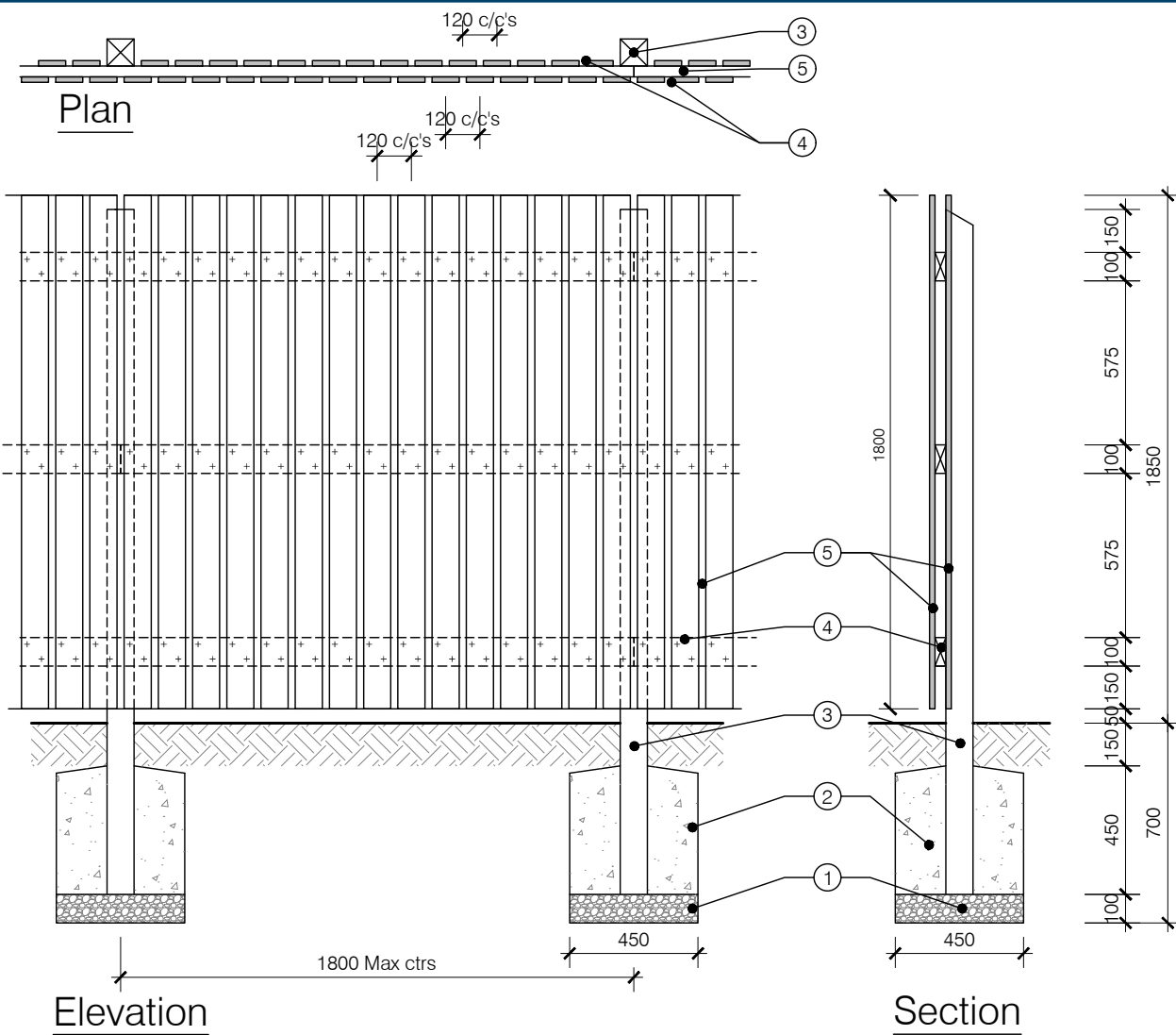
Revisions	Notes	Date

© Story Homes.

Story House, Lords Way, Kingmoor Business Park,
Carlisle, Cumbria, CA6 4SL

Tel 01228 404550

Fax 01228 404551



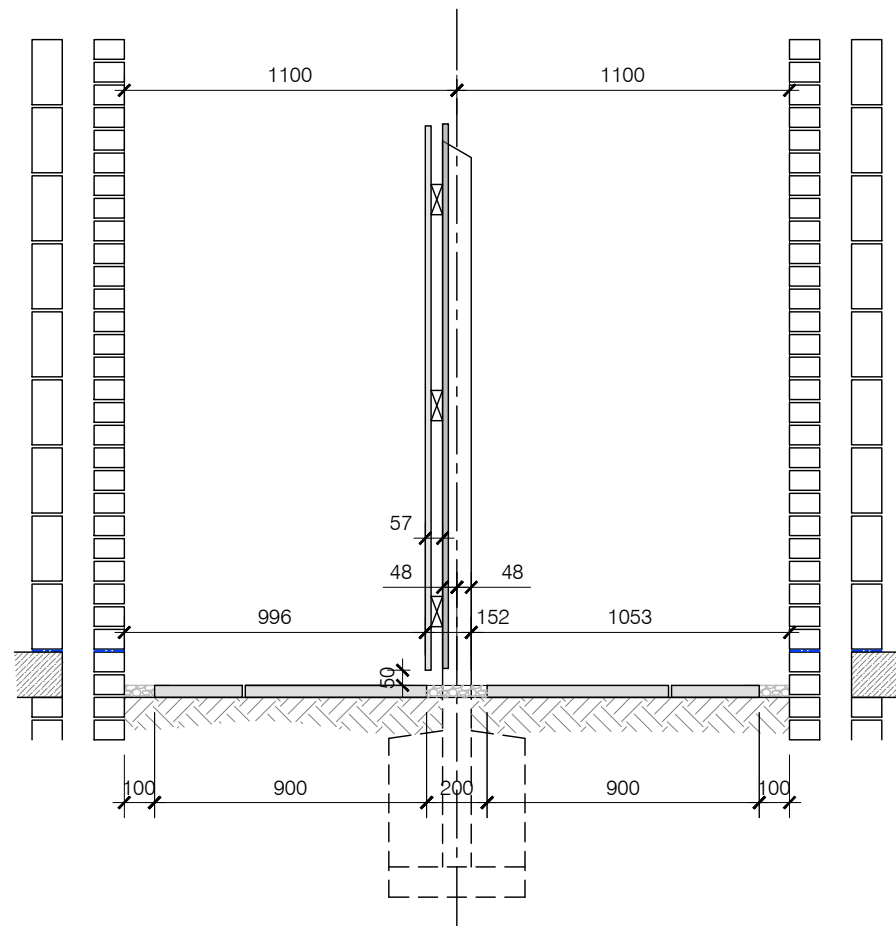
NOTES

General

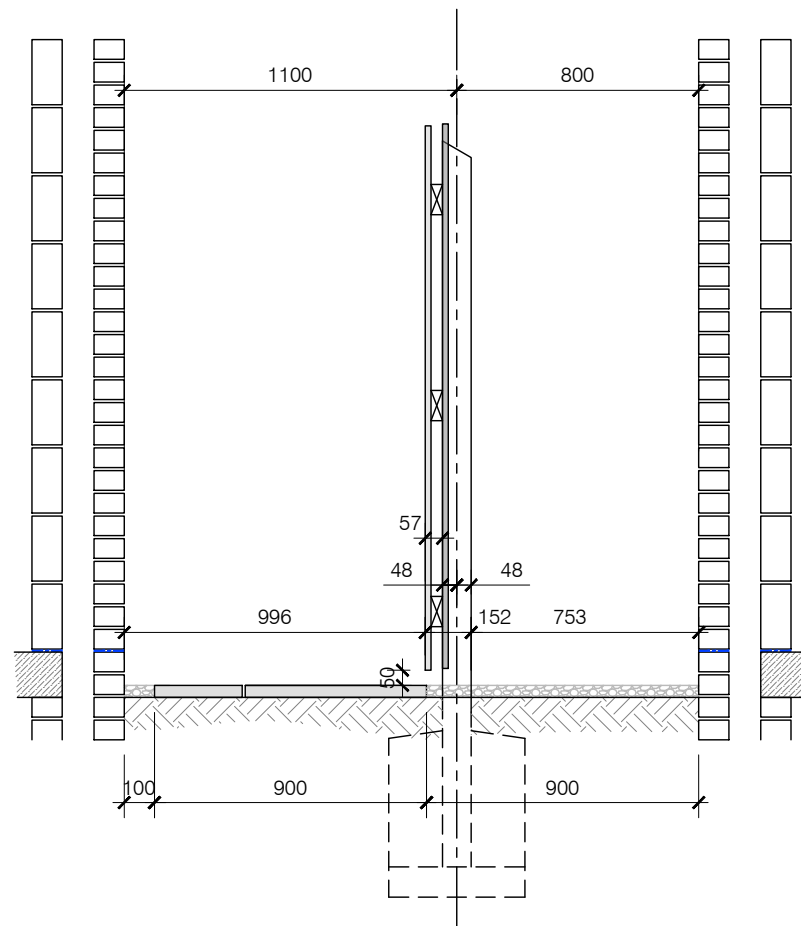
All timbers shall be pressure impregnated with preservatives as specified. Finish to be mid brown. All cut ends to be preservative treated prior to fixing.

Timber quality shall be as noted in BS 1722. pt 5 Appendix N.

- ① 100mm compacted gravel bed
- ② 450 x 450mm ST2 grade site mixed concrete foundation to post in accordance with NHBC Standards Chapter 3.1, or ready mix grade GEN 1 concrete
- ③ 2400mm long 95 x 95mm s/w post @ 1800mm max centres with weathered top
- ④ 100 x 38mm s/w rails, butt jointed and fixed at posts with 2 minimum 4.50 gauge 100mm galvanised round wire nails.
- ⑤ 1800 x 95 x 19mm s/w boarding fixed at 120mm centres, with 2 minimum 2.65 gauge 45mm galvanised nails per fixing position



Fence Setting out - 2200 between Properties



Fence Setting out - 1900 between Properties



TITLE

External Plot Finishes

DRAWING

1850mm High Hit & Miss Fence

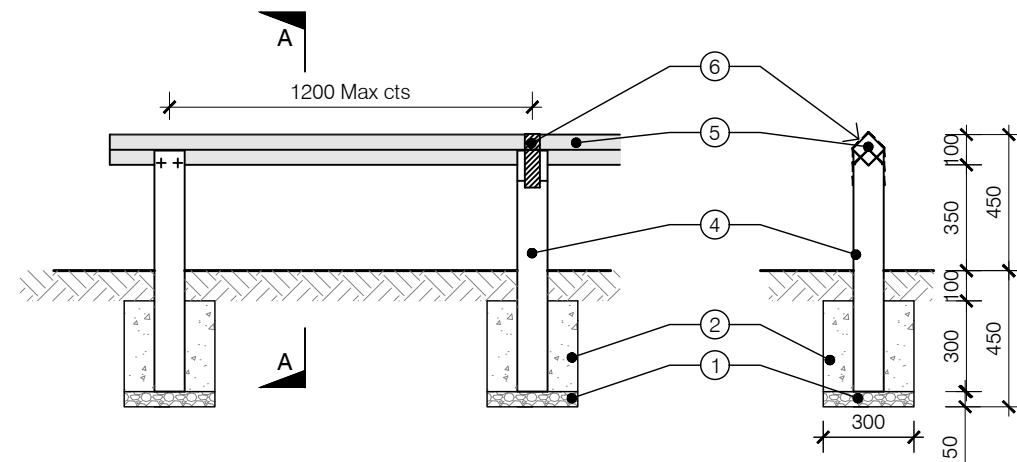
DRAWN BY DB DATE 15/11/2019

CHECKED BY AH SCALE 1:25

ISSUE (02) DRAWING NUMBER SD100-A-003 REVISION A

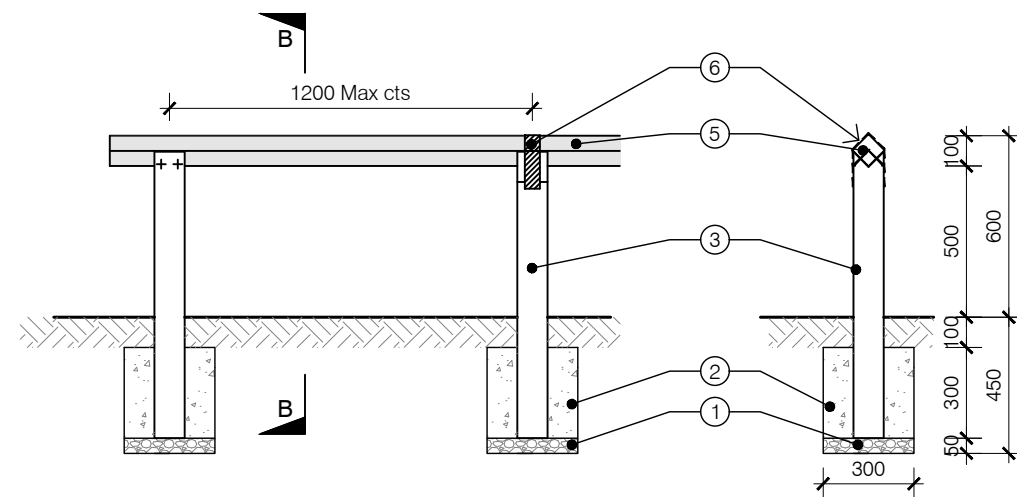
Revisions Notes Date

A	Fence setting out between properties updated	22-02-2021
---	--	------------



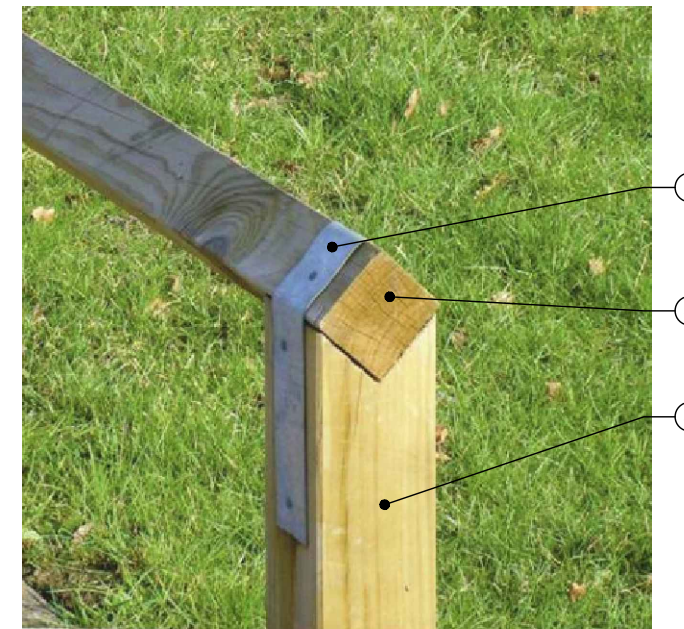
450mm High Trip Rail -
Elevation

Section A-A



600mm High Trip Rail -
Elevation

Section A-A



NOTES

General
All timbers shall be pressure impregnated with preservatives as specified. Finish to be mid brown. All cut ends to be preservative treated prior to fixing.
Timber quality shall be as noted in BS 1722. pt 5 Appendix N.

- ① 50mm compacted gravel bed
- ② 300 x 300mm ST2 grade site mixed concrete foundation to post in accordance with NHBC Standards Chapter 3.1, or ready mix grade GEN 1 concrete
- ③ 950mm long 100 x 100mm s/w post at 1200mm max centres with birds mouthed top.
- ④ 800mm long 100 x 100mm s/w post at 1200mm max centres with birds mouthed top.
- ⑤ 75 x 75mm rails, butt jointed and fixed at posts with 2 minimum 5 x 75mm galvanised screws per fixing position.
- ⑥ 400lg x 50wide x 22g Galvanised strap fixed over rail at every other post. 2 No 2.65 gauge 70mm galvanised nails to each side of post, with 1No to each face fixing of the rail.



TITLE

External Plot Finishes

DRAWING

600mm & 450mm High Trip Rail

DRAWN BY DB DATE 15/11/2019

CHECKED BY AH SCALE 1:25

ISSUE DRAWING NUMBER REVISION

(02) SD100-A-012 -

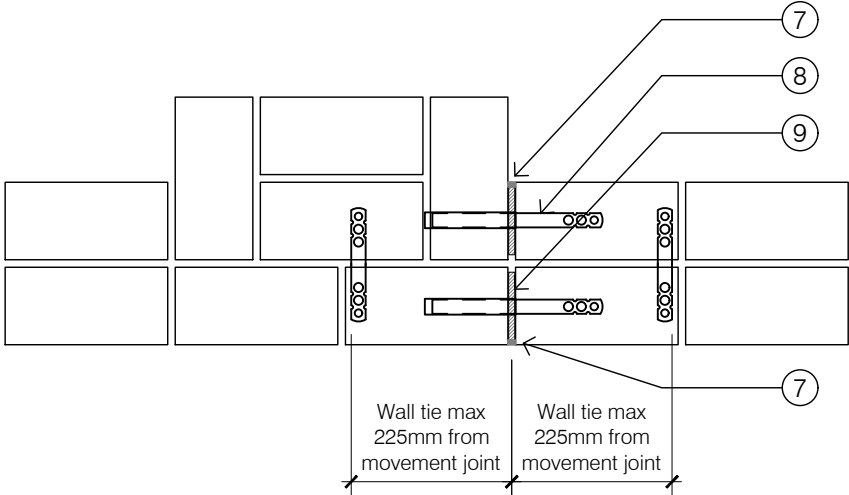
Revisions Notes Date

© **Story Homes.**

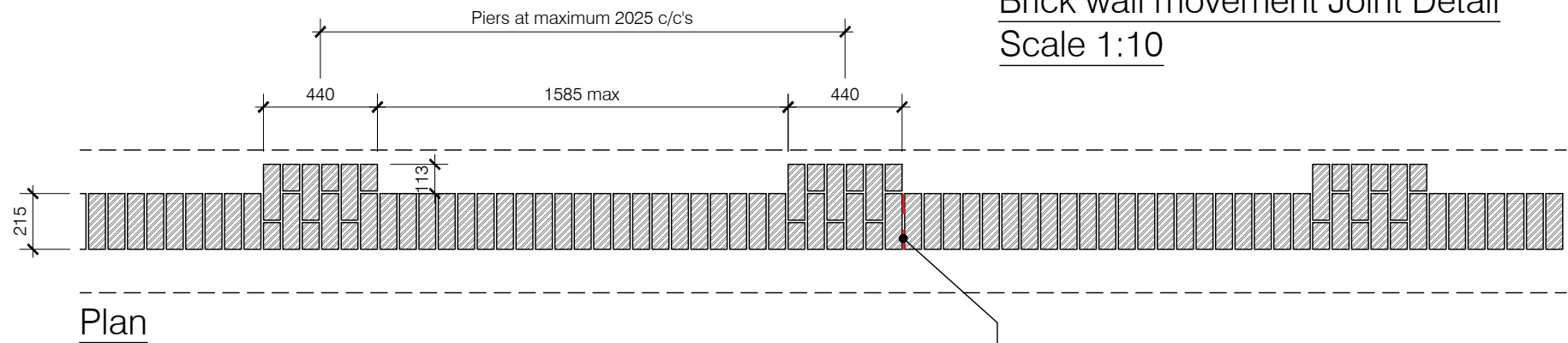
Story House, Lords Way, Kingmoor Business Park,
Carlisle, Cumbria. CA6 4SL

Tel 01228 404550

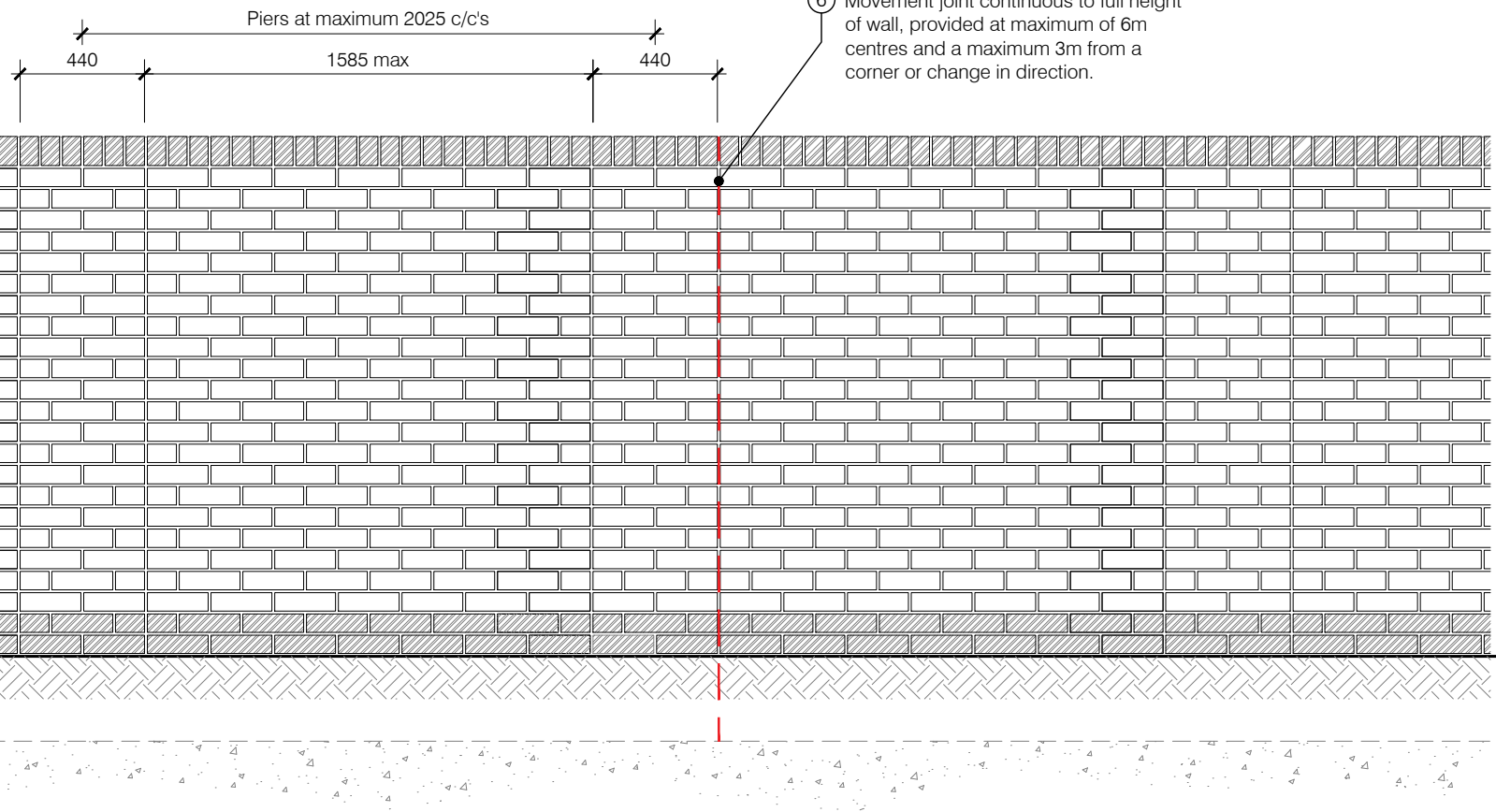
Fax 01228 404551



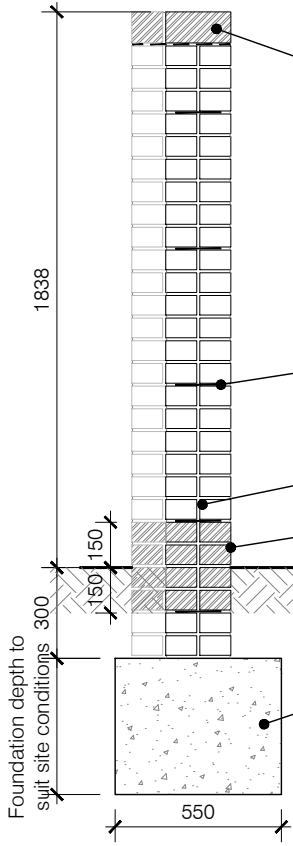
Brick wall movement joint detail
Scale 1:10



Plan



Elevation



Section

- NOTES
- 1 Min 550 wide (widened at piers) with ST2 grade site mixed concrete foundation in accordance with NHBC Standards Chapter 3.1, or ready mix grade GEN 1 concrete. Depth as per site engineers drawings
 - 2 Class B Engineering brick, 2 courses above and 2 courses below ground level, as required per site material schedule.
 - 3 Finishing brick fair faced to both sides of wall laid on Class 2 mortar, colour to suit site material schedule.
 - 4 Ancon 150mm SPS Wall Ties staggered at 450mm vertical and 900mm horizontal centres
 - 5 Class B Engineering 'brick on edge' coping bedded on a high bond Dpc 'sandwiched' in mortar
 - 6 Movement joint continuous to full height of wall, provided at maximum of 6m centres and a maximum 3m from a corner or change in direction.
 - 7 Sealant to vertical joint - proprietary 2 part polysulphide system to manufacturers installation detail.
 - 8 Ancon PPB movement wall ties with debonding sleeves at 300mm vertical centres in alternating courses. Debonding sleeves to be installed with a 10mm gap at end to allow for expansion of the masonry
 - 9 Compressible filler in 10mm brick work movement joint, sealed with movement joint bead, at maximum 6m centres, or as designed by engineer.



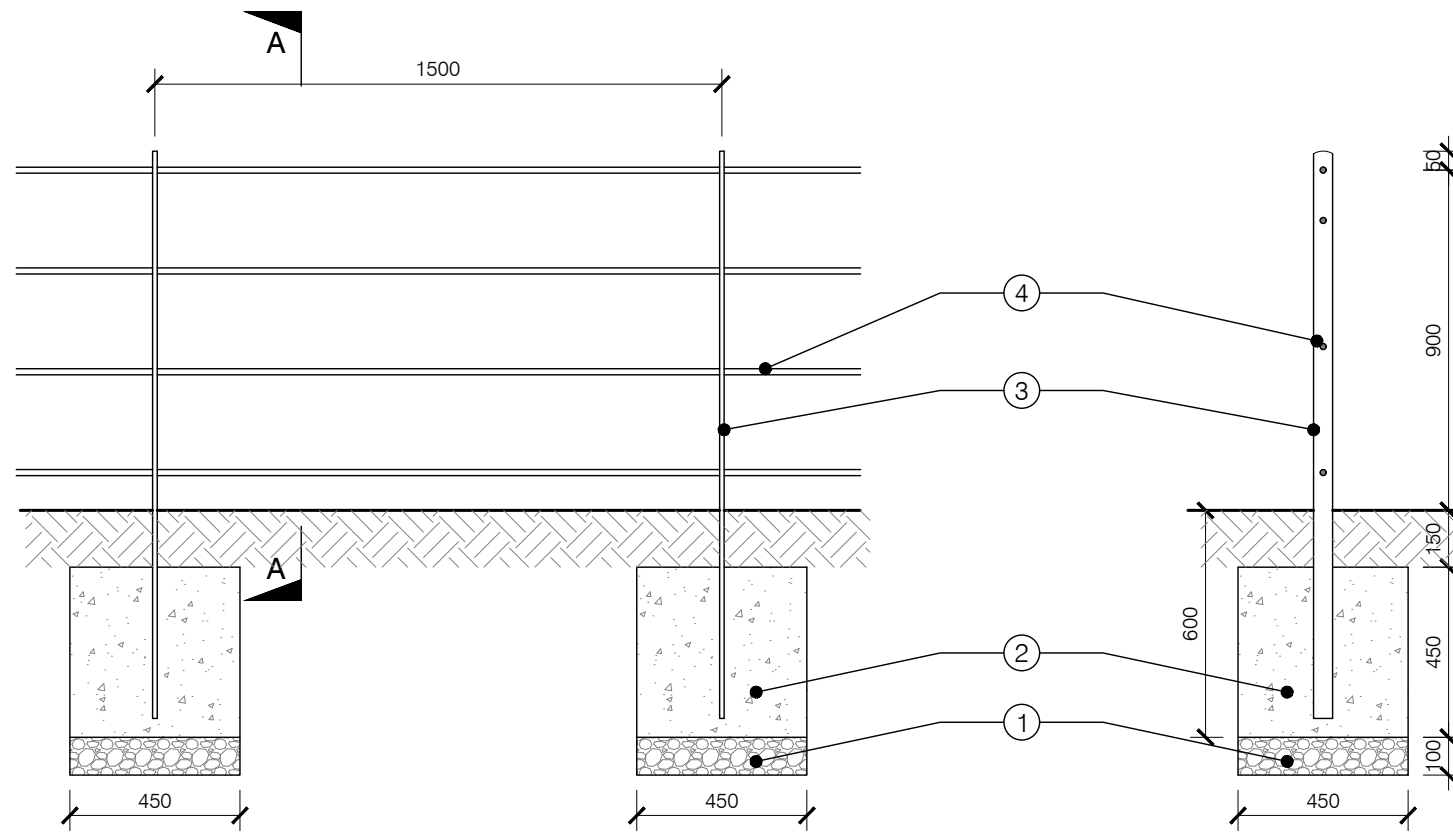
TITLE

External Plot Finishes

DRAWING

1800mm High Brick Boundary Wall

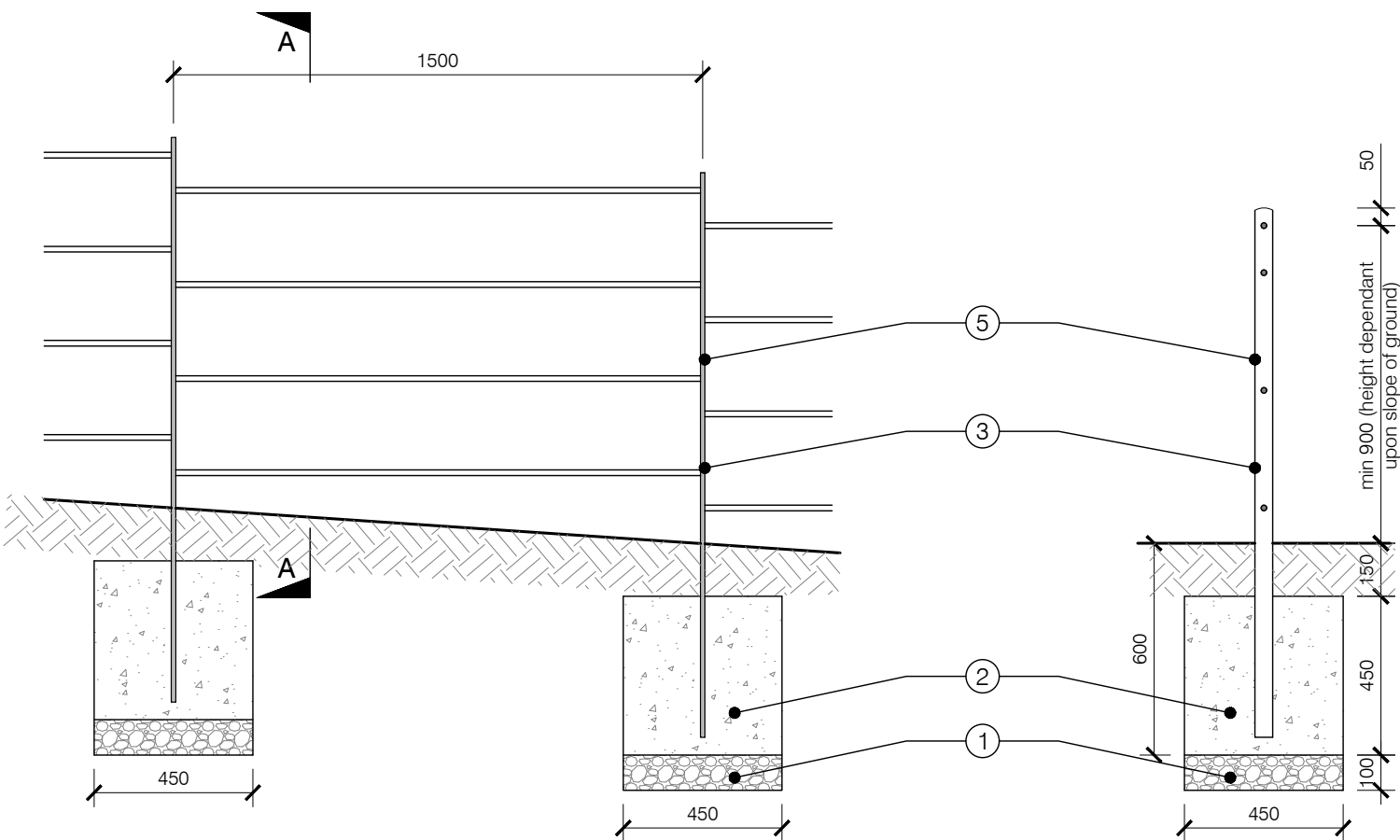
DRAWN BY	DB	DATE	15/11/2019
CHECKED BY	AH	SCALE	1:25
ISSUE	DRAWING NUMBER	REVISION	
(02)	SD100-B-001	A	
Revisions	Notes	Date	
A	Additional note added re movement joints	22-02-2021	



Elevation

Section A-A

ALL POSTS AND RAILINGS
TO BE FINISHED IN BLACK
POWDER COATING



Elevation

Section A-A

NOTES

- ① 100mm compacted gravel bed
- ② 450 x 450mm ST2 grade site mixed concrete foundation to post in accordance with NHBC Standards Chapter 3.1, or ready mix grade GEN 1 concrete
- ③ Posts - 1500 x 50 x 12mm mild steel galvanised flat bar, spaced at maximum 1500cts. Tops of posts to have corners rounded.
- ④ Railings - 16mmØ mild steel galvanised bars
- ⑤ 2No Posts - Height (to suit 900mm rail height) x 50 x 12mm mild steel galvanised flat bar, spaced at maximum 1500cts bolted together with 2No M8 x 65 coach bolts. Tops of posts to have corners rounded.



TITLE

External Plot Finishes

DRAWING

900mm High Estate Railing

DRAWN BY DB DATE 15/11/2019

CHECKED BY AH SCALE 1:20

ISSUE (02) DRAWING NUMBER SD100-C-001 REVISION -

Revisions Notes Date